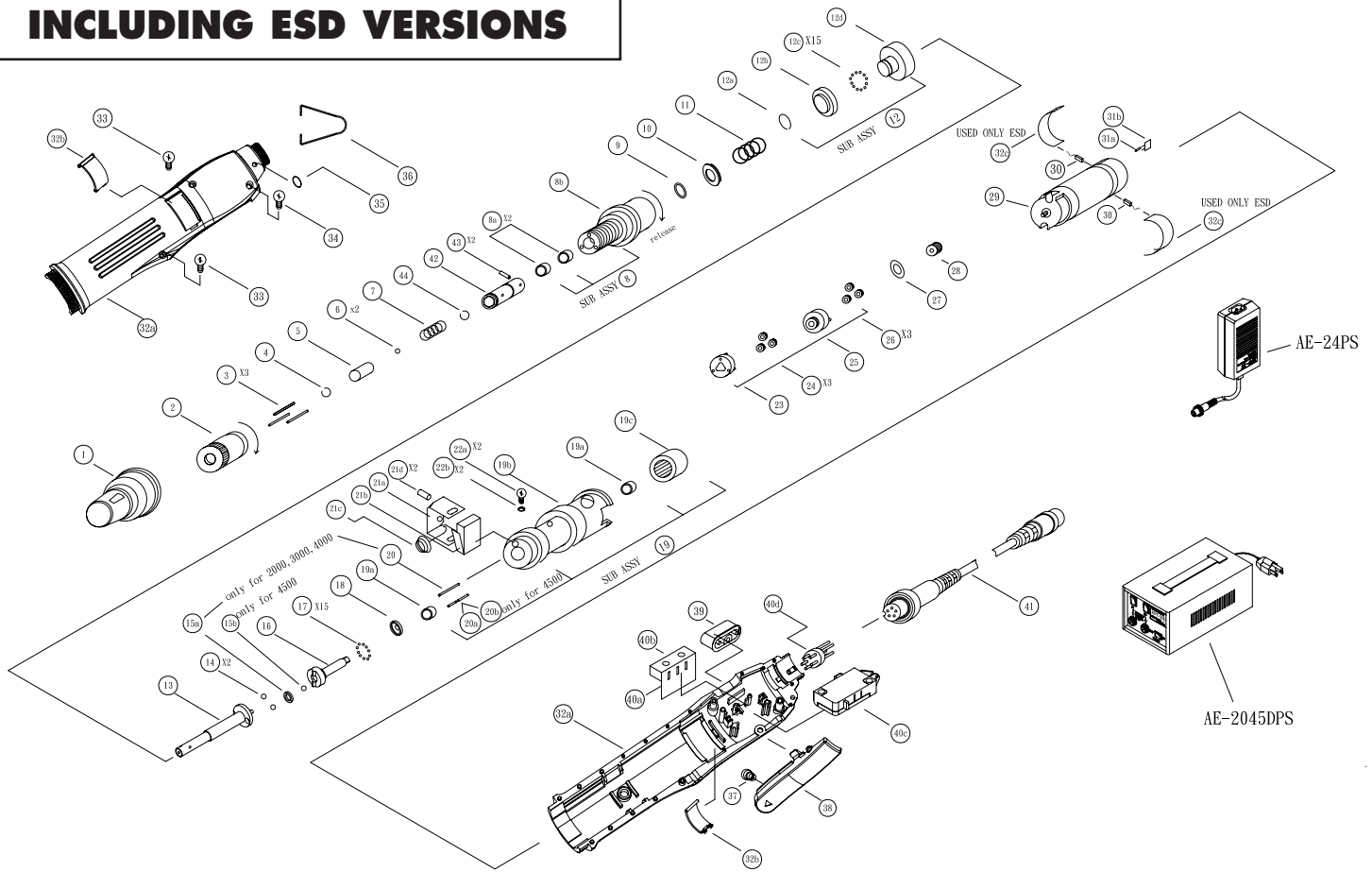


# AE-2020/4020/4520 ELECTRIC SCREWDRIVERS

**INCLUDING ESD VERSIONS**



## PARTS LIST — FOR REFERENCE ONLY

Index Number	Part Number	Description	Qty.	Index Number	Part Number	Description	Qty.	Index Number	Part Number	Description	Qty.	
1	6H1053	Retaining Ring	1		4K2047	Hammer (High 1.95mm C/W Bearing)	1	31b	2C6616	Capacitor (104J 100V)	1	
	6H1055	Retaining Ring (ESD)	1	●	4K2048	Hammer (High 1.95mm)	1	32	6A1036	Plastic Housing (L+R w/Carbon Maintenance Bonnet Set)	1	
2	4J1071	Regulating Handle	1	●	4B1024	Ball (ø 2.0)	15	32a	6Z1226	Plastic Housing	1	
	4J1081	Regulating Handle	1	▲	17	4E7011	Retainer (ø15*ø7* t2.80)	1	32b	6C5026	Carbon Maintenance Bonnet Set	1
3	4N1026	Push Pin (L=18.8mm)	3		18	4A7029	Gear Housing Sub Ass'y	1	32	6A1035	Plastic Housing (L+R ESD Black w/Carbon Maintenance Bonnet Set)	1
4	4U1052	Snap Ring (ø1*ø6)	1		19a	4E1021	Ball Bearing (ø9*ø6.35*3.17T)	2	32a	6Z1225	Black Plastic Housing (ESD)	1
5	4H2081	Bit Slide Sleeve (ø10*ø7* 11mm)	1		19b	4R1074	Gear Housing	1	32b	6C5025	Carbon Maintenance Bonnet Set (ESD)	1
6	4B1026	Ball (ø2.5)	2		19c	4X1055	Internal Gear (T=30T)	1	32c	6W1212	Insulated Plate (ESD)	2
7	4S3074	Sleeve Spring (1/4")	1		20	4N1143	Roller Pin (ø2.0*12.8mm)	1	33	8T1663	Screw (M2.6*6mm)	2
8	4A1025	Hammer Casing Sub Ass'y	1		20a	4N1145	Roller Pin (ø2.0*5.8mm)	1	34	8T2624	Screw (M2.6*5mm)	1
8a	4E1022	Ball Bearing (ø7*ø11* 3T)	2		20b	4N1146	Roller Pin (ø2.0*6.8mm)	1	35	4F1023	Hanger Ring (ø1.0*ø12.0*2T)	1
8b	4T1035	Hammer Casing (ø7.00)	1		21	2A7012	Micro Switch Sub Ass'y	1	36	4F1012	Hanger Ring	1
9	4W6015	Washer (ø10.9*ø7* 0.2T)	1		21a	4V1032	Fixing Plate	1	37	4S3052	Fwd. Spring	1
10	4W6411	Washer (ø15*ø11* 2.4T)	1		21b	2S3018	Micro SW. Only (5GL)	1	38	6P4013	Fwd. Trigger (Black)	1
11	4S1114	Spring (ø1.6)	1	▲	21c	2S3011	Micro SW. Only (10GL)	1	39	6P4015	Fwd. Trigger (ESD Black)	1
	4S1073	Spring (ø1.4)	1	●	21d	4N4015	Spring Cotter (ø2.0*8mm)	1		6P4023	Rev. Trigger (Black)	1
	4S1026	Spring (ø1.1)	1	■	22a	8T4046	Screw (M2.6*6mm)	2		6P4025	Rev. Trigger (ESD Black)	1
12	4A5025	Retainer Sub Ass'y	1		22b	4W1712	Washer (Start Washer)	2	40	2A6039A	PWB Sub Ass'y	(1)
12a	4U1037	Snap Ring (ø0.8mm)	1		23	4L2851	Second Gear Cage	1	40a	2H1083	Circuit Board	1
12b	4E6011	Washer	1		24	4G2654	Second Planet Gear (10T)	3	40b	2S3012	Micro Switch (SS-10)	1
12c	4B1024	Ball (ø2.0)	15		25	4L1654	First Gear Cage (C/W Center Gear)	1	40c	2S1021	Micro Switch (V-12-1E5)	1
12d	4K6011	Driven Clutch	1	●	26	4G2654	First Planet Gear (10T)	3	40d	2G1023	5P Socket	1
	4K6012	Driven Clutch	1	▲	27	4W6012	Washer (ø4.5*ø9* t0.2)	1	41	2W2022	5P-5P Connector Wire (2.4m)	1
13	4C1024	Anvil (O.D. 7.00)	1	●	28	4G1652	Driving Gear (9T)	1	42	4C1191	Bit Holder (1/4")	1
	4C1025	Anvil (O.D. 7.00)	1	▲	29	2M2061	Motor (7Q2765-21020)	1	43	4N4012	Spring Cotter (ø2.0 x 9.8mm)	2
14	4B1029	Ball (ø4.0)	2		30	2B1018	Brush (Pair)	2	44	4U1054	Snap Ring (1/4")	1
15	4E1023	Ball Bearing (ø3*ø8* t4mm)	1	●	31a	2R2014	Resistor (100?)	1				
	4B1027	Ball (ø3.0)	1	▲								
16	4K2046	Hammer (High 1.6mm)	1	■								



10000 SE Pine Street  
Portland, OR 97216  
503-254-6600  
FAX 503-255-2615

When ordering spare parts, please specify tool type, part number and description.

### KEY

- AE-2020
- AE-4020
- ▲ AE-4520
- ★ ESD

REVISED 10/09