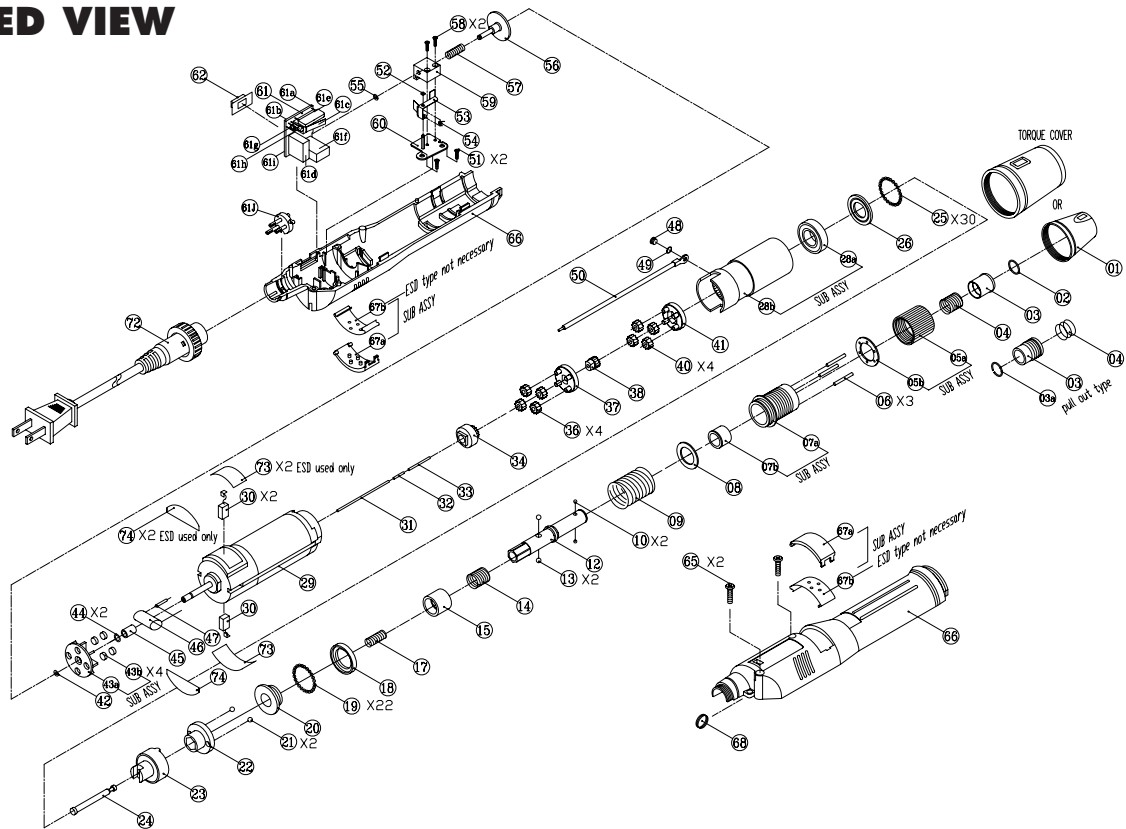


AE-5681 AND AE-5681-ESD ELECTRA SCREWDRIVERS

EXPLODED VIEW



PARTS LIST — FOR REFERENCE ONLY

Index Number	Part Number	Description	Qty.	Index Number	Part Number	Description	Qty.	Index Number	Part Number	Description	Qty.
1	6H1046	Retaining ring	1	27	4W6311	Washer	1	53	4S5016	Spring plate	1
1	6H1047	Torque cover	1	28	4A7019	Gear housing sub assembly	1	54	4S3101	Support ring	1
1	6H1048	Retaining ring (for ESD models)	1	28a	4E1019	Ball bearing, 6901ZZ	1	55	4U1061	Snap ring $\varnothing 0.5 \times \varnothing 2.5$	1
1	6H1049	Torque cover (for ESD models)	1	28b	4X1046	Gear housing	1	56	4K4011	Braking disk	1
2	4U1051	Snap ring	1	29	2M5043	Motor AC110V (FOR AE-5681/ESD)	1	57	4S2027	Spring $\varnothing 0.45$	1
3	4H2048	Bit slide sleeve	1	29	2M5047	Motor 24N2975-09080-40Y, for 230 V	1	58	8T3326	Screw $\varnothing 2.0 \times L=10$	2
3a	4U1051	Snap Ring $\varnothing 1.0$	1	30	2B1014	Brush (pair)	1	59	4V1026	Slide Base	1
4	4S3065	Sleeve spring $\varnothing 0.6$	1	31	4N4026	Guide pin A $\varnothing 1.5 \times L=89$	1	60	4V1123	Fixing plate	1
5	4A4022	Regulating handle sub assembly	1	32	4N4032	Guide pin B $\varnothing 1.5 \times L=10$	1	61	2A6031A	PWB Sub Ass'y Inc.061a~061j	1
5a	4J1066	Regulating handle	1	33	4N1126	Guide pin C $\varnothing 2.0 \times L=18.8$	1	61a	2H1074	Circuit Board	1
5b	4W4712	Washer	1	34	6G9012	Connect Gear 14T (FOR AE-5681/ESD)	1	61b	2S2019	3 Band Switch	1
6	4N1026	Push pin $\varnothing 2.0 \times 18.8$	3	36	4G2685	First Planet Gear 14T (FOR AE-5681/ESD)	4	61c	2S3011	Micro Switch	1
7	4A1019	Hammer case sub assembly	1	37	4L1812	First Gear Cage (FOR AE-5681/ESD)	1	61d	2E1036	Bridge Rectifier	1
7a	4T1076	Hammer casing	1	38	4G1611	Gear, 14T	1	61e	2C6821	Capacitor	1
7b	4Q1064	Spindle bushing	1	39	4W3012	Washer	1	61f	2F3015	Protector	1
8	4W4214	Washer	1	40	4G2611	Second planet gear, 14T	4	61g	2D4017	Silicon Rectifier	1
9	4S1035	Spring $\varnothing 2.2$	1	41	4L2821	Second gear cage	1	61h	2N1012	Led	1
10	4B2015	Ball $\varnothing 2.38 (1/4)$ "	1	42	4U1068	Snap ring	1	61i	2R8416	Resistor 10K Ω /2W	1
12	4C1158	Anvil 1/4"	1	43	6A3011	Fan sub assembly	1	61j	2G1016	3P Plug	1
13	4B1029	Ball $\varnothing 4.0$	2	43a	2R2014	Fan	1	66	6Z1161	Housing	1
14	4S3066	Spring $\varnothing 0.7$	1	43b	2V1016	Magnet	4	67	6A2014	Carbon maintenance bonnet sub assembly	2
15	4K3058	Slide Sleeve L=9.4	1	44	6W1013	Plastic washer $\dagger 0.5$	2	67a	6C4011	Carbon maintenance bonnet	2
16	4W3311	Washer	1	44	6W1014	Plastic washer $\dagger 0.25$	1	67b	4S5012	Spring connector (not needed on ESD)	2
17	4S2025	Spring $\varnothing 0.5$	1	45	4Q1073	Anvil bushing	1	67b	6C4010	Carbon maintenance bonnet (ESD)	2
18	4E2013	Retainer	1	46	2C6821	Capacitor 1K 400V	1	68	4F1023	Hanger ring	1
19	4B1024	Ball $\varnothing 2.0$	22	47	2R2014	Resistor 100 Ω	1	69	7L1351-0	Model label	1
20	4K3046	Driven clutch	1	48	8F1623	Screw $\varnothing 2.0 \times 5$	1	70	7L3018	Caution label	1
21	4B1028	Ball $\varnothing 3.175$	2	49	4W1611	Washer	1	71	7L3021	Caution label (ESD)	1
22	4K2032	Hammer	1	50	2L9231	Ground Wire	1	72	2W1020	AC cord	1
23	4K1067	Hammer shank	1	51	8T2685	Screw $\varnothing 3.0 \times 8 \text{PTS}$	2	73	6W1212	Insulated sheet 50x 13x $\dagger 0.25$ (ESD)	2
24	4C2042	Slide pin	1	52	6W1012	Plastic washer	1	74	6W1213	Insulated sheet 20x 6x $\dagger 0.25$ (ESD)	2
25	4B1024	Ball $\varnothing 2.0$	29	52A	4A6012	Braking Disk Sub Ass'y inc. 51~60	(1)				
26	4W3215	Washer	1								



10000 SE PINE,
PORTLAND, OR 97216
503-254-6600
FAX 503-255-2615

When ordering spare parts, please specify
tool type, part number and description.

AIMCO also offers a complete line of standard & special adapters, bits,
sockets and extensions.