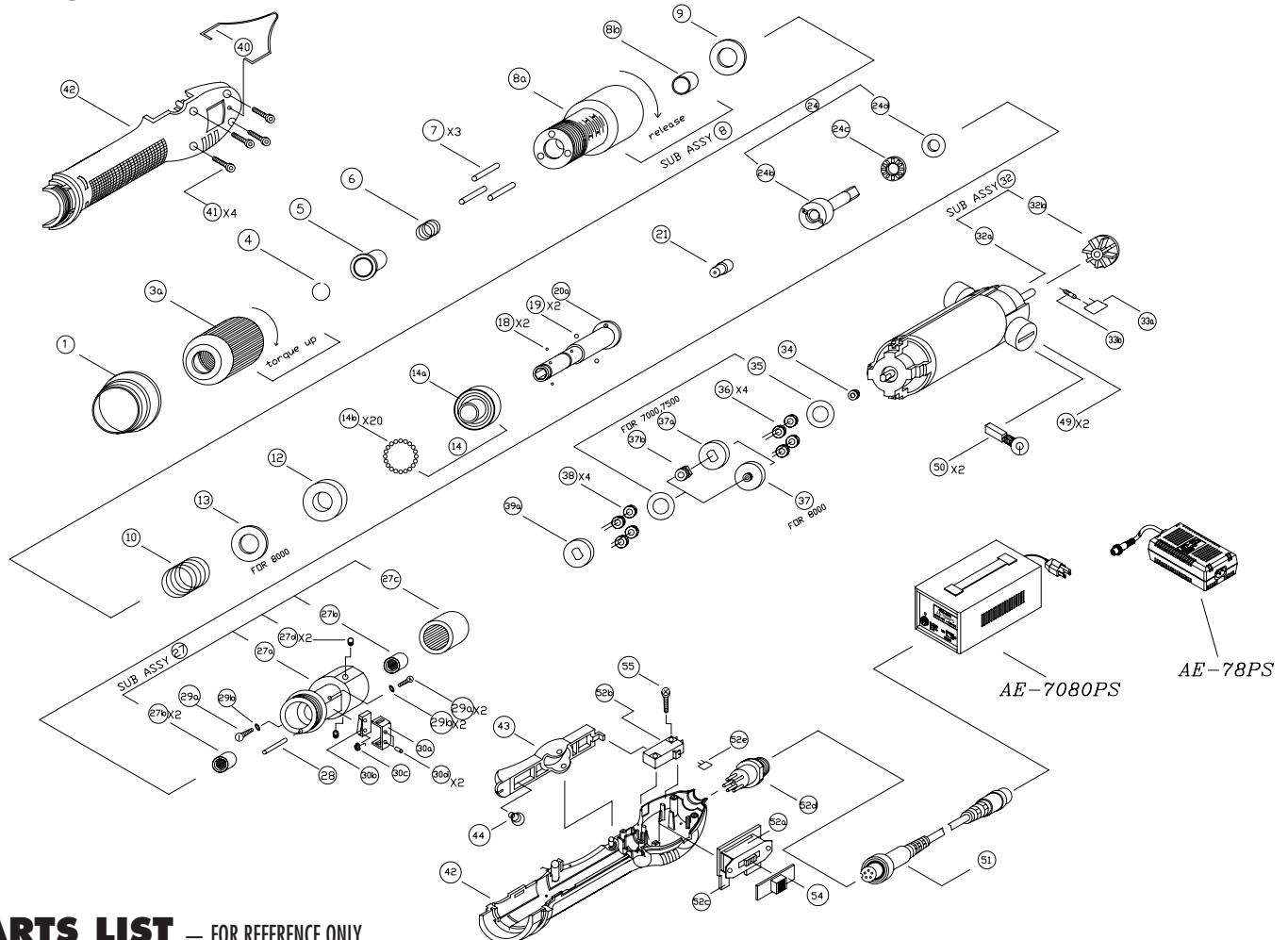


AE-7010/AE-8010 SCREWDRIVER

EXPLODED VIEW



PARTS LIST — FOR REFERENCE ONLY

Index Number	Part Number	Description	Qty.	Index Number	Part Number	Description	Qty.	Index Number	Part Number	Description	Qty.
1	6R5011	Retaining Ring (For #AE-7010)	1	27d	8K2014	Screw	2	42	6Z3013	Plastic Housing Set	1
	4H1101	Retaining Ring (Aluminum For #AE-8010)	1	28	4N1120	Brake Pin	1		6Z3010	Plastic Housing Set (For ESD)	1
3a	4J1084	Regulating Handle	1	29	8T1064	Screw	2	43	6P1021	Trigger	1
4	4U1052	Snap Ring	1		4W1712	Washer	2	44	6P1022	Trigger (For ESD)	1
5	4H2082	Bit Slide Sleeve	1	30	2A7015	Micro Switch Sub Ass'y	1	49	4S3051	Trigger Spring	1
6	4S3064	Sleeve Spring	1	30a	4V1032	Fixing Plate	1	50	6V1021	Brush Cover	2
7	4N1025	Torque Adjustment Pin	3	30b	2S3011	Micro Switch Only	1	51	2B1013	Brush	2
8	4A1016	Hammer Casing Sub Ass'y	1	31a	4S3043	Spring	1		2W2123	5P-5P DC Connector Wire (AE-7080PS)	1
8a	4T1092	Hammer Casing	1	31b	4N4015	Pin	1		2W2124	5P-5P DC Connector Wire (AE-7080PS)	1
8b	4Q1045	Anvil Bushing	1	32	2A1011	Motor Sub Ass'y (For #AE-7010)	1		2W2173	5P-5P DC Connector Wire (AE-78PS)	1
9	4W4716	Push Washer	1	32a	2M1061	Motor (For #AE-7010)	1	52	2A6024	FWD/REV Ass'y (For PWB 5P Plug)	1
10	4S1033	Spring (For #AE-7010)	1	32b	6R2012	Fan (For #AE-7010)	1	52a	2S2019	FWD/REV Switch	1
	4S1034	Spring (For #AE-8010)	1	32	2A1012	Motor Sub Ass'y (For #AE-8010)	1	52b	2S1021	Operation Switch	1
12	4E2027	Retainer	1	32a	2M1062	Motor (For #AE-8010)	1	52c	2H1075	Circuit Board	1
13	4W3217	Washer	1	32b	6R2012	Fan (For #AE-8010)	1	52d	2G1022	5P Plug	1
14a	4K3044	Clutch Control Disc	1	33a	2C6617	Capacitor	1	52e	2C6611	Capacitor	1
14b	4B1027	Ball	20	33b	2R2014	Resistance	1	54	6V1042	Push Button (Black)	1
18	4B2016	Ball	2	34	4G1045	Driving Gear	1		6V1041	Push Button (ESD/Black)	1
19	4B2018	Ball	2	35	4W3012	Washer	1	55	8T2690	Pan Head Tapping Screw	1
20a	4C1074	Anvil	1	36	4G2687	First Pinion Gear	4	Nil	2W1024	Power Cord	1
21	4C2014	Anvil Rear Shaft	1	37	4L1883	First Gear Cage (For #AE-8010)	1	Nil	4H2052	Torque Cover	1
24	4A3117	Hammer Sub Ass'y	1	37a	4L2814	First Gear Cage (For #AE-7010)	1	Nil	2G2021	5P Plug (For 5P-5P Connector Wire Maintenance)	1
24b	4K1054	Hammer	1	37b	4G1613	Second Driving Gear (For #AE-7010)	1	Nil	2W2175	5P Connect Wire (AE-78PS)	1
24c	4E4021	Thrust Bearing	1	38	4G2652	Second Pinion Gear (For #AE-7010)	4	Nil	2W2176	5P Connect Wire (AE-78PS CE)	1
24d	4W3213	Washer	1		4G2687	Second Pinion Gear (For #AE-8010)	4	Nil	2W2123	5P Connect Wire (AE-7080PS)	1
27	4A7021	Gear Housing Sub Ass'y	1	39a	4L1813	Second Gear Cage (For #AE-7010)	1				
27a	4R1041	Gear Housing or Gear Casing	1		4L2814	Second Gear Cage (For #AE-8010)	1				
27b	4E4032	Roller Bearing	2	40	4F1041	Hanger Ring (Black 1/4" for Bit Holder)	1				
27c	4X1057	Internal Gear	1	41	8T2687	Screw	4				

FOOTNOTES



10000 SE PINE,
PORTLAND, OR 97216
503-254-6600
FAX 503-255-2615

When ordering spare parts, please specify
tool type, part number and description.