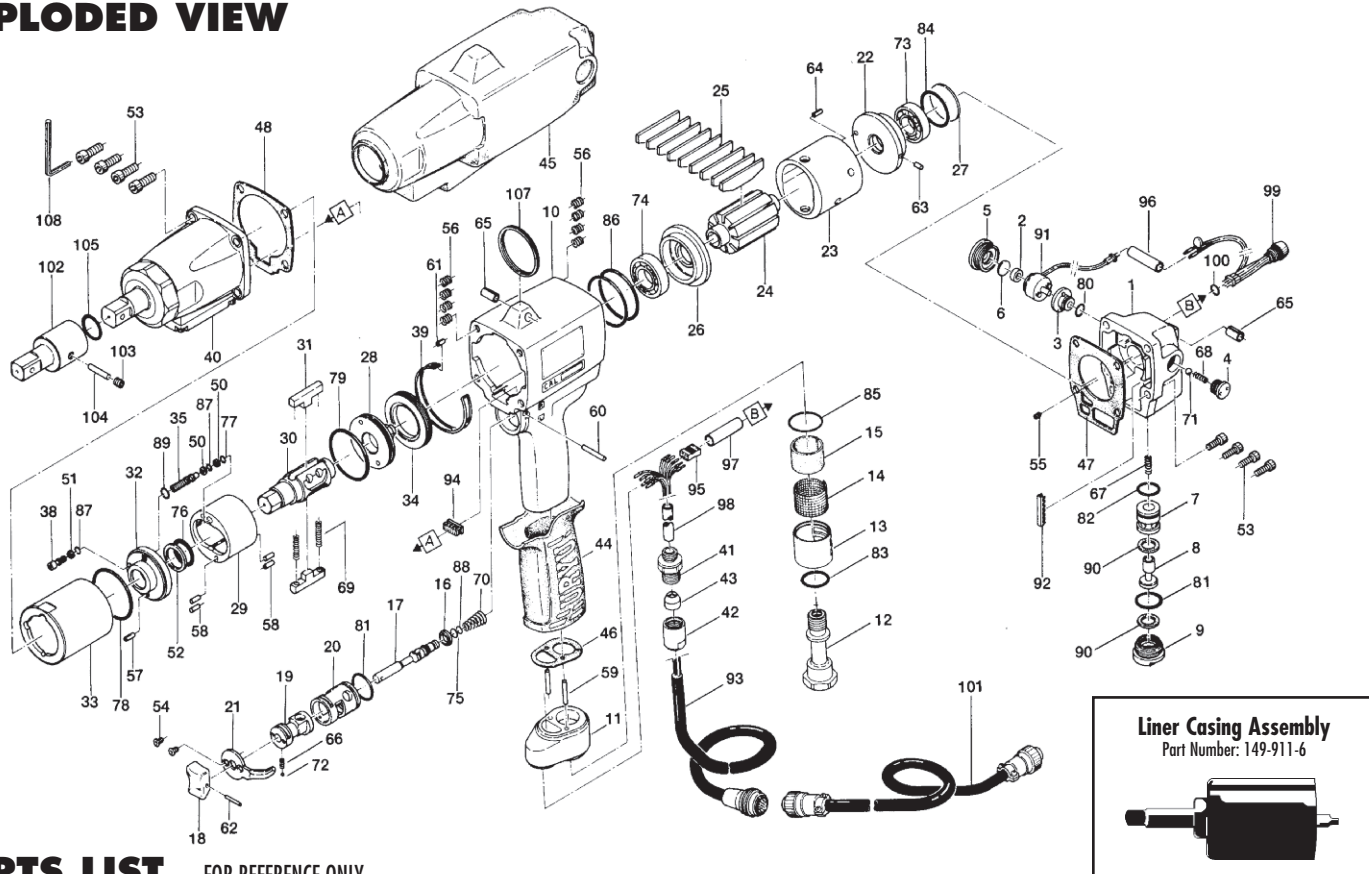


EXPLODED VIEW



PARTS LIST — FOR REFERENCE ONLY

Index Number	Part Number	Description	Qty.
1	149-012-6	Head Cover	1
2	193-120-6	Valve Packing Spacer	1
3	193-147-6	Stop Valve Bushing	1
4	193-148-6	Stop Valve Cover	1
5	193-149-6	Stop Valve Plug	1
6	193-872-6	Valve Packing	1
7	149-253-6	Shut-Off Valve Bushing	1
8	149-254-5	Shut-Off Valve	1
9	149-927-5	Shut-Off Valve Cover	1
10	149-025-6	Casing	1
11	149-035-5	Casing Connector	1
12	148-091-9	Air Inlet Bushing	1
13	173-780-5	Exhaust Stack	1
14	173-042-0	Silencer	1
15	173-835-0	Filter	1
16	173-100-0	Valve	1
17	173-104-0	Valve Rod	1
18	149-107-2	Valve Lever	1
19	151-210-4	Reverse Valve	1
20	151-211-4	Reverse Valve Bushing	1
21	173-212-0	Reverse Lever	1
22	149-285-6	Rear Plate	1
23	173-286-0	Cylinder	1
24	173-287-0	Rotor	1
25	151-288-9	Blade (PC)	9
26	173-289-0	Front Plate	1
27	193-291-7	Rear Plate Spacer	1
28	194-901-3	Rear Liner Plate	1
29	194-902-3	Liner	1
30	149-319-6	Anvil	1
31	194-440-3	Driving Blade	2
32	194-904-3	Front Liner Plate	1
33	194-905-3	Liner Casing	1
34	194-906-3	Liner Casing Setter	1
35	850-429-1	Relief Valve Spindle	1
38	194-742-3	Oil Plug	1
39	149-754-6	Clip Ring	1

Index Number	Part Number	Description	Qty.
40	851-682-1	Sensor Casing Assembly (S12 - 12.7)	1
41	149-079-2	Connector	1
42	149-018-2	Cap	1
43	149-562-2	Stopper	1
44	173-842-0	Handle Cover	1
45	149-840-6	Handle Protector	1
46	149-850-5	Casing Connector Packing	1
47	149-853-6	Head Cover Packing	1
48	149-867-6	Front Casing Packing	1
50	944-002-0	Supporting Ring (2.6 x 4.5 x 1)	2
51	944-003-0	Supporting Ring (3 x 5 x 1)	1
52	944-210-0	Supporting Ring (16 x 19.9 x 1)	1
53	945-117-0	Allen Head Bolt (M5 x 16)	8
54	948-423-0	Allen Flush Head Screw (M3 x 6)	2
55	954-005-0	Allen Head Dog Point Screw (M3 x 5)	1
56	965-011-0	Heli-Sert (M5 x 1.5D)	8
57	969-450-0	Pin (G) (3 x 8)	1
58	970-206-0	Pin (H) (3 x 8)	4
59	970-208-0	Pin (H) (3 x 10)	2
60	971-125-0	Pin (2 x 25)	1
61	973-007-0	Roll Pin (2 x 7)	1
62	973-014-0	Roll Pin (2 x 14)	1
63	973-066-0	Roll Pin (2.5 x 6)	1
64	973-068-0	Roll Pin (2.5 x 8)	1
65	973-340-0	Roll Pin (6 x 10)	2
66	976-006-0	Spring (3 x 5 x 0.4)	1
67	976-224-0	Spring (4.5 x 18 x 0.45)	1
68	976-240-0	Spring (4.3 x 14 x 0.4)	1
69	976-794-0	Spring (3.8 x 33 x 0.4) WPC	2
70	977-160-0	Cone Spring (7.4 x 14 x 20)	1
71	981-024-0	Polyurethane Ball (5mm)	1
72	981-002-0	Ball (1/8)	1
73	982-403-0	Ball Bearing (EE4)	1
74	982-950-0	Ball Bearing (16002)	1
75	990-002-0	O-Ring (P4)	1
76	992-021-0	O-Ring (Q16-NTN)	1
77	990-320-0	O-Ring (ART-568-003)	1

Index Number	Part Number	Description	Qty.
78	990-338-0	O-Ring (JW1530-28)	1
79	990-607-0	O-Ring (34 x 2.3)	1
80	990-905-0	O-Ring (SNS-7)	1
81	990-914-0	O-Ring (SNS-16)	2
82	990-910-0	O-Ring (SNS-12.5)	1
83	990-916-0	O-Ring (SNS-18)	1
84	990-920-0	O-Ring (SNS-25)	1
85	990-921-0	O-Ring (SNS-22.4)	1
86	990-938-0	O-Ring (SNS-48)	2
87	990-900-0	O-Ring (SNS-2)(NOK)	2
88	990-972-0	O-Ring (SNS-4)(NOK)	1
89	990-973-0	O-Ring (SNS-5)(NOK)	1
90	996-418-0	Packing (15 x 9 x 1)	2
91	909-915-0	Solenoid Valve Assembly	1
92	909-486-0	Free Bushing (KG-024)	1
93	910-250-0	Joint Cable Assembly (RED)	1
94	909-918-0	Double-Row Socket (DF11-12DC-2C)	1
95	909-733-0	Connector (RF-06)	1
96	909-707-0	Shrink Tube (6 x 30)	1
97	909-708-0	Shrink Tube (8 x 30)	1
98	909-738-0	Shrink Tube (6 x 40)	1
99	909-549-0	LED Lamp Assembly	1
99-1	975-079-0	Spacer (12.7 x 10.3 x 3)	1
100	990-907-0	O-Ring (SNS-9)	1

ACCESSORIES

Index Number	Part Number	Description	Qty.
101	910-263-0	Sensor Cable Assembly (3F5)	1
102	904-190-0	Extension Bar (1/2 x 60) (MC)	1
103	953-205-0	Allen Head Flat Point Screw (M5 x 5)	1
104	971-220-0	Pin (3 x 20)	1
105	990-016-0	O-Ring (P16)	1
107	004-790-2	Suspension Ring	1
108	939-105-0	Allen Wrench (4mm)	1

FOOTNOTES

Note: Liner Casing Assembly = 149-911-6

● Items in Pulse Repair Kit Alpha-110MC-PRK

AIMCO also offers a complete line of standard & special adapters, bits, sockets and extensions.



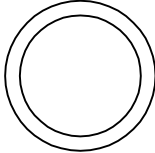


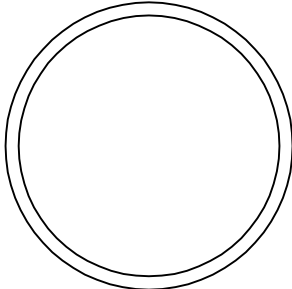


**10000 SE PINE,
PORTLAND, OR 97216
503-254-6600
FAX 503-255-2615**

When ordering spare parts, please specify tool type, part number and description.

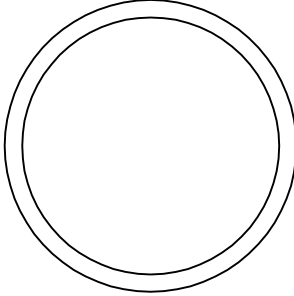


ALPHA-110MC-PRK

(Kit contains following parts)

#/#	Item Number on Exploded View	Part Number	QTY	Description	Material	Drawing / Scketch
1	50	944-002-0	2	Support Ring	Teflon-White	
2	51	944-003-0	1	Support Ring	Teflon-White	
3	52	944-210-0	1	Support Ring	Teflon-White	
4	69	976-794-0	2	Spring	Spring wire	
5	77	990-320-0	1	O-Ring	Buna-Black	
6	78	990-338-0	1	O-Ring	Buna-Black	

ALPHA-110MC-PRK

(Kit contains following parts)

#/#	Item Number on Exploded View	Part Number	QTY	Description	Material	Drawing / Scketch
7	79	990-607-0	1	O-Ring	Buna-Black	
8	87	990-900-0	2	O-Ring	Buna-Black	
9	86	990-973-0	1	O-Ring	Buna-Black	
10	76	992-021-0	1	SU-Ring	Buna-Black	