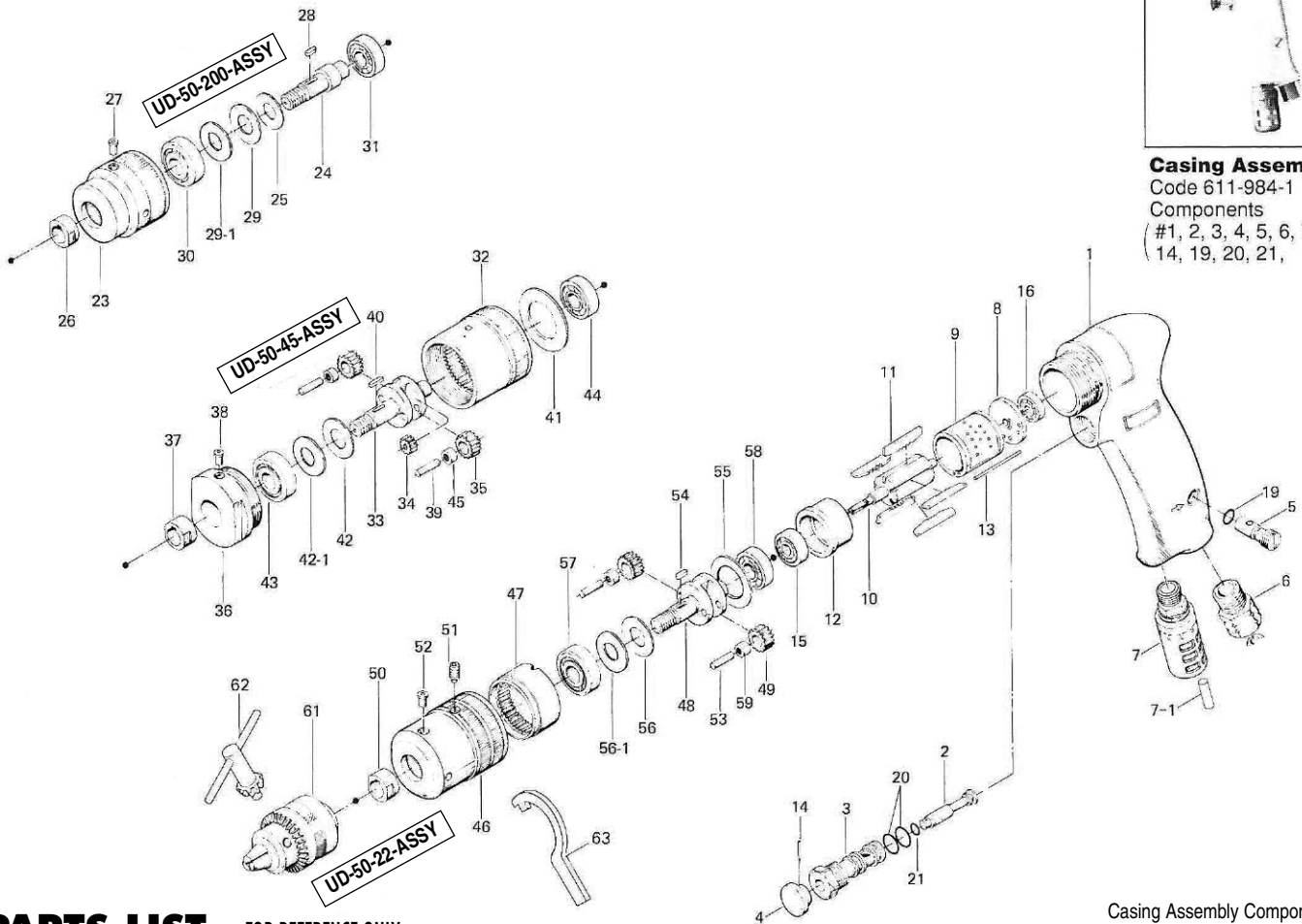


# UD-50 SERIES AIR DRILLS

## EXPLODED VIEW



**Casing Assembly**  
Code 611-984-1  
Components  
(#1, 2, 3, 4, 5, 6, 7, 14, 19, 20, 21, )

## PARTS LIST — FOR REFERENCE ONLY

Casing Assembly Components are marked with "o"

Index Number	Part Number	Description	Qty.
<b>COMMON PARTS</b>			
1	611-025-1	o Casing	1
2	603-100-2	o Valve	1
3	606-101-1	o Valve Bushing	1
4	603-107-2	o Throttle Trigger	1
5	023-240-1	o Regulator Valve	1
6	191-091-5	o Air Inlet Bushing	1
7	235-885-0	o Silencer Assembly	1
7-1	611-744-0	Exhaust Stack	1
8	603-285-1	Rear Plate	1
9	603-286-1	Cylinder	1
10	603-287-1	Rotor	1
11	603-288-1	Blade	5
12	603-289-1	Front Plate	1
13	970-030-0	Pin (H) (1.8X44)	1
14	973-010-0	o Roll Pin (2X10)	1
15	982-021-0	Ball Bearing(626)	1
16	982-026-0	Ball Bearing(634)	1
19	990-003-0	o O-Ring (P5)	1
20	990-610-0	o O-Ring (8X2)	2
21	990-203-0	o O-Ring (JW1516-3)	1
<b>611-005-8 GEAR BOX ASSY. FOR UD-50-200-ASSY</b>			
23	611-039-8	Anvil Casing	1

Index Number	Part Number	Description	Qty.
24	611-319-7	Anvil	1
25	611-334-7	Anvil Spacer	1
26	603-411-1	Chuck Retainer	1
27	968-130-0	Grease Cup (3/16)	1
28	974-008-0	Key (3X8)	1
29	975-149-0	Spacer (22X12.5X0.4)	1
29-1	975-752-0	Adjusting Spacer (15X10xt)	1
30	982-140-0	Ball Bearing (6000Z)	1
31	982-402-0	Ball Bearing (EE-3)	1
<b>611-005-5 GEAR BOX ASSY. FOR UD-50-45-ASSY</b>			
32	611-029-5	Gear Casing	1
33	674-319-1	Anvil	1
34	674-460-1	Rotor Gear	1
35	674-470-1	Planet Gear	2
36	674-070-1	Gear Casing Cover	1
37	603-411-1	Chuck Retainer	1
38	968-130-0	Grease Cup (3/16)	1
39	972-114-0	Roller Pin (4X13.8)	2
40	974-008-0	Key (3X8)	1
41	611-296-4	Front Plate Spacer	1
42	975-162-0	Spacer (24X12.5X0.4)	1
42-1	975-752-0	Adjusting Spacer (15X10xt)	1
43	982-140-0	Ball Bearing (6000Z)	1
44	982-402-0	Ball Bearing (EE-3)	1

Index Number	Part Number	Description	Qty.
45	988-450-0	Needle Roller Bearing (HK-0408) 2	2
<b>611-005-1 GEAR BOX ASSY. FOR UD-50-22-ASSY</b>			
46	611-029-1	Gear Casing	1
47	611-465-1	Internal Gear	1
48	603-319-1	Anvil	1
49	603-470-1	Planet Gear	2
50	603-411-1	Chuck Retainer	1
51	952-205-0	Allen Head Dog Point Screw (M5X5)	1
52	968-130-0	Grease Cup (3/16)	1
53	972-114-0	Roller Pin (4X13.8)	2
54	974-008-0	Key (3 x8)	1
55	975-244-0	Spacer (31.5X26X2)	1
56	975-162-0	Spacer (24X12.5X0.4)	1
56-1	975-752-0	Adjusting Spacer (15X10xt)	1
57	982-140-0	Ball Bearing (6000Z)	1
58	982-402-0	Ball Bearing (EE-3)	1
59	988-450-0	Needle Roller Bearing (HK-0408) 2	2
<b>ACCESSORIES</b>			
61	923-070-0	Chuck (8mm)	1
62	927-050-0	Chuck Handle (5mm)	1
63	937-006-0	Spanner (4X21X150)	1



10000 SE Pine Street  
Portland, OR 97216  
503-254-6600  
FAX 503-255-2615

When ordering spare parts, please specify tool type, part number and description.