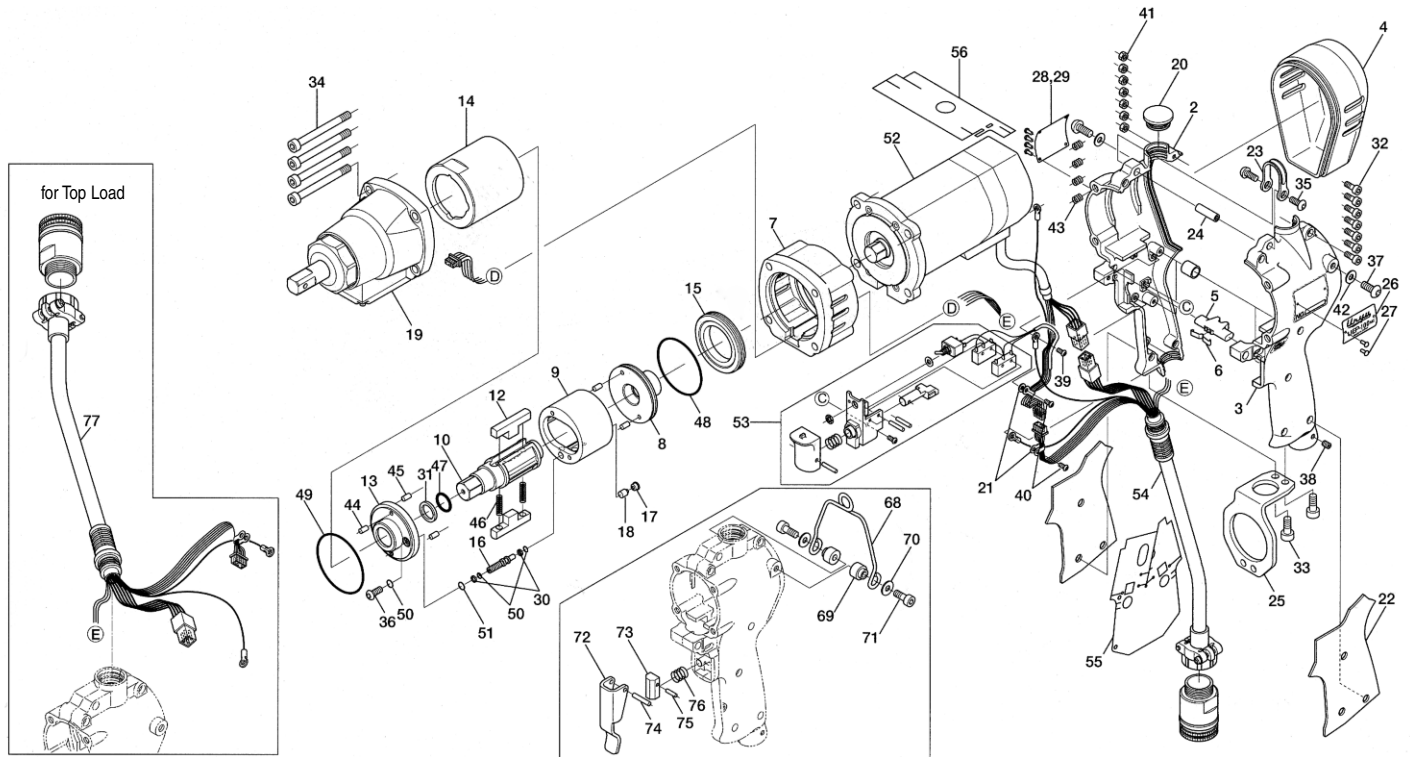


UEP-100MC ELECTRIC OIL-PULSE TOOL

EXPLODED VIEW



PARTS LIST — FOR REFERENCE ONLY

* 137-004-0 Handle Assembly components are marked with "O"

Index Number	Part Number	Description	Qty.
1	137-004-0	Handle Assembly	1
2	137-025-0	O Handle Set	1
3	137-083-0	O Handle Supporter	1
4	137-012-2	Head Cover	1
5	136-212-8	Reverse Lever	1
6	136-217-7	Plate Spring	1
7	137-027-9	Separator	1
8	137-901-9	Liner Rear Plate	1
9	194-902-4	Liner	1
10	137-319-9	Anvil	1
12	194-440-4	Driving Blade	2
13	194-904-4	Liner Front Plate	1
14	194-905-4	Liner Casing	1
15	194-906-4	Liner Casing Setter	1
16	194-907-4	Relief Valve Spindle	1
17	194-969-4	Relief Valve Plate	1
18	195-970-3	Relief Valve	1
19	851-689-1	Sensor Casing Assembly (D12S)	1
20	136-064-7	Plug	1
21	136-670-7	Band	2
22	136-842-0	Handle Cover	1
23	136-790-7	Suspension Bail	1
24	136-791-7	Suspension Bail Base	1
25	136-794-7	Suspension Plate	1
26	137-924-9	Name Plate	1
27	930-205-0	Driver Rivet (No.0X2.6)	6
28	137-993-1	Name Plate (Spec.) (230V)	1
29	137-993-9	Name Plate (Spec.) (115V)	1
30	944-003-0	Supporting Ring (3X5X1)	1 ●
31	944-215-0	Supporting Ring (16X19.9X1.5)	1 ●
32	945-016-0	O Allen Head Bolt (M3X15)	7

Index Number	Part Number	Description	Qty.
33	945-112-0	Allen Head Bolt (M5X12)	2
34	945-265-0	Allend Head bolt (M6X65)	4
35	945-941-0	Hexagon Round Head Bolt (M4X5)	2
36	945-942-0	Hexagon Round Head Bolt (M4X6)	1
37	945-949-0	Hexagon Round Head Bolt (M5X6)	2
38	954-105-0	Allen Head Cone Point Screw (M4X5)	1
39	957-106-0	Cross Pan Head Screw (M4x6)	1
40	957-215-0	Cross Pan Head Screw (M3X5)	2
41	960-020-0	O Hexagon Nut (1-M3)	7
42	961-012-0	Flat Washer (5MM)	2
43	965-021-0	Heli-Sert (M6X1.5D)	4
44	969-450-0	Pin (G) (3X8)	1
45	970-206-0	Pin (H) (3X8)	4
46	976-786-0	Spring (4.5X34.5) (0.55) WPC	2 ●
47	990-156-0	O-Ring (P16) (NTN)	1 ●
48	990-930-0	O-Ring (SNS-40)	1 ●
49	990-932-0	O-Ring (SNS-42)	1 ●
50	990-971-0	O-Ring (SNS-3) (NOK)	3 ●
51	990-974-0	O-Ring (SNS-6) (NOK)	1 ●
52	910-509-0	Electric Motor MBMK042BLSX-400W	1
53	910-602-0	Starting Switch Assembly	1
54	910-526-0	Handle Cable Assembly (CE 1.8)	1
55	910-660-0	Insulation Sheet (Grip)	1
56	910-664-0	Insulation Sheet (Motor 80)	1
57	909-697-0	Shrink Tube (9X10)	1

Index Number	Part Number	Description	Qty.
--------------	-------------	-------------	------

PARTS FOR 230V			
58	910-843-0	Driver Box UEPD-101E-CE (230V)	1
59	910-218-0	Power Cable (230V)	1
60	910-847-0	Driver Box UEPD-101A-UL (115V)	1
61	910-217-0	Power Cable (115V)	1

ACCESSORIES			
62	910-532-0	Carl Cable Assembly	1
63	910-543-0	Joint Cable Assembly (3M)	1
64	910-544-0	Joint Cable Assembly (5M)	1
65	910-545-0	Joint Cable Assembly (10M)	1
66	910-622-0	Sensor Cable Assembly (CE)	1
67	910-632-0	Connecting Cover	1

OPTION: 851-106-1 SUSPENSION RING ASSEMBLY			
68	851-107-1	Suspension Ring	1
69	193-791-6	Suspension Receiver	2
70	193-792-6	Suspension Plate	2
71	945-112-0	Allen Head Bolt (M5X12)	2

OPTION: 851-104-1 LEVER ASSEMBLY			
72	163-107-6	Valve Lever	1
73	850-952-1	Valve Rod Cap	1
74	970-222-0	Pin (H) (3X22)	1
75	970-102-0	Pin (H) (2X16)	1
76	976-296-0	Spring (10.2X15) (0.6)	1

OPTION: FOR TOP LOAD			
77	910-528-0	Handle Cable Assembly (CE)	1

FOOTNOTES

- Items in Pulse Repair Kit uep-100MC-PRK


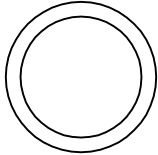

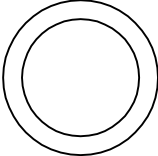
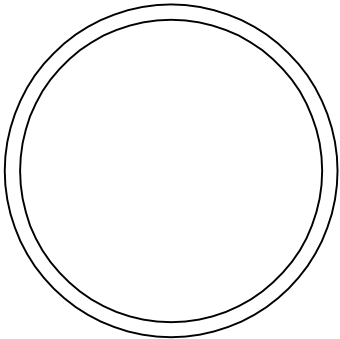


1000 SE Pine Street
Portland, OR 97216
503-254-6600
FAX 503-255-2615

When ordering spare parts, please specify
tool type, part number and description.

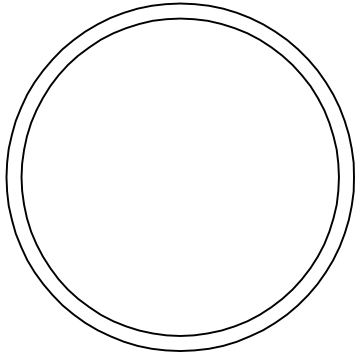

UEP-100-PRK

(Kit contains following parts)

#/#	Item Number on Exploded View	Part Number	QTY	Description	Material	Drawing / Scketch
1	30	944-003-0	2	Support Ring	Teflon-White	
2	31	944-215-0	1	Support Ring	Teflon-White	
3	46	976-786-0	2	Spring	Spring wire	
4	47	990-156-0	1	O-Ring	Buna-Black	
5	48	990-930-0	1	O-Ring	Buna-Black	

UEP-100-PRK

(Kit contains following parts)

#/#	Item Number on Exploded View	Part Number	QTY	Description	Material	Drawing / Scketch
6	49	990-932-0	1	O-Ring	Buna-Black	
7	50	990-971-0	3	O-Ring	Buna-Black	
8	51	990-974-0	1	O-Ring	Buna-Black	