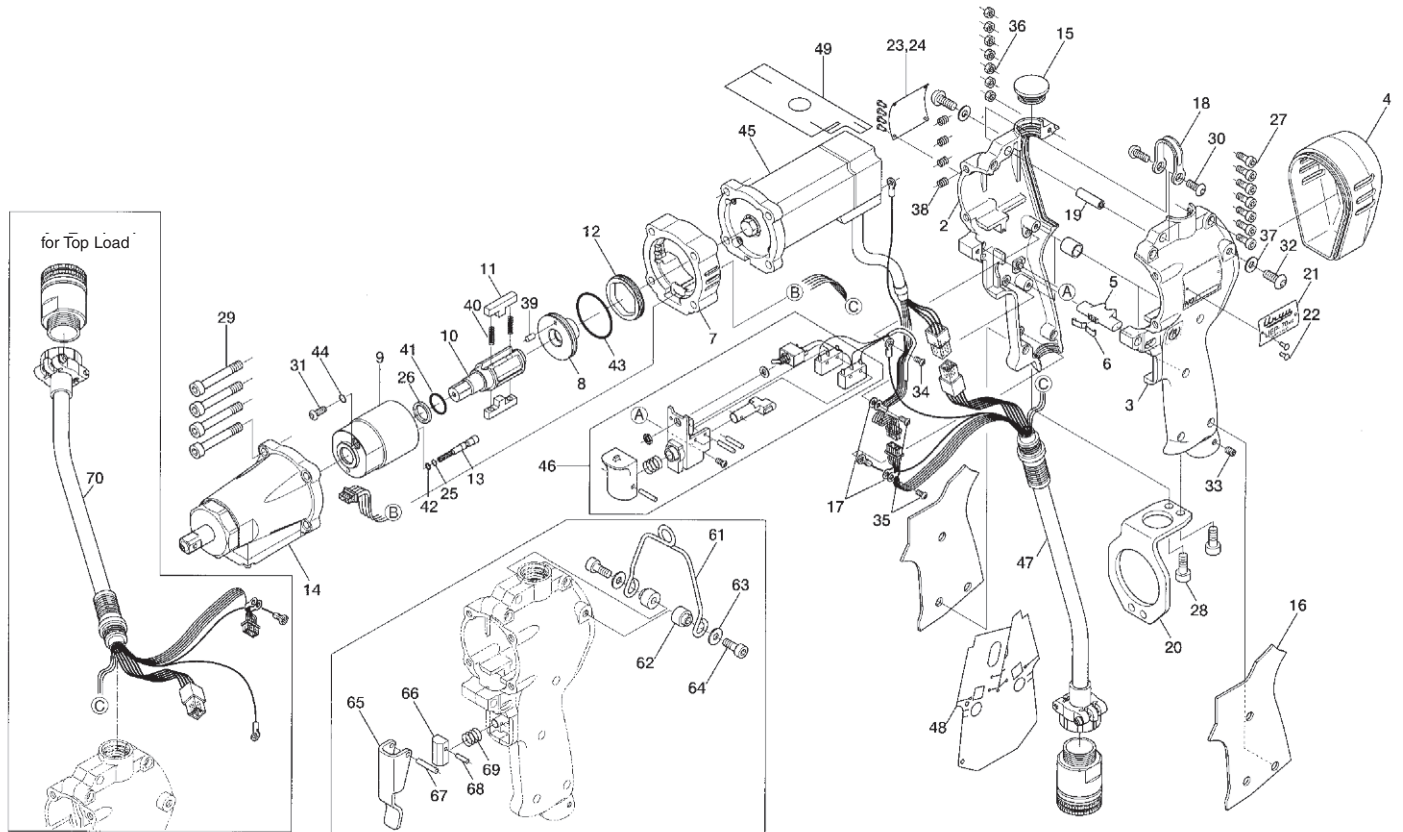


UEP-70MC SERIES ELECTRIC OIL-PULSE TOOL

EXPLODED VIEW



PARTS LIST — FOR REFERENCE ONLY

* 136-004-9 Handle Assembly components are marked with ■

Index Number	Part Number	Description	Qty.	Index Number	Part Number	Description	Qty.	Index Number	Part Number	Description	Qty.
1	136-004-9	Handle Assembly	1	30	945-941-0	Hexagon Round Head Bolt(M4X5)	2	ACCESSORIES			
2	136-025-9	Handle Set ■	1	31	945-942-0	Hexagon Round Head Bolt(M4X6)	1	55	910-532-0	Coil Cable Assembly	1
3	136-083-9	Handle Supporter ■	1	32	945-949-0	Hexagon Round Head Bolt(M5X6)	2	56	910-543-0	Joint Cable Assembly(3M)	1
4	136-012-4	Head Cover	1	33	954-105-0	Allen Head Cone Point Screw(M4X5)	1	57	910-544-0	Joint Cable Assembly(5M)	1
5	136-212-8	Reverse Lever	1	34	957-106-0	Cross Pan Head Screw(M4X6)	1	58	910-545-0	Joint Cable Assembly(10M)	1
6	136-217-7	Plate Spring	1	35	957-215-0	Cross Pan Head Screw(M3X5)	2	59	910-622-0	Sensor Cable Assembly(CE)	1
7	137-027-7	Separator	1	36	960-020-0	Hexagon Nut(1-M3) ■	7	60	910-632-0	Connector Cover	1
8	137-901-7	Liner Rear Plate	1	37	961-012-0	Flat Washer(5MM)	2	Option: 851-109-1 Suspension Ring Assembly			
9	143-902-8	Liner	1	38	965-011-0	Heli-Sert(M5X1.5D)	4	61	851-110-1	Suspension Ring	1
10	137-319-7	Anvil	1	39	970-147-0	Pin(H)(2.5X5)	1	62	193-791-6	Suspension Receiver	2
11	194-440-0	Driving Blade	2	40	976-793-0	Spring(3.7X29)(0.5)	2	63	193-792-6	Suspension Plate	2
12	143-906-8	Liner Casing Setter	1	41	990-152-0	O-Ring(P12)(NTN)	1	64	945-112-0	Allen Head Bolt(M5X12)	2
13	143-970-8	Relief Valve	1	42	990-320-0	O-Ring(ARP-568-003)	1	Option: 851-104-1 Lever Assembly			
14	851-688-1	Sensor Casing Assembly (D04S)	1	43	990-917-0	O-Ring(SNS-24)	1	65	163-107-6	Valve Lever	1
15	136-064-7	Plug	1	44	990-971-0	O-Ring(SNS-3)(NOK)	1	66	850-952-1	Valve Rod Cap	1
16	136-842-0	Handle Cover	1	45	910-507-0	Electric Motor	1	67	970-222-0	Pin(H)(3X22)	1
17	136-670-7	Band	2	46	910-602-0	Starting Switch Assembly	1	68	976-120-0	Pin(H)(2X16)	1
18	136-790-7	Suspension Bail	1	47	910-526-0	Handle Cable Assembly(CE 1.8)	1	69	976-230-0	Spring(9.4X9)(0.6)	1
19	136-791-7	Suspension Bail Base	1	48	910-660-0	Insulation Sheet(Grip)	1	Option: For Top Load			
20	136-794-7	Suspension Plate	1	49	910-661-0	Insulation Sheet(Motor 70)	1	70	910-528-0	Handle Cable Assembly(CE)	1
21	137-924-7	Name Plate	1	50	909-697-0	Shrink Tube(9X10)	4				
22	930-205-0	Driver Rivet(No.0X2.6)	6	PARTS FOR 230V							
23	136-993-9	Name Plate(Spec.)(230V)	1	51	910-842-0	Driver Box UEPD-71E-CE	1				
24	137-993-7	Name Plate(Spec.)(115V)	1	52	910-218-0	Power Cable(230V)	1				
25	944-001-0	Supporting Ring(2.1X4X1)	1	PARTS FOR 115V							
26	944-212-0	Supporting Ring(12X16X1.5)	1	53	910-846-0	Driver Box UEPD-71A-UL	1				
27	945-016-0	Allen Head Bolt(M3X15) ■	7	54	910-217-0	Power Cable(115V)	1				
28	945-112-0	Allen Head Bolt(M5X12)	2								
29	945-140-0	Allen Head Bolt(M5X40)	4								



10000 SE Pine Street
Portland, OR 97216
503-254-6600
FAX 503-255-2615

When ordering spare parts, please specify
tool type, part number and description.

AIMCO also offers a complete line of standard & special
adapters, bits, sockets and extensions.