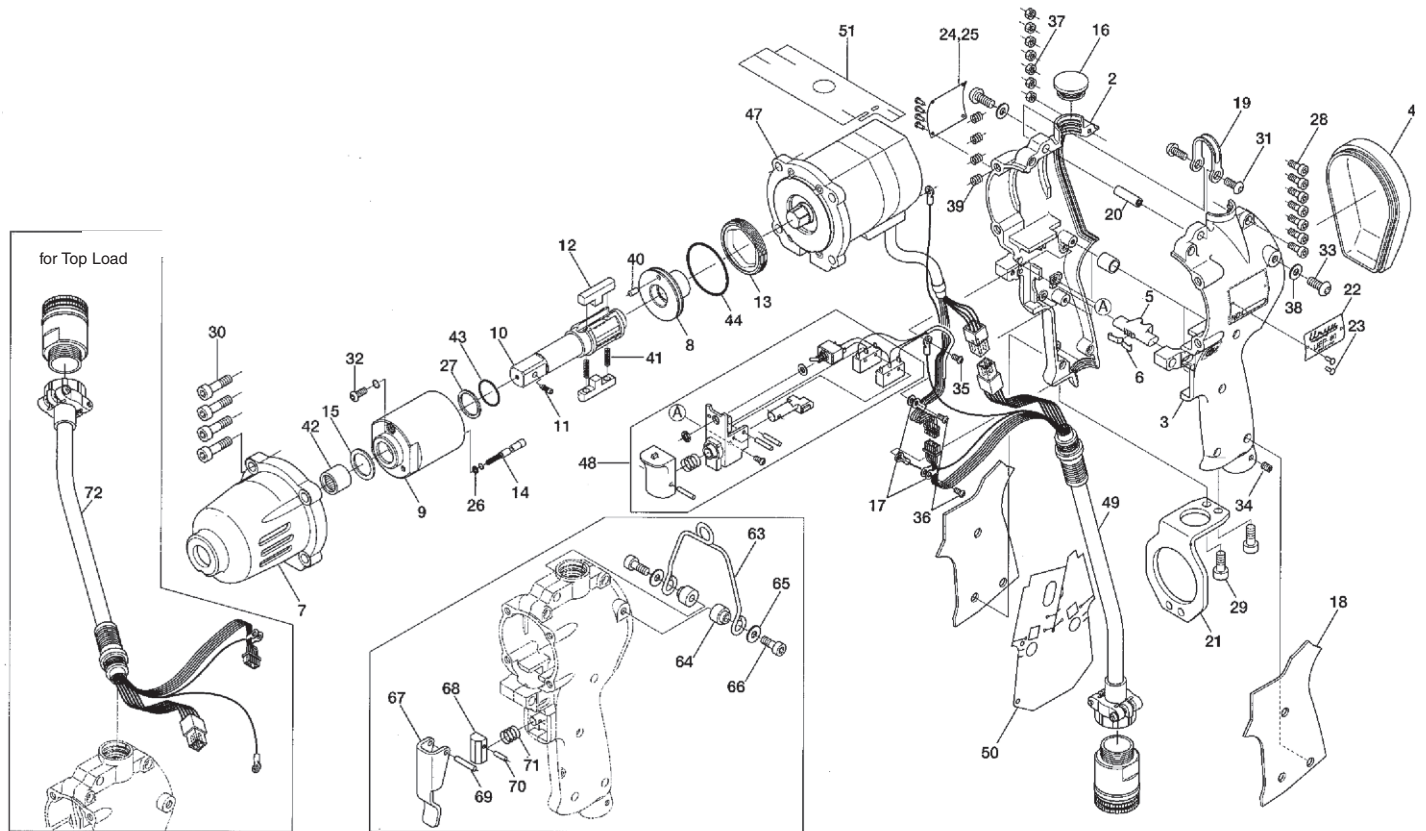


# UEP-80 SERIES ELECTRIC OIL-PULSE TOOL

## EXPLODED VIEW



\* 137-004-0 Handle Assembly components are marked with ■

## PARTS LIST — FOR REFERENCE ONLY

Index Number	Part Number	Description	Qty.	Index Number	Part Number	Description	Qty.	Index Number	Part Number	Description	Qty.
1	137-004-0	Handle Assembly	1	29	945-112-0	Allen Head Bolt(M5X12)	2	<b>PARTS FOR 115V</b>			
2	137-025-0	Handle Set ■	1	30	945-225-0	Allen Head Bolt(M6X25)	4	55	910-846-0	Driver Box UEPD-71A-UL	1
3	137-083-0	Handle Supporter ■	1	31	945-941-0	Hexagon Round Head Bolt(M4X5)	2	56	910-217-0	Power Cable(115V)	1
4	137-012-3	Head Cover	1	32	945-942-0	Hexagon Round Head Bolt(M4X6)	1	<b>ACCESSORIES</b>			
5	136-212-8	Reverse Lever	1	33	945-949-0	Hexagon Round Head Bolt(M5X6)	2	57	910-532-0	Coil Cable Assembly	1
6	136-217-7	Plate Spring	1	34	954-105-0	Allen Head Cone Point Screw(M4X5)	1	58	910-543-0	Joint Cable Assembly(3M)	1
7	137-439-0	Front Casing	1	35	957-106-0	Cross Pan Head Screw(M4X6)	2	59	910-544-0	Joint Cable Assembly(5M)	1
8	137-901-0	Liner Rear Plate	1	36	957-215-0	Cross Pan Head Screw(M3X5)	2	60	910-545-0	Joint Cable Assembly(10M)	1
9	143-902-9	Liner	1	37	960-020-0	Hexagon Nut(1-M3) ■	7	61	939-091-0	Allen Wrench (1.5mm)	1
10	143-319-9	Anvil	1	38	961-012-0	Flat Washer(5MM)	2	62	910-632-0	Connector Cover	1
11	891-304-1	Socket Pin Assembly	1	39	965-021-0	Heli-Sert(M6X1.5D)	4	<b>Option: 851-106-1 Suspension Ring Assembly</b>			
12	137-440-0	Driving Blade	2	40	970-204-0	Pin(H)(3X6)	1	63	851-107-1	Suspension Ring	1
13	143-906-9	Liner Casing Setter	1	41	976-787-0	Spring(3.8X33)(0.45)WPC	2	64	193-791-6	Suspension Receiver	2
14	143-970-9	Relief Valve	1	42	988-404-0	Needle Roller Bearing(F1612)	1	65	193-792-6	Suspension Plate	2
15	147-327-8	Anvil Front Spacer	1	43	990-156-0	O-Ring(P16)(NTN)	1	66	945-112-0	Allen Head Bolt(M5X12)	2
16	136-064-7	Plug	1	44	990-915-0	O-Ring(SNS-29)	1	<b>Option: 851-104-1 Lever Assembly</b>			
17	136-670-7	Band	2	45	990-970-0	O-Ring(SNS-2)(NOK)	1	67	163-107-6	Valve Lever	1
18	136-842-0	Handle Cover	1	46	990-971-0	O-Ring(SNS-3)(NOK)	1	68	850-952-1	Valve Rod Cap	1
19	136-790-7	Suspension Bail	1	47	910-508-0	Electric Motor(MBMK022BEL-200W)	1	69	970-222-0	Pin(H)(3X22)	1
20	136-791-7	Suspension Bail Base	1	48	910-602-0	Starting Switch Assembly	1	70	970-102-0	Pin(H)(2X16)	1
21	136-794-7	Suspension Plate	1	49	910-526-0	Handle Cable Assembly(CE1.8)	1	71	976-296-0	Spring(10.2X15)(0.6)	1
22	137-924-0	Name Plate	1	50	910-660-0	Insulation Sheet(Grip)	1	<b>Option: For Top Load</b>			
23	930-205-0	Driver Rivet(No.0X2.6)	6	51	910-664-0	Insulation Sheet(Motor 80)	1	72	910-528-0	Handle Cable Assembly(CE)	1
24	136-993-9	Name Plate(Spec.)(230V)	1	52	909-697-0	Shrink Tube(9X10)	4				
25	137-993-7	Name Plate(Spec.)(115V)	1	<b>PARTS FOR 230V</b>							
26	944-002-0	Supporting Ring(2.6X4.5X1)	1	53	910-842-0	Driver Box UEPD-71E-CE	1				
27	944-215-0	Supporting Ring(16X19.9X1.5)	1	54	910-218-0	Power Cable(230V)	1				
28	945-016-0	Allen Head Bolt(M3X15) ■	7								




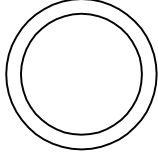

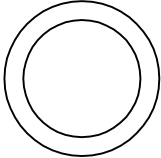
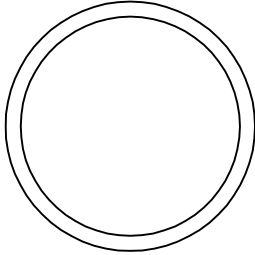

10000 SE PINE,  
PORTLAND, OR 97216  
503-254-6600  
FAX 503-255-2615

When ordering spare parts, please specify  
tool type, part number and description.

● Items in Pulse Repair Kit UEP-80-PRK

# UEP-80-PRK

(Kit contains following parts)

#/#	Item Number on Exploded View	Part Number	QTY	Description	Material	Drawing / Scketch
1	26	944-002-0	1	Support Ring	Teflon-White	
2	27	944-215-0	1	Support Ring	Teflon-White	
3	41	976-787-0	2	Spring	Spring wire ø.45 mm	
4	43	990-156-0	1	O-Ring	Buna-Black	
5	44	990-915-0	1	O-Ring (SNS-29)	Buna-Black	
6	45	990-970-0	1	O-Ring	Buna-Black	
7	46	990-971-0	1	O-Ring	Buna-Black	