

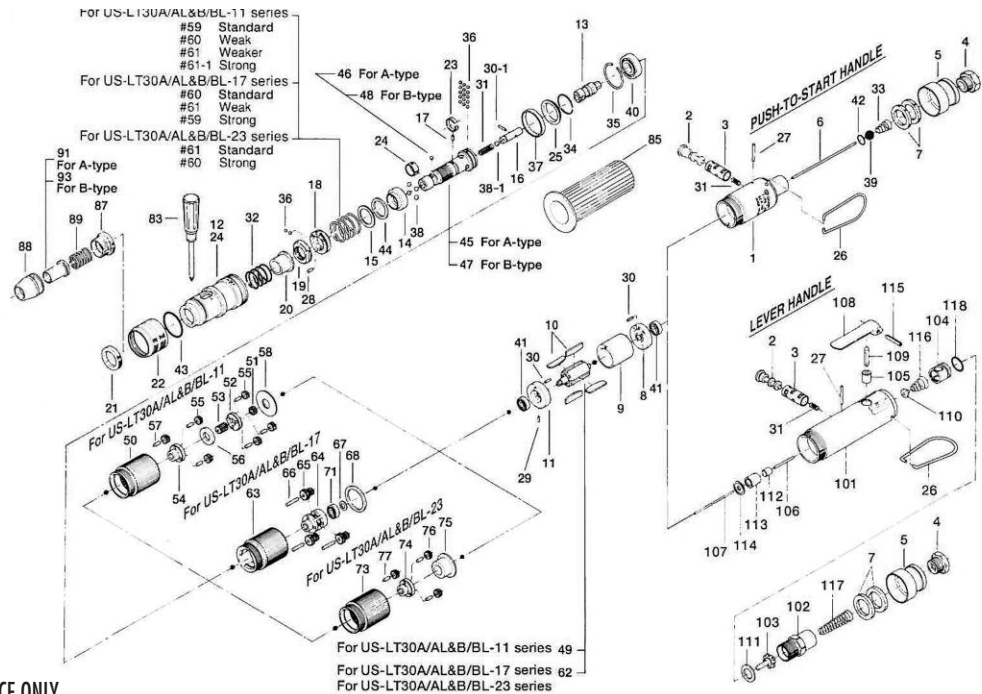
# US-LT30 & LT30L SERIES SCREW DRIVERS

## EXPLODED VIEW

### Optional Silencers



#84 408-088-2  
Silencer  
Assembly



## PARTS LIST — FOR REFERENCE ONLY

Index Number	Part Number	Description	Qty.
<b>US-LT30 SERIES PUSH-TO-START HANDLE</b>			
1	471-025-8	Casing	1
2	893-056-1	Reverse Valve (Locking)	1
3	471-211-7	Reverse Valve Bushing	1
4	480-091-8	Air Inlet Bushing	1
5	408-782-1	Exhaust Deflector	1
6	471-104-7	Valve Rod	1
7	471-835-5	Filter (K100)	2
26	401-790-1	Suspension Ring	1
27	972-020-0	Roller Pin (2X19.8)	1
31	976-058-0	Spring (4.5X11)	2
33	977-157-0	Cone Spring (7X11X20)	1
39	981-208-0	Ball (5/16)	1
42	990-004-0	O Ring (P-6)	1
12	471-369-7	Clutch Casing	1
<b>US-LT30L SERIES LEVER HANDLE</b>			
101	469-025-5	Casing	1
4	480-091-8	Air Inlet Bushing	1
102	461-097-6	Air Inlet Connector	1
103	259-100-0	Valve	1
104	461-102-6	Valve Bushing	1
105	553-103-1	Valve Rod Bushing	1
106	970-105-0	Pin (H)(2X24)	1
107	462-104-7	Valve Rod	1
108	466-107-5	Valve Lever	1
109	469-114-5	Valve Pin	1
110	259-254-0	Shut-Off Valve	1
111	996-424-0	Packing	1
112	444-106-8	Valve Rod Cap	1
113	461-567-6	Bushing	1
2	893-056-1	Reverse Valve (Locking)	1
3	471-211-7	Reverse Valve Bushing	1
5	408-782-1	Exhaust Deflector	1
7	471-835-5	Filter (K100)	2
114	469-291-5	Rear Plate Spacer	1
26	401-790-1	Suspension Ring	1
27	972-020-0	Roller Pin (2X19.8)	1
115	973-118-0	Roll Pin (3X18)	1
31	976-058-0	Spring (4.5X11)	2
116	977-071-0	Cone Spring (5.5X11.5X15)	1
117	977-155-0	Cone Spring (7X10X35)	1
118	990-911-0	O Ring (SNS-12)	1
24	462-369-7	Clutch Casing	1
37	462-397-7	Gear Casing Flange	1
<b>COMMON PARTS</b>			
8	471-285-7	Rear Plate	1

Index Number	Part Number	Description	Qty.
9	471-286-7	Cylinder	1
10	471-288-0	Blade	4
11	471-289-7	Front Plate	1
13	471-346-5	Cam	1
14	471-375-8	Cam Ring	1
15	471-164-8	Spring Setter	1
16	471-318-5	Pilot Pin	1
17	471-764-7	Notch Pin	1
18	471-562-7	Retainer	1
19	471-257-7	Regulating Screw	1
20	471-351-6	Bit Sleeve	1
21	471-567-6	Bushing	1
22	471-370-7	Clutch Casing Sleeve	1
23	471-670-7	Band	1
24	471-356-7	Bit Band	1
25	462-334-7	Anvil Spacer	1
28	970-091-0	Pin (H)(2X4.5)	1
29	973-001-0	Roll Pin (1.5X6)	1
30	973-003-0	Roll Pin (1.5X8)	2
30-1	969-470-0	Pin (2X8)	1
32	976-450-0	Spring (18.5X10)	1
34	978-185-0	Snap Ring (19X1)	1
35	978-229-0	Snap Ring (23X1)	1
36	981-001-0	Ball (3/32)	17
38	981-003-0	Ball (5/32)	4
38-1	981-004-0	Ball (3/16)	1
40	982-901-0	Ball Bearing (6900)	1
41	987-041-0	Mini. Ball Bearing (R1350ZZ)	2
43	990-919-0	O Ring (SNS-22)	1
44	944-016-0	Back-up Ring (P-16)	1
<b>PARTS FOR US-LT30A &amp; 30AL SERIES</b>			
45	471-319-5	Anvil	1
46	981-003-0	Ball (5/32)	1
<b>PARTS FOR US-LT30B &amp; 30BL SERIES</b>			
47	471-319-2	Anvil	1
48	981-002-0	Ball (1/8)	1
<b>PARTS FOR US-LT30A/AL-11 AND 30B/BL-11</b>			
49	471-287-7	Rotor	1
50	471-029-7	Gear Casing	1
51	471-460-7	Rotor Gear	1
52	471-480-7	First Gear Cage	1
53	471-445-7	Middle Gear	1
54	471-485-7	Second Gear Cage	1
55	471-471-7	Second Planet Gear	6
56	471-483-7	Gear Cage Spacer	1
57	972-033-0	Roller Pin (2.5X8)	6

Index Number	Part Number	Description	Qty.
58	975-178-0	Spacer (26X10X1.5)	1
59	976-472-0	Spring (20.6X22) Standard	1
60	976-493-0	Spring (20.8X22) Weak	1
61	976-471-0	Spring (19.4X22) Weaker	1
61-1	976-504-0	Spring (21 X22) Strong	1
<b>Parts for US-LT30A/AL-17 and 30B/BL-17</b>			
62	471-287-5	Rotor	1
63	471-029-5	Gear Casing	1
64	471-480-5	Gear Cage	1
65	471-470-6	Planet Gear	3
66	972-036-0	Roller Pin (2.5X15.8)	3
67	975-009-0	Spacer (9X5.2X0.3)	1
68	975-188-0	Spacer (26X20X1.5)	1
71	987-013-0	Mini. Ball Bearing (R1350)	1
60	976-493-0	Spring (20.8X22) Standard	1
61	976-471-0	Spring (19.4X22) Weak	1
59	976-472-0	Spring (20.6X22) Strong	1
62	471-287-5	Rotor	1
<b>Parts for US-LT30A/AL-23 and 30B/BL-23</b>			
73	471-029-7	Gear Casing	1
74	471-480-3	Gear Cage	1
75	471-483-3	Gear Cage Spacer	1
76	471-470-3	Planet Gear	3
77	972-033-0	Roller Pin (2.5X8)	3
61	976-471-0	Spring (19.4X22) Standard	1
60	976-493-0	Spring (20.8X22) Strong	1
<b>ACCESSORIES</b>			
83	939-402-0	Manual Driver No. 2	1
84	408-088-2	Silencer Assembly	1
85	471-083-7	Casing Protector	1

### For Slotted Head Bit and Finder

(Remove #21 471-567-6 Bushing and use following)	1
87 471-082-7	Bit Casing Set Screw
88 471-057-7	Bit Casing
89 976-330-0	Spring (13.8X18X0.8)
91 917-299-0	Finder for A-type
93 917-350-0	Finder for B-type

AIMCO also offers a complete line of standard & special adapters, bits, sockets and extensions.

### FOOTNOTES



10000 SE Pine Street  
Portland, OR 97216  
503-254-6600  
FAX 503-255-2615

When ordering spare parts, please specify  
tool type, part number and description.