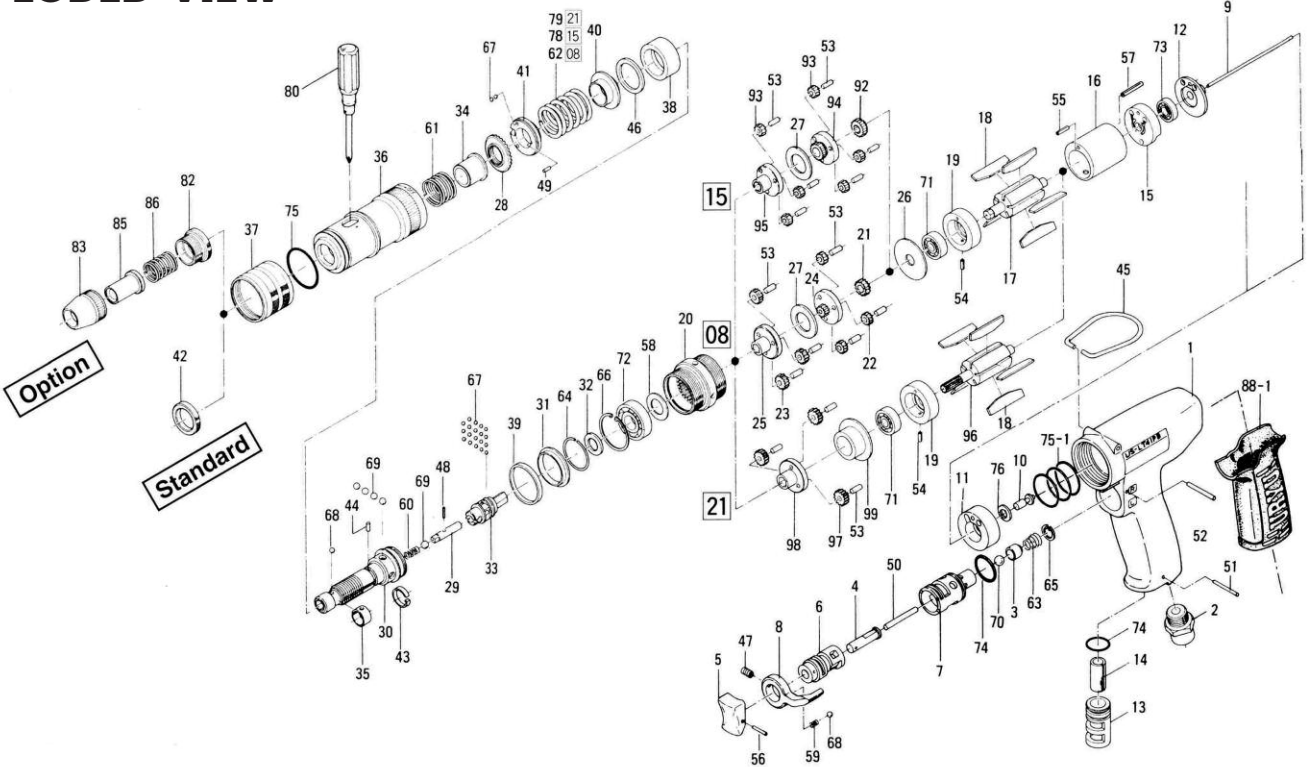


# US-LT41PB SERIES SCREWDRIVERS

## EXPLODED VIEW



## PARTS LIST — FOR REFERENCE ONLY

Index Number	Part Number	Description	Qty.	Index Number	Part Number	Description	Qty.	Index Number	Part Number	Description	Qty.
1	443-025-6	Casing	1	46	944-019-0	Support Ring (P19)	1	24	472-480-7	First Gear Cage	1
2	480-091-8	Air Inlet Bushing	1	47	952-106-0	Allen Head Dog Point Screw (M4 x 6)	1	25	472-485-7	Second Gear Cage	1
3	480-100-9	Valve	1	48	969-470-0	Pin (E) (2 x 8)	1	26	472-807-7	Spacer	1
4	443-103-5	Valve Rod Bushing	1	49	970-092-0	Pin (H) (2 x 5.5)	1	27	496-483-1	Gear Cage Spacer	1
5	177-107-5	Valve Lever	1	50	970-228-0	Pin (H) (3 x 28)	1	53	972-089-0	Needle Roller (3 x 8)	6
6	480-210-9	Reverse Valve	1	51	971-120-0	Pin (2 x 20)	1	62	976-515-0	Spring (22.7 x 28) (2.6)	1
7	480-211-9	Reverse Valve Bushing	1	52	971-123-0	Pin (2 x 23)	1	<b>For US-LT41PB-15</b>			
8	480-212-8	Reverse Lever	1	54	973-006-0	Roll Pin (2 x 6)	1	17	472-287-7	Rotor	1
9	443-104-5	Valve Rod	1	55	973-010-0	Roll Pin (2 x 10)	1	92	472-460-5	Rotor Gear	1
10	443-254-5	Shut-Off Valve	1	56	973-012-0	Roll Pin (2 x 12)	1	93	472-470-5	First Planet Gear	6
11	443-282-6	Handle Bushing	1	57	973-018-0	Roll Pin (2 x 18)	1	94	472-480-5	First Gear Cage	1
12	443-291-5	Rear Plate Spacer	1	58	975-106-0	Spacer (18.5 x 11 x 1)	1	95	472-485-5	Second Gear Cage	1
13	480-780-8	Exhaust Stack	1	59	976-006-0	Spring (3 x 5) (0.4)	1	26	472-807-7	Spacer	1
14	177-835-6	Filter	1	60	976-058-0	Spring (4.5 x 11) (0.4)	1	27	496-483-1	Gear Cage Spacer	1
15	467-285-7	Rear Plate	1	61	976-450-0	Spring (18.5 x 10) (1.0)	1	53	972-089-0	Needle Roller (3 x 8)	6
16	443-286-5	Cylinder	1	63	977-150-0	Cone Spring (6.8 x 8.5 x 8) (0.4)	1	78	976-516-0	Spring (22.1 x 28) (2.3)	1
18	472-288-0	Blade (PC)	5	64	978-218-0	Snap Ring (22 x 1)	1	<b>For US-LT41PB-21</b>			
19	472-289-7	Front Plate	1	65	979-002-0	Inner Snap Ring (9)	1	96	472-287-3	Rotor	1
20	463-029-8	Gear Casing	1	66	979-326-0	Inner Snap Ring (IRTW-26)	1	97	472-470-3	Planet Gear	3
28	472-257-8	Regulating screw	1	67	981-001-0	Ball (3/32)	21	98	472-480-3	Gear Cage	1
29	471-318-5	Pilot Pin	1	68	981-002-0	Ball (1/8)	2	99	472-807-3	Spacer	1
30	472-319-7	Anvil	1	69	981-004-0	Ball (3/16)	5	53	972-089-0	Needle Roller (3 x 8)	3
31	463-334-7	Anvil Spacer	1	70	981-206-0	Ball (1/4)	1	79	976-517-0	Spring (21.5 x 31) (2.0)	1
32	461-344-6	Cam Retainer	1	71	982-063-0	Ball Bearing (606ZZ)	1	<b>ACCESSORIES</b>			
33	472-346-5	Cam	1	72	982-100-0	Ball Bearing (6000)	1	80	939-402-0	Manual Driver (No.2)	1
34	472-351-7	Bit Sleeve	1	73	987-039-0	Miniature Ball Bearing (R1560ZZ)	1	<b>OPTIONAL ACCESSORIES</b>			
35	471-356-7	Bit Band	1	74	990-912-0	O-Ring (SNS-14)	2	For Slotted Head Bit and Finder (in common), take out 42 and use following:			
36	463-369-7	Clutch Casing	1	75	990-923-0	O-Ring (SNS-26)	1	82	472-082-7	Bit Casing Set Screw	1
37	472-370-7	Clutch Casing Sleeve	1	75-1	990-333-0	O-Ring (JW1530-23)	3	83	471-057-7	Bit Casing	1
38	472-375-7	Cam Ring	1	76	996-411-0	Packing (11 x 6 x 1)	1	85	917-350-0	Finder (7.3 x 56 x 24)	1
39	463-397-7	Nut Flange	1	88-1	174-842-8	Handle Jacket	1	86	976-330-0	Spring (13.8 x 18) (0.8)	1
40	472-379-8	Retainer	1	<b>For US-LT41PB-08</b>				<b>FOOTNOTES</b>			
41	472-562-8	Stopper	1	17	472-287-7	Rotor	1	AIMCO also offers a complete line of standard & special adapters, bits, sockets and extensions.			
42	472-567-7	Bushing	1	21	472-460-7	Rotor Gear	1	<b>REVISED 1/12</b>			
43	471-670-7	Band	1	22	472-470-7	First Planet Gear	3				
44	471-764-7	Notch Pin	1	23	472-471-7	Second Planet Gear	3				
45	010-790-1	Suspension Ring	1								



10000 SE Pine Street  
Portland, OR 97216  
503-254-6600  
FAX 503-255-2615

When ordering spare parts, please specify  
tool type, part number and description.

### FOOTNOTES

AIMCO also offers a complete line of standard & special adapters, bits, sockets and extensions.