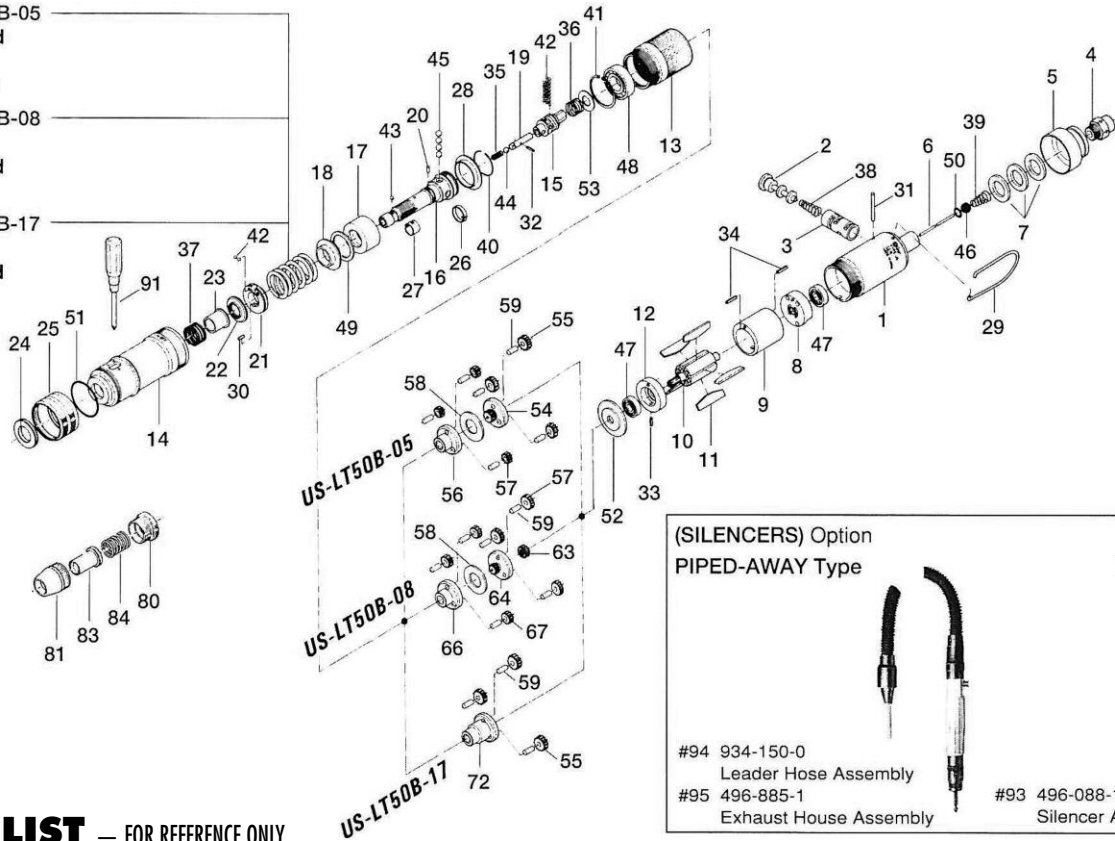


# US-LT50B SERIES SCREWDRIVER

## EXPLODED VIEW

- For US-LT50B-05
  - #60 Standard
  - #61 Weaker
  - #62 Weakest
- For US-LT50B-08
  - #60 Strong
  - #61 Standard
  - #62 Weaker
- For US-LT50B-17
  - #61 Strong
  - #62 Standard



## PARTS LIST — FOR REFERENCE ONLY

Index Number	Part Number	Description	Qty.
<b>US-LT50 series common parts</b>			
1	444-025-4	Casing	1
2	893-058-1	Reverse Valve	1
3	444-211-4	Reverse Valve Bushing	1
4	480-091-8	Air Inlet Bashing	1
5	444-782-4	Exhaust Deflector	1
6	444-104-4	Valve Rod	1
7	161-835-4	Filter	1
8	444-285-4	Rear Plate	1
9	444-286-4	Cylinder	1
10	444-287-4	Rotor	1
11	444-288-6	Blade (PC)	5
12	444-289-4	Front Plate	1
13	444-029-4	Gear Casing	1
14	444-369-4	Clutch Casing	1
15	444-346-3	Cam	1
16	444-319-4	Anvil	1
17	444-375-3	Cam Ring	1
16	444-379-3	Retainer	1
19	471-318-5	Pilot Pin	1
20	444-764-4	Notch Pin	1
21	444-562-4	Spring Holder	1
22	472-257-8	Regulating Screw	1
23	472-351-7	Bit Sleeve	1
24	444-567-4	Bashing	1
25	444-370-4	Clutch Casing Sleeve	1
26	444-670-4	Band	1
27	471-356-7	Bit Band	1
28	444-334-8	Anvil Spacer	1
29	191-790-1	Suspension Ring	1
30	970-092-0	Pin (H) (2 x 5.5)	1
31	970-226-0	Pin (H) (3 x 26)	1
32	969-470-0	Pin (2 x 8)	1
33	973-008-0	Roll Pin (2 x 8)	1
34	973-072-0	Roll Pin (2.5 x 12)	2
35	976-058-0	Spring (4.5 x 11)	1

Index Number	Part Number	Description	Qty.
36	977-103-0	Cone Spring (6 x 9.5 x 16)	1
37	976-450-0	Spring (18.5 x 10)	1
38	976-332-0	Spring (6 x 9.5 x 16)	1
39	977-157-0	Cone Spring (7 x 11 x 20)	1
40	978-229-0	Snap Ring (23 x 1)	1
41	979-025-0	Inner Snap Ring (32)	1
42	981-001-0	Ball (3/32)	24
43	981-002-0	Ball (1/8)	1
44	981-004-0	Ball (3/16)	1
45	981-005-0	Ball (7/32)	4
46	981-208-0	Ball (5/16)	1
47	982-066-0	Ball Bearing (607ZZ)	2
48	982-102-0	Ball Bearing (6002)	1
49	944-023-0	Supporting Ring (P-22A)	1
50	990-005-0	O-Ring (P-7)	1
51	990-935-0	O-Ring (SNS-31.5)	1
52	444-807-4	Spacer	1
53	975-109-0	Spacer (20 x 9.5 x 1.5)	1
<b>Parts for US-LT50B-05</b>			
54	444-480-4	First Gear Cage	1
55	444-470-4	First Planet Gear	3
56	444-485-4	Second Gear Cage	1
57	444-471-4	Second Planet Gear	3
58	444-483-4	Gear Cage Spacer	1
59	972-110-0	Needle Roller (4 x 10)	6
60	976-620-0	Spring (Standard: 27.5 x 36)	1
<b>Option</b>			
61	976-614-0	Spring (Weaker: 27 x 36)	1
62	976-588-0	Spring (Weakest: 25 x 38)	1
<b>Parts for US-LT50B-08</b>			
57	444-471-4	Second Planet Gear	3
58	444-483-4	Gear Cage Spacer	1
59	972-110-0	Needle Roller (4 x 10)	6
61	976-614-0	Spring (Weaker: 27 x 36)	1

Index Number	Part Number	Description	Qty.
63	444-460-3	Rotor Gear	1 ✖
64	444-480-3	First Gear Cage	1 ✖
65	444-471-4	First Planet Gear	3 ✖
66	444-485-3	Second Gear Case	1 ✖
67	444-471-3	Second Planet Gear	3 ✖
<b>Option</b>			
60	976-620-0	Spring (Standard: 27.5 x 36)	1
62	976-588-0	Spring (Weakest: 25 x 38)	1
<b>Parts for US-LT50B-17</b>			
55	444-470-4	First Planet Gear	3
59	972-110-0	Needle Roller (4 x 10)	6
62	976-588-0	Spring (Weakest: 25 x 38)	1
72	444-480-2	Gear Cage	1 ●
<b>Option</b>			
61	976-614-0	Spring (Weaker: 27 x 36)	1
<b>For Slotted Head Bit and Finder</b>			
(Remove #24 444-567-4 Bushing)			
80	945-222-0	Allen Head Bolt (M6 x 22)	1
81	496-088-1	Silencer Assembly	1
83	496-885-1	Exhaust House Assembly	1
84	976-330-0	Spring (11.8 X 18 X0.8)	1
<b>ACCESSORIES</b>			
91	939-402-0	Manual Driver (No.2)	1
<b>OPTIONAL ACCESSORIES</b>			
<b>For Direct Type Silencer</b>			
93	496-088-1	Silencer Assembly	1
<b>For Piped-away Type</b>			
94	434-150-0	Leader Hose Assembly	1
95	496-885-1	Exhaust House Assembly	1

AIMCO also offers a complete line of standard & special adapters, bits, sockets and extensions.



10000 SE Pine Street  
Portland, OR 97216  
503-254-6600  
FAX 503-255-2615

When ordering spare parts, please specify tool type, part number and description.

### FOOTNOTES