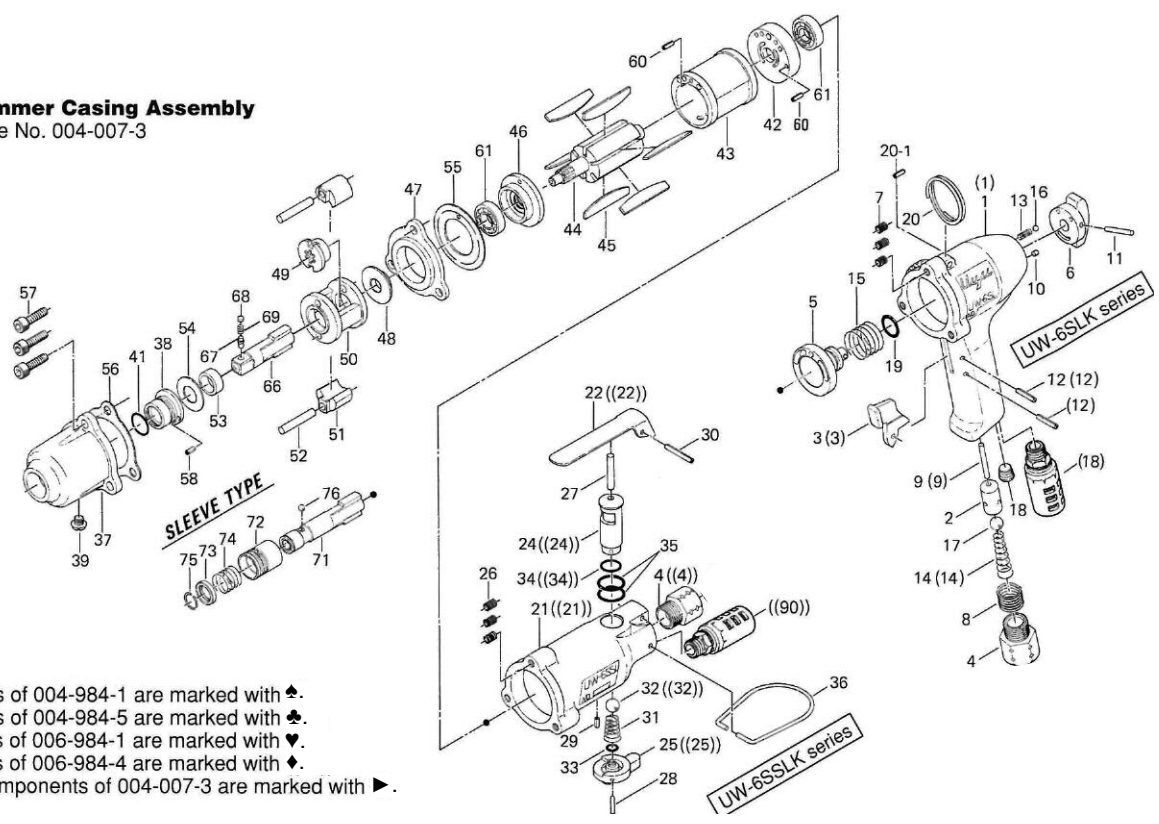


# UW-6SL(D)K, UW-6SLR(D)K, UW-6SSL(D)K, UW-6SSLR(D)K IMPACT WRENCHES

## EXPLODED VIEW



**Hammer Casing Assembly**  
Code No. 004-007-3



Handle Assembly components of 004-984-1 are marked with ♠.  
 Handle Assembly components of 004-984-5 are marked with ♣.  
 Casing Assembly components of 006-984-1 are marked with ♥.  
 Casing Assembly components of 006-984-4 are marked with ♦.  
 Hammer Casing Assembly components of 004-007-3 are marked with ►.

## PARTS LIST — FOR REFERENCE ONLY

Index Number	Part Number	Description	Qty.
1	004-984-1	HANDLE ASSEMBLY1	
2	004-025-2	Handle	1 ♠
3	010-102-1	Valve Bushing	1 ♣♣
4	004-107-1	Throttle Trigger	1 ♠
5	185-091-7	Air Inlet Bushing	1 ♣♣
6	004-210-1	Reverse Valve	1 ♣♣
7	004-212-1	Reverse Lever	1 ♣♣
8	965-011-0	Heli-Sert(M5X1.5D)	3 ♣♣
9	965-073-0	Heli-Sert (UNF5/8 N6)	1 ♣♣
10	970-228-0	Pin (H) (3X28)	1 ♣
11	970-206-0	Pin (H) (3X8)	1 ♣♣
12	973-124-0	Pin (3 X 24)	1 ♣♣
13	973-116-0	Roll Pin (3X16)	1 ♣
14	976-027-0	Spring (3 X11)	1 ♣♣
15	977-155-0	Cone Spring (7X10X35)	1 ♣
16	976-485-0	Spring (20.2 X14)	1 ♣♣
17	981-002-0	Ball (1/8)	1 ♣♣
18	981-207-0	Ball (9/32)	1 ♣♣
19	966-100-0	Hexagon Head Plug (1/8)	1 ♣
20	990-010-0	O-Ring (P-11)	1 ♣♣
21	004-790-2	Suspension Ring	1 ♣
20-1	973-340-0	Roll Pin (6X10)	1 ♣♣

PARTS FOR UW-6SLRK & UW-6SLRDK			
(1)	004-984-5	HANDLE ASSEMBLY	♣
(3)	004-025-5	Handle	1 ♣
(9)	026-107-7	Valve Lever	1 ♣
(12)	970-233-0	Pin (H)3X33	1 ♣
(14)	973-122-0	Roll Pin 3X22	2 ♣
(18)	977-178-0	Cone Spring 7.8X9.8X22(0.8)	1 ♣
(18)	235-885-0	Exhaust Stack Assembly	1 ♣

Other parts are used in common with Handle Assembly for UW-6SLK & UW-6SLDK

PARTS FOR UW-6SSLK & UW-6SSLDK			
006-984-1	CASING ASSEMBLY		1

Index Number	Part Number	Description	Qty.
21	006-025-2	Casing	1 ♥
22	008-107-1	Throttle Trigger	1 ♥
4	185-091-7	Air Inlet Bushing	1 ♥
24	008-210-1	Reverse Valve	1 ♥
25	008-212-1	Reverse Lever	1 ♥
26	965-011-0	Heli-Sert(M5X1.5D)	3 ♥♦
27	970-328-0	Pin (H) (4X27)	1 ♥♦
28	971-122-0	Pin (2X22)	1 ♥♦
29	973-006-0	Roll Pin (2X6)	1 ♥♦
30	973-124-0	Roll Pin (3X24)	1 ♥♦
31	977-154-0	Cone Spring (7X7.5X17)	1 ♥♦
32	981-208-0	Ball (5/16)	1 ♥♦
33	990-003-0	O-Ring (P-5)	1 ♥♦
34	990-008-0	O-Ring (P-10)	1 ♥♦
35	990-014-0	O-Ring (P-14)	2 ♥♦
36	010-790-1	Suspension Ring	1

PARTS FOR UW-6SSLRK & UW-6SSLRDK			
006-984-4	CASING ASSEMBLY		1 ♦
((4))	180-091-6	Air Inlet Bushing	1 ♦
((21))	006-025-4	Casing	1 ♦
((22))	500-107-1	Throttle Trigger	1 ♦
((24))	418-210-1	Reverse Valve	1 ♦
((25))	440-212-1	Reverse Lever	1 ♦
((32))	981-207-0	Ball 9/32	1 ♦
((34))	990-007-0	O-ring (P-9)	1 ♦
((90))	235-885-0	Exhaust Stack Assembly	1 ♦

Other parts are used in common with Handle Assembly for UW-6SSLK & UW-6SSLDK

COMMON PARTS			
004-007-3	HAMMER CASING ASSY		1
37	004-028-2	Hammer Casing	1 ►
38	004-328-1	Anvil Bushing	1 ►
39	945-962-0	Hexagon Head Bolt (M6X6)	1 ►
41	993-032-0	Felt Ring (12X17X2)	1

Index Number	Part Number	Description	Qty.
42	004-285-7	Rear Plate	1
43	004-286-7	Cylinder	1
44	004-287-1	Rotor	1
45	004-288-1	Blade	6
46	004-289-7	Front Plate	1
47	004-027-1	Separator	1
48	010-310-1	Anvil Rear Spacer	1
49	004-311-1	Hammer Cam	1
50	004-312-1	Hammer Cage	1
51	004-313-1	Hammer	2
52	004-317-1	Hammer Pin	2
53	004-326-1	Hammer Cage Bushing	1
54	010-327-1	Anvil Front Spacer	1
55	004-856-1	Separator Packing	1
56	004-857-1	Front Packing	1
57	945-118-0	Allen Head Bolt (MSX18)	3
58	973-006-0	Roll Pin (2X6)	1 ►
60	973-074-0	Roll Pin (2.5X14)	2
61	982-402-0	Ball Bearing (EE-3)	2

PARTS FOR UW-6SLK, 6SLRK, 6SSLK, 6SSLRK			
66	131-319-1	Anvil (P)	1
67	135-800-2	Socket Retainer Pin (P-F)	1
68	971-250-0	Pin (3.3X2)	1
69	976-018-0	Spring (2.8X8.5)	1

PARTS FOR UW-6SLDK, 6SLRDK, 6SSLDK, 6SSLRDK (SLEEVE TYPE)			
71	005-350-1	Driver Anvil (1/8)	1
72	011-351-1	Bit Sleeve (1/8)	1
73	011-352-1	Bit Spacer	1
74	976-327-0	Spring (13.5X11)	1
75	978-117-0	Snap Ring (11.7X1.0)	1
76	981-002-0	Ball (1/8)	1

AIMCO also offers a complete line of standard & special adapters, bits, sockets and extensions.



10000 SE Pine Street  
Portland, OR 97216  
503-254-6600  
FAX 503-255-2615

When ordering spare parts, please specify tool type, part number and description.