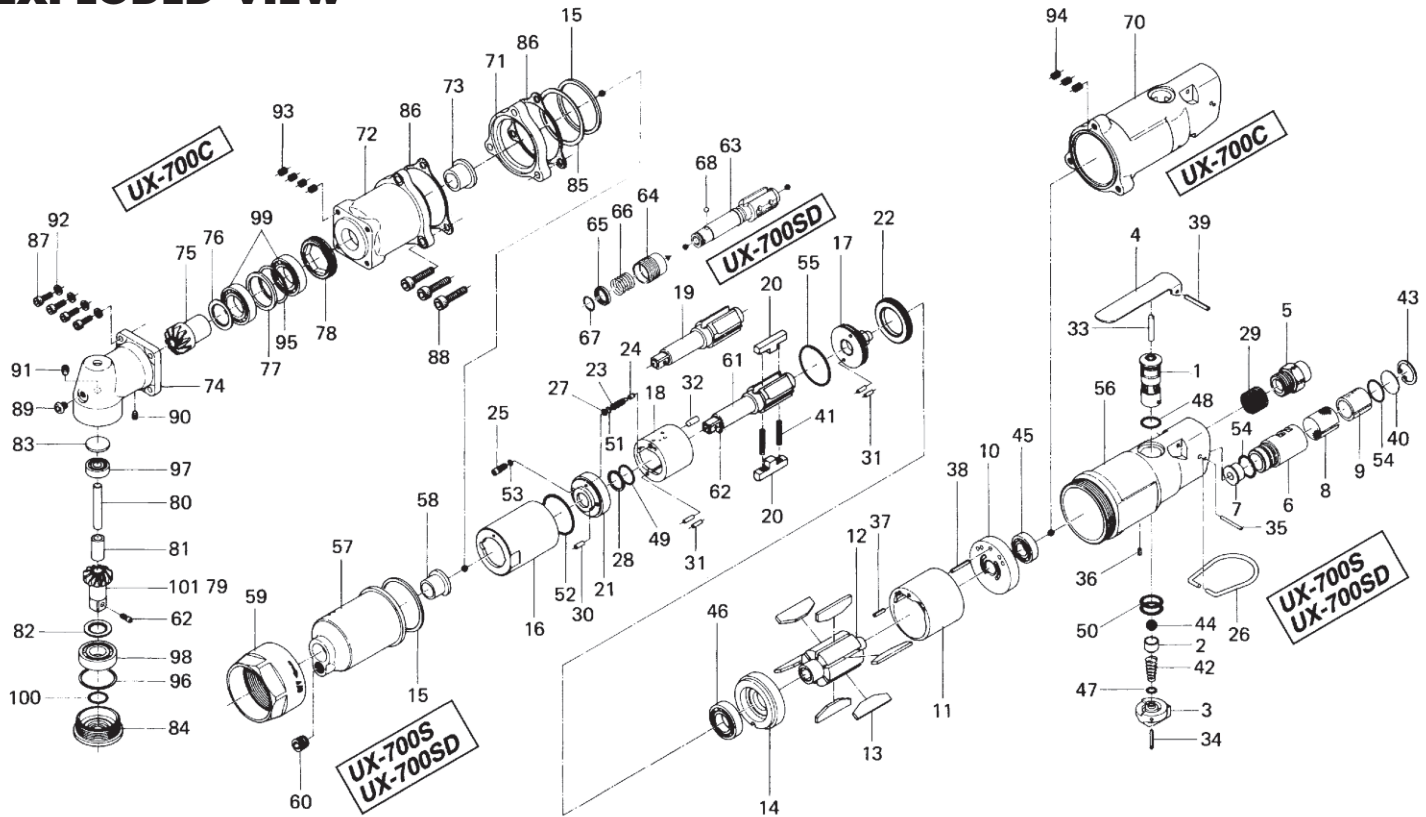


# UX-700S, 700SD, 700C OIL-PULSE TOOLS

## EXPLODED VIEW



## PARTS LIST — FOR REFERENCE ONLY

Index Number	Part Number	Description	Qty.	Index Number	Part Number	Description	Qty.	Index Number	Part Number	Description	Qty.
1	180-210-6	Reverse Valve	1	39	973-124-0	Roll Pin (3 x 24)	1	75	179-420-5	Driving Gear	1
2	186-100-1	Valve	1	40	975-598-0	Round Plate (18 x 1)	1	76	179-425-6	Driving Gear Spacer	1
3	020-212-1	Reverse Lever	1	41	976-793-0	Spring (3.7 x 29) (0.5) WPC	2	77	179-423-5	Driving Gear Bushing Spacer	1
4	500-107-1	Valve Lever	1	42	977-103-0	Cone Spring (6 x 9.5 x 16)	1	78	179-422-5	Driven Gear Bushing Screw	1
5	180-091-6	Air Inlet Bushing	1	43	979-318-0	Inner Snap Ring (IRTW-18)	1	79	179-430-5	Driven Gear (0)	1
6	194-780-4	Exhaust Stack	1	44	981-208-0	Ball (5/16)	1	80	179-431-5	Driven Gear Spindle	1
7	190-781-6	Exhaust Stack Bushing	1	45	982-402-0	Ball Bearing (EE-3)	1	81	179-432-5	Driven Gear Spindle Collar	1
8	194-042-4	Silencer	1	46	982-903-0	Ball Bearing (6902)	1	82	014-433-1	Driven Gear Spacer	1
9	611-780-7	Filter	1	47	990-322-0	O-Ring (ARP-568-107)	1	83	179-391-5	Spindle Rear Cover	1
10	180-285-4	Rear Plate	1	48	990-009-0	O-Ring (P10A)	1	84	179-488-5	Angle Head Casing Cover	1
11	180-286-4	Cylinder	1	49	992-020-0	O-Ring (Q12) (INTN)	1	85	179-856-5	Separator Packing	1
12	194-287-0	Rotor	1	50	990-015-0	O-Ring (P15)	2	86	179-867-5	Front Case Packing	2
13	174-288-4	Blade (GK)	6	51	990-320-0	O-Ring (ARP-568-003)	1	87	945-012-0	Allen Head Bolt (M4 x 12)	4
14	180-289-4	Front Plate	1	52	990-334-0	O-Ring (JW1530-24)	1	88	945-125-0	Allen Head Bolt (M5 x 25)	3
15	180-296-4	Rear Plate Spacer	1	53	990-900-0	O-Ring (SNS-2)	1	89	945-949-0	Hexagon Round Head Bolt (M5 x 6)	1
16	194-905-0	Liner Casing	1	54	990-914-0	O-Ring (SNS-16)	2	90	945-105-0	Allen Head Cone Point Screw (M4 x 5)	1
17	194-901-0	Rear Liner Plate	1	55	990-923-0	O-Ring (SNS-26)	1	91	954-206-0	Allen Head Cone Point Screw (M5 x 6)	1
18	194-902-1	Liner	1	19	194-319-0	Anvil (0)	1	92	962-070-0	Spring Washer (4.5 x 6.7 x 1.1)	4
20	194-440-0	Driving Blade	2	56	180-025-4	Handle	1	93	965-006-0	Heli-Sert (M4 x 1.5D)	4
21	194-904-0	Front Liner Plate	1	57	180-439-4	Front Case	1	94	965-011-0	Heli-Sert (M5 x 1.5D)	3
22	194-906-0	Liner Casing Cover	1	58	190-328-6	Anvil Bushing	1	95	975-803-0	Adjusting Spacer (30 x 26 x T)	1
23	194-907-0	Relief Valve Spindle	1	59	180-081-4	Front Case Nut	1	96	975-807-0	Adjusting Spacer (28 x 25 x T)	1
24	194-970-1	Relief Valve	1	60	966-100-0	Allen Head Plug (PT1/8)	1	97	982-013-0	Ball Bearing (606)	1
25	194-742-0	Oil Plug	1	61	891-309-1	Anvil (OP-P)	1	98	982-101-0	Ball Bearing (6001)	1
26	010-790-1	Suspension Ring	1	62	891-300-1	Socket Retainer Pin Assembly	1	99	982-904-0	Ball Bearing (6903)	2
27	944-002-0	Supporter Ring (26 x 4.5 x 1)	1	63	195-350-1	Driver Anvil	1	100	990-910-0	O-Ring (SNS-12.5)	2
28	944-213-0	Supporter Ring (12 x 15.9 x 1)	1	64	011-351-1	Bit Sleeve	1	101	891-348-1	Driven Gear (P)	1
29	965-073-0	Heli-Sert (UNF5/8 x N6)	1	65	011-352-1	Bit Spacer	1	62	891-300-1	Socket Retainer Pin Assembly	1
30	969-449-0	Pin (G) (3 x 6)	1	66	976-327-0	Spring (13.5 x 11)	1				
31	970-204-0	Pin (H) (3 x 6)	4	67	978-117-0	Snap Ring (11.7 x 1.0)	1				
32	970-310-0	Pin (H) (4 x 10)	1	68	981-002-0	Ball (1/8)	1				
33	970-327-0	Pin (H) (4 x 26)	1	19	194-319-0	Anvil (0)	1				
34	973-022-0	Roll Pin (2 x 22)	1	70	179-025-5	Handle	1				
35	971-163-0	Roll Pin (2.5 x 23)	1	71	179-027-5	Separator	1				
36	973-005-0	Roll Pin (2 x 5)	1	72	179-439-5	Front Casing	1				
37	973-112-0	Roll Pin (3 x 12)	1	73	185-328-2	Anvil Bushing	1				
38	973-122-0	Roll Pin (3 x 22)	1	74	179-441-5	Angle Head Casing	1				

### ACCESSORIES

939-104-0	Allen Wrench (5mm) for UX-700S Series	1
939-105-0	Allen Wrench (4mm) for UX-700C	1
939-091-0	Allen Wrench (1.5mm) (80 x 20)	1

### FOOTNOTES

- = Parts for UX-700S
- ✱ = Parts for UX-700C
- ▲ = Parts for UX-700SD

AIMCO also offers a complete line of standard & special adapters, bits, sockets and extensions.



10000 SE PINE,  
PORTLAND, OR 97216  
503-254-6600  
FAX 503-255-2615

When ordering spare parts, please specify  
tool type, part number and description.