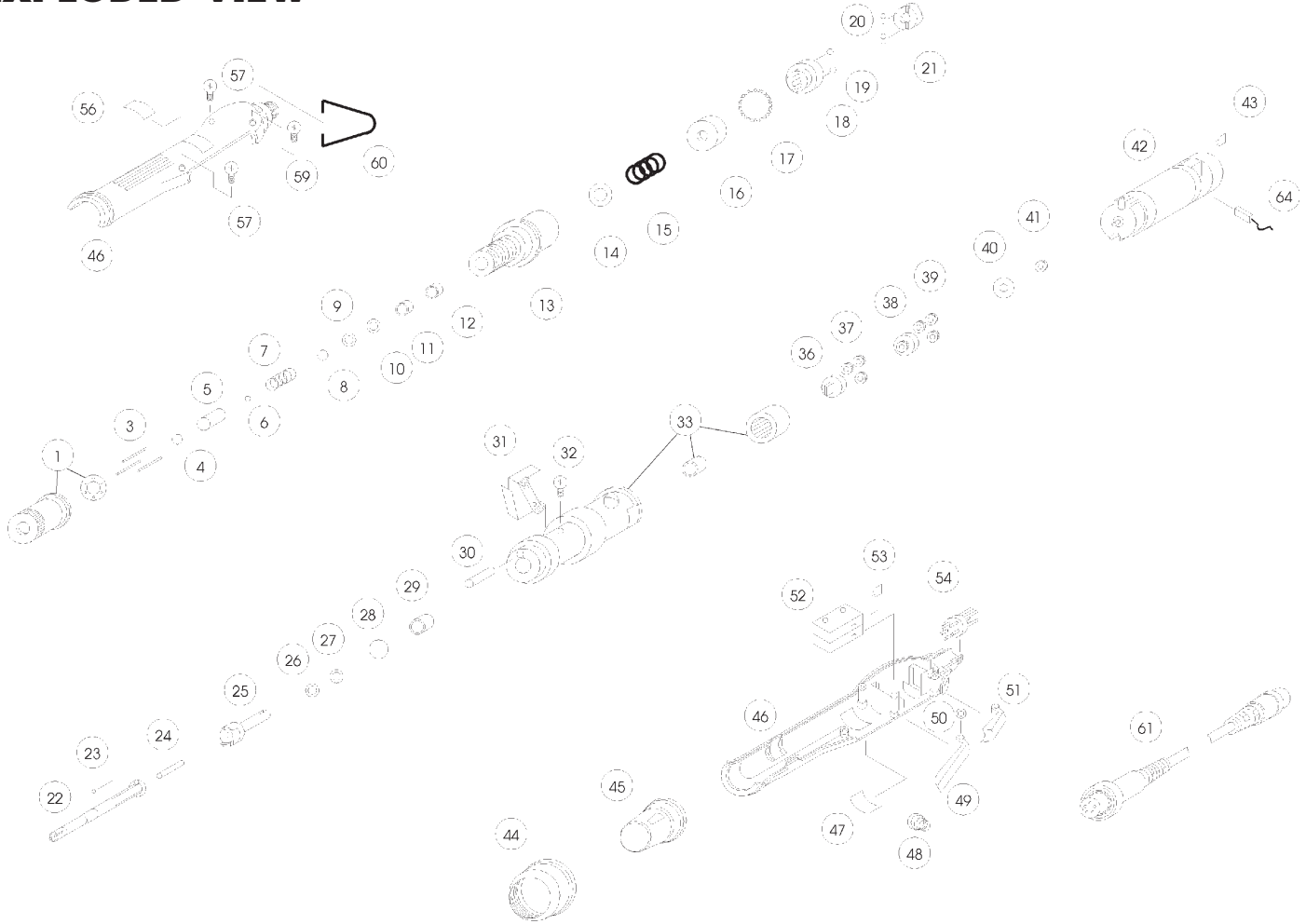


AE-4510 SCREWDRIVER

(FOR MODELS WITH SERIAL NO. BELOW 4W6614)

EXPLODED VIEW



PARTS LIST — FOR REFERENCE ONLY

Index Number	Part Number	Description	Qty.	Index Number	Part Number	Description	Qty.	Index Number	Part Number	Description	Qty.
1	4A4016	Torque Adjustment/Washer Sub Assembly	1	22	4C1081	Tool Bit Holder	1	44	4H1081	Retaining Ring	1
3	4N1026	Torque Adjustment Pin	3	22-1	4C1091	Sub Anvil (Not Shown)	1	45	6H1021	Engraving Ring	1
4	4U1051	C-Ring	1	23	4B1016	Ball Bearing	6	46	6A1015	Housing Set With Bonnets	1
5	4H2042	Sleeve	1	24	4N2021	Pin	1	47	6C1055	Carbon Maintenance Bonnet (Left)	1
6	4B2015	Ball Bearing	1	25	4K1022	Top Clutch	1	48	4S3051	Fwd. Spring	1
7	4S3062	Sleeve Spring	1	26	4W6011	Washer	1	49	6P1011	Fwd. Trigger	1
8	4U1051	C-ring	1	27	4W6011	Washer	1	50	4W1111	Washer	1
9	4W6011	Washer	1	28	4B1042	Ball Bearing	14	51	6P2011	Rev. Trigger	1
10	4W6011	Washer	1	29	4E1021	Bearing	1	52	2S3012	Micro Switch	1
11	4E1021	Bearing	1	30	4N1031	Pin	1	52-1	2R1014	Resistor (Not Shown)	1
12	4E1021	Bearing	1	31	2A7014	Micro Switch Sub. Assembly	1	52-2	2A6013	Micro Switch Sub. Assembly (Not Shown)	1
13	4T1062	Front Housing	1	32	8T1184	Screw	1	53	2C4011	Condenser (0.1K 100V)	1
14	4W3211	Washer	1	33	4A7014	Clutch Housing Sub Assembly	1	54	2G1023	5P Socket	1
15	4S1081	Torque Spring	1	36	4L2042	Bottom Gear Plate	1	56	6C2055	Carbon Maintenance Bonnet (Right)	1
16	4E2031	Thrust Bearing	1	37	4G2031	Pinion Gear (1OT)	3	57	8T1624	Screw	1
17	4B1044	Ball Bearing	23	38	4L1041	Top Gear Plate	1	59	8T1663	Screw	1
18	4K3021	Bottom Clutch	1	39	4G2031	Pinion Gear (1OT)	3	60	4F1012	Hanger Ring	1
19	4B1019	Ball Bearing	2	40	4W6012	Washer	1	61	2W2022	5P-5P Connector Wire	1
20	4B3013	Ball Bearing	2	41	4G1041	Main Gear (9T)	1	64	2B1012	Brush	2
21	4K2025	Mid Clutch	1	42	2M2041	D.C. Motor (5Q2765 19088)	1				
				43	2C4011	Condenser (0.1K 100V)	1				

FOOTNOTES



When ordering spare parts, please specify tool type, part number and description.

10000 SE PINE, PORTLAND, OR 97216
503-254-6600 FAX 503-255-2615