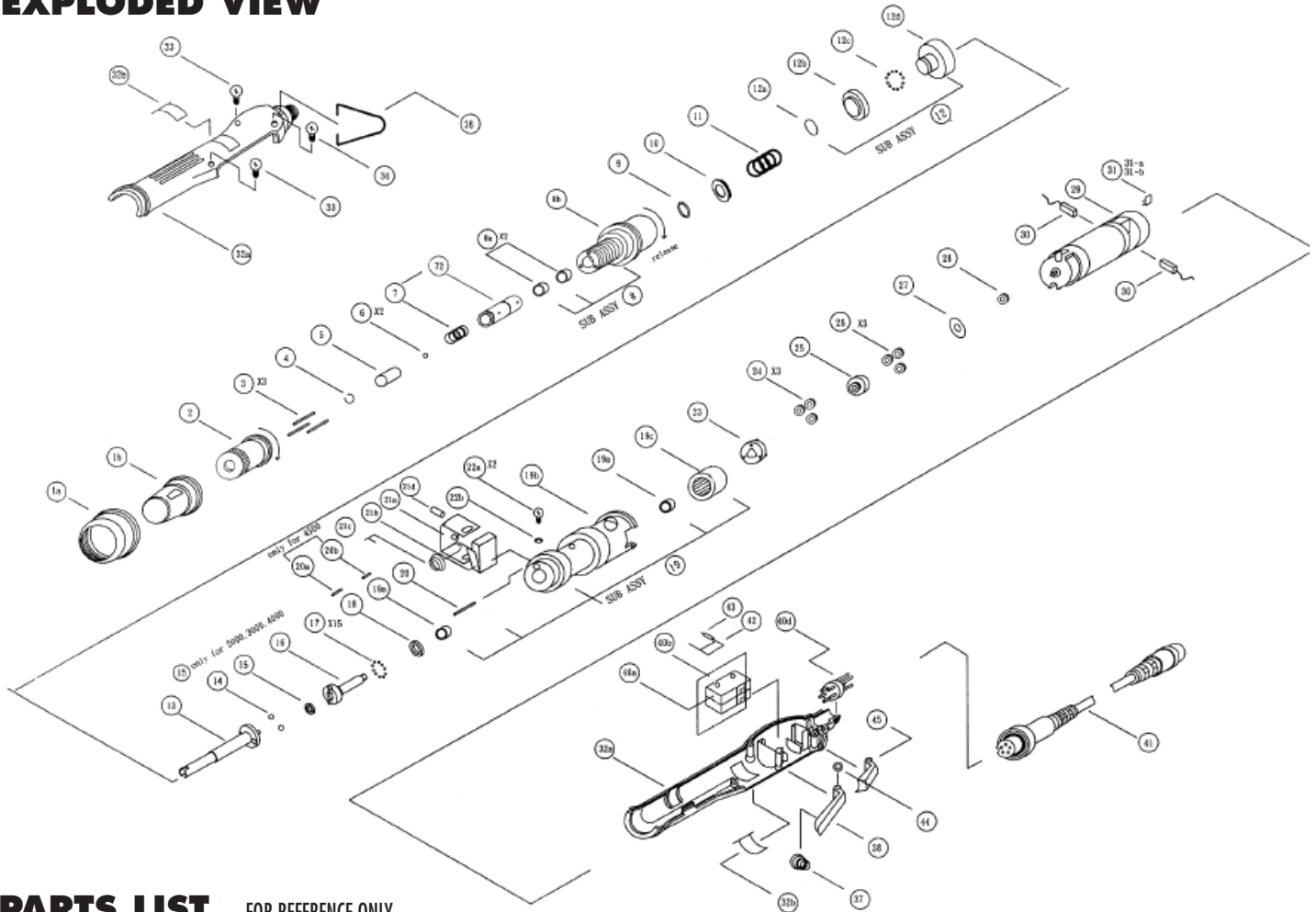


AE-4510 SCREWDRIVER

(FOR MODELS WITH SERIAL NO. 4W6614 AND UP)

EXPLODED VIEW



PARTS LIST — FOR REFERENCE ONLY

Index Number	Part Number	Description	Qty.	Index Number	Part Number	Description	Qty.	Index Number	Part Number	Description	Qty.
1	6H1053	Retaining Ring	1	19	4A7029	Gear Housing Sub Ass'y	1	32-a	641015	Plastic Housing	1
	6H1055	Retaining Ring (ESD)	1	19-a	4E1021	Ball Bearing (ø9xø6.35x3.17T)	2	32-b	6C5023	Carbon Maintenance Bonnet Set	1
2	4J1081	Regulating Handle	1	19-b	4R1074	Gear Housing	1	32	6A1035	Plastic Housing (L+R ESD Black w/ Carbon Maintenance Bonnet Set)	1
3	4N1026	Push Pin (L=18.8mm)	3	19-c	4X1055	Internal Gear (T=30T)	1	32-a	6Z1225	Black Plastic Housing (ESD)	1
4	4U1052	Snap Ring (ø1xø6)	1	20	4N1143	Roller Pin (ø2.0x12.8mm)	1	32-b	6C5025	Carbon Maintenance Bonnet Set (ESD)	1
5	4H2081	Bit Slide Sleeve (ø10xø7x 11mm)	1	20-a	4N1145	Roller Pin (ø2.0x5.8mm)	1	33	8T1663	Screw (M2.6x6mm)	2
6	4B1024	Ball (ø2)	2	20-b	4N1146	Roller Pin (ø2.0x6.8mm)	1	34	8T2624	Screw (M2.6x5mm)	1
7	4S3074	Sleeve Spring (1/4")	1	21	2A7016	Micro Switch Sub Ass'y	1	35	4F1023	Hanger Ring (ø1.0xø12.0x2T)	1
8	4A1025	Hammer Casing Sub Ass'y	1	21-a	4V1032	Fixing Plate	1	36	4F1012	Hanger Ring	1
8-a	4E1022	Ball Bearing (ø7xø11x 3T)	2	21-b	2S3011	Micro SW. Only (10GL)	1	37	4S3052	Fwd. Spring	1
8-b	4T1035	Hammer Casing (ø7.00)	1	21-c	4S3043	Recoil Spring (ø0.35mm)	1	38	6P4011	Fwd. Trigger (Black)	1
9	4W6015	Washer (ø10.9xø7x 0.2T)	1	21-d	4N4015	Spring Cotter (ø2.0x8mm)	1	6P4015	Fwd. Trigger (ESD Black)	1	
10	4W6411	Washer (ø15xø11x 2.4T)	1	22-a	8T4046	Screw (M2.6x6mm)	2	6P4021	Rev. Trigger (Black)	1	
11	4S1112	Spring (ø1.6 For #AE-4510)	1	22-b	4W1712	Washer (Start Washer)	2	39	6P4025	Rev. Trigger (ESD Black)	1
12	4A5025	Retainer Sub Ass'y	1	23	4L2851	Second Gear Cage	1	40	2A6039A	PWB Sub Ass'y	1
12-a	4U1037	Snap Ring (ø0.8mm)	1	24	4G2654	Second Planet Gear (10T)	3	40-b	2S3012	Micro Switch (SS-10)	1
12-b	4E6011	Washer	1	25	4L1654	First Gear Cage (C/W Center Gear)	1	40-c	2S1021	Micro Switch (V-12-1E5)	1
12-c	4B1024	Ball (ø2.0)	15	26	4G2654	First Planet Gear (10T)	3	40-d	2G1023	5P Socket	1
12-d	4K6012	Driven Clutch	1	27	4W6012	Washer (ø4.5xø9x 10.2)	1	41	2W2022	5P-5P Connector Wire (2.4m)	1
13	4C1025	Anvil (O.D. 7.00)	1	28	4G1652	Driving Gear (9T)	1	42	4C1191	Bit Holder (1/4")	1
14	4B1029	Ball (ø4.0)	2	29	2M2061	Motor (7Q2765-21020)	1	43	4N4012	Spring Cotter (ø2.0x9.8mm)	1
16	4K2048	Hammer (High 1.95mm)	1	30	2B1018	Brush (Pair)	2				
17	4B1024	Ball (ø 2.0)	15	31-a	2R2014	Resistor (100W)	1				
18	4E7011	Retainer (ø15xø7x T2.80)	1	31-b	2C6616	Capacitor (104J 100V)	1				

NOTES

AIMCO also offers a complete line of standard & special adapters, bits, sockets and extensions.



**10000 SE PINE,
PORTLAND, OR 97216
503-254-6600
FAX 503-255-2615**

When ordering spare parts, please specify tool type, part number and description.