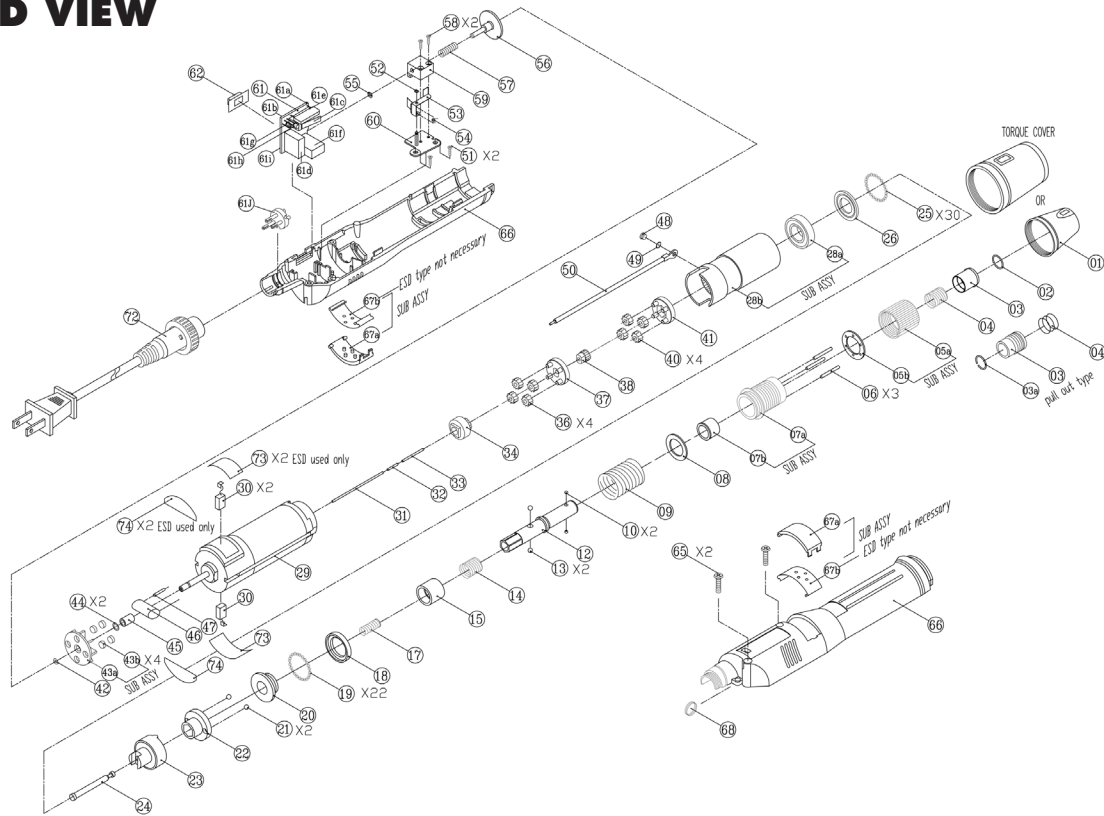


# AE-5681, AE-5681ESD ELECTRA SCREWDRIVERS

## EXPLODED VIEW



## PARTS LIST — FOR REFERENCE ONLY

Index Number	Part Number	Description	Qty.	Index Number	Part Number	Description	Qty.	Index Number	Part Number	Description	Qty.
1	6H1046	Retaining Ring	1	28B	4X1046	Gear Housing	1	54	4S3101	Support Ring	1
1	6H1047	Torque Cover	1	29	2M5043	Motor AC110 V (for AE-5681/ESD)	1	55	4U1061	Snap Ring 0.5 x 2.5	1
1	6H1048	Retaining Ring (for ESD Model)	1	29	2M5047	Motor 24N2975-09080-40Y (for 230 V)	1	56	4K4011	Braking Disk	1
1	6H1049	Torque Cover (for ESD Model)	1	30	2B1014	Brush (pair)	1	57	4S2027	Spring 0.45	1
2	4U1051	Snap Ring	1	31	4N4026	Guide Pin A 1.5 x L=89	1	58	8T3326	Screw 2.0 x L=10	2
3	4H2048	Bit Slide Sleeve	1	32	4N4032	Guide Pin B 1.5 x L=10	1	59	4V1026	Slide Base	1
3A	4U1051	Snap Ring 1.0	1	33	4N1126	Guide Pin C 2.0 x L=18.8	1	60	4V1123	Fixing Plate	1
4	4S3065	Sleeve Spring 0.6	1	34	6G9012	Connect Gear 14T (for AE-5681/ESD)	1	61	2A6031a	Pwb Sub Ass'y Inc. 061A ~ 061J	1
5	4A4022	Regulating Handle Sub Assembly	1	36	4G2685	First Planet Gear 14T (For AE-5681/ESD)	4	61A	2H1074	Circuit Board	1
5A	4J1066	Regulating Handle	1	37	4L1812	First Gear Cage (For AE-5681/ESD)	1	61B	2S2019	3 Band Switch	1
5B	4W4712	Washer	1	38	4G1611	Gear, 14T	1	61C	2S3011	Micro Switch	1
6	4N1026	Push Pin 2.0 x 18.8	3	39	4W3012	Washer	1	61D	2E1036	Bridge Rectifier	1
7	4A1019	Hammer Case Sub Assembly	1	40	4G2611	Second Planet Gear, 14T	4	61E	2C6821	Capacitor	1
7A	4T1076	Hammer Casing	1	41	4L2821	Second Gear Cage	1	61F	2F3015	Protector	1
7B	4Q1064	Spindle Bushing	1	42	4U1068	Snap Ring	1	61G	2D4017	Silicon Rectifier	1
8	4W4214	Washer	1	43	6A3011	Fan Sub Assembly	1	61H	2N1012	LED	1
9	4S1035	Spring 2.2	1	43A	2R2014	Fan	1	61I	2R8416	Resistor 10K/2W	1
10	4B2015	Ball 2.38 (1/4")	1	43B	2V1016	Magnet	4	61J	2G1016	3P Plug	1
12	4C1158	Anvil 1/4"	1	44	6W1013	Plastic Washer T=0.5	2	66	6Z1161	Housing	1
13	4B1029	Ball 4.0	2	44	6W1014	Plastic Washer T=0.25	1	67	6A2014	Carbon Maintenance Bonnet Sub Assembly	2
14	4S3066	Spring 0.7	1	45	4Q1073	Anvil Bushing	1	67A	6C4011	Carbon Maintenance Bonnet	2
15	4K3058	Slide Sleeve L=9.4	1	46	2C6821	Capacitor 1K 400V	1	67B	4S5012	Spring Connector (not needed on ESD)	2
16	4W3311	Washer	1	47	2R2014	Resistor 100	1	67B	6C4010	Carbon Maintenance Bonnet (ESD)	2
17	4S2025	Spring 0.5	1	48	8F1623	Screw 2.0 x 5	1	68	4F1023	Hanger Ring	1
18	4E2013	Retainer	1	49	4W1611	Washer	1	69	7L1351-0	Model Label	1
19	4B1024	Ball 2.0	22	50	2L9231	Ground Wire	1	70	7L3018	Caution Label	1
20	4K3046	Driven Clutch	1	51	8T2685	Screw 3.0 x 8 PTS	2	71	7L3021	Caution Label (ESD)	1
21	4B1028	Ball 3.175	2	52	6W1012	Plastic Washer	1	72	2W1020	AC Cord	1
22	4K2032	Hammer	1	52A	4A6012	Braking Disk Sub Ass'y Inc. 51 ~ 60	(1)	73	6W1212	Insulated Sheet 50 x 13 x 0.25 (ESD)	2
23	4K1067	Hammer Shank	1	53	4S5016	Spring Plate	1	74	6W1213	Insulated Sheet 20 x 6 x 0.25 (ESD)	2
24	4C2042	Slide Pin	1								
25	4B1024	Ball 2.0	29								
26	4W3215	Washer	1								
27	4W6311	Washer	1								
28	4A7019	Gear Housing Sub Assembly	1								
28A	4E1019	Ball Bearing, 6901ZZ	1								

## FOOTNOTES



10000 SE PINE  
PORTLAND, OR 97216  
503-254-6600  
FAX 503-255-2615

When ordering spare parts, please specify  
tool type, part number, and description.