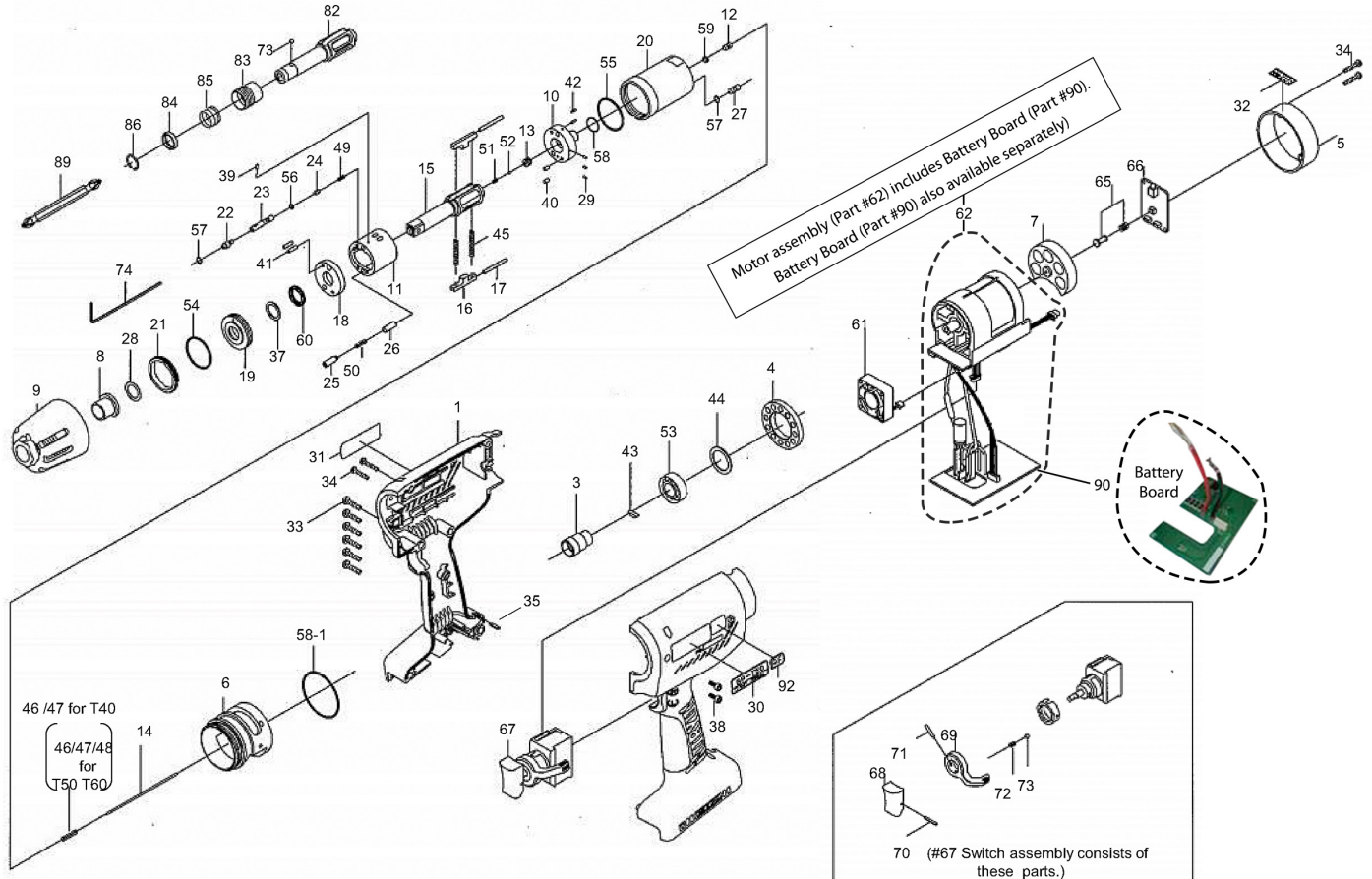


BP-T SERIES BATTERY OIL-PULSE TOOLS

EXPLODED VIEW



PARTS LIST — FOR REFERENCE ONLY

Index #	Part #	Description	Qty.	Index #	Part #	Description	Qty.	Index #	Part #	Description	Qty.	Index #	Part #	Description	Qty.
COMMON PARTS FOR BP-T40, T40D, T50, T50D, T60 & T60D								COMMON PARTS FOR BP-T50, T50D, T60 & T60D							
3	10E-079-1	Connector	1	40	970-130-0	Pin (H) (2.45 x 4.5)	2	16	145-440-0	Driving Blade	2	10	10E-901-1	Rear Liner Plate	1
4	10E-065-1	Handle Front Cover	1	41	970-131-0	Pin (H) (2.45 x 9.5)	2	17	145-974-0	Roller Pin (2.5 x 21)	2	11	10E-902-1	Liner	1
5	10E-012-1	Handle Cover	1	42	973-040-0	Roll Pin (1.5 x 5)	2	20	10C-905-1	Liner Casing	1	16	145-440-6	Driving Blade	2
6	10E-036-1	Hammer Casing Connector	1	43	974-952-0	Woodruff Key 3 x 12 (3)	1	45	976-791-0	Spring (3.3 x 21) WPC	2	17	145-974-6	Roller Pin (2.5 x 26)	2
8	190-328-6	Anvil Bushing	1	44	975-798-0	Adjusting Spacer 24 x 18 x 1	1	50	976-777-0	Spring (3.0 x 13.5)	1	20	10E-905-1	Liner Casing	1
12	145-546-6	Piston	1	46	976-989-0	Spring (3.3 x 17.5) (Standard)	1	COMMON PARTS FOR BP-T40 & T50				23	094-970-4	Relief Valve	1
13	145-929-6	Check Valve Cover	1	47	976-662-0	Spring (3.3 x 18) (Weak)	1	48	976-985-0	Spring (3.3 x 18) (Strong)	1	25	080-276-6	Pressure Valve Body	1
14	10E-130-1	Operating Rod (1.4 x 81.5)	1	52	981-001-0	Ball (3/32)	1	51	976-847-0	Spring (2.4 x 5.3)	1	45	976-805-0	Spring (3.5 x 25.2) WPC	1
18	18C-973-8	Liner Casing Spacer	1	53	982-902-0	Ball Bearing (6901)	1	COMMON PARTS FOR BP-T40D & T50D				49	976-883-0	Spring (2.8 x 7.6)	1
19	18E-904-1	Front Liner Plate	1	54	990-329-0	O-Ring (JW1 530-19)	1	82	145-350-2	Driver Anvil	1	50	976-999-0	Spring (3 x 12)	1
21	10E-906-1	Liner Casing Cover	1	55	990-605-0	O-Ring (25 x 1.45)	1	COMMON PARTS FOR BP-T40 & T40D				73	981-002-0	Ball (1/8)	1
22	145-907-6	Relief Valve Spindle	1	56	990-621-0	O-Ring (3.8 x 1.8 x 1.0)	1	23	092-970-8	Relief Valve	1	83	011-351-1	Bit Sleeve	1
24	144-270-0	Pressure Regulator Valve	1	57	990-900-0	O-Ring (SNS-2)	2	25	17C-276-4	Pressure Valve Body	1	84	011-352-1	Bit Spacer	1
26	080-274-6	Pressure Valve Spring Collar	1	58	990-906-0	O-Ring (SNS-8)	1	49	976-756-0	Spring (2.8 x 6.9)	1	85	976-327-0	Spring (13.5 x 11)	1
27	194-742-0	Oil Plug	1	58-1	990-933-0	O-Ring (SNS-39)	1	51	976-653-0	Spring (2.4 x 5.3)	1	86	978-117-0	Snap Ring (11.7 x 1.0)	1
28	145-327-7	Anvil Front Spacer	1	59	991-025-0	X-Ring (4.7 x 2.2 x 1.25)	1	62	911-030-0	Motor Assembly (incl. #90)	1	ACCESSORIES			
29	150-064-5	Plug	3	60	991-030-0	X-Ring (X12)	1	90	863-899-1	Battery Board (board only)	1	74	939-091-0	Allen Wrench (1.5 (80 x 20)	1
30	10A-924-1	Name Plate for BP-T40	1	61	911-033-0	Fan Assembly	1	90	863-899-1	Battery Board (board only)	1	89	916-810-0	Double Bit (No.2 x 75) for Drivers	1
	10A-924-0	Name Plate for BP-T40D	1	65	861-173-1	Slide Base Assembly	1	COMMON PARTS FOR BP-T50 & T50D							
	10C-924-1	Name Plate for BP-T50	1	66	863-972-1	Control Board and LED	1	23	093-970-8	Relief Valve	1				
	10C-924-0	Name Plate for BP-T50D	1	67	098-174-4	Switch Assembly	1	25	078-276-7	Pressure Valve Body	1				
	10E-924-1	Name Plate for BP-T60	1	68	147-107-2	Valve Lever	1	49	976-826-0	Spring (2.9 x 7.6)	1				
	10E-924-0	Name Plate for BP-T60D	1	69	098-212-5	Reverse Lever	1	62	911-030-0	Motor Assembly (incl. #90)	1				
31	094-997-4	Plate (Address & Others)	1	70	973-014-0	Roll Pin (2 x 14)	1	62	911-030-0	Motor Assembly (incl. #90)	1				
32	094-996-4	Plate (Warning)	1	71	973-018-0	Roll Pin (2 x 18)	1	90	863-899-1	Battery Board (board only)	1				
33	963-253-0	Tapping Screw (3 x 16)	6	72	976-006-0	Spring (3 x 5)	1	COMMON PARTS FOR BP-T60 & T60D							
34	861-181-1	Tapping Screw	4	73	981-002-0	Ball (1/8)	1	9	10E-439-1	Front Casing	1				
35	910-404-0	Battery Level Display Cover	1	COMMON PARTS FOR BP-T40, T40D, T50 & T50D											
37	944-213-0	Supporting Ring (12 x 16 x 1)	1	1	10C-025-1	Handle	1								
38	945-024-0	Allen Head Screw (M3 x 8)	2	7	10C-013-2	Handle Rear Cover	1								
39	970-013-0	Pin (H) (1.5 x 4)	1	9	10C-439-1	Front Casing	1								
				10	10C-901-1	Rear Liner Plate	1								
				11	10C-902-1	Liner	1								

FOOTNOTES

- = Items in Pulse Repair Kit T40(D)-PRK
- = Items in Pulse Repair Kit T50(D)-PRK
- ▲ = Items in Pulse Repair Kit T60(D)-PRK



10000 SE PINE
PORTLAND, OR 97216
503-254-6600
FAX 503-255-2615

When ordering spare parts, please specify tool type, part number, and description.