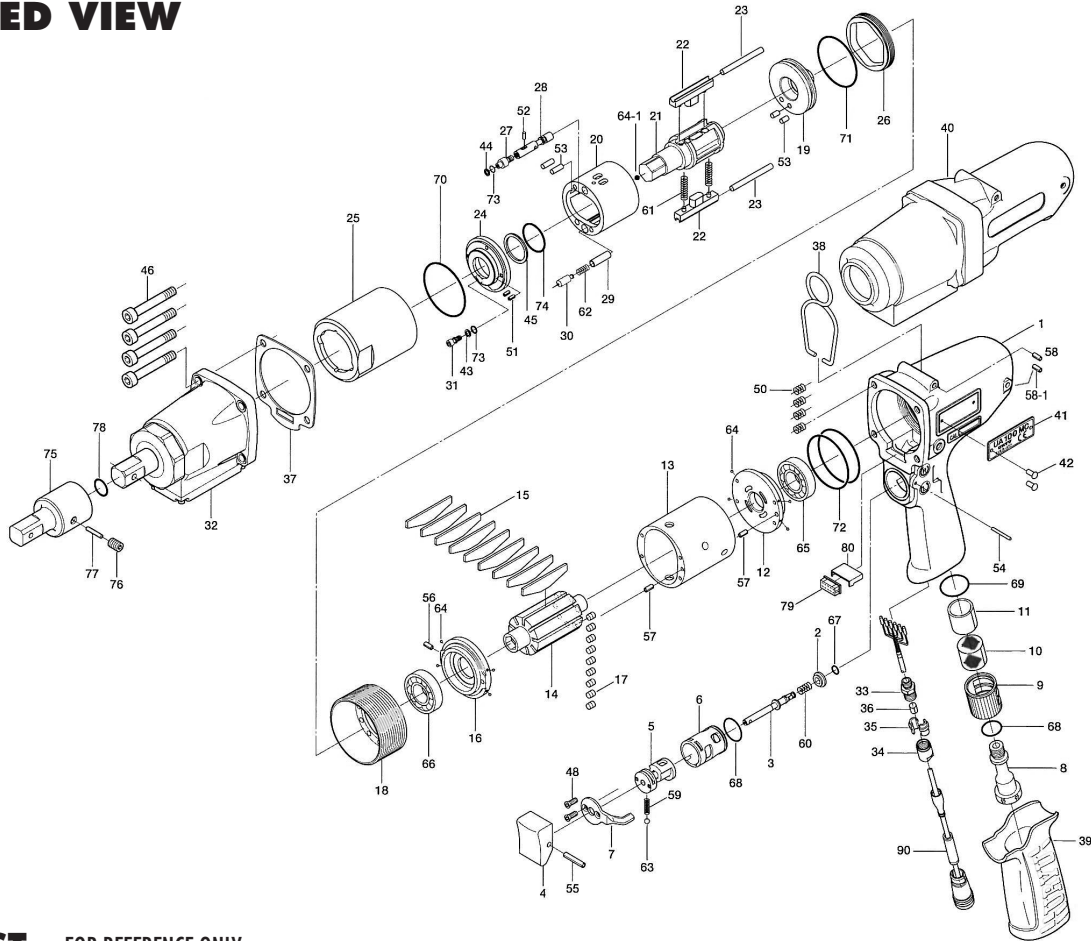


UA-100MC OIL-PULSE WRENCHES

EXPLODED VIEW



PARTS LIST — FOR REFERENCE ONLY

Index Number	Part Number	Description	Qty.	Index Number	Part Number	Description	Qty.	Index Number	Part Number	Description	Qty.
1	17F-025-3	Handle	1	30	18F-276-9	Pressure Adjusting Valve	1	60	976-643-0	Spring (7.5 x 9.7)	1
2	147-100-8	Valve	1	31	194-742-3	Oil Plug	1	61	976-783-0	Spring (4.3 x 36) WPC	2 ●
3	147-104-8	Valve Rod	1	32	851-692-1	Sensor Casing Assembly (S08S)	1	62	976-874-0	Spring (3.4 x 16.6)	1 ●
4	147-107-2	Valve Lever	1	33	851-301-1	Connector	1	63	981-002-0	Ball (1/8)	1
5	147-210-8	Reverse Valve	1	34	851-302-1	Cap	1	64	981-045-0	Ball (1.5)	9
6	147-211-8	Reverse Valve Bushing	1	35	851-303-1	Stopper	2	64-1	981-222-0	Ball (17/64)	1
7	147-212-8	Reverse Lever	1	36	131-395-8	Outer Ring	1	65	982-949-0	Ball Bearing (16001)	1
8	148-091-3	Air Inlet Bushing	1	37	131-867-9	Front Casing Packing	1	66	982-950-0	Ball Bearing (16002)	1
9	147-780-9	Exhaust Stack	1	38	143-790-3	Suspension Ring	1	67	990-306-0	O-Ring (APR-569-004)	1
10	147-042-8	Silencer	1	39	170-842-3	Handle Cover	1	68	990-914-0	O-Ring (SNS-16)	2
11	148-835-2	Filter (K-50)	1	40	17F-840-3	Handle Protector (Ro10)	1	69	990-919-0	O-Ring (SNS-22)	1
12	148-285-2	Rear Plate	1	41	17F-924-3	Metal Tag (UA100MC)	1	70	990-928-0	O-Ring (SNS-38)	1 ●
13	155-286-0	Cylinder	1	42	930-205-0	Driver Rivet	2	71	990-929-0	O-Ring (SNS-36)	1 ●
14	148-287-2	Rotor	1	43	944-003-0	Back-up Ring (3 x 5 x 1)	1 ●	72	990-938-0	O-Ring (SNS-48)	2
15	148-288-2	Blade	9	44	944-203-0	Back-up Ring (3.1 x 5 x 1)	1 ●	73	990-970-0	O-Ring (SNS-2)	2 ●
16	148-289-2	Front Plate	1	45	944-215-0	Back-up Ring (16 x 19.9 x 1.5)	1 ●	74	992-021-0	SU-Ring (Q16)	1 ●
17	148-064-2	Plug	9	46	945-117-0	Allen Head Bolt (M5 x 16)	4	75	904-190-0	Extension Bar (1/2 x 60)	1
18	148-036-2	Hammer Casing Connector	1	48	948-422-0	Allen Flush Head Screw (M3 x 5)	2	76	953-205-0	Allen Head Screw (M5 x 5)	1
19	17F-901-3	Rear Liner Plate	1	50	965-011-0	Heli-Sert (M5 x 1.5D)	4	77	971-220-0	Pin (3 x 20)	1
20	18F-902-8	Liner	1	51	969-450-0	Pin (G) (3 x 8)	2	78	990-016-0	O-Ring (P-16)	1
21	073-319-1	Anvil	1	52	970-091-0	Pin (H) (2 x 4.5)	1	79	909-918-0	Double-Row Socket	1
22	148-440-2	Driving Blade	2	53	970-205-0	Pin (H) (3 x 7)	4	80	911-017-0	Connector Cover	1
23	148-974-2	Roller Pin (3 x 35)	2	54	971-125-0	Pin (2 x 25)	1	90	911-061-0	Joint Cable Assembly	1
24	18F-904-8	Front Liner Plate	1	55	973-014-0	Roll Pin (2 x 14)	1	91	939-091-0	Allen Wrench (1.5)	1
25	148-905-2	Liner Casing	1	56	973-006-0	Roll Pin (2 x 6)	1	93	909-749-0	Solenoid Valve Assembly	1
26	148-906-2	Liner Casing Cover	1	57	973-068-0	Roll Pin (2.5 x 8)	2	94	910-263-0	Sensor Cable Assembly (3F5)	1
27	174-907-2	Relief Valve Spindle	1	58	973-308-0	Roll Pin (5 x 8)	2	95	910-633-0	Connector Cover	1
28	17F-970-3	Relief Valve	1	58-1	973-307-0	Roll Pin (5 x 6)	2				
29	18F-274-8	Spring Holder	1	59	976-006-0	Spring (3 x 5)	1				

FOOTNOTES

● = Items in Pulse Repair Kit UA-100MC-PRK



10000 SE PINE
PORTLAND, OR 97216
503-254-6600
FAX 503-255-2615

When ordering spare parts, please specify
tool type, part number, and description.