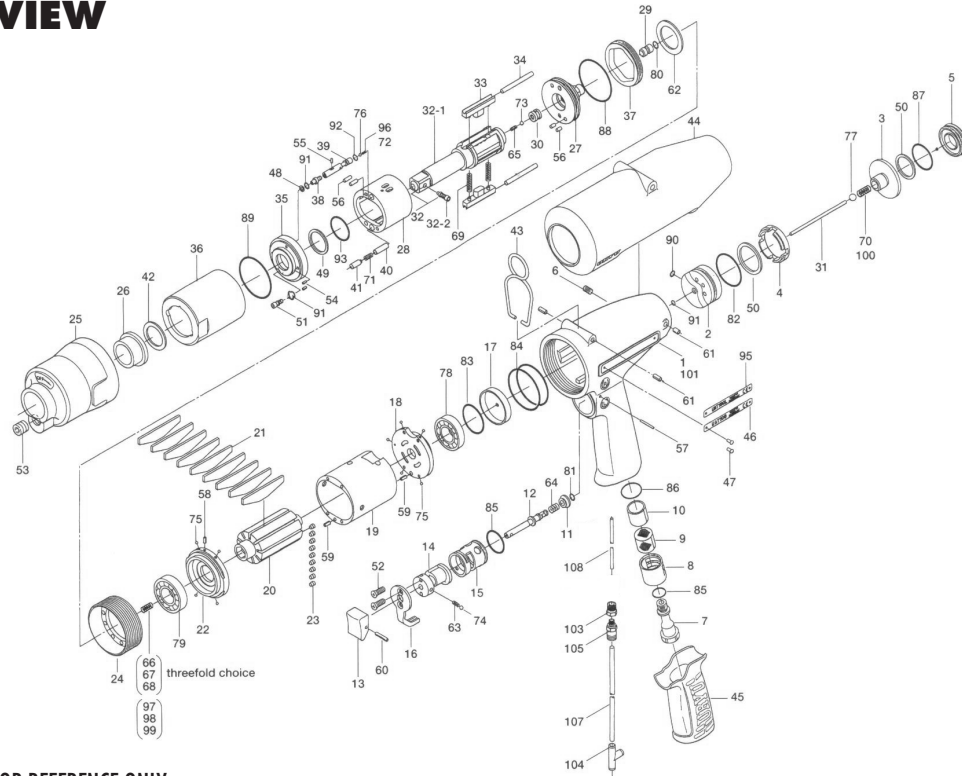


UAT-130 SERIES OIL-PULSE WRENCH

EXPLODED VIEW



PARTS LIST — FOR REFERENCE ONLY

Index Number	Part Number	Description	Qty.	Index Number	Part Number	Description	Qty.	Index Number	Part Number	Description	Qty.
1	130-025-3	Handle	1	40	17F-274-7	Pressure Valve Spring Cover	1	79	982-951-0	Ball Bearing (16003)	1 ●
2	130-253-2	Shut-off Valve Bushing	1	41	18G-276-1	Pressure Valve Body	1	80	990-305-0	O-Ring (APR568-003)	1 ■
3	130-254-2	Shut-off Valve	1	42	147-327-9	Anvil Front Spacer	1	81	990-306-0	O-Ring (APR568-004)	1
4	130-684-2	Cushion Spacer	1	43	174-790-0	Suspension Ring	1	82	990-332-0	O-Ring (JW1530-22)	1
5	130-019-2	Valve Cover	1	44	130-840-2	Casing Cover	1	83	990-337-0	O-Ring (JW1530-27)	1
6	150-108-5	Valve Plug	1	45	17F-842-7	Handle Cover	1	84	990-611-0	O-Ring (51.5 X 2)	2 ●
7	130-091-2	Air Inlet Bushing	1	46	18G-924-1	Name Plate	1	85	990-916-0	O-Ring (SNS-18)	2
8	130-780-2	Exhaust Stack	1	47	930-205-0	Driver Rivet (No. 0 x 2.6)	2	86	990-921-0	O-Ring (SNS-22.4)	1
9	130-042-2	Silencer	1	48	944-205-0	Back-up Ring (5.1 x 7 X 1)	1 ■	87	990-922-0	O-Ring (SNS-28)	1
10	130-835-3	Filter (K50)	1 ●	49	944-215-0	Back-up Ring (16 x 19.9 x 1.5)	1 ■	88	990-930-0	O-Ring (SNS-40)	1 ■
11	130-100-2	Valve	1	50	944-223-0	Back-up Ring (22 x 29.5 x 1.5)	2	89	990-932-0	O-Ring (SNS-42)	1 ■
12	130-104-2	Valve Rod	1	51	945-942-0	Allen Head Button Bolt (M4 x 6)	1	90	990-970-0	O-Ring (SNS-2)	1
13	130-107-2	Valve Lever	1	52	948-423-0	Allen Flush Head Screw (M3 x 6)	2	91	990-971-0	O-Ring (SNS-3)	3 ■
14	130-210-2	Reverse Valve	1	53	966-099-0	Allen Head Plug (NPT1/16)	1	92	990-972-0	O-Ring (SNS-4)	1 ■
15	130-211-2	Reverse Valve Bushing	1	54	969-450-0	Pin (G)(3 x 8)	2	93	992-021-0	SU Ring (Q16)	1 ■
16	130-212-2	Reverse Lever	1	55	970-092-0	Pin (H)(2 x 5.5)	1	PARTS FOR UAT130L			
17	130-291-3	Rear Plate Spacer	1	56	970-206-0	Pin (H)(3 x 8)	4	95	18G-924-2	Name Plate	1
18	130-285-2	Rear Plate	1	57	971-126-0	Pin (2 x 26)	1	96	977-034-0	Cone Spring (3 x 5 x 8.3) (0.55)	1
19	130-286-2	Cylinder	1	58	973-006-0	Roll Pin (2 x 6)	1	97	976-662-0	Spring (3.3 x 18) Standard (0.45)	1
20	130-287-2	Rotor	1	59	973-108-0	Roll Pin (3 x 8)	2	98	976-650-0	Standard Spring (3.3 x 16) (0.45) Weak	1
21	130-288-2	Blade	9 ●	60	973-120-0	Roll Pin (3 x 20)	1	99	976-985-0	Weak Spring (3.3 x 18) (0.45) n = 13.5 Strong	1
22	130-289-2	Front Plate	1	61	973-308-0	Roll Pin (5 x 8)	4	100	976-802-0	Spring (4.5 x 14)	1
23	148-064-2	Plug	9	62	975-790-0	Adjusting Spacer (22 x 15 x t)	1	PARTS FOR UAT130TM & 130L(TM)			
24	130-036-2	Hammer Casing Connector	1	63	976-006-0	Spring (3 x 5)	1	101	852-573-1	Handle	1
25	130-439-2	Front Casing	1	64	976-643-0	Spring (7.5 x 9.7)	1	103	1/16BK1-10F	Barb 10/32 x 1/16NPT x 1/16	1
26	147-328-8	Anvil Bushing	1	65	976-884-0	Spring (2.5 x 5.4) (0.3)	1 ■	104	909-442-0	Quick Exhaust (AQ240F-04)	1
27	18G-901-2	Rear Liner Plate	1	66	976-985-0	Spring (3.3 x 18) (0.45) n = 13.5 Strong	1	105	PQ-MCOSN	5/32 x 10/32 Fitting	1
28	17F-902-7	Liner	1	67	976-662-0	Spring (3.3 x 18) (0.45) Standard	1	107	935-350-0	Polyurethane Hose (F-1504)	1
29	145-546-6	Piston	1	68	976-650-0	Spring (3.3 x 16) (0.45) Weak	1	108	935-358-0	Polyurethane Hose (TU-0212)	1
30	145-929-6	Check Valve Cover	1	69	976-801-0	Spring (4.5 x 35.5)	2 ■	ACCESSORIES			
31	130-130-2	Operating Rod (2.1 x 7.3)	1	70	976-963-0	Spring (4.4 x 14.5)	1	110	939-109-0	Allen Wrench (2)	1
32	891-563-1	Anvil Assembly	1	71	976-827-0	Spring (4.3 x 21.5)	1	111	939-105-0	Allen Wrench (4)	1
32-1	130-319-3	Anvil	1	72	977-066-0	Cone Spring (4.2 x 5 x 8.1) n = 4.75	1 ■	113	130-107-4	Valve Lever (Option)	1
32-2	891-304-1	Socket Pin Assembly	1	73	981-001-0	Ball (3/32)	1	114	909-449-0	Speed Controller	1
33	130-440-2	Driving Blade	2	74	981-002-0	Ball (1/8)	1				
34	130-974-2	Roller (3 x 40)	2	75	981-045-0	Ball (1.5)	9				
35	17F-904-7	Front Liner Plate	1	76	981-155-0	Ball (3.5)	1				
36	130-905-2	Liner Casing	1	77	981-245-0	Ball (4.5)	1				
37	130-906-2	Liner Casing Cover	1	78	982-950-0	Ball Bearing (16002)	1 ●				
38	175-907-9	Relief Valve Spindle	1								
39	130-970-2	Relief Valve	1								



10000 SE PINE
PORTLAND, OR 97216
503-254-6600
FAX 503-255-2615

When ordering spare parts, please specify
tool type, part number, and description.

FOOTNOTES

- = Parts available in Repair Kit UAT-130-RK
- = Parts available in Pulse Unit Repair Kit UAT-130-PRK