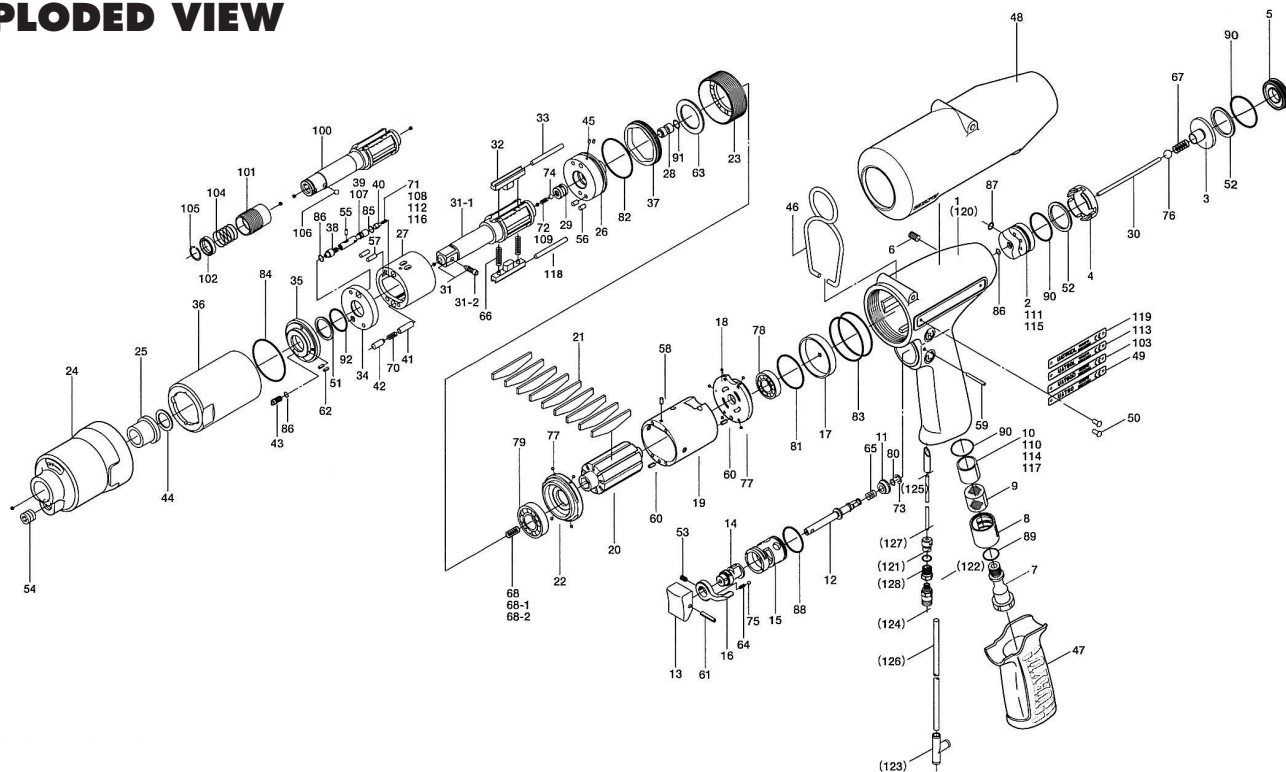


UAT-60, UAT-60D, UAT-60L SERIES OIL-PULSE WRENCHES

EXPLODED VIEW



PARTS LIST — FOR REFERENCE ONLY

Index Number	Part Number	Description	Qty.	Index Number	Part Number	Description	Qty.	Index Number	Part Number	Description	Qty.
1	18C-025-8	Handle	1	44	145-327-7	Anvil Front Spacer	1	88	990-912-0	O-Ring (SNS-14)	1
2	145-253-6	Shut-off Valve Bushing	1	45	150-064-5	Plug	3	89	990-914-0	O-Ring (SNS-16)	1
3	145-254-6	Shut-off Valve	1	46	174-790-0	Suspension Ring	1	90	990-916-0	O-Ring (SNS-18)	3
4	145-684-6	Cushion Spacer	1	47	18C-842-8	Handle Cover	1	91	990-305-0	O-Ring (APR-568-003KS)	1
5	145-019-6	Valve Cover	1	48	145-840-8	Casing Cover	1	92	992-020-0	SU Ring Q12 (NTN)	1
6	150-108-5	Valve Plug	1	49	18C-924-8	Name Plate	1				
7	147-091-2	Air Inlet Bushing	1	50	930-205-0	Driver Rivet (No.0 x 2.6)	2	PARTS FOR UAT-60D			
8	147-780-3	Exhaust Stack	1	51	944-212-0	Back-up Ring (12 x 16 x 1.5)	1	100	145-350-7	Driver Anvil	1
9	147-042-2	Silencer	1	52	944-217-0	Back-up Ring (14 x 20 x 1.8)	2	101	011-351-1	Bit Sleeve (1/8)	1
10	145-835-6	Filter (K50)	1	53	952-106-0	Allen Head Dog Point Screw (M4 x 6)	1	102	011-352-1	Bit Spacer	1
11	147-100-3	Valve	1	54	966-099-0	Allen Head Plug (NPT1/16)	1	103	18D-924-1	Name Plate	1
12	142-104-6	Valve Rod	1	55	970-013-0	Pin (H) (1.5 x 4)	1	104	976-327-0	Spring (13.5 x 11)	1
13	147-107-2	Valve Lever	1	56	970-130-0	Pin (H) (2.45 x 4.5)	2	105	978-117-0	Snap Ring (11.7 x 1)	1
14	147-210-2	Reverse Valve	1	57	970-131-0	Pin (H) (2.45 x 9.5)	2	106	981-002-0	Ball (1/8)	1
15	147-211-2	Reverse Valve Bushing	1	58	971-102-0	Pin (2 x 3.8)	1	107	094-970-4	Relief Valve	1
16	09B-212-5	Reverse Lever	1	59	971-123-0	Pin (2 x 23)	1	108	976-631-0	Spring (2.8 x 7.5) (0.45)	1
17	145-291-7	Rear Plate Spacer	1	60	973-008-0	Roll Pin (2 x 8)	2	109	976-653-0	Spring (2.4 x 5) (0.26)	1
18	145-285-6	Rear Plate	1	61	973-014-0	Roll Pin (2 x 14)	1	PARTS FOR UAT-60L			
19	145-286-6	Cylinder	1	62	973-040-0	Roll Pin (1.5 x 5)	2	110	145-835-8	Filter (K100)	1
20	145-287-6	Rotor	1	63	975-752-0	Adjusting Spacer (15 x 10 x 1)	1	111	145-253-8	Shut-off Valve Bushing	1
21	147-288-2	Blade	9	64	976-006-0	Spring (3 x 5)	1	112	976-998-0	Spring (2.9 x 7.5) (0.45)	1
22	145-289-6	Front Plate	1	65	976-457-0	Spring (7 x 12)	1	113	18D-924-7	Name Plate	1
23	147-036-2	Hammer Casing Connector	1	66	976-792-0	Spring (3.5 x 21)	2	PARTS FOR UAT-60DL			
24	145-439-7	Front Casing	1	67	977-056-0	Spring (4.1 x 4.7 x 9.4) (0.45) WPC	1	114	145-835-8	Filter (K100)	1
25	190-328-6	Anvil Bushing	1	68	976-650-0	Spring (3.3 x 16)	1	115	145-253-9	Shut-off Valve Bushing	1
26	18C-901-9	Rear Liner Plate	1	68-1	976-857-0	Spring (3.3 x 17)	1	116	976-882-0	Spring (2.7 x 7.5) (0.4)	1
27	10E-902-1	Liner	1	68-2	976-662-0	Spring (3.3 x 18)	1	117	18D-924-3	Name Plate	1
28	145-546-6	Piston	1	70	976-999-0	Spring (3.0 x 12) (0.4)	1	118	976-971-0	Spring (2.4 x 5) (0.35)	1
29	145-929-6	Check Valve Cover	1	71	976-636-0	Spring (2.8 x 7.4) (0.45)	1	PARTS FOR (TM) TYPE			
30	145-130-6	Operating Rod	1	72	976-653-0	Spring (2.4 x 5) (0.26)	1	120	852-596-1	Handle	1
31	891-552-1	Anvil Assembly	1	73	979-405-0	Outer Snap Ring (E2.5)	1	121	1/16BK1-10F	Barb 10/32 x 1/16NPT x 1/16	1
31-1	145-319-6	Anvil	1	74	981-001-0	Ball (3/32)	1	122	PQ-MC05N	5/32 x 10/32 Fitting	1
31-2	891-300-1	Socket Pin Assembly	1	75	981-002-0	Ball (1/8)	1	123	909-442-0	Quick Exhaust (AQ240F-04-00)	1
32	145-440-6	Driving Blade	2	76	981-003-0	Ball (5/32)	1	126	935-350-0	Polyurethane Hose (F1504)	1
33	145-974-6	Roller (2.5 x 21)	2	77	981-045-0	Ball (1.5)	9	127	935-358-0	Polyurethane Hose (TU-0212)	1
34	18C-973-8	Liner Casing Spacer	1	78	982-014-0	Ball Bearing (607)	1	ACCESSORIES			
35	145-904-6	Front Liner Plate	1	79	982-902-0	Ball Bearing (6901)	1	130	939-091-0	Allen Wrench (1.5)	1
36	145-905-6	Liner Casing	1	80	990-306-0	O-Ring (ARP568-004)	1	131	939-105-0	Allen Wrench (4)	1
37	145-906-6	Liner Casing Cover	1	81	990-327-0	O-Ring (JW1530-18)	1	134	909-449-0	Speed Controller for TM-Type	1
38	145-907-6	Relief Valve Spindle	1	82	990-329-0	O-Ring (JW1530-19)	1				
39	094-970-4	Relief Valve	1	83	990-337-0	O-Ring (JW1530-27)	2				
40	144-270-0	Pressure Valve	1	84	990-605-0	O-Ring (25 x 1.45)	1				
41	080-274-6	Pressure Valve Spring Collar	1	85	990-621-0	O-Ring (3.8 x 1.8 x 1.0)	1				
42	18E-276-3	Pressure Valve Body	1	86	990-900-0	O-Ring (SNS-2)	3				
43	194-742-0	Oil Plug	1	87	990-901-0	O-Ring (SNS-3)	1				



10000 SE PINE
PORTLAND, OR 97216
503-254-6600
FAX 503-255-2615

When ordering spare parts, please specify
tool type, part number, and description.

FOOTNOTES

- = Items in Pulse Repair Kit UAT-60-RK
- = Items in Pulse Repair Kit UAT-60D-RK
- ▲ = Items in Repair Kit UAT-60D-RK