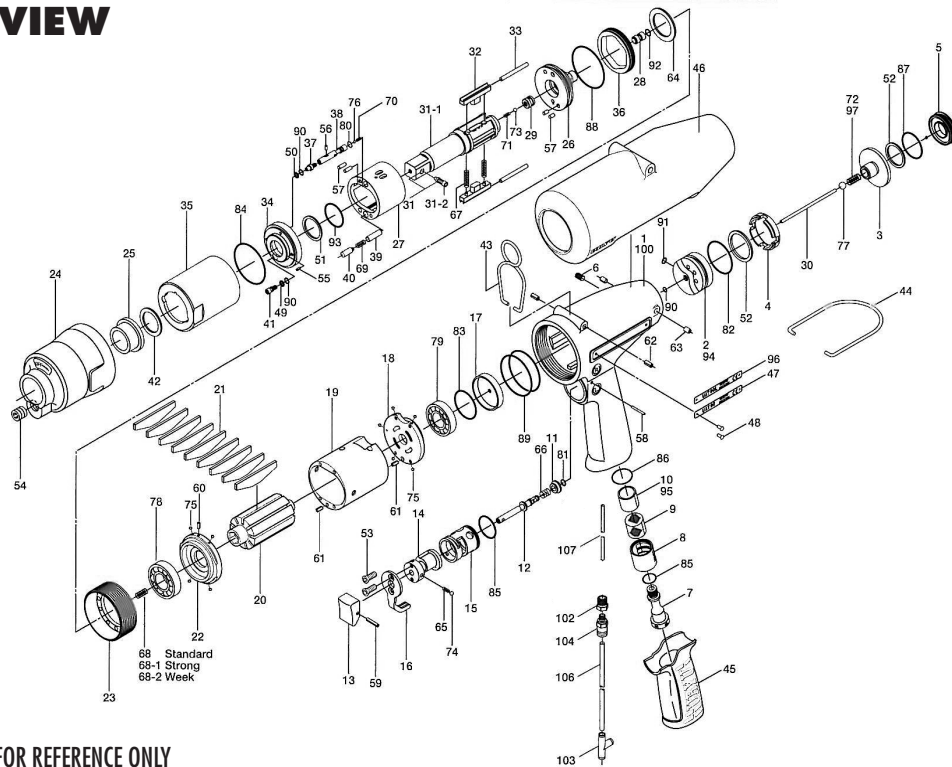


# UAT-90 SERIES OIL-PULSE WRENCHES

## EXPLODED VIEW



## PARTS LIST — FOR REFERENCE ONLY

Index Number	Part Number	Description	Qty.	Index Number	Part Number	Description	Qty.	Index Number	Part Number	Description	Qty.
1	18F-025-5	Handle	1	38	18F-970-5	Relief Valve	1	75	981-045-0	Ball (1.5)	9
2	147-253-8	Shut-off Valve Bushing	1	39	18F-274-8	Pressure Valve Spring Collar	1	76	981-150-0	Ball (3)	1
3	148-254-2	Shut-off Valve	1	40	18F-276-6	Pressure Valve Body	1	77	981-245-0	Ball (4.5)	1
4	147-684-8	Cushion Spacer	1	41	194-742-3	Oil Plug	1	78	982-903-0	Ball Bearing (6902)	1 ▲
5	147-019-8	Valve Cover	1	42	147-327-9	Anvil Front Spacer	1	79	982-949-0	Ball Bearing (16001)	1 ▲
6	150-108-5	Valve Plug	1	43	174-790-0	Suspension Ring	1	80	990-320-0	O-Ring (ARPS68-003)	1 ●
7	147-091-8	Air Inlet Bushing	1	44	191-790-1	Suspension Ring	1	81	990-306-0	O-Ring (ARPS68-004)	1
8	147-780-9	Exhaust Stack	1	45	18C-842-8	Handle Cover	1	82	990-331-0	O-Ring (JW1530-21)	1
9	147-042-8	Silencer	1	46	147-840-9	Casing Cover	1	83	990-334-0	O-Ring (JW1530-24)	1
10	147-835-8	Filter (K100)	1 ▲	47	18F-924-5	Name Plate	1	84	990-337-0	O-Ring (JW1530-27)	1 ●
11	147-100-8	Valve	1	48	930-205-0	Driver Rivet (NO.0 x 2.6)	2	85	990-914-0	O-Ring (SNS-16)	2
12	147-104-8	Valve Rod	1	49	944-003-0	Back-up Ring (3 x 5 x 1)	1 ●	86	990-919-0	O-Ring (SNS-22)	1
13	147-107-2	Valve Lever	1	50	944-203-0	Back-up Ring (3.1 x 5 x 1)	1 ●	87	990-923-0	O-Ring (SNS-26)	1
14	147-210-8	Reverse Valve	1	51	944-215-0	Back-up Ring (19.9 x 1.5)	1 ●	88	990-924-0	O-Ring (SNS-30)	1 ●
15	147-211-8	Reverse Valve Bushing	1	52	944-222-0	Back-up Ring (20 x 27.5 x 1.5)	2	89	990-932-0	O-Ring (SNS-42)	2 ▲
16	147-212-8	Reverse Lever	1	53	948-423-0	Allen Flush Head Screw (M3 x 6)	2	90	990-970-0	O-Ring (SNS-2) NOK	3 ●
17	147-291-9	Rear Plate Spacer	1	54	966-099-0	Allen Head Plug (NPT1/16)	1	91	990-971-0	O-Ring (SNS-3) NOK	1
18	147-285-8	Rear Plate	1	55	969-449-0	Pin (G)(3 x 6)	1	92	990-305-0	O-Ring (ARPS68-003)	1 ●
19	147-286-8	Cylinder	1	56	970-091-0	Pin (H)(2 x 4.5)	1	93	990-021-0	SU-Ring (Q16)	1 ●
20	147-287-8	Rotor	1	57	970-205-0	Pin (H)(3 x 7)	4	<b>PARTS FOR UAT-90L</b>			
21	147-288-8	Blade	9 ▲	58	971-125-0	Pin (2 x 25)	1	94	147-253-9	Shut-off Valve Bushing	1
22	147-289-8	Front Plate	1	59	973-014-0	Roll Pin (2 x 14)	1	95	147-835-9	Filter (K200)	1
23	147-036-8	Hammer Casing Connector	1	60	973-006-0	Roll Pin (2 x 6)	1	96	18F-924-6	Name Plate	1
24	147-439-8	Front Casing	1	61	973-068-0	Roll Pin (2.5 x 8)	2	97	976-814-0	Spring (4.6 x 12)	1
25	147-328-8	Anvil Bushing	1	62	973-308-0	Roll Pin (5 x 8)	2	<b>PARTS FOR UAT-90TM</b>			
26	18F-901-6	Rear Liner Plate	1	63	973-307-0	Roll Pin (5 x 6)	2	100	852-571-1	Handle	1
27	18F-902-5	Liner	1	64	975-780-0	Adjusting Spacer (21 x 13 x t)	1	102	1/16BK1-10F	Barb 10/32 x 1/16npt x 1/16	1
28	145-546-6	Piston	1	65	976-006-0	Spring (3 x 5)	1	103	909-442-0	Quick Exhaust (AQ240F-04-00)	1
29	130-929-4	Check Valve Cover	1	66	976-643-0	Spring (7.5 x 9.7)	1	104	PQ-MC05N	5/32 x 10/32 Fitting	1
30	147-130-8	Operating Rod (2.1 x 64.5)	1	67	976-794-0	Spring (3.8 x 33) WPC	2 ●	106	935-350-0	Polyurethane Hose (F-1504)	1
31	891-551-1	Anvil Assembly	1	68	976-967-0	Spring (3.3 x 17.7) (0.45) Standard	1	107	935-358-0	Polyurethane Hose (TU-0212)	1
31-1	147-319-9	Anvil	1	68-1	976-662-0	Spring (3.3 x 18) (0.45) Weak	1	<b>ACCESSORIES</b>			
31-2	891-304-1	Socket Pin Assembly	1	68-2	976-968-0	Spring (3.3 x 18.2) (0.45) Strong	1	110	939-091-0	Allen Wrench (1.5)	1
32	147-440-9	Driving Blade	2	69	976-889-0	Spring (3.5 x 18)	1 ●	111	939-105-0	Allen Wrench (4)	1
33	147-974-8	Roller (2.5 x 30)	2	70	976-998-0	Spring (2.9 x 7.5) (0.45)	1	113	909-449-0	Speed Controller	1
34	18F-904-5	Front Liner Plate	1	71	976-645-0	Spring (2.4 x 5) (0.30)	1 ●	<b>FOOTNOTES</b>			
35	147-905-8	Liner Casing	1	72	976-813-0	Spring (4.5 x 12)	1	● = Items in Pulse Repair Kit UAT-90-PRK			
36	147-906-8	Liner Casing Cover	1	73	981-001-0	Ball (3/32)	1	▲ = Items in Repair Kit UAT-90-RK			
37	174-907-2	Relief Valve Spindle	1	74	981-002-0	Ball (1/8)	1				



10000 SE PINE  
PORTLAND, OR 97216  
503-254-6600  
FAX 503-255-2615

When ordering spare parts, please specify  
tool type, part number, and description.

### FOOTNOTES

- = Items in Pulse Repair Kit UAT-90-PRK
- ▲ = Items in Repair Kit UAT-90-RK