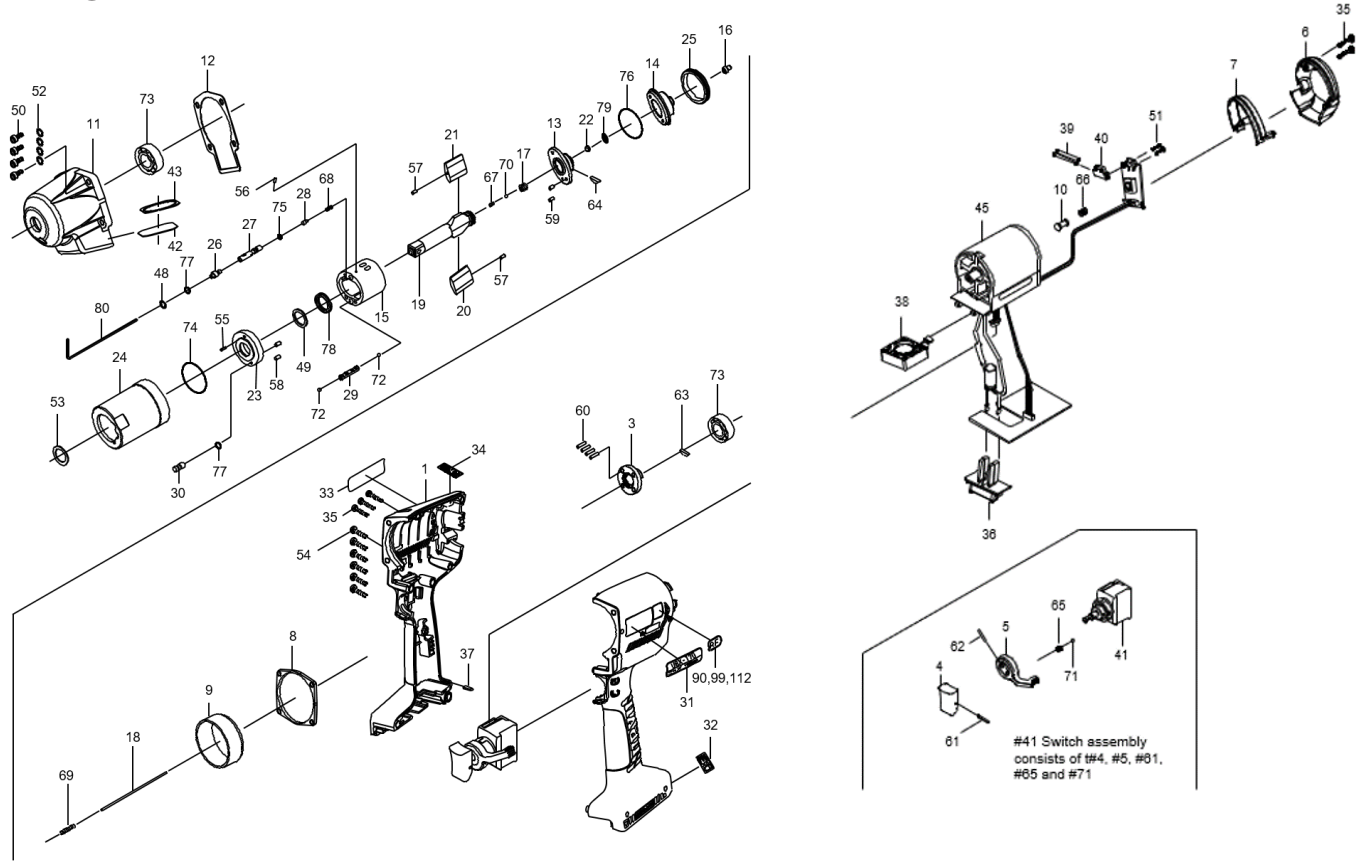


UBX-T70 SHUT-OFF BATTERY PULSE TOOL

EXPLODED VIEW



PARTS LIST — FOR REFERENCE ONLY

Index Number	Part Number	Description	Qty.	Index Number	Part Number	Description	Qty.	Index Number	Part Number	Description	Qty.
1	10F-025-0	Handle	1	29	12A-276-5	Pressure Valve Body	1	54	963-253-0	Tapping Screw (3 x 16)	6
3	12F-079-0	Connector	1	30	194-742-0	Oil Plug	1	55	969-449-0	Pin (G) (3 x 6)	1
4	147-107-2	Trigger	1	31	12F-924-0	Name Plate	1	56	970-013-0	Pin (H) (1.5 x 4)	1
5	09B-212-5	Reverse Lever	1	32	12F-993-0	Plate (Specifications)	1	57	970-014-0	Pin (H) (1.5 x 6.8)	2
6	12F-012-0	Body Cover	1	33	094-997-4	Plate (Others)	1	58	970-147-0	Pin (H) (2.5 x 5)	2
7	12F-013-0	Top Cover	1	34	094-996-4	Plate (Caution)	1	59	972-033-0	Pin (2.5 x 8)	2
8	12F-035-0	Connector	1	35	861-181-1	Tapping Screw	5	60	972-087-0	Pin (3 x 6)	4
9	12F-036-0	Hammer Case Connector	1	36	910-383-0	Battery Terminal Block	1	61	973-014-0	Roll Pin (2 x 14)	1
10	12F-038-0	Slide Base	1	37	910-404-0	Level Display Cover	1	62	973-018-0	Roll Pin (2 x 18)	1
11	12F-439-0	Front Case	1	38	910-484-0	Fan Assembly	1	63	974-952-0	Half-moon Key (3 x 12) (3)	1
12	12F-867-0	Front Case Packing	1	39	910-449-0	Elastomer Tube (2)	2	64	974-961-0	Half-moon Key (1.5 x 15.8)	1
13	12F-901-0	Liner Rear Plate	1	40	910-468-0	LED Cover	1	65	976-006-0	Spring (3 x 5) (0.4)	1
14	12F-310-0	Anvil Front Spacer	1	41	910-475-0	Switch Assembly	1	66	976-499-0	Spring (7.3 x 9.4) (0.4)	1
15	12A-902-5	Liner	1	42	910-476-0	Nylon Mesh	1	67	976-526-0	Spring (2.4 x 5.5) (0.26)	1
16	12F-546-0	Piston	1	43	910-477-0	Mesh Plate	1	68	976-958-0	Spring (2.8 x 6.9) (0.4) n=6.25	1
17	145-929-6	Check Valve Cover	1	44	911-046-0	Battery Board Assembly	1	69	976-966-0	Spring (3.3 x 9) (0.35)	1
18	12F-130-0	Operating Rod (1.8 x 65.5)	1	45	911-042-0	Motor Assembly (T type) (L=35)	1	70	981-001-0	Ball (3/32)	1
19	12F-319-0	Anvil	1	46	863-890-1	Motor (T type)	1	71	981-002-0	Ball (1/8)	1
20	12A-440-5	Driving Blade (A)	1	47	863-891-1	Control Board with LED and Buzzer	1	72	981-225-0	Ball (2.5mm)	2
21	12A-440-6	Driving Blade (B)	1	48	944-203-0	Supporting Ring (3.1 x 5 x 1)	1	73	982-922-0	Ball Bearing 6901ZZ	2
22	12F-835-0	Filter (K200)	1	49	944-312-0	Backup Ring P12 (Bias)	1	74	990-334-0	O-Ring (JW1530-24)	1
23	12A-904-3	Liner Front Plate	1	50	945-026-0	Allen Head Bolt (M4 x 16)	4	75	990-621-0	O-Ring (3.8 x 1.8 x 1.0)	1
24	12A-905-5	Liner Casing	1	51	957-063-0	Allen Head Screw (M2 x 4)	2	76	990-923-0	O-Ring (SNS-26)	1
25	12A-906-3	Liner Casing Cover	1	52	961-009-0	Round Washer (M4) (8 x 0.5)	4	77	990-970-0	O-Ring (SNS-2) (NOK)	2
26	174-907-2	Relief Valve Spring	1	53	962-800-0	Wave Washer (BWW-625)	1	78	991-030-0	X-Ring (X12)	1
27	12F-970-0	Relief Valve	1					79	996-280-0	Diaphragm	1
28	144-270-0	Pressure Valve	1					80	939-091-0	Allen Wrench (1.5)	1

FOOTNOTES



10000 SE PINE
PORTLAND, OR 97216
503-254-6600
FAX 503-255-2615

When ordering spare parts, please specify tool type, part number, and description.