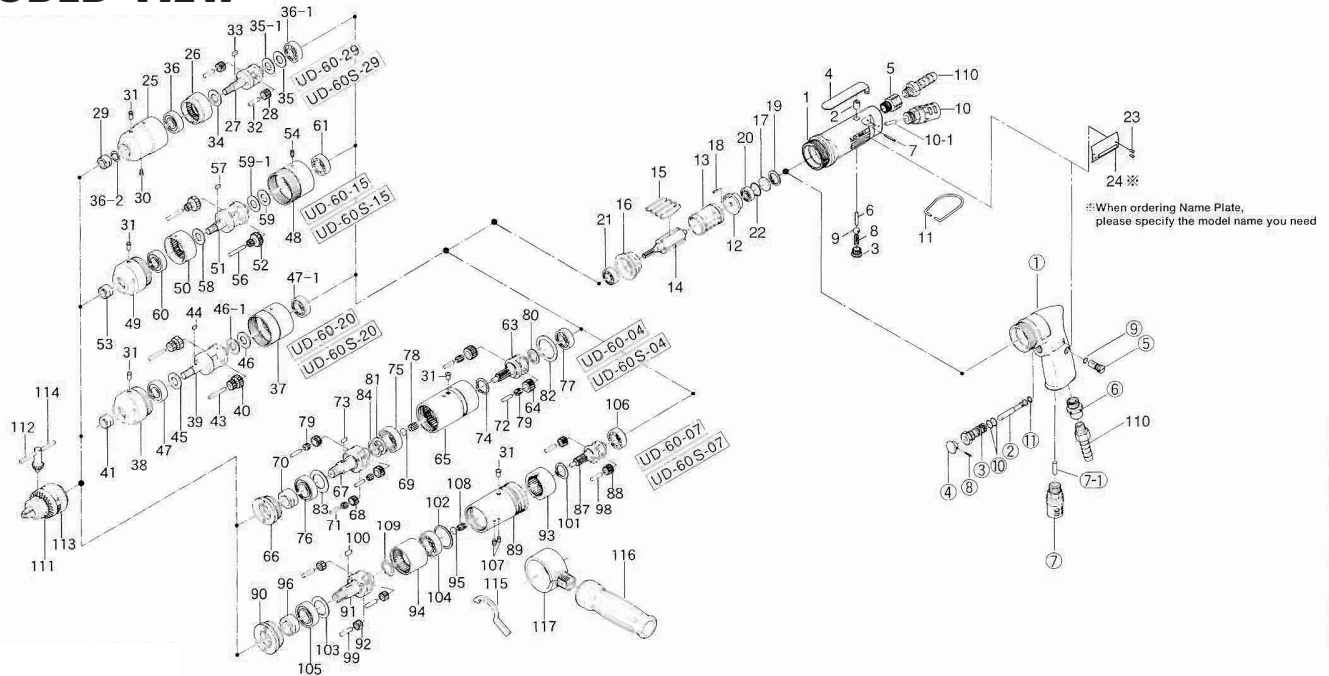


UD-60 & UD-60S SERIES (-04, -07, -15, -20, -29) AIR DRILLS

EXPLODED VIEW



PARTS LIST — FOR REFERENCE ONLY

617-984-7 CASING ASSEMBLY (STRAIGHT HANDLE)

(Components are marked with *)

Index Number	Part Number	Description	Qty.
1	617-025-7	Casing	1*
2	553-103-1	Valve Rod Bushing	1*
3	201-108-1	Valve Plug	1*
4	500-107-1	Valve Lever	1*
5	191-091-5	Air Inlet Bushing	1*
6	970-321-0	Pin (H)(4 x 21)	1*
7	973-124-0	Roll Pin (3 x 24)	1*
8	977-154-0	Cone Spring (7 x 7.5 x 17)	1*
9	981-030-0	Polyurethane Ball (3/8)	1*
10	235-885-0	Silencer	1*
10-1	027-744-7	Silencer Tube	1*
11	010-790-1	Suspension Ring	1*

612-984-0 HANDLE ASSEMBLY (PISTOL HANDLE)

(Components are marked with x)

Index Number	Part Number	Description	Qty.
1	612-025-0	Handle	1 x
2	603-100-2	Valve	1 x
3	606-101-1	Valve Bushing	1 x
4	603-107-2	Throttle Trigger	1 x
5	023-240-1	Regulator Valve	1 x
6	191-091-5	Air Inlet Bushing	1 x
7	235-885-0	Silencer	1 x
7-1	027-744-7	Silencer Tube	1 x
8	973-010-0	Roll Pin (2 x 10)	1 x
9	990-003-0	O-Ring (P-5)	1 x
10	990-610-0	O-Ring (8 x 2)	2 x
11	990-203-0	O-Ring (JW1516-3)	1 x

COMMON PARTS

12	600-285-2	Rear Plate	1
13	600-286-1	Cylinder	1
14	612-287-0	Rotor	1
15	600-288-2	Blade	4 ●
16	612-289-0	Front Plate	1
17	600-291-1	Rear Plate Spacer	1
18	973-006-0	Roll Pin (2 x 6)	1
19	978-231-0	Snap Ring (23 x 1.2)	1
20	982-401-0	Ball Bearing (EE-2)	1 ●
21	982-402-0	Ball Bearing (EE-3)	1 ●
22	990-914-0	O-Ring (SNS-16)	1 ●
23	930-205-0	Driver Rivet	1
24	612-992-0	Name Plate UD-60-04	2

612-005-8 GEAR BOX ASSEMBLY FOR UD-60-29 & UD-60S-29

25	612-029-8	Gear Casing	1
26	612-465-8	Internal Gear	1
27	612-319-8	Anvil	1
28	612-470-5	Planet Gear	2
29	603-411-1	Chuck Retainer	1

612-005-4 GEAR BOX ASSEMBLY FOR UD-60-20 & UD-60S-20

30	312-757-1	Internal Gear Set Screw	1
31	968-130-0	Grease Cup (3/16)	1
32	972-164-0	Needle Roller (5 x 20)	2
33	974-005-0	Key (3 x 6)	1
34	975-169-0	Spacer (21 x 13 x 0.3)	1
35	975-138-0	Spacer (22 x 13.7 x 2)	1
35-1	975-757-0	Adjusting Spacer (18 x 13 x 1)	1
36	982-140-0	Ball Bearing (6000Z)	1
36-1	982-403-0	Ball Bearing (EE-4)	1
36-2	993-039-0	Felt Ring (25 x 17 x 3)	1

612-005-7 GEAR BOX ASSEMBLY FOR UD-60-15 & UD-60S-15

37	612-035-3	Casing Connector	1
38	612-029-4	Gear Casing	1
39	612-319-4	Anvil	1
40	612-470-4	Planet Gear	2
41	603-411-1	Chuck Retainer	1
31	968-130-0	Grease Cup (3/16)	1
43	972-174-0	Needle Roller (5 x 32)	2
44	974-005-0	Key (3 x 6)	1
45	975-169-0	Spacer (21 x 13 x 0.3)	1
46	975-138-0	Spacer (22 x 13.7 x 2)	1
46-1	975-757-0	Adjusting Spacer (18 x 13 x 1)	1
47	982-140-0	Ball Bearing (6000Z)	1
47-1	982-403-0	Ball Bearing (EE-4)	1

612-005-6 GEAR BOX ASSEMBLY FOR UD-60-07 & UD-60S-07

48	612-035-3	Casing Connector	1
49	612-029-7	Gear Casing	1
50	612-465-7	Internal Gear	1
51	612-319-7	Anvil	1
52	612-470-3	Planet Gear	2
53	603-411-1	Chuck Retainer	1
54	952-220-0	Allen Head Screw (M5 x 5) (MEC)	1
31	968-130-0	Grease Cup (3/16)	1
56	972-174-0	Needle Roller (5 x 32)	2
57	974-005-0	Key (3 x 6)	1
58	975-169-0	Spacer (21 x 13 x 0.3)	1
59	975-138-0	Spacer (22 x 13.7 x 2)	1
59-1	975-757-0	Adjusting Spacer (18 x 13 x 1)	1
60	982-140-0	Ball Bearing (6000Z)	1
61	982-403-0	Ball Bearing (EE-4)	1

612-005-0 GEAR BOX ASSEMBLY FOR UD-60-04 & UD-60S-04

63	612-480-0	Gear Cage	1
64	612-470-0	First Planet Gear	2
65	612-029-9	Gear Casing	1
66	612-070-1	Gear Casing Cover	1
67	612-319-0	Anvil	1
68	612-471-0	Second Planet Gear	3
69	612-414-1	Front Cover	1

612-005-5 GEAR BOX ASSEMBLY FOR UD-60-04 & UD-60S-04

70	609-411-1	Chuck Retainer	1
71	972-115-0	Needle Roller (4 x 16)	3
72	972-117-0	Needle Roller (4 x 17)	2
73	974-010-0	Key (3 x 10)	1
74	978-202-0	Snap Ring (20 x 1)	1
75	982-103-0	Ball Bearing (6003)	1
76	982-143-0	Ball Bearing (6003Z)	1
77	982-403-0	Ball Bearing (EE-4)	1
78	988-004-0	Needle Bearing (NK5/12)	1
79	988-450-0	Needle Bearing (HK-0408)	1
80	975-136-0	Spacer (22 x 13.7 x 0.6)	1
81	975-172-0	Spacer (24 x 18 x 1)	1
82	975-294-0	Spacer (38 x 29 x 2)	1
83	975-250-0	Spacer (32.5 x 21.2 x 1)	1
84	975-789-0	Adjusting Spacer (22 x 17 x 1)	1
31	968-130-0	Grease Cup (3/16)	1

612-005-9 GEAR BOX ASSEMBLY FOR UD-60-07 & UD-60S-07

87	612-480-6	Gear Cage	1
88	612-470-1	First Planet Gear	2
89	612-029-6	Gear Casing	1
90	612-070-1	Gear Casing Cover	1
91	612-319-6	Anvil	1
92	612-471-1	Second Planet Gear	3
93	612-465-6	First Internal Gear	1
94	612-466-6	Second Internal Gear	1
95	612-414-1	Front Cover	1
96	609-411-1	Chuck Retainer	1
31	968-130-0	Grease Cup (3/16)	1
98	972-119-0	Needle Roller (4 x 18)	2
99	972-163-0	Needle Roller (5 x 18)	3
100	974-010-0	Key (3 x 10)	1
101	978-202-0	Snap Ring (20 x 1)	1
102	975-269-0	Spacer (35 x 30 x 1)	1
103	975-250-0	Spacer (32.5 x 21.2 x 1)	1
104	982-103-0	Ball Bearing (6003)	1
105	982-143-0	Ball Bearing (6003Z)	1
106	982-403-0	Ball Bearing (EE-4)	1
107	952-204-0	Allen Head Screw (M4 x 23)	2
108	988-004-0	Needle Roller Bearing (NK5/12)	1
109	975-789-0	Adjusting Spacer (22 x 17 x 1)	1

ACCESSORIES

111	923-070-0	Chuck (8 mm)	1
112	927-057-0	Chuck Handle (5/6.5)	1
113	923-071-0	Chuck (13 mm)	1
114	927-053-0	Chuck Handle (10 mm)	1
115	937-065-0	Spanner (4.8 x 22 x 153)	1
116	613-720-0	Dead Handle	1
117	613-730-0	Dead Handle Connector	1

FOOTNOTES

● = Items in Pulse Repair Kit UD-60-RK



10000 SE PINE
PORTLAND, OR 97216
503-254-6600
FAX 503-255-2615

When ordering spare parts, please specify
tool type, part number, and description.