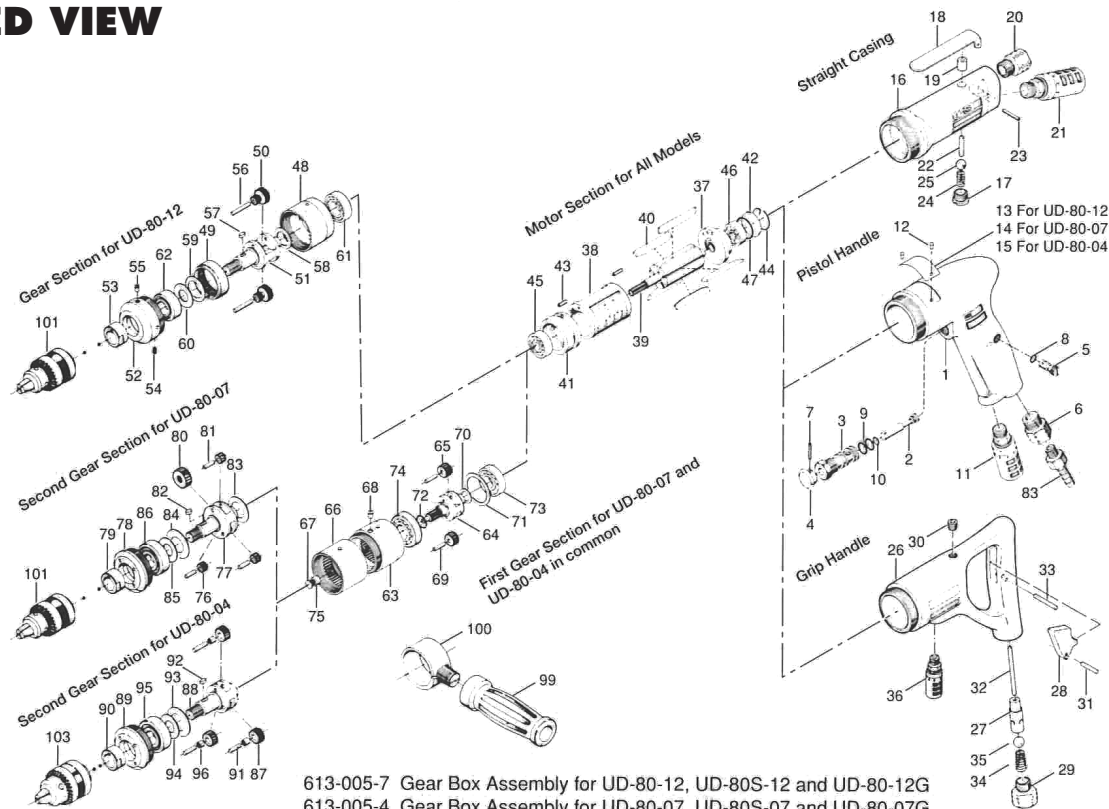


# UD-80, UD-80S [-04(G), -07(G), -12(G)] SERIES AIR DRILLS

## EXPLODED VIEW



613-005-7 Gear Box Assembly for UD-80-12, UD-80S-12 and UD-80-12G  
 613-005-4 Gear Box Assembly for UD-80-07, UD-80S-07 and UD-80-07G  
 613-005-0 Gear Box Assembly for UD-80-04, UD-80S-04 and UD-80-04G  
 613-896-0 Dead Handle Assembly

## PARTS LIST — FOR REFERENCE ONLY

Index Number	Part Number	Description	Qty.
<b>613-984-0 HANDLE ASSEMBLY (PISTOL TYPE)</b>			
Component parts are marked with ●			
1	613-025-0	Handle	1 ●
2	603-100-2	Valve	1 ●
3	606-101-1	Valve Bushing	1 ●
4	603-107-2	Throttle Trigger	1 ●
5	023-240-1	Regulator Valve	1 ●
6	191-091-5	Air Inlet Bushing	1 ●
7	973-010-0	Roll Pin (2 x 10)	1 ●
8	990-003-0	O-Ring (P-5)	1 ●
9	990-610-0	O-Ring (8 x 2)	2 ●
10	990-203-0	O-Ring (JW1516-3)	1 ●
11	235-885-0	Silencer	1 ●
12	930-205-0	Driver Rivet	2
13	613-924-7	Name Plate (UD-80-12)	1
14	613-924-4	Name Plate (UD-80-07)	1
15	613-924-0	Name Plate (UD-80-04)	1
<b>613-984-3 CASING ASSEMBLY (STRAIGHT TYPE)</b>			
Component parts are marked with ■			
16	613-025-3	Casing	1 ■
17	201-108-1	Valve Plug	1 ■
18	461-107-1	Valve Lever	1 ■
19	553-103-1	Valve Rod Bushing	1 ■
20	191-091-5	Air Inlet Bushing	1 ■
21	235-885-0	Silencer	1 ■
22	970-324-0	Pin (H)(4 x 24)	1 ■
23	973-124-0	Roll Pin (3 x 24)	1 ■
24	977-153-0	Cone Spring (7 x 7.5 x 20)	1 ■
25	981-030-0	Ball (3/8)	1 ■
<b>613-984-8 HANDLE ASSEMBLY (GRIP TYPE)</b>			
Component parts are marked with ▲			
26	613-025-8	Handle	1 ▲
27	054-102-1	Valve Bushing	1 ▲
28	085-107-1	Throttle Trigger	1 ▲
29	185-091-7	Air Inlet Bushing	1 ▲
30	966-100-0	Allen Head Plug (1/8)	1 ▲
31	970-224-0	Pin (H)(3 x 24)	1 ▲

Index Number	Part Number	Description	Qty.
32	970-356-0	Pin (H)(4 x 56)	1 ▲
33	973-124-0	Roll Pin (3 x 24)	1 ▲
34	977-220-0	Cone Spring (9 x 10 x 25)	1 ▲
35	981-210-0	Ball (3/8)	1 ▲
36	235-885-0	Silencer	1 ▲
<b>COMMON PARTS</b>			
37	609-285-2	Rear Plate	1
38	312-286-1	Cylinder	1
39	312-287-1	Rotor	1
40	312-288-1	Blade	5
41	609-289-1	Front Plate	1
42	609-291-1	Rear Plate Spacer	1
43	973-108-0	Roll Pin (3 x 8)	2
44	978-269-0	Snap Ring (27 x 1.2)	1
45	982-015-0	Ball Bearing (608)	1
46	982-022-0	Ball Bearing (627)	1
47	990-919-0	O-Ring (SNS-22)	1
<b>GEAR BOX ASSEMBLY</b>			
PARTS for UD-80-12 series			
48	613-029-7	Gear Casing	1
49	613-465-7	Internal Gear	1
50	613-470-7	Planet Gear	2
51	613-319-7	Anvil (1/2)	1
52	613-070-7	Gear Casing Cover	1
53	609-411-1	Chuck Retainer	1
54	952-220-0	Allen Head Screw (M5 x 5) (MEC)	1
55	968-130-0	Grease Cup (3/16)	1
56	972-172-0	Roller Pin (5 x 28)	2
57	974-005-0	Key (3 x 6)	1
58	975-208-0	Spacer (27 x 18.5 x 2)	1
59	975-250-0	Spacer (32.5 x 21.2 x 1)	1
60	975-757-0	Adjusting Spacer (18 x 13 x 1)	1
61	982-101-0	Ball Bearing (6001)	1
62	982-143-0	Ball Bearing (6003Z)	1
PARTS for UD-80-07 and UD-80-04 series in common			
63	613-030-0	First Gear Casing	1
64	613-480-0	First Gear Cage	1
65	613-470-0	First Planet Gear	2
66	613-031-0	Second Gear Casing	1
67	612-414-1	Front Cover	1

Index Number	Part Number	Description	Qty.
68	968-130-0	Grease Cup (3/16)	1
69	972-165-0	Roller Pin (5 x 19)	2
70	975-095-0	Spacer (18 x 13 x 1)	1
71	975-310-0	Spacer (41 x 33 x 2)	1
72	978-179-0	Snap Ring (18 x 1.0)	1
73	982-101-0	Ball Bearing (6001)	1
74	982-405-0	Ball Bearing (EE6)	1
75	988-004-0	Needle Roller Bearing (NK5/12)	1
PARTS for UD-80-07 series			
76	613-471-4	Second Planet Gear	3
77	613-319-4	Anvil	1
78	613-070-0	Gear Casing Cover	1
79	609-411-1	Chuck Retainer	1
80	613-462-4	Second Gear Cage Gear	1
81	972-163-0	Roller Pin (5 x 18)	3
82	974-010-0	Key (3 x 10)	1
83	975-247-0	Spacer (32 x 20.5 x 1)	1
84	975-292-0	Spacer (37 x 21 x 1)	1
85	975-796-0	Adjusting Spacer (28 x 20 x 1)	1
86	982-243-0	Ball Bearing (6203Z)	1
PARTS for UD-80-04 series			
87	613-471-0	Second Planet Gear	3
88	613-319-1	Anvil (5/8)	1
89	613-070-0	Gear Casing Cover	1
90	609-411-1	Chuck Retainer	1
91	972-163-0	Roller Pin (5 x 18)	3
92	974-010-0	Key (3 x 10)	1
93	975-292-0	Spacer (37 x 21 x 1)	1
94	975-796-0	Adjusting Spacer (28 x 20 x 1)	1
95	982-243-0	Ball Bearing (6203Z)	1
96	988-504-0	Needle Roller Bearing (N5/8)	3
<b>ACCESSORIES</b>			
98	937-054-0	Spanner (4.6 x 26 x 180)	1
99	613-720-0	Dead Handle	1
100	613-730-0	Dead Handle Connector	1
For 07 series & 12 series			
101	923-071-0	Drill Chuck 13 mm (1/2-20UNF)	1
102	927-053-0	Chuck Handle 10	1
For 04 series			
103	923-080-0	Drill Chuck 16mm (5/8-16UN)	1
104	927-054-0	Chuck Handle 13	1



10000 SE PINE  
 PORTLAND, OR 97216  
 503-254-6600  
 FAX 503-255-2615

When ordering spare parts, please specify  
 tool type, part number, and description.

### FOOTNOTES