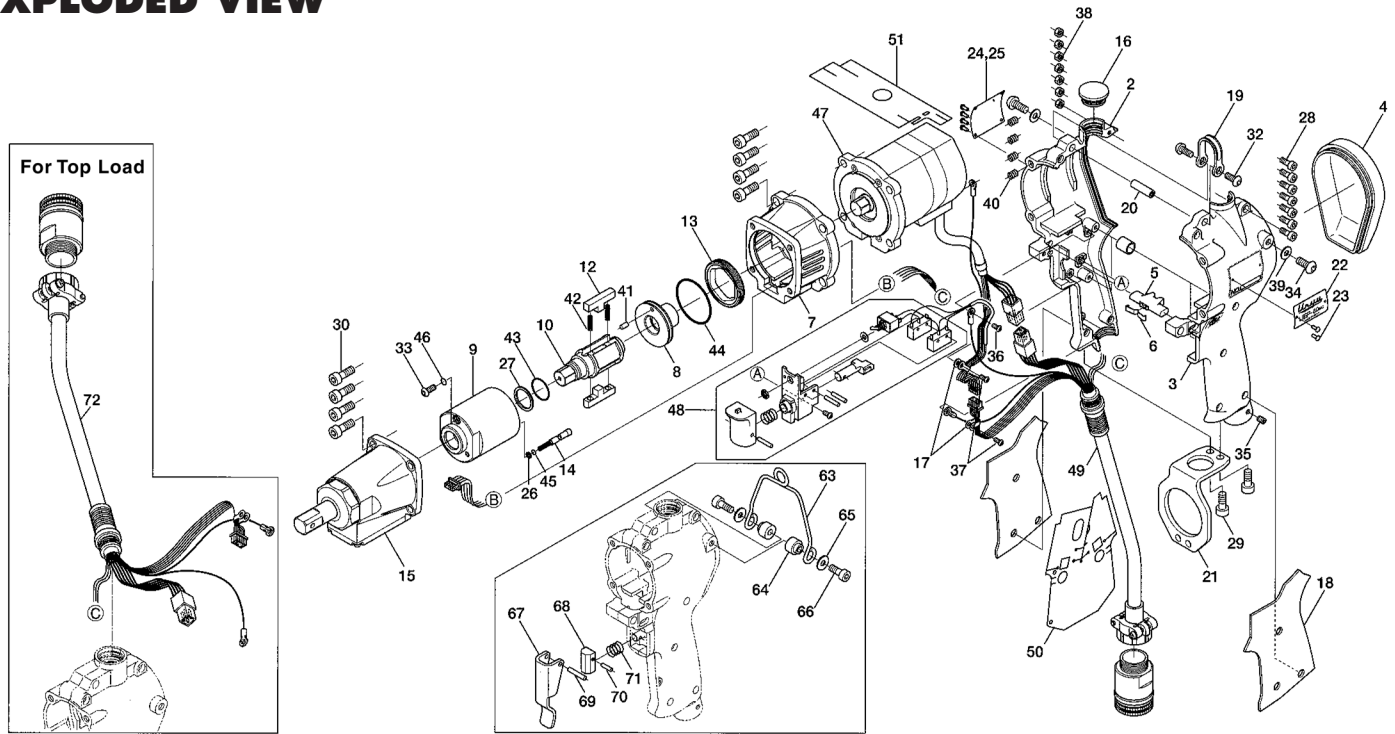


# UEP-80MC SERIES ELECTRIC OIL-PULSE TOOL

## EXPLODED VIEW



## PARTS LIST — FOR REFERENCE ONLY

Index Number	Part Number	Description	Qty.	Index Number	Part Number	Description	Qty.	Index Number	Part Number	Description	Qty.
1	137-004-0	Handle Assembly	1	32	945-941-0	Hexagon Round Head Bolt (M4 x 5)	2	<b>PARTS FOR 115V</b>			
2	137-025-0	Handle Set	1 ●	33	945-942-0	Hexagon Round Head Bolt (M4 x 6)	1	55	910-946-0	Driver Box UEPD-71A-UL (115V)	1
3	137-083-0	Handle Supporter	1 ●	34	945-949-0	Hexagon Round Head Bolt (M5 x 6)	2	56	910-217-0	Power Cable (115V)	1
4	137-012-0	Head Cover	1	35	954-105-0	Allen Head Cone Point Screw (M4 x 5)	1	<b>ACCESSORIES</b>			
5	136-212-8	Reverse Lever	1	36	957-106-0	Cross Pan Head Screw (M4 x 6)	1	57	910-532-0	Coil Cable Assembly	1
6	136-217-7	Plate Spring	1	37	957-215-0	Cross Pan Head Screw (M3 x 5)	2	58	910-546-0	Joint Cable Assembly (3 M)	1
7	137-027-8	Separator	1	38	960-020-0	Hexagon Nut (1-M3)	7 ●	59	910-547-0	Joint Cable Assembly (5 M)	1
8	137-901-8	Liner Rear Plate	1	39	961-012-0	Flat Washer (5 MM)	2	60	910-548-0	Joint Cable Assembly (10 M)	1
9	143-902-9	Liner	1	40	965-021-0	Heli-Sert (M5 x 1.5D)	4	61	910-623-0	Sensor Cable Assembly	1
10	137-319-8	Anvil	1	41	970-204-0	Pin (3 x 6)	1	62	910-632-0	Connector Cover	1
12	137-440-0	Driving Blade	2	42	976-787-0	Spring (3.8 x 33) (0.45) WPC	2	<b>OPTION: 851-106-1 SUSPENSION RING ASSEMBLY</b>			
13	143-906-9	Liner Casing Setter	1	43	990-156-0	O-Ring (P16) (NTN)	1	63	851-107-1	Suspension Ring	1
14	143-975-8	Relief Valve	1	44	990-915-0	O-Ring (SNS-29)	1	64	193-791-6	Suspension Receiver	2
15	851-681-1	Sensor Casing Assembly (S8-12.7)	1	45	990-970-0	O-Ring (SNS-2) (NOK)	1	65	193-792-6	Suspension Plate	2
16	136-064-7	Plug	1	46	990-971-0	O-Ring (SNS-3) (NOK)	1	66	945-112-0	Allen Head Bolt (M5 x 12)	2
17	136-670-7	Band	2	47	910-508-0	Electric Motor	1	67	163-107-6	Valve Lever	1
18	136-842-0	Handle Cover	1	48	910-602-0	Starting Switch Assembly	1	<b>OPTION: 851-104-1 LEVER ASSEMBLY</b>			
19	136-790-7	Suspension Bail	1	49	910-526-0	Handle Cable Assembly (CE 1.8)	1	68	850-952-1	Valve Rod Cap	1
20	136-791-7	Suspension Bail Base	1	50	910-660-0	Insulation Sheet (Grip)	1	69	970-222-0	Pin (H)(3 x 22)	1
21	136-794-7	Suspension Plate	1	51	910-664-0	Insulation Sheet (Motor 80)	1	70	970-102-0	Pin (H)(2 x 16)	1
22	137-924-8	Name Plate	1	52	909-697-0	Shrink Tube (9 x 10)	4	71	976-296-0	Spring (10.2 x 15)(0.6)	1
23	930-205-0	Driver Rivet (No.0 x 2.6)	6	<b>PARTS FOR 230V</b>				<b>OPTION: FOR TOP LOAD</b>			
24	136-993-9	Name Plate (Spec.)(230V)	1	53	910-842-0	Driver Box UEPD-71E-CE (230V)	1	72	910-528-0	Handle Cable Assembly (CE)	1
25	137-993-7	Name Plate (Spec.)(115V)	1	54	910-218-0	Power Cable (230V)	1				
26	944-002-0	Supporting Ring (2.6 x 4.5 x 1)	1								
27	944-215-0	Supporting Ring (16 x 19.9 x 1.5)	1								
28	945-016-0	Allen Head Bolt (M3 x 15)	7 ●								
29	945-112-0	Allen Head Bolt (M5 x 12)	2								
30	945-114-0	Allen Head Bolt (M5 x 14)	4								
31	945-222-0	Allen Head Bolt (M6 x 22)	4								



10000 SE PINE  
PORTLAND, OR 97216  
503-254-6600  
FAX 503-255-2615

When ordering spare parts, please specify tool type, part number, and description.

### FOOTNOTES

● = Handle Assembly Components