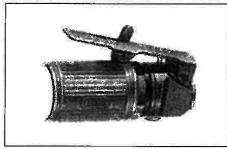
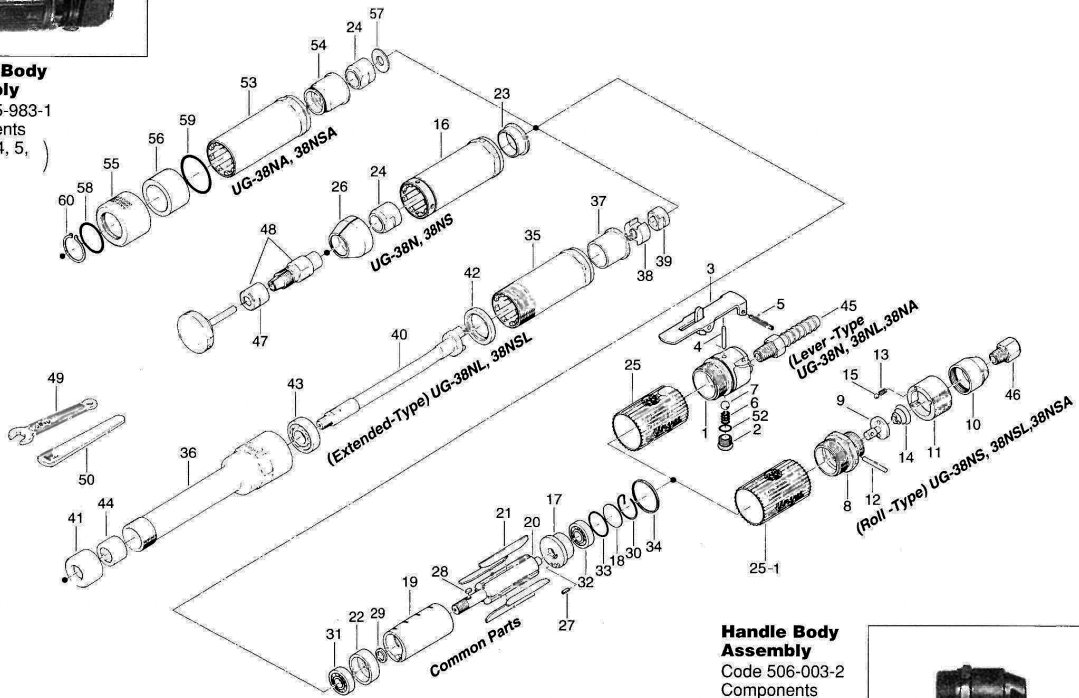


UG-38N SERIES DIE GRINGERS

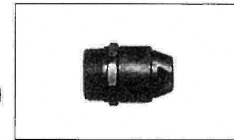
EXPLODED VIEW



Handle Body Assembly
Code 505-983-1
Components
(#1, 2, 3, 4, 5, 6, 7, 52)



Handle Body Assembly
Code 506-003-2
Components
(#8, 9, 10, 11, 12, 13, 14, 15)



PARTS LIST — FOR REFERENCE ONLY

Index Number	Part Number	Description	Qty.
505-983-1 HANDLE BODY ASSEMBLY (UG-38N, UG-38NL, UG-38NA)			
1	504-014-0	Handle Body	1
2	601-108-1	Valve Plug	1
3	505-914-2	Self-Locking Valve Lever Assembly	1
4	970-239-0	Pin (H) (3 x 21)	1
5	973-124-0	Roll Pin (3 x 24)	1
6	976-114-0	Spring (6 x 18)	1
7	981-207-0	Ball (9/32)	1
52	990-904-0	O-Ring (SNS-6)	1
506-003-2 HANDLE BODY ASSEMBLY (UG-38NS, UG-38NSL, UG-38NSA)			
8	506-014-2	Handle Body	1
9	506-100-2	Valve	1
10	506-090-2	Air Inlet Bushing	1
11	506-015-2	Valve Handle	1
12	971-224-0	Pin (3 x 24)	1
13	976-022-0	Spring (3 x 5.5)	1
14	977-080-0	Cone Spring (7 x 18 x 10)	1
15	981-002-0	Ball (1/8)	1
COMMON PARTS			
17	505-285-2	Rear Plate	1
18	505-291-1	Rear Plate Spacer	1
19	505-286-1	Cylinder	1

Index Number	Part Number	Description	Qty.
20	505-287-1	Rotor	1
21	505-288-1	Blade	4
22	505-289-1	Front Plate	1
25	505-767-2	Casing Cover	1
25-1	505-767-1	Casing Cover	1
27	973-006-0	Roll Pin (2 x 6)	1
28	974-005-0	Key (3 x 6)	1
29	975-023-0	Spacer (11.8 x 8 x 2.6)	1
30	978-219-0	Snap Ring (22 x 1.2)	1
31	982-015-0	Ball Bearing (608)	1
32	982-021-0	Ball Bearing (626)	1
33	990-914-0	O-Ring (SNS-16)	1
34	990-923-0	O-Ring (SNS-26)	1
PARTS FOR UG-38N, -38NS			
16	505-025-1	Casing	1
23	505-395-1	Outer Ring	1
24	505-396-1	Inner Ring	1
26	505-782-1	Exhaust Deflector	1
PARTS FOR UG-38NL, -38NSL			
35	507-025-1	Casing	1
36	507-033-1	Wheel Spindle Casing	1
37	507-395-1	Outer Ring	1
38	507-366-2	Clutch	1
39	507-338-1	Clutch Stand	1
40	507-390-3	Wheel Spindle	1

Index Number	Part Number	Description	Qty.
41	507-074-1	Wheel Spindle Casing	1
42	975-236-0	Spacer (30 x 21 x 4)	1
43	982-101-0	Ball Bearing (6001)	1
44	988-290-0	Needle Roller Bearing (TA-1215)	1
PARTS FOR UG-38NA, -38NSA			
53	505-025-6	Casing	1
54	505-395-6	Outer Ring	1
24	505-396-1	Inner Ring	1
55	505-782-6	Exhaust Deflector	1
56	507-099-7	Filter (UG-38NA)	1
	507-099-0	Filter (UG-38NSA)	1
57	505-296-6	Front Plate Spacer	1
58	990-917-0	O-Ring (SNS-24)	1
59	990-925-0	O-Ring (SNS-32)	1
60	979-119-0	Outer Snap Ring (22)	1
ACCESSORIES			
46	942-114-0	Connecting Screw (1/4 x NPT1/4)	1
47	505-412-1	Chuck Nut	1
48	923-510-0	Collect Chuck Assembly (3)	1
	923-512-0	Collect Chuck Assembly (6)	1
	923-515-0	Collect Chuck Assembly (1/8)	1
	923-516-0	Collect Chuck Assembly (1/4)	1
49	936-514-0	Spanner (14)	1
50	939-101-0	Spanner (55 x 17.5 x 120)	1



10000 SE PINE
PORTLAND, OR 97216
503-254-6600
FAX 503-255-2615

When ordering spare parts, please specify tool type, part number, and description.

FOOTNOTES