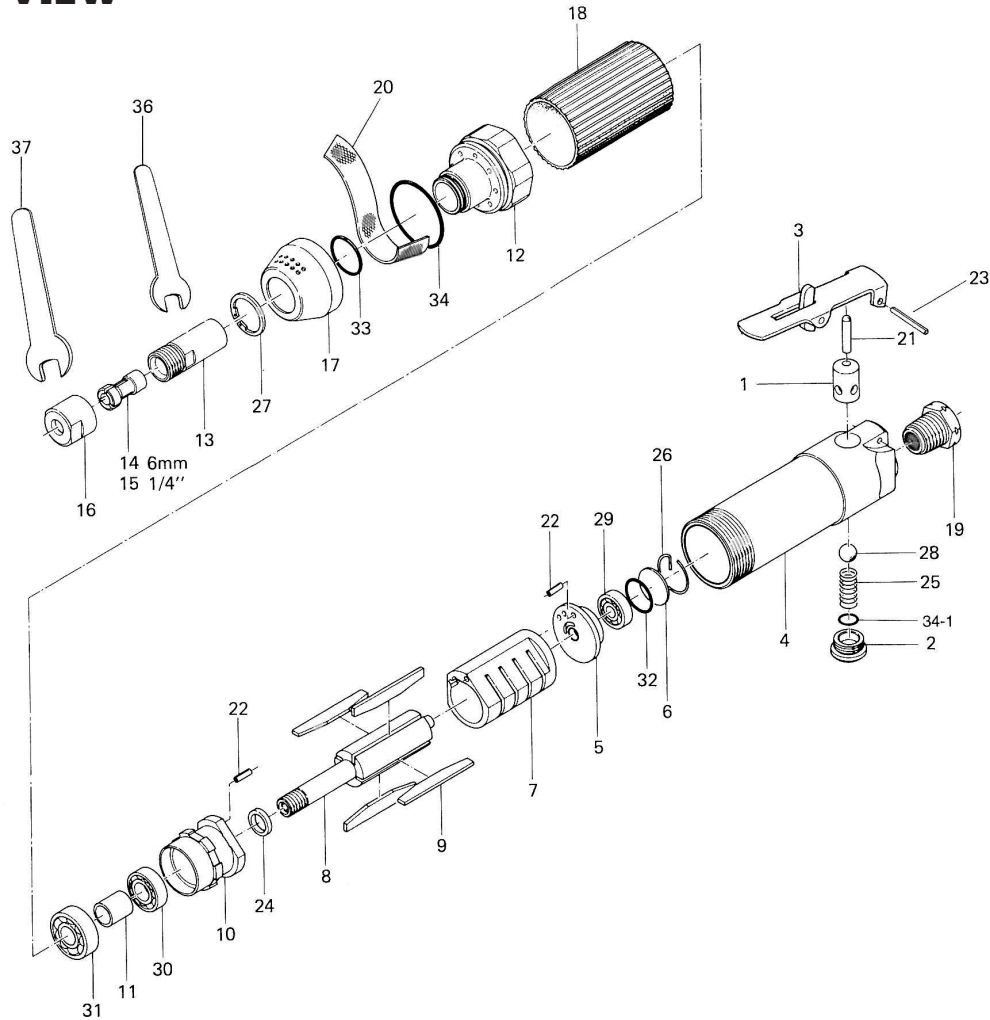


UG-45H DIE GRINDER

EXPLODED VIEW



PARTS LIST — FOR REFERENCE ONLY

Index Number	Part Number	Description	Qty.	Index Number	Part Number	Description	Qty.	Index Number	Part Number	Description	Qty.
1	509-102-2	Valve Seat	1 ●	16	516-412-4	Chuck Nut	1	32	990-914-0	O-Ring (SNS-16)	1
2	203-108-1	Valve Plug	1 ●	17	516-782-2	Exhaust Deflector	1	33	990-918-0	O-Ring (SNS-20)	1
3	500-914-7	Self-Locking Valve Lever Assembly	1 ●	18	516-842-5	Casing Cover	1	34	990-926-0	O-Ring (SNS-35)	1
4	516-025-4	Casing	1 ●	19	516-091-3	Air Inlet Bushing	1 ●	34-1	990-908-0	O-Ring (SNS-10)	1
5	516-285-3	Rear Plate	1	20	516-835-4	Filter	1	ACCESSORIES			
6	505-291-1	Rear Plate Spacer	1	21	970-322-0	Pin (H) (4 x 22)	1 ●	36	936-514-0	Spanner (14)	1
7	516-286-3	Cylinder	1	22	973-110-0	Roll Pin (3 x 10)	2	37	936-519-0	Spanner (19)	1
8	516-287-3	Rotor	1	23	973-020-0	Roll Pin (2 x 20)	1 ●	38	939-104-0	Allen Wrench (5)	1
9	512-288-0	Blade	4	24	975-042-0	Spacer (13.8 x 10 x 3)	1				
10	516-289-3	Front Plate	1	25	976-232-0	Spring (9.5 x 18)	1 ●				
11	516-305-3	Rotor Collar	1	26	978-219-0	Snap Ring (22 x 1.2)	1				
12	516-065-3	Casing Front Cover	1	27	979-361-0	Snap Ring (ISTW-20)	1				
13	516-390-3	Wheel Spindle	1	28	981-210-0	Ball (3/8")	1 ●				
14	923-170-0	Collet Chuck (6 mm)	1	29	982-021-0	Ball Bearing (626)	1				
15	923-171-0	Collet Chuck (1/4")	1	30	982-100-0	Ball Bearing (6000)	1				
				31	982-901-0	Ball Bearing (6900)	1				

FOOTNOTES

● = Items in Casing 516-004-3



10000 SE PINE
PORTLAND, OR 97216
503-254-6600
FAX 503-255-2615

When ordering spare parts, please specify tool type, part number, and description.