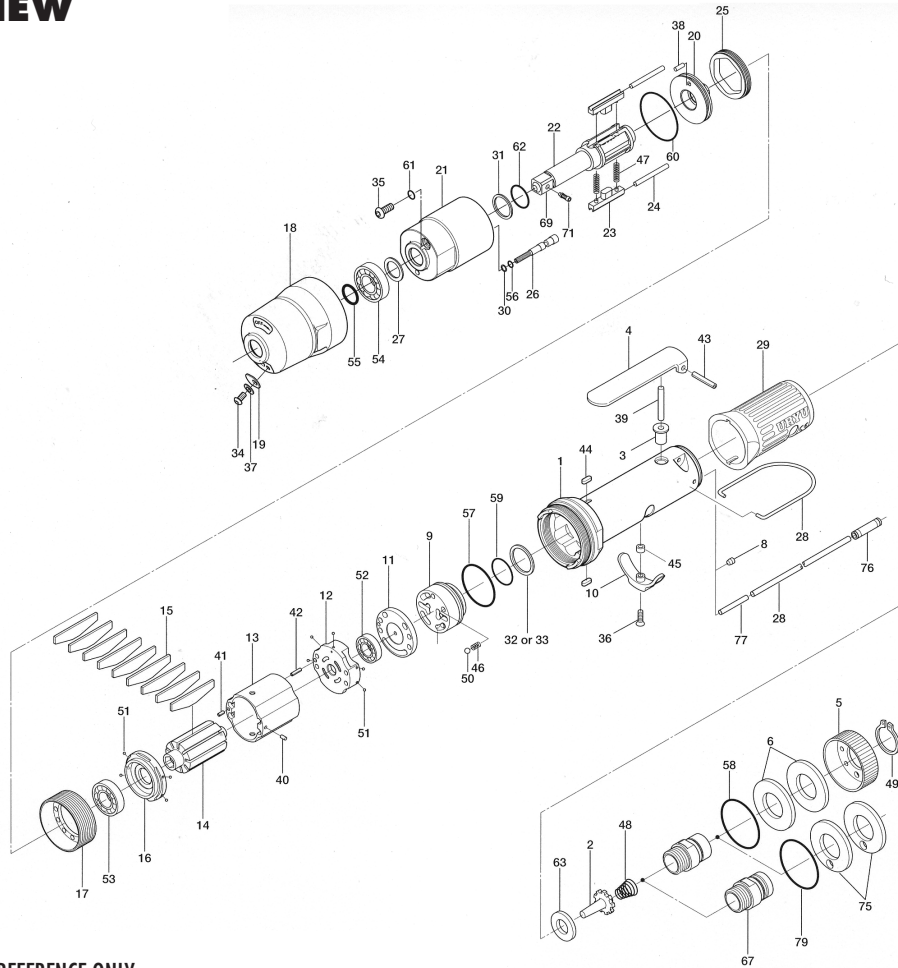


UL-70S SERIES OIL-PULSE WRENCHES

EXPLODED VIEW



PARTS LIST — FOR REFERENCE ONLY

Index Number	Part Number	Description	Qty.	Index Number	Part Number	Description	Qty.	Index Number	Part Number	Description	Qty.
1	107-025-0	Handle	1	27	178-327-0	Anvil Front Spacer	1	51	981-045-0	Ball (1.5)	9
2	259-100-0	Valve	1	28	191-790-1	Suspension Bail	1	52	982-014-0	Ball Bearing (607)	1
3	161-103-3	Valve Rod Bushing	1	29	129-842-6	Handle Cover	1	53	982-902-0	Ball Bearing (6901)	1
4	196-107-7	Valve Lever	1	30	944-001-0	Supporting Ring (2.1 x 4 x 1)	1	54	982-922-0	Ball Bearing (6901ZZ)	1
5	128-782-8	Exhaust Cover	1	31	944-212-0	Supporting Ring (12 x 16 x 1.5)	1	55	990-012-0	O-Ring (P12.5)	1
6	128-835-8	Filter (K200)	2	32	944-216-0	Supporting Ring (14 x 20 x 1.85)	1	56	990-320-0	O-Ring (ARP-568-003)	1
67	128-091-8	Air Inlet Bushing	1	33	944-218-0	Supporting Ring (14 x 20 x 1.9)	1	57	990-331-0	O-Ring (JW1530-21)	1
8	147-064-6	Plug	1	34	945-935-0	Hexagon Round Head Bolt (M3 x 6)	1	58	990-603-0	O-Ring (28.5 x 1.3)	1
9	106-210-8	Reverse Valve	1	35	945-942-0	Hexagon Round Head Bolt (M4 x 6)	1	59	990-912-0	O-Ring (SNS-14)	1
10	161-212-3	Reverse Lever	1	36	948-426-0	Allen Flush Head Screw (M3 x 12)	1	60	990-917-0	O-Ring (SNS-24)	1
11	128-291-8	Rear Plate Spacer	1	37	961-008-0	Flat Washer (3)	1	61	990-971-0	O-Ring (SNS-3) (NOK)	1
12	129-285-2	Rear Plate	1	38	970-147-0	Pin(H) (2.5 x 5)	1	62	992-020-0	SU-Ring (Q12) (NTN)	1
13	129-286-6	Cylinder	1	39	970-221-0	Pin(H) (3 x 21.5)	1	63	996-424-0	Packing (16 x 9 x 2)	1
14	129-287-6	Rotor	1	40	971-102-0	Pin (2 x 3.8)	1	69	891-553-1	Anvil Assembly (P)	1
15	129-288-6	Blade (PC)	9	41	973-008-0	Roll Pin (2 x 8)	1	71	891-300-1	Socket Snap Pin	1
16	128-289-8	Front Plate	1	42	973-018-0	Roll Pin (2 x 18)	1	PARTS FOR (TM) TYPE			
17	143-036-8	Hammer Casing Connector	1	43	973-122-0	Roll Pin (3 x 22)	1	75	851-053-1	Filter (K200)	2
18	107-439-5	Front Casing	1	44	974-008-0	Key (3 x 8)	2	76	933-250-0	One-Touch Connector (SLS-04)	1
19	143-243-8	Regulator Valve Cover	1	45	975-004-0	Spacer (5.5 x 3.1 x 2.7)	1	77	935-240-0	Nylon Tube (18NY)	1
20	143-901-8	Rear Liner Plate	1	46	976-006-0	Spring (3 x 5) (0.4)	1	78	935-350-0	Polyurethane Hose (F-1504)	1
21	143-902-8	Liner	1	47	976-788-0	Spring (3.5 x 25) (0.45) WPC	2	79	990-333-0	O-Ring (JW1530-23)	1
22	143-319-8	Anvil	1	48	977-227-0	Cone Spring (9 x 12 x 25) (0.8)	1	ACCESSORIES			
23	147-440-6	Driving Blade	2	49	979-358-0	Inner Snap Ring (ISTW-17)	1	939-091-0	Allen Wrench 1.5 (80 x 20)	1	
24	147-974-6	Roller (2.5 x 28)	2	50	981-002-0	Ball (1/8)	1	939-107-0	Allen Wrench 2	1	
25	143-906-8	Liner Casing Cover	1								
26	143-970-8	Relief Valve	1								

FOOTNOTES



10000 SE PINE
PORTLAND, OR 97216
503-254-6600
FAX 503-255-2615

When ordering spare parts, please specify
tool type, part number, and description.