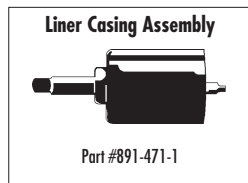
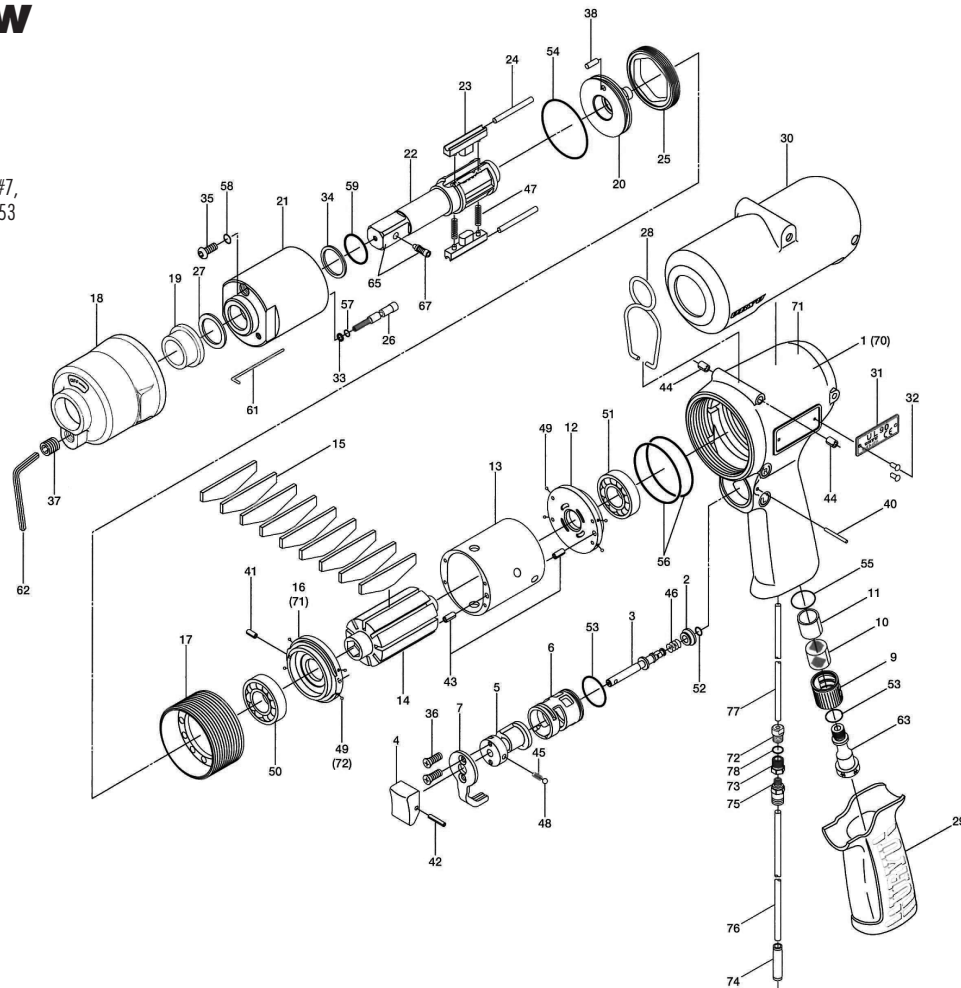


UL-90 SERIES OIL-PULSE WRENCHES

EXPLODED VIEW

143-981-9 Handle Assembly for UL-90
 852-544-1 Handle Assembly for UL-90TM
 Components: #1 or #71, #2, #3, #4, #5, #6, #7,
 #63, #36, #40, #42, #45, #46, #48, #52, #53



PARTS LIST — FOR REFERENCE ONLY

Index Number	Part Number	Description	Qty.	Index Number	Part Number	Description	Qty.	Index Number	Part Number	Description	Qty.				
1	143-025-9	Handle	1	27	147-327-9	Anvil Front Spacer	1	51	982-949-0	Ball Bearing (16001)	1 ■				
2	147-100-8	Valve	1	28	174-790-0	Suspension Bail	1	52	990-306-0	O-Ring (ARP568-004)(H)	1				
3	147-104-8	Valve Rod	1	29	147-842-2	Handle Cover	1	53	990-914-0	O-Ring (SNS-16)	2				
4	147-107-2	Valve Lever	1	30	143-840-9	Casing Protector	1	54	990-915-0	O-Ring (SNS-29)	1 ●				
5	147-210-8	Reverse Valve	1	31	143-924-9	Metal Tag	1	55	990-919-0	O-Ring (SNS-22)	1				
6	147-211-8	Reverse Valve Bushing	1	32	930-205-0	Screw (No.0 x 2.6)	2	56	990-932-0	O-Ring (SNS-42)	2 ■				
7	147-212-8	Reverse Lever	1	33	944-002-0	Supporting Ring (2.6 x 4.5x1)	1 ●	57	990-970-0	O-Ring (SNS-2)	1 ●				
9	147-780-9	Exhaust Stack	1	34	944-215-0	Supporting Ring (16 x 19.9 x 1.5)	1 ●	58	990-971-0	O-Ring (SNS-3) (NOK)	1 ●				
10	147-042-8	Silencer	1	35	945-942-0	Hexagon Round Head Bolt (M4 x 6)	1	59	992-021-0	SU-Ring (Q16) (NTN)	1 ●				
11	147-835-8	Filter (K100)	1 ■	36	948-423-0	Allen Flush Head Screw (M3 x 6)	2	63	147-091-8	Air Inlet Bushing	1				
12	143-285-9	Rear Plate	1	37	966-099-0	Allen Head Plug (NPT 1/16)	1	65	891-556-1	Anvil (OP-P)	1				
13	143-286-9	Cylinder	1	38	970-204-0	Pin (H) (3 x 6)	1	67	891-304-1	Socket Pin Assembly (1/2)	1				
14	147-287-8	Rotor	1	40	971-125-0	Pin (2 x 25)	1	PARTS FOR (TM) TYPE							
15	147-288-8	Blade (PC)	9 ■	41	973-006-0	Roll Pin (2 x 6)	1	71	852-526-1	Handle	1				
16	143-289-9	Front Plate	1	42	973-014-0	Roll Pin (2 x 14)	1	72	850-610-1	Connecting Screw	1				
17	143-036-9	Front Casing Connector	1	43	973-068-0	Roll Pin (2.5 x 8)	2	73	933-250-0	One-Touch Connector (SLS-04)	1				
18	143-439-9	Front Casing	1	44	973-308-0	Roll Pin (5 x 8)	2	74	935-240-0	Nylon Tube (18NY)	1				
19	147-328-8	Anvil Bushing	1	45	976-006-0	Spring (3 x 5) (0.4)	1	75	935-350-0	Polyurethane Hose (F1504)	1				
20	143-901-9	Rear Liner Plate	1	46	976-643-0	Spring (7.5 x 9.7) (0.9)	2	ACCESSORIES							
21	143-902-9	Liner	1	47	976-794-0	Spring (3.8 x 33) (0.5) WPC	2 ●	61	939-091-0	Allen Wrench (1.5 mm)	1				
22	143-319-9	Anvil (OP-0)	1	48	981-002-0	Ball (1/8)	1	62	939-105-0	Allen Wrench (4 mm)	1				
23	147-440-9	Driving Blade	2	49	981-045-0	Ball (1.5)	8	FOOTNOTES							
24	147-974-8	Roller Pin (2.5 x 30)	2	50	982-903-0	Ball Bearing (6902)	1 ■	● = Items in Pulse Repair Kit UL-90-PRK							
25	143-906-9	Liner Casing Cover	1									■ = Items in Repair Kit UL-90-RK			
26	143-970-9	Relief Valve	1												



10000 SE PINE
 PORTLAND, OR 97216
 503-254-6600
 FAX 503-255-2615

When ordering spare parts, please specify
 tool type, part number, and description.

FOOTNOTES

- = Items in Pulse Repair Kit UL-90-PRK
- = Items in Repair Kit UL-90-RK

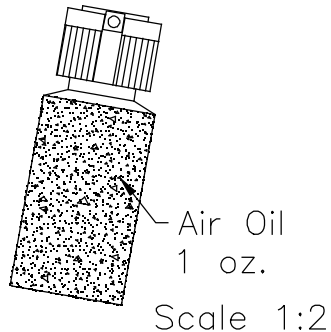
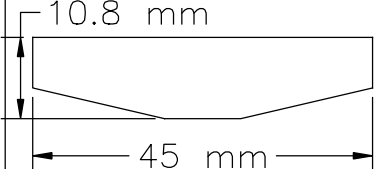
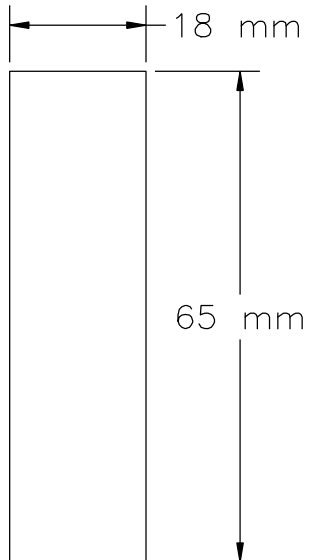
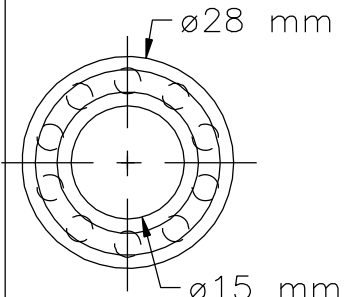
UL-90-PRK

(Kit contains following parts)

#/#	Bin Location	Part Number	QTY	Description	Material	Drawing / Scketch
1	PA10	944-002-0	1	Support Ring 2.6x4.5x1	Teflon-White	
2	PA10	944-215-0	1	Support Ring 16x19.9x1.5	Teflon-White	
3	PA1J	976-794-0	2	Spring 3.8x33.0	Spring wire ø.50 mm	
4	PA1B	990-915-0	1	O-Ring (SNS-29) 29x33x2	Buna-Black	
5	PA1C	990-970-0	1	O-Ring (SNS-2)	Buna-Black	
6	PA1C	990-971-0	1	O-Ring (SNS-3) (NOK)	Buna-Black	
7	PA10	992-021-0	1	SU-Ring (Q-19) (NTN) 16x21x2.5	Buna-Black	
8	PA1J	976-785-0	2	Spring 3.75 X 27	Spring wire ø.50 mm	

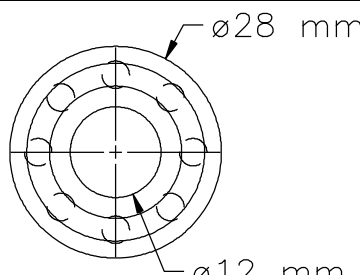
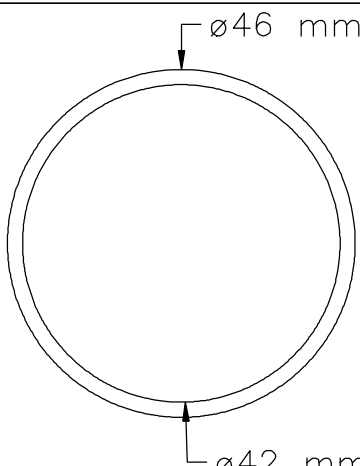
UL-90-RK

(Kit contains following parts)

#/#	Bin Location	Part Number	QTY	Description	Material	Drawing / Scketch
1	SEWALL	AM-OIL	1	Oil Air Motor 1 oz. fluid	Plastic Container	
2	PA2B	147-288-8	9	Blade(PC) 10.8x45x1.85	Phenolic-Fiber	
3	PA3A	147-835-8	1	Filter K100 18x65x1.60	Sendered Plastic	
4	PA2I	982-903-0	1	Ball Bearing(6902) 15x28x7	Bearing Steel	

UL-90-RK

(Kit contains following parts)

#/#	Bin Location	Part Number	QTY	Description	Material	Drawing / Scketch
5	PA2I	982-949-0	1	Ball Bearing(16001) 12x28x7	Bearing Steel	 <p>Technical drawing of a ball bearing. The drawing shows a cross-section of the bearing with an outer diameter of 28 mm and an inner diameter of 12 mm. The bearing is labeled as a 12x28x7 ball bearing.</p>
6	PA1B	990-932-0	2	O-Ring (SNS-42) 42x46x2	Buna-Black	 <p>Technical drawing of an O-ring. The drawing shows a cross-section of the O-ring with an outer diameter of 46 mm and an inner diameter of 42 mm. The O-ring is labeled as SNS-42.</p>