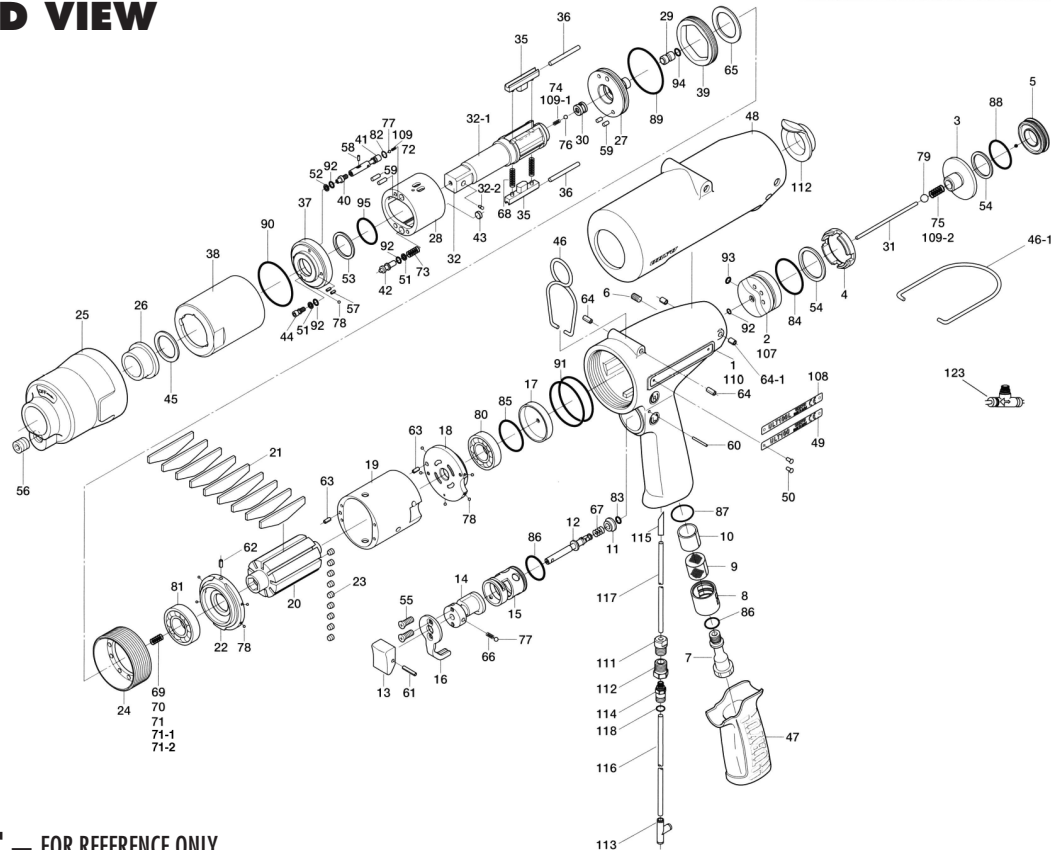


# ULT-100 SERIES OIL-PULSE WRENCHES

## EXPLODED VIEW



## PARTS LIST — FOR REFERENCE ONLY

Index Number	Part Number	Description	Qty.	Index Number	Part Number	Description	Qty.	Index Number	Part Number	Description	Qty.
1	148-025-3	Handle	1	41	148-970-2	Relief Valve	1	79	981-245-0	Ball (4.5 MM)	1
2	148-253-3	Shut-Off Valve Bushing	1	42	147-972-8	Accumulator	1	80	982-949-0	Ball Bearing (16001)	1
3	148-254-2	Shut-Off Valve	1	43	148-908-2	Accumulator Cover	1	81	982-950-0	Ball Bearing (16002)	1
4	147-684-8	Cushion Spacer	1	44	194-742-3	Oil Plug	1	82	990-320-0	O-Ring (ARP568-003)	1
5	147-019-8	Valve Cover	1	45	147-327-9	Anvil Front Spacer	1	83	990-306-0	O-Ring (ARP568-004)(H)	1
6	150-108-5	Valve Plug	1	46	174-790-0	Suspension Ring	1	84	990-331-0	O-Ring (JW1530-21)	1
7	148-091-3	Air Inlet Bushing	1	46-1	191-790-1	Suspension Ring	1	85	990-334-0	O-Ring (JW1530-24)	1
8	147-780-9	Exhaust Stack	1	47	147-842-2	Handle Cover	1	86	990-914-0	O-Ring (SNS-16)	2
9	147-042-8	Silencer 0.2 x 30	>either/or	48	148-840-2	Casing Cover	1	87	990-919-0	O-Ring (SNS-22)	1
	18F-042-9	Silencer 0.18 x 60	>either/or	49	148-924-2	Name Plate	1	88	990-923-0	O-Ring (SNS-26)	1
10	148-835-2	Filter (K50)	1	50	930-205-0	Driver Rivet (No.0 x 2.6)	2	89	990-929-0	O-Ring (SNS-36)	1
	18F-835-8	Filter (K50)	>either/or	51	944-003-0	Supporting Ring (3 x 5 x 1)	2	90	990-928-0	O-Ring (SNS-38)	1
11	147-100-8	Valve	1	52	944-203-0	Supporting Ring (3.1 x 5.1)	1	91	990-938-0	O-Ring (SNS-48)	2
12	147-104-8	Valve Rod	1	53	944-215-0	Supporting Ring (1.6 x 19.9 x 1.5)	1	92	990-970-0	O-Ring (SNS-2)	4
13	147-107-2	Valve Lever	1	54	944-222-0	Supporting Ring (20 x 27.5 x 1.5)	2	93	990-971-0	O-Ring (SNS-3) (NOK)	1
14	147-210-8	Reverse Valve	1	55	948-423-0	Allen Flush Head Screw (M3 x 6)	2	94	990-305-0	O-Ring (ARP568-003)	1
15	147-211-8	Reverse Valve Bushing	1	56	966-099-0	Allen Head Plug 1/16 (GM Type)	1	95	992-021-0	SU-Ring (Q16)(NTN)16	1
16	147-212-8	Reverse Lever	1	57	969-450-0	Pin (G) (3 x 8)	2	<b>FOR ULT-100L</b>			
17	147-291-9	Rear Plate Spacer	1	58	970-091-0	Pin (H) (2 x 4.5)	1	107	148-253-3	Shut-Off Valve Bushing	1
18	148-285-2	Rear Plate	1	59	970-205-0	Pin (H) (3 x 7)	4	108	148-924-3	Name Plate	1
19	148-286-2	Cylinder	1	60	971-125-0	Pin (2 x 25)	1	109	976-883-0	Spring (2.8 x 7.6)	1
20	148-287-2	Rotor	1	61	973-014-0	Roll Pin (2 x 14)	1	109-1	976-815-0	Spring (2.4 x 5.4)	1
21	148-288-2	Blade (PC)	9	62	973-006-0	Roll Pin (2 x 6)	1	109-2	976-816-0	Spring (4.6 x 12)	1
22	148-289-2	Front Plate	1	63	973-068-0	Roll Pin (2.5 x 8)	2	<b>FOR (TM) TYPE</b>			
23	148-064-2	Plug	9	64	973-308-0	Roll Pin (5 x 8)	2	110	852-572-1	Handle	1
24	148-036-2	Hammer Casing Protector	1	64-1	973-307-0	Roll Pin (5 x 6)	2	111	851-967-1	Plug	1
25	148-439-2	Front Casing	1	65	975-780-0	Adjusting Spacer (21 x 13 x 1)	1	112	851-955-1	Connecting Screw	1
26	147-328-8	Anvil Bushing	1	66	976-006-0	Spring (3 x 5)	1	113	909-442-0	Quick Exhaust (AQ240F)	1
27	148-901-2	Rear Liner Plate	1	67	976-643-0	Spring (7.5 x 9.7)(0.9)	1	114	933-281-0	One Touch Connector	1
28	148-902-2	Liner	1	68	976-783-0	Spring (4.3 x 36)(0.55) WPC	2	115	935-240-0	Nylon Tube (18NY)	1
29	145-546-6	Piston	1	69	976-967-0	Spring (3.3 x 17.7)(0.45) Standard	1	116	935-350-0	Polyurethane Hose (F-1504)	1
30	130-929-4	Check Valve Cover	1	70	976-857-0	Spring (3.3 x 17)(0.45) Weak	1	117	935-358-0	Polyurethane Hose (TU-0212)	1
31	148-130-2	Operating Rod (2.1 x 65.9)	1	71	976-662-0	Spring (3.3 x 18)(0.45) Middle Weak	1	118	990-320-0	O-Ring (ARP563-003)	1
32	891-562-1	Anvil Assembly (P)	1	71-1	976-968-0	Spring (3.3 x 18.2)(0.45) Middle Strong	1	<b>ACCESSORIES</b>			
32-1	148-319-3	Anvil (O)	1	71-2	976-771-0	Spring (3.3 x 16.5)(0.5) n = 13.5 Strong	1	120	939-091-0	Allen Wrencl (1.5)	1
32-2	891-304-1	Socket Pin Assy	1	72	976-998-0	Spring (2.9 x 7.5)(0.45) n = 7.5	1	121	939-105-0	Allen Wrench (4)	1
35	148-440-2	Driving Blade	2	73	976-699-0	Spring (4.8 x 29.5)(0.6)	1	122	940-114-0	Air Hose Nipple NPT1/4 x 3/8	1
36	148-974-2	Roller Pin (3 x 35)	2	74	976-971-0	Spring (2.4 x 5)(0.35) n = 5.5	1	123	909-449-0	Speed Controller	1
37	148-904-2	Front Liner Plate	1	75	976-813-0	Spring (4.5 x 12)	1	<b>FOOTNOTES</b>			
38	148-905-2	Liner Casing	1	76	981-001-0	Ball (3/32)	1	● = Items in Pulse Repair Kit ULT-100-PRK			
39	148-906-2	Liner Casing Cover	1	77	981-002-0	Ball (1/8)	2	■ = Items in Repair Kit ULT-100-RK			
40	174-907-2	Relief Valve Spindle	1	78	981-045-0	Ball (1.5)	10	▲ = Items in Pulse Repair Kit ULT-100L-PRK			



10000 SE PINE  
PORTLAND, OR 97216  
503-254-6600  
FAX 503-255-2615

When ordering spare parts, please specify  
tool type, part number, and description.

### FOOTNOTES

- = Items in Pulse Repair Kit ULT-100-PRK
- = Items in Repair Kit ULT-100-RK
- ▲ = Items in Pulse Repair Kit ULT-100L-PRK