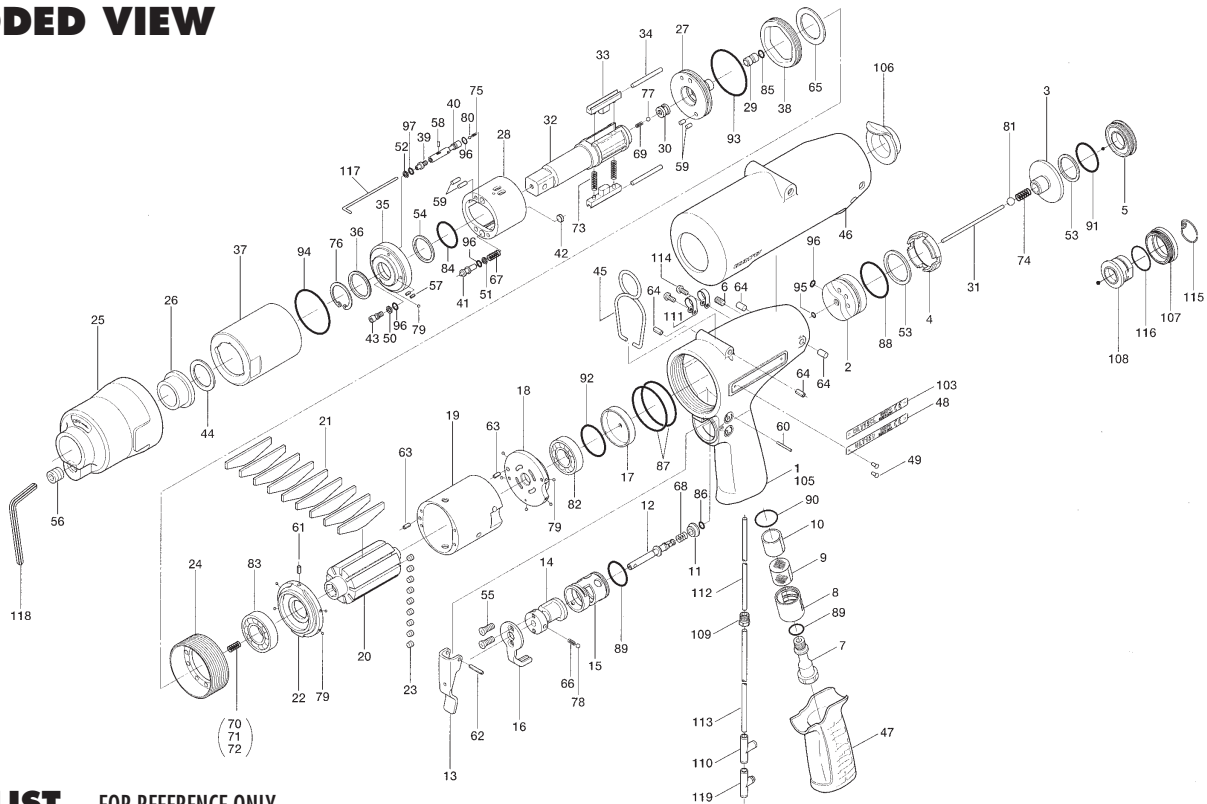


ULT-150 SERIES OIL-PULSE WRENCHES

EXPLODED VIEW



PARTS LIST — FOR REFERENCE ONLY

Index Number	Part Number	Description	Qty.	Index Number	Part Number	Description	Qty.	Index Number	Part Number	Description	Qty.
1	130-025-6	Handle	1	41	130-972-4	Accumulator	1	81	981-245-0	Ball (4.5)	1
2	130-253-2	Shut-Off Valve Bushing	1	42	130-908-4	Accumulator Cover	1	82	982-951-0	Ball Bearing (16003)	1 ■
3	130-254-2	Shut-Off Valve	1	43	194-742-3	Oil Plug	1	83	982-905-0	Ball Bearing (6904)	1 ■
4	130-684-2	Bumper Spacer	1	44	130-327-5	Anvil Rear Spacer	1	84	990-170-0	O-Ring (ARP-568-120) (NTN)	1 ●
5	130-019-2	Valve Cover	1	45	174-790-0	Suspension Ring	1	85	990-305-0	O-Ring (ARP568-003) (KS)	1 ●
6	150-108-5	Valve Plug	1	46	130-840-4	Casing Protector	1	86	990-306-0	O-Ring (ARP568-004) (H)	1
7	130-091-2	Air Inlet Bushing	1	47	130-842-2	Handle Cover	1	87	990-316-0	O-Ring (ARP-568-035)	2 ■
8	130-780-2	Exhaust Stack	1	48	130-924-4	Name Plate	1	88	990-332-0	O-Ring (JW1530-22)	1
9	130-042-2	Silencer	1	49	930-205-0	Driver Rivet (No.0 x 2.6)	2	89	990-916-0	O-Ring (SNS-18)	2
10	130-835-2	Filter (K100)	1 ■	50	944-003-0	Supporting Rmg (3 x 5 x 1)	1 ●	90	990-921-0	O-Ring (SNS-22.4)	1
11	130-100-2	Valve	1	51	944-005-0	Supporting Ring (4.2 x 6 x 1)	1 ●	91	990-922-0	O-Ring (SNS-28)	1
12	130-104-2	Valve Rod	1	52	944-205-0	Supporting Ring (5.1 x 7 x 1)	1 ●	92	990-929-0	O-Ring (SNS-36)	1
13	130-107-2	Valve Lever	1	53	944-223-0	Supporting Ring (22 x 29.5 x 1.5)	2	93	990-936-0	O-Ring (SNS-45)	1 ●
14	130-210-2	Reverse Valve	1	54	944-225-0	Supporting Ring (25.2 x 29.4 x 1)	1 ●	94	990-937-0	O-Ring (SNS-46)	1 ●
15	130-211-2	Reverse Valve Bushing	1	55	948-423-0	Allen Flush Head Screw (M3 x 6)	2	95	990-970-0	O-Ring (SNS-2) (NOK)	1
16	130-212-2	Reverse Lever	1	56	966-099-0	Allen Head Plug NPT1/16	1	96	990-971-0	O-Ring (SNS-3) (NOK)	4 ●
17	130-291-4	Rear Plate Spacer	1	57	969-450-0	Pin (G) (3 x 8)	2	97	990-972-0	O-Ring (SNS-4) (NOK)	1 ●
18	130-285-4	Rear Plate	1	58	970-093-0	Pin (H) (2 x 6)	1	PARTS FOR ULT-150L			
19	130-286-4	Cylinder	1	59	970-206-0	Pin (H) (3 x 8)	4	75-1	977-048-0	Cone Spring	1
20	130-287-4	Rotor	1	60	971-126-0	Pin (H) (2 x 26)	1	103	130-924-0	Name Plate	1
21	130-288-2	Blade	9 ■	61	973-006-0	Roll Pin (2 x 6)	1	PARTS FOR (TM)-TYPE			
22	130-289-4	Front Plate	1	62	973-120-0	Roll Pin (3 x 20)	1	105	851-086-1	Handle (4 x 5 x 11.4) (0.7) n=7.5	1
23	130-064-4	Plug	9	63	973-212-0	Roll Pin (4 x 12)	2	106	851-060-1	Cap	1
24	130-036-4	Hammer Casing Connector	1	64	973-308-0	Roll Pin (5 x 8)	4	107	851-069-1	Valve Cover	1
25	130-439-4	Front Casing	1	65	975-812-0	Adjusting Spacer (30 x 17 x T)	1	108	851-070-1	Valve Spacer	1
26	163-328-4	Anvil Bushing	1	66	976-006-0	Spring (3 x 5)	1	109	850-610-1	Connecting Screw	1
27	130-901-4	Rear Liner Plate	1	67	976-605-0	Spring (5.8 x 33) (1.0)	1 ●	110	909-442-0	Quick Exhaust (AQ240F-04-00)	1
28	130-902-4	Liner	1	68	976-643-0	Spring (7.5 x 9.7) (0.9)	1	111	929-050-0	Coupling	2
29	145-546-6	Piston	1	69	976-645-0	Spring (2.4 x 5) (0.3)	1 ●	112	935-240-0	Nylon Tube (18NY)	1
30	130-929-4	Check Valve Cover	1	70	976-650-0	Spring (3.3 x 16) (0.45) (standard)	1	113	935-350-0	Polyurethane Hose (F1504)	1
31	130-130-4	Operating Rod (2.1 x 77)	1	71	976-688-0	Spring (3.3 x 17.5) (0.4) (weak)	1	114	957-006-0	Cross Pan Head Screw (M3-6)	2
32	130-319-4	Anvil	1	72	976-662-0	Spring (3.3 x 18) (0.45) (strong)	1	115	978-204-0	Snap Ring (20 x 1) (3TM)	1
33	130-440-4	Driving Blade	2	73	976-795-0	Spring (4.3 x 40.5) (0.6) WPC	2 ●	116	990-923-0	O-Ring (SNS-26)	1
34	130-974-2	Roller (3 x 40)	2	74	976-802-0	Spring (4.5 x 14) (0.5) WPC	1	ACCESSORIES			
35	130-904-4	Front Liner Plate	1	75	977-054-0	Cone Spring (4 x 5 x 11.4) (0.7)	1 ●	117	939-109-0	Allen Wrench (2 mm)	1
36	163-807-5	Spacer	1	76	979-207-0	Snap Ring (30)	1	118	939-105-0	Allen Wrench (4 mm)	1
37	130-905-4	Liner Casing	1	77	981-001-0	Ball (3/32)	1	119	909-449-0	Speed Controller (AS1001F-04)	1
38	130-906-4	Liner Casing Setter	1	78	981-002-0	Ball (1/8)	1	FOOTNOTES			
39	175-907-9	Relief Valve Spindle	1	79	981-045-0	Ball (1.5)	10	● = Items in Pulse Repair Kit ULT-150-PRK			
40	130-970-4	Relief Valve	1	80	981-155-0	Ball (3.5)	1	■ = Items in Repair Kit ULT-150-RK			



10000 SE PINE
PORTLAND, OR 97216
503-254-6600
FAX 503-255-2615

When ordering spare parts, please specify
tool type, part number, and description.

FOOTNOTES

- = Items in Pulse Repair Kit ULT-150-PRK
- = Items in Repair Kit ULT-150-RK