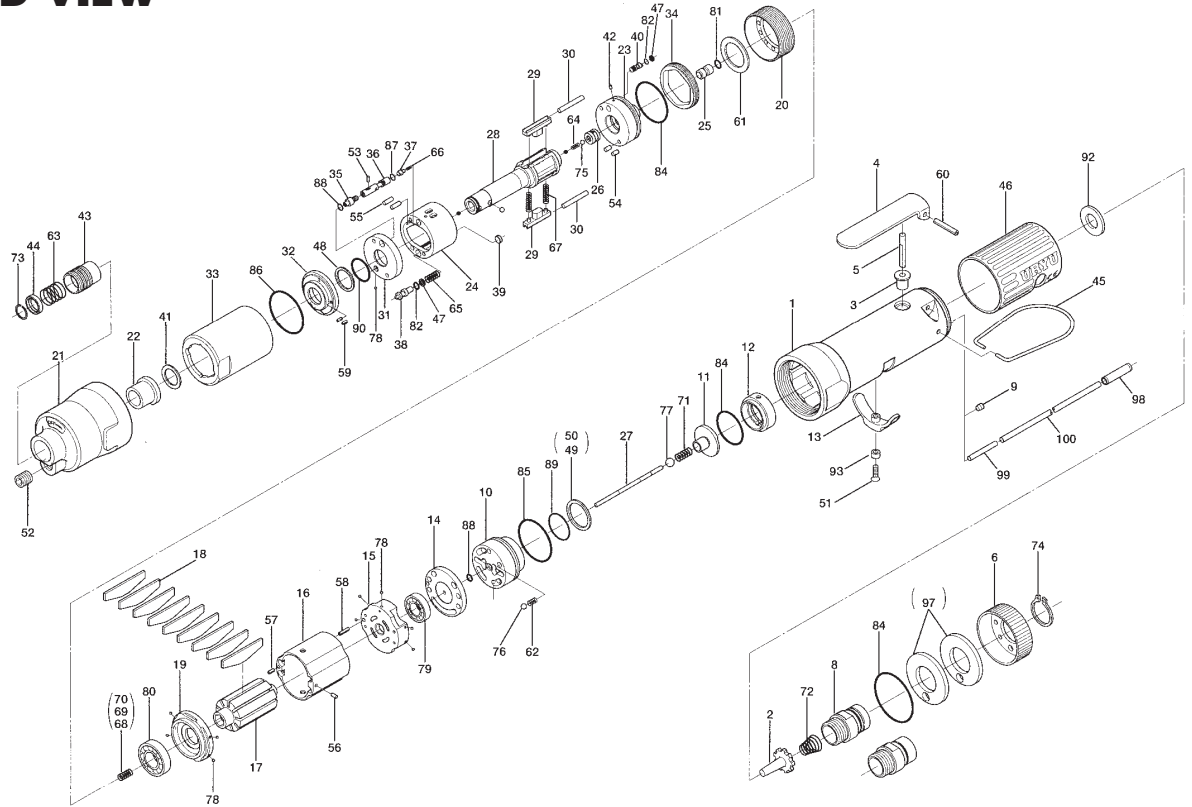


ULT-30SD OIL-PULSE WRENCHES

EXPLODED VIEW



PARTS LIST — FOR REFERENCE ONLY

Index Number	Part Number	Description	Qty.	Index Number	Part Number	Description	Qty.	Index Number	Part Number	Description	Qty.
1	128-025-5	Casing	1	35	145-907-6	Relief Valve Spindle	1	69	976-688-0	Spring (3.3 x 17.5) (0.4)	1
2	259-100-0	Valve	1	36	144-970-0	Relief Valve	1	70	976-661-0	Spring (3.3 x 17) (0.4) (Black)	1
3	161-103-3	Valve Rod Bushing	1	37	144-270-0	Valve	1	71	977-043-0	Cone Spring (4.1 x 4.7 x 9) (0.45)	1
4	196-107-7	Valve Lever	1	38	145-972-6	Accumulator	1	72	977-227-0	Cone Spring (9 x 12 x 25) (0.8)	1
5	128-104-8	Valve Rod	1	39	145-908-7	Accumulator Cover	1	73	978-117-0	Snap Ring (11.7 x 1)	1
6	128-782-5	Exhaust Cover (Red)	1	40	178-742-0	Oil Plug	1	74	979-358-0	Snap Ring (ISTW-17)	1
7	128-835-5	Filter (K200)	2	41	145-327-7	Anvil Front Spacer	1	75	981-001-0	Ball (2/32)	1
8	128-091-8	Air Inlet Bushing	1	42	150-064-5	Plug	1	76	981-002-0	Ball (1/8)	1
9	147-064-6	Plug	1	43	011-351-1	Bit Sleeve (1/8)	1	77	981-003-0	Ball (5/32)	1
10	128-253-5	Shut-Off Valve Bushing	1	44	011-352-1	Bit Spacer	1	78	981-045-0	Ball (1.5)	10
11	145-254-6	Shut-Off Valve	1	45	010-790-1	Suspension Ring	1	79	982-014-0	Ball Bearing (607)	1
12	128-684-8	Bumper Spacer	1	46	128-842-4	Casing Cover (Blue)	1	80	982-901-0	Ball Bearing (6900)	1
13	161-212-3	Reverse Lever	1	47	944-002-0	Supporting Ring (2.6 x 4.5 x 1)	2 ●	81	990-305-0	O-Ring (ARP568-003) (KS)	1 ●
14	128-291-5	Rear Plate Spacer	1	48	944-212-0	Supporting Ring (12 x 16 x 1.5)	1 ●	82	990-320-0	O-Ring (ARP568-003)	2 ●
15	128-285-5	Rear Plate	1	49	944-216-0	Supporting Ring (14 x 20 x 1.85)	1	84	990-329-0	O-Ring (JW1530-19)	3 ●
16	128-286-5	Cylinder	1	50	944-218-0	Supporting Ring (14 x 20 x 1.9)	1	85	990-331-0	O-Ring (JW1530-21)	1
17	144-287-0	Rotor	1	51	948-426-0	Allen Flush Head Screw (M3 x 12)	1	86	990-605-0	O-Ring (25 x 1.45)	1 ●
18	144-288-0	Blade (PC)	9	52	966-099-0	Allen Head Plug (NPT1/16) GDL	1	87	990-621-0	O-Ring (3.8 x 1.8 x 1.0)	1 ●
19	128-289-5	Front Plate	1	53	970-013-0	Pin (H) (1.5 x 4)	1	88	990-900-0	O-Ring (SNS-2)	2 ●
20	144-036-0	Hammer Casing Connector	1	54	970-130-0	Pin (H) (2.45 x 4.5)	2	89	990-914-0	O-Ring (SNS-16)	1
21	144-439-0	Front Casing	1	55	970-131-0	Pin (H) (2.45 x 9.5)	2	90	992-020-0	SU-Ring (Q12) (NTN)	1 ●
22	190-328-6	Anvil Bushing	1	56	971-102-0	Pin (2 x 3.8)	1	92	996-424-0	Packing (16 x 9 x 2)	1
23	144-901-0	Rear Liner Plate	1	57	973-008-0	Roll Pin (2 x 8)	1	ACCESSORIES			
24	144-902-0	Liner	1	58	973-018-0	Roll Pin (2 x 18)	1	93	975-004-0	Spacer (5.5 x 3.1 x 2.7)	1
25	145-546-6	Piston	1	59	973-040-0	Roll Pin (1.5 x 5)	2	95	939-091-0	Allen Wrench (1.5 mm)	1
26	145-929-6	Check Valve Cover	1	60	973-122-0	Roll Pin (3 x 22)	1	96	939-105-0	Allen Wrench (4 mm)	1
27	128-130-8	Operating Rod (2.1 x 59)	1	61	975-655-0	Adjusting Spacer (15 x 9 x 1)	1	PARTS FOR (TM) TYPE			
28	144-350-0	Driver Anvil	1	62	976-006-0	Spring (3 x 5 x 0.4)	1	97	851-065-1	Filter (K200)	2
29	144-440-0	Driving Blade	2	63	976-327-0	Spring (13.5 x 11) (0.9)	1	98	909-442-0	Quick Exhaust (AQ240F-04-00)	1
30	145-974-0	Roller (2.5 x 21)	2	64	976-651-0	Spring (2.4 x 5) (0.23)	1 ●	99	935-240-0	Nylon Tube (18NY)	1
31	144-973-0	Liner Casing Spacer	1	65	976-674-0	Spring (4.3 x 14) (0.55)	1 ●	100	935-350-0	Polyurethane Hose (F1504)	1
32	144-904-0	Front Liner Plate	1	66	976-756-0	Spring (2.8 x 6.9) (0.35)	1 ●	101	909-449-0	Speed Controller (AS1001F-04)	1
33	144-905-0	Liner Casing	1	67	976-782-0	Spring (3.3 x 16) (0.4)WPC	2 ●				
34	144-906-0	Liner Casing Cover	1	68	976-650-0	Spring (3.3 x 16) (0.45)	1				

FOOTNOTES

● = Items in Pulse Repair Kit ULT-30SD-PRK



10000 SE PINE
PORTLAND, OR 97216
503-254-6600
FAX 503-255-2615

When ordering spare parts, please specify
tool type, part number, and description.