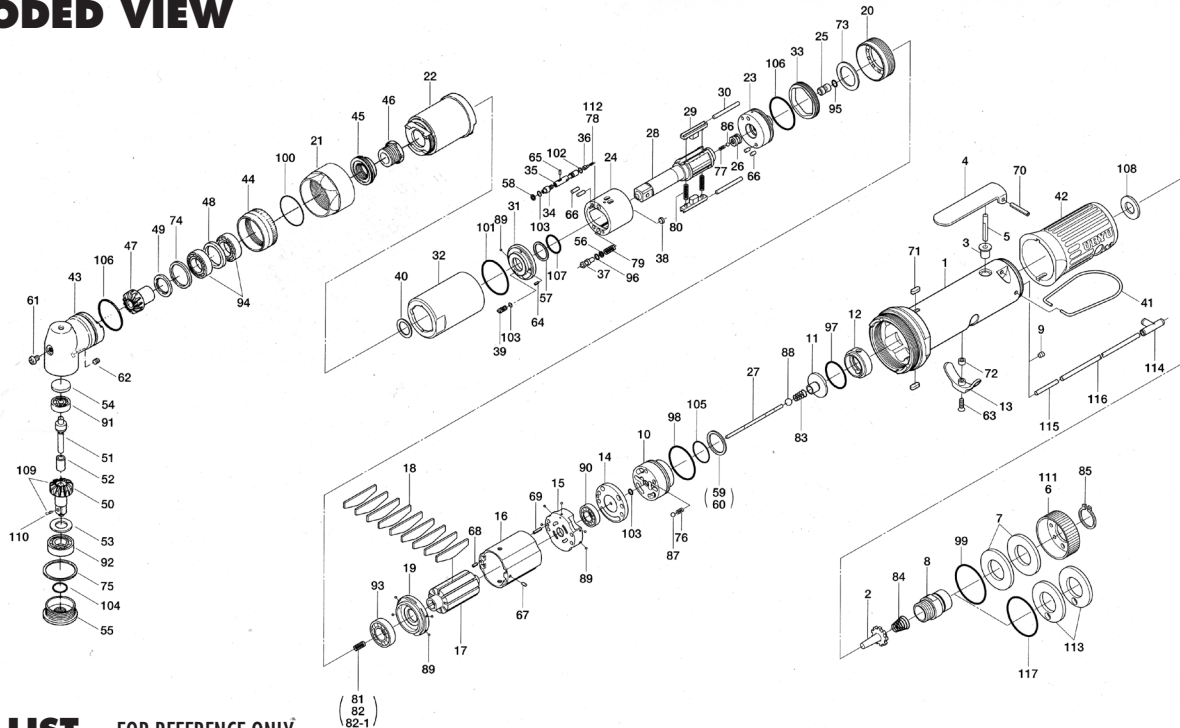


ULT-70C SERIES OIL-PULSE WRENCH

EXPLODED VIEW



PARTS LIST — FOR REFERENCE ONLY

Index Number	Part Number	Description	Qty.	Index Number	Part Number	Description	Qty.	Index Number	Part Number	Description	Qty.
1	127-025-7	Casing	1	44	127-382-7	Hammer Casing Nut	1	84	977-227-0	Cone Spring (9 x 12 x 25) (0.8)	1
2	259-100-0	Valve	1	45	160-797-7	Ball Bearing Setting Spindle	1	85	979-358-0	Inner Snap Ring (ISTW-17)	1
3	161-103-3	Valve Rod Bushing	1	46	160-799-7	Ball Bearing Setting Spindle Nut	1	86	981-001-0	Ball (3/32)	1
4	196-107-7	Valve Lever	1	47	179-420-6	Driving Gear	1	87	981-002-0	Ball (1/8)	1
5	128-104-8	Valve Rod	1	48	179-423-6	Driving Gear Bushing Spacer	1	88	981-003-0	Ball (5/32)	1
6	128-782-8	Exhaust Cover	1	49	179-425-6	Driving Gear Spacer	1	89	981-045-0	Ball (1.5 mm)	10
7	128-835-8	Filter (K200)	2	50	020-430-1	Driven Gear (0)	1	90	982-014-0	Ball Bearing (607)	1
8	128-091-8	Air Inlet Bushing	1	51	188-431-7	Driven Gear Spindle	1	91	982-021-0	Ball Bearing (626)	1
9	147-064-6	Filler	1	52	020-432-1	Driven Gear Collar	1	92	982-101-0	Ball Bearing (6001)	1
10	129-253-2	Shut-Off Valve Bushing	1	53	020-433-1	Driven Gear Spacer	1	93	982-902-0	Ball Bearing (6901)	1
11	145-254-6	Shut-Off Valve	1	54	562-391-7	Spindle Upper Plate	1	94	982-904-0	Ball Bearing (6903)	2
12	129-684-6	Bumper spacer	1	55	179-488-6	Angle Casing Cover	1	95	990-305-0	O-Ring (ARP568-003) (KS)	1
13	161-212-3	Reverse Lever	1	56	944-002-0	Supporting Ring (2.6 x 4.5 x 1)	1	96	990-320-0	O-Ring (ARP568-003)	1
14	128-291-8	Rear Plate Spacer	1	57	944-013-0	Supporting Ring (P12)	1	97	990-329-0	O-Ring (JW1530-19)	1
15	129-285-2	Rear Plate	1	58	944-203-0	Supporting Ring (3.1 x 5.1)	1	98	990-331-0	O-Ring (JW1530-21)	1
16	129-286-7	Cylinder	1	59	944-216-0	Supporting Ring (14 x 20 x 1.85)	1	99	990-603-0	O-Ring (28.5 x 1.3)	1
17	129-287-6	Rotor	1	60	944-218-0	Supporting Ring (14 x 20 x 1.9)	1	100	990-605-0	O-Ring (25 x 1.45)	1
18	129-288-6	Blade (PC)	9	61	945-949-0	Hexagon Round Head Bolt (M5 x 6)	1	101	990-334-0	O-Ring (JW1530-24)	1
19	128-289-8	Front Plate	1	62	954-206-0	Allen Head Cone Point Screw (M5 x 6)	1	102	990-621-0	O-Ring (3.8 x 1.8 x 1.0)	1
20	127-036-7	Hammer Casing Connector	1	63	948-426-0	Allen Flush Head Screw (M3 x 12)	1	103	990-900-0	O-Ring (SNS-2)	3
21	180-081-4	Front Case Nut	1	64	969-449-0	Pin (G) (3 x 6)	1	104	990-910-0	O-Ring (SNS-12.5)	1
22	127-439-7	Front Casing	1	65	970-013-0	Pin (H) (1.5 x 4)	1	105	990-914-0	O-Ring (SNS-16)	1
23	147-901-6	Rear Liner Plate	1	66	970-204-0	Pin (H) (3 x 6)	1	106	990-923-0	O-Ring (SNS-26)	2
24	147-902-6	Liner	1	67	971-102-0	Pin (2 x 3.8)	1	107	992-020-0	SU-Ring (Q12) (NTN)	1
25	145-546-6	Piston	1	68	973-008-0	Roll Pin (2 x 8)	1	108	996-424-0	Urethane Packing (16 x 9 x 2)	1
26	145-929-6	Check Valve Cover	1	69	973-018-0	Roll Pin (2 x 18)	1	109	891-346-1	Driven Gear Assembly	1
27	129-130-6	Operating Rod (2.1 x 70.7)	1	70	973-122-0	Roll Pin (3 x 22)	1	110	891-300-1	Socket Pin Assembly	1
28	147-319-6	Anvil	1	71	974-008-0	Key (3 x 8)	2				
29	147-440-6	Driving Blade	2	72	975-004-0	Spacer (5.5 x 3.1 x 2.7)	1				
30	147-974-6	Roller (2.5 x 28)	2	73	975-752-0	Adjusting Spacer (15 x 10 x t)	1				
31	147-904-6	Front Liner Plate	1	74	975-803-0	Adjusting Spacer (30 x 26 x t)	1				
32	147-905-6	Liner Casing	1	75	975-836-0	Adjusting Spacer (36 x 32.5 x t)	1				
33	147-906-6	Liner Casing Setter	1	76	976-006-0	Spring (3 x 5) (0.4)	1				
34	174-907-2	Relief Valve Spindle	1	77	976-645-0	Spring (2.4 x 5) (0.3)	1				
35	127-970-7	Relief Valve	1	78	976-604-0	Spring (2.9 x 7.1) (0.45)	1				
36	144-270-0	Pressure Regulator Valve	1	79	976-666-0	Spring (4.3 x 23) (0.55)	1				
37	145-972-6	Accumulator	1	80	976-788-0	Spring (3.5 x 25) (0.45) WPC	2				
38	145-908-7	Accumulator Cover	1	81	976-650-0	Spring (3.3 x 16) (0.45) Standard	1				
39	194-742-0	Oil Plug	1	82	976-697-0	Spring (3.3 x 17) (0.45) Standard-Strong	1				
40	145-327-7	Anvil Front Spacer	1								
41	191-790-1	Suspension Ring	1	82-1	976-661-0	Spring (3.3 x 17) (0.4) (Black) Weak	1				
42	129-842-7	Handle Protector	1								
43	160-441-7	Angle Casing	1	83	977-045-0	Cone Spring (4.0 x 4.6 x 9) (0.45)	1				

PARTS FOR ULT-70CL

111	129-782-0	Exhaust Cover	1
112	976-673-0	Spring (2.8 x 7.8) (0.4)	1

PARTS FOR (TM)-TYPE

113	851-053-1	Filter (K200)	2
114	909-442-0	Quick Exhaust (AQ240F-04-00)	1
115	935-240-0	Nylon Tube (18NY)	1
116	935-350-0	Polyurethane Hose (F-1504)	1
117	990-333-0	O-Ring (JW1530-23)	1

ACCESSORIES

118	939-108-0	Allen Wrench (1.5 mm)	1
119	909-449-0	Speed Controller (AST1001F-04)	1

FOOTNOTES



10000 SE PINE
PORTLAND, OR 97216
503-254-6600
FAX 503-255-2615

When ordering spare parts, please specify
tool type, part number, and description.