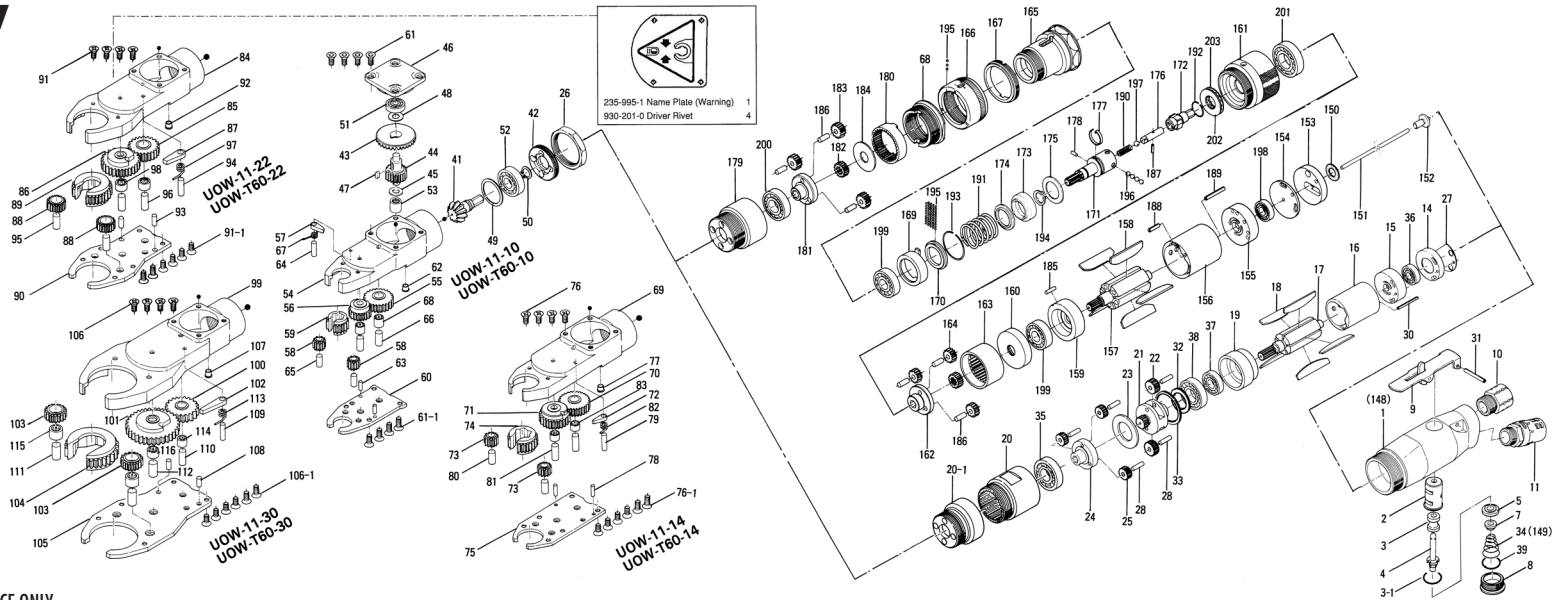


UOW-11 AND UOW-T60 SERIES OPEN-END WRENCHES

EXPLODED VIEW



235-984-0 Casing Assembly for UOW-11 Series

Components #1, #2, #3, #4, #4-1*, #5, #7, #8, #9, #10, #11, #31, #34, #39, #54
* Do not use #4-1 rod for UOW-11-30

242-984-0 Casing Assembly for UOW-T60 Series

Components #2, #3, #4, #4-1*, #5, #7, #8, #9, #10, #11, #31, #39, #54, #148, #149
* Do not use #4-1 rod for UOW-T60-30

PARTS LIST — FOR REFERENCE ONLY

Index Number	Part Number	Description	Qty.
CASING			
1	235-025-0	Casing for UOW-11 series	1
34	977-254-0	Cone Spring (10 x 15 x 16)	1
148	242-025-0	Casing for UOW-T series	1
149	977-256-0	Cone Spring (10 x 15 x 22)	1
2	235-101-0	Valve Bushing	1
3	235-210-0	Reverse Valve	1
4	241-104-0	Valve Rod	1
4-1	235-650-0	Rod (S1.6 x 30)	1
5	235-100-1	Valve	1
7	235-106-1	Valve Rod Cap	1
8	566-108-4	Valve Plug	1
9	508-914-4	Self-Locking Lever Assy	1
10	191-091-5	Air Inlet Bushing	1
11	235-885-0	Silencer Assembly	1
26	233-073-0	Gear Casing Lock Nut	1
31	973-124-0	Roll Pin (3 x 24)	1
39	990-914-0	O-Ring (SNS-16)	1
41	233-420-0	Driving Gear	1
42	878-161-1	Ball Bearing Support	1
43	233-430-0	Driven Gear	1
44	233-438-1	Driven Gear Spindle	1
45	470-344-8	Cam Spacer	1
46	233-072-0	Bevel Gear Casing Cover	1
47	974-766-0	Key (4 x 6)	1
48	975-749-0	Adjusting Spacer (13 x 6 x T)	1
49	975-802-0	Adjusting Spacer (26 x 22 x T)	1
50	979-107-0	Outer Snap Ring (10)	1
51	982-013-0	Ball Bearing (606)	1
52	982-100-0	Ball Bearing (6000)	1
53	988-340-0	Needle Roller Bearing (TLAM69)	1
54	990-593-0	O-Ring(5.1 x 1)	1
PARTS FOR UOW-11 SERIES			
14	233-291-0	Rear Plate Spacer	1
15	233-285-0	Rear Plate	1
16	233-286-0	Cylinder	1
17	233-287-0	Rotor	1
18	233-288-0	Blade	5

Index Number	Part Number	Description	Qty.
19	233-289-1	Front Plate	1
20	233-029-1	Gear Casing	1
20-1	233-037-0	Gear Casing Connector	1
21	233-480-0	First Gear Cage	1
22	233-470-0	First Planet Gear	2
23	233-483-0	Gear Cage Spacer	1
24	233-485-0	Second Gear Cage	1
25	233-471-0	Second Planet Gear	3
27	235-854-0	Casing Packing	1
28	972-092-0	Needle Roller (3 x 12)	5
30	973-024-0	Roll Pin (2 x 24)	1
32	975-167-0	Spacer (24 x 16 x 1)	1
33	975-257-0	Spacer (33.8 x 29 x 1.5)	1
35	982-101-0	Ball Bearing (6001)	1
36	982-401-0	Ball Bearing (EE-2)	1
37	982-402-0	Ball Bearing (EE-3)	1
38	982-403-0	Ball Bearing (EE-4)	1
PARTS FOR UOW-T60 SERIES			
150	996-422-0	Packing (16 x 10 x 1)	1
151	242-104-1	Valve Rod (2 x 96.5)	1
152	242-254-0	Shut off Valve	1
153	242-282-1	Casing Bushing	1
154	242-291-1	Rear Plate Spacer	1
155	242-285-0	Rear Plate	1
156	242-286-0	Cylinder	1
157	499-287-7	Rotor	1
158	609-288-1	Blade	5
159	499-289-7	Front Plate	1
160	499-296-7	Front Plate Spacer	1
161	499-036-7	Hammer Casing Connector	1
162	499-480-7	Gear Cage	1
163	499-465-7	First Internal Gear	1
164	499-470-7	First Planet Gear	3
165	499-028-7	Hammer Casing	1
166	499-264-7	Regulating Dial	1
167	499-257-7	Regulating Screw	1
168	499-382-7	Hammer Casing Nut	1
169	499-164-7	Spring Setter	1

Index Number	Part Number	Description	Qty.
170	499-379-7	Retainer	1
171	499-452-7	Cam Guide	1
172	242-346-1	Cam	1
173	499-375-8	Cam Ring	1
174	499-165-7	Spring Holder	1
175	499-682-7	Spacer	1
176	471-318-5	Pilot Pin	1
177	499-670-7	Cam Guide Band	1
178	499-764-7	Notch Pin	1
179	242-029-0	Gear Casing	1
180	242-466-0	Second Internal Gear	1
181	242-485-0	Second Gear Cage	1
182	499-445-3	Second Middle Gear	1
183	499-471-3	Second Planet Gear	3
184	499-483-7	Gear Cage Spacer	1
185	971-110-0	Pin (2 x 10)	1
186	972-111-0	Needle Roller (4 x 1)	6
187	969-470-0	Pin (E) (2 x 8)	1
188	973-112-0	Roll Pin (3 x 12)	1
189	973-124-0	Roll Pin (3 x 24)	1
190	976-244-0	Spring (4.5 x 18)	1
191	976-586-0	Spring (25 x 21)	1
192	978-150-0	Snap Ring (15 x 1)	1
193	978-289-0	Snap Ring (29 x 1)	1
194	979-107-0	Outer Snap Ring (10)	1
195	981-000-0	Ball (1/16)	52
196	981-003-0	Ball (5/32)	4
197	981-004-0	Ball (3/16)	1
198	982-035-0	Ball Bearing (698)	1
199	982-100-0	Ball Bearing (6000)	2
200	982-101-0	Ball Bearing (6001)	1
201	982-102-0	Ball Bearing (6002)	1
202	988-837-0	Thrust Needle Bearing (NTB 1226)	1
203	988-962-0	Thrust Washer (As 1226)	2
PARTS FOR UOW-11-10 & UOW-T60-10			
54	235-032-0	Bevel Gear Casing	1
55	233-445-5	Middle Gear	1
56	233-656-1	Ratchet Gear	1

Index Number	Part Number	Description	Qty.
57	233-562-0	Checker	1
58	233-450-0	Spur Gear	2
59	233-447-0	Gear Socket (10)	1
60	235-070-0	Gear Casing Cover	1
61	957-318-0	Cross Flush Head Screw (M4 x 8)	8
62	968-130-0	Grease Cup (3/16)	1
63	972-089-0	Needle Roller (3 x 8)	2
64	972-115-0	Roller Pin (4 x 16)	1
65	972-157-0	Needle Roller (5 x 12)	2
66	972-216-0	Needle Roller (6 x 16)	2
67	976-926-0	Spring (5.5 x 7)	1
68	988-380-0	Needle Roller Bearing (F68)	2
PARTS FOR UOW-11-14 & UOW-T60-14			
69	235-032-4	Bevel Gear Casing	1
70	233-445-5	Middle Gear	1
71	233-656-5	Ratchet Gear	1
72	233-562-4	Checker	1
73	233-450-4	Spur Gear	2
74	233-447-4	Gear Socket (14)	1
75	235-070-4	Gear Casing Cover	1
76	957-318-0	Cross Flush Head Screw (M4 x 8)	10
77	968-130-0	Grease Cup (3/16)	1
78	972-089-0	Needle Roller (3 x 8)	2
79	972-115-0	Roller Pin (4 x 16)	1
80	972-212-0	Needle Roller (6 x 12)	2
81	972-216-0	Needle Roller (6 x 16)	2
82	976-926-0	Spring (5.5 x 7)	1
83	988-380-0	Needle Roller Bearing (F68)	2
PARTS FOR UOW-11-22 & UOW-T60-22			
84	234-032-0	Bevel Gear Casing	1
85	233-445-5	Middle Gear	1

Index Number	Part Number	Description	Qty.
86	234-656-0	Ratchet Gear	1
87	234-562-0	Checker	1
88	234-450-0	Spur Gear	2
89	234-447-0	Gear Socket (22)	1
90	234-070-0	Gear Casing Cover	1
91	957-318-0	Cross Flush Head Screw (M4 x 8)	10
92	968-130-0	Grease Cup (3/16)	1
93	970-310-0	Pin (H) (4 x 10)	2
94	972-163-0	Needle Roller (5 x 18)	1
95	972-214-0	Needle Roller (6 x 14)	2
96	972-218-0	Needle Roller (6 x 18)	2
97	976-927-0	Spring (6.6 x 7.2)	1
98	988-380-0	Needle Roller Bearing (F68)	4
99	234-032-6	Bevel Gear Casing	1
PARTS FOR UOW-11-30 & UOW-T60-30			
100	233-445-5	Middle Gear	1
101	234-656-6	Ratchet Gear	1
102	234-562-4	Checker	1
103	234-450-6	Spur Gear	2
104	234-447-6	Gear Socket (30)	1
105	234-070-6	Gear Casing Cover	1
106	957-318-0	Cross Flush Head Screw (M4 x 8)	10
107	968-130-0	Grease Cup (3/16)	1
108	970-310-0	Pin (H) (4 x 10)	2
109	972-163-0	Needle Roller (5 x 18)	1
110	972-218-0	Needle Roller (6 x 18)	1
111	972-314-0	Needle Roller (8 x 14)	2
112	972-318-0	Needle Roller (8 x 18)	1
113	976-927-0	Spring (6.6 x 7.2)	1
114	988-380-0	Needle Roller Bearing (F68)	1
115	988-382-0	Needle Roller Bearing (F88)	2
116	988-383-0	Needle Roller Bearing (F810)	1

AIMCO
10000 SE PINE
PORTLAND, OR 97216
503-254-6600
FAX 503-255-2615

REVISED 03 / 15
When ordering spare parts, please specify tool type, part number, and description.