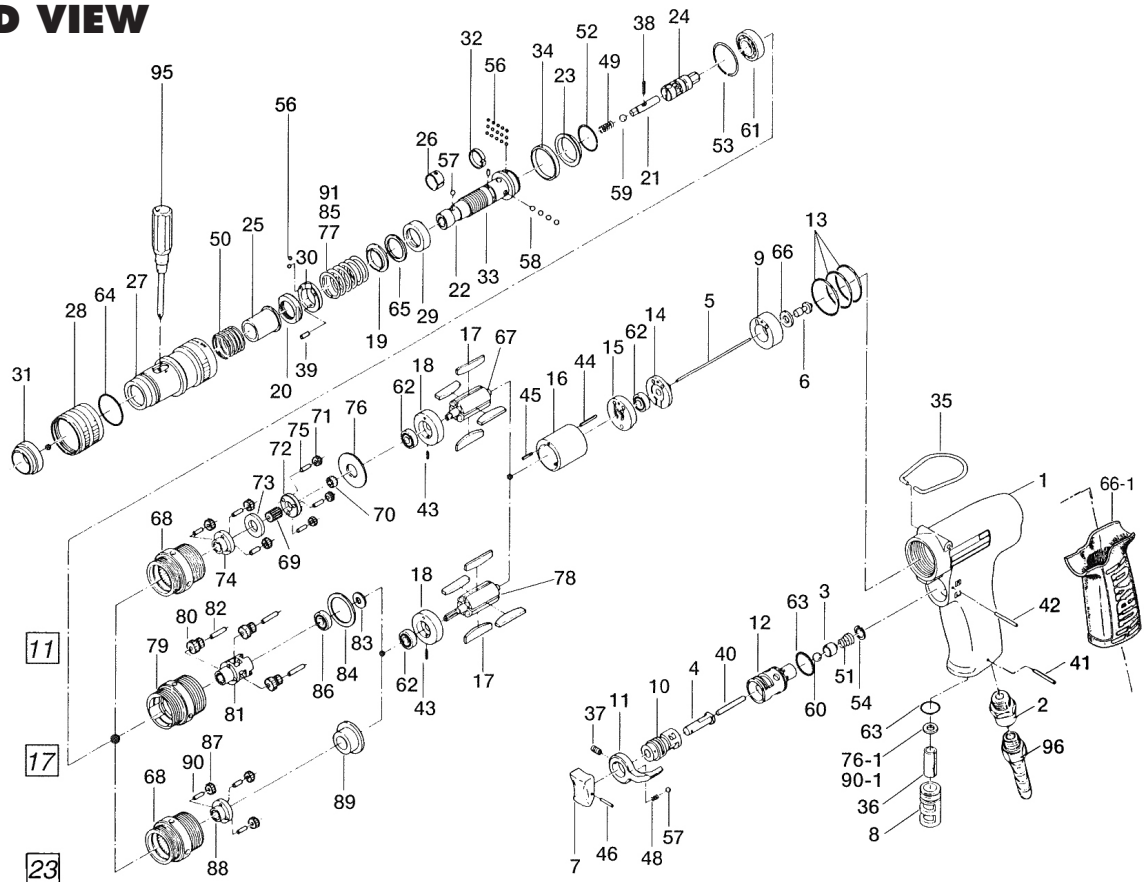


# US-LT31PB-11, -17, -23 PISTOL-TYPE SCREWDRIVERS

## EXPLODED VIEW



## PARTS LIST — FOR REFERENCE ONLY

Index Number	Part Number	Description	Qty.	Index Number	Part Number	Description	Qty.	Index Number	Part Number	Description	Qty.
1	442-025-5	Casing	1	39	970-091-0	Pin (H) (2 x 4.5)	1	76	975-178-0	Spacer (26 x 10 x 1.5)	1
2	480-091-8	Air Inlet Bushing	1	40	970-228-0	Pin (H) (3 x 28)	1	76-1	996 403-0	Urethane Packing (11.5 x 4 x 2)	1
3	480-100-9	Valve	1	41	971-120-0	Pin (2 x 20)	1	77	976-472-0	Spring (20.6 x 22) (Standard)	1
4	443-103-5	Valve Rod Bushing	1	42	971-123-0	Pin (2 x 23)	1	77-1	976 493-0	Spring (20.8 x 22) (Weak)	1
5	442-104-4	Valve Rod	1	43	973-001-0	Roll Pin (1.5 x 6)	1	77-2	976 471-0	Spring (19.4 x 22) (Weaker)	1
6	443 254-5	Shut-Off Valve	1	44	973-002-0	Roll Pin (1.5 x 15)	1	77-3	976-504-0	Spring (22 x 22) (Strong)	1
7	177-107-5	Valve Lever	1	45	973-003-0	Roll Pin (1.5 x 8)	1	<b>FOR US-LT31PB-17</b>			
8	480-780-8	Exhaust Stack	1	46	973-012-0	Roll Pin (2 x 12)	1	78	471-287-5	Rotor	1
9	442-282-5	Shut-Off Valve Bushing	1	48	976-006 0	Spring (3 x 5) (0.4)	1	79	462-029-6	Gear Casing	1
10	480-210-9	Reverse Valve	1	49	976-058 0	Spring (4.5 x 11) (0.4)	1	80	471-470-6	Planet Gear	3
11	098-212-5	Reverse Lever	1	50	976-450-0	Spring (18.5 x 10) (1.0)	1	81	471-480-5	Gear Cage	1
12	480-211-9	Reverse Valve Bushing	1	51	977-150-0	Cone Spring (6.8 x 8.5 x 8)	1	82	972-036-0	Roller Pin (2.5 x 15.8A)	3
13	990-917-0	O-Ring (SNS-24)	3	52	978-185-0	Snap Ring (19 x 1)	1	83	975-009-0	Spacer (9 x 5.2 x 0.3)	1
14	442-291-4	Rear Plate Spacer	1	53	978-229-0	Snap Ring (23 x 1)	1	84	975-188-0	Spacer (26 x 20 x 1.5)	1
15	471-285-7	Rear Plate	1	54	979-002-0	Inner Snap Ring (9)	1	76-1	996-403-0	Urethane Packing (1.5 x 4 x 2)	1
16	442-286-4	Cylinder	1	56	981-001-0	Ball (3/32)	17	85	976 493-0	Spring (20.8 x 22) (Standard)	1
17	471-288-0	Blade (PC)	4	57	981-002 0	Ball (1/8)	2	85-1	976-471-0	Spring (19.4 x 22) (Weak)	1
18	471-289-7	Front Plate	1	58	981-003 0	Ball (5/32)	4	85-2	976-472-0	Spring (21 x 22) (Strong)	1
19	471-164-8	Spring Holder	1	59	981-004 0	Ball (3/16)	1	86	987-013-0	Mini Ball Bearing (R-1350)	1
20	471-257-7	Regulator Screw	1	60	981-206-0	Ball (1/4)	1	<b>FOR US-LT31PB-23</b>			
21	471-318-5	Pilot Pin	1	61	982 901-0	Ball Bearing (6900)	1	78	471-287-5	Rotor	1
22	471-319-2	Anvil	1	62	987-041-0	Mini Ball Bearing (1350ZZ)	2	68	462-029-8	Gear Casing	1
23	462-334-7	Anvil Spacer	1	63	990-912-0	O-Ring (SNS-14)	2	87	471-470-3	Planet Gear	3
24	471-346-5	Cam	1	64	990 919-0	O Ring (SNS-22)	1	88	471-480-3	Gear Cage	1
25	471-351-6	Bit Sleeve	1	65	944-016-0	Back-Up Ring (P16)	1	89	471-483-3	Gear Cage Spacer	1
26	471-356-7	Bit Band	1	66	996-411-0	Packing (11 x 6 x 1)	1	90	972-033-0	Roller Pin (2.5 x 8)	3
27	462-369-7	Clutch Casing	1	66-1	174-842-8	Handle Cover	1	90-1	996-402-0	Urethane Packing (11.5 x 3.7 x 2)	1
28	471-370-7	Clutch Casing Sleeve	1	<b>FOR US-LT31PB-11</b>				91	976-471-0	Spring (19.4 x 22) (Standard)	1
29	471-375-8	Cam Ring	1	67	471-287-7	Rotor	1	91-1	976-493-0	Spring (20.8 x 22) (Strong)	1
30	471-562-7	Retainer	1	68	462-029-8	Gear Casing	1	<b>ACCESSORIES</b>			
31	471-567-6	Bushing	1	69	471-445-7	Middle Gear	1	95	939-402-0	Screwdriver (No.2)	1
32	471-670-7	Band	1	70	471-460-7	Rotor Gear	1	96	940-113-0	Air Hose Nipple (NPT1/4 x 1/4)	1
33	471-764-7	Notch Pin	1	71	471-471-7	Second Planet Gear	6				
34	462-397-7	Back-Up Spacer	1	72	471-480-7	First Gear Cage	1				
35	010-790-1	Suspension Ring	1	73	471-483-7	Gear Cage Spacer	1				
36	177-835-6	Filter (10 x 6 x 25)	1	74	471-485-7	Second Gear Cage	1				
37	952-106-0	Allen H. D. P. Screw (M4 x 6)	1	75	972-033-0	Roller Pin (2.5 x 8)	6				
38	969 470 0	Pin (2 x 8)	1								



10000 SE PINE  
 PORTLAND, OR 97216  
 503-254-6600  
 FAX 503-255-2615

When ordering spare parts, please specify  
 tool type, part number, and description.

### FOOTNOTES