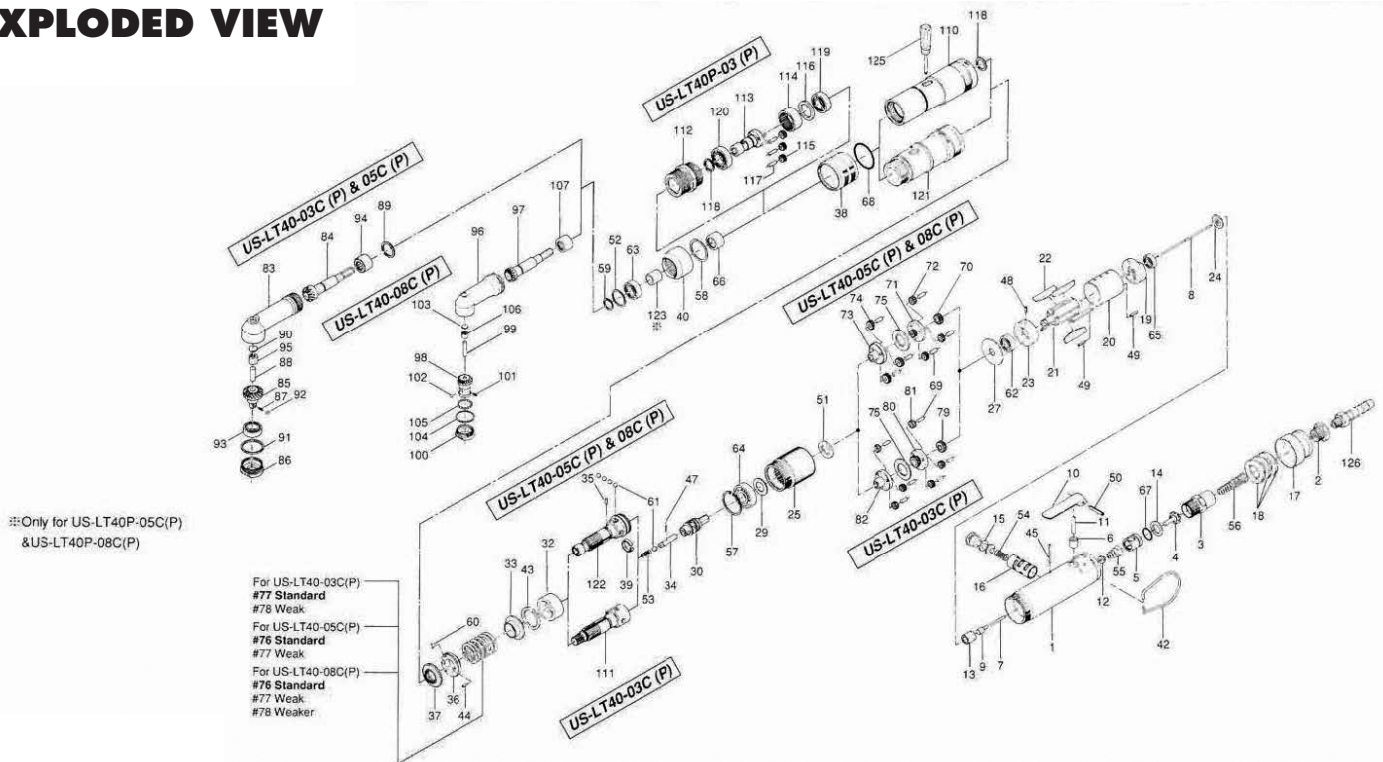


US-LT40-03C(P), -05C(P), & -08C(P) SCREWDRIVERS

EXPLODED VIEW



PARTS LIST — FOR REFERENCE ONLY

Index Number	Part Number	Description	Qty.	Index Number	Part Number	Description	Qty.	Index Number	Part Number	Description	Qty.				
1	461-025-6	Casing	1	51	975-106-0	Spacer (18.5 x 11 x 1)	1	87	976-346-0	Spring (2.9 x 6.35)	1				
2	480-091-8	Air Inlet Bushing	1	52	975-768-0	Adjusting Spacer (19 x 16.2 x 1)	1	88	972-216-0	Roller Pin (6 x 16)	1				
3	461-097-6	Air Inlet Connector	1	53	976-058-0	Spring (4.5 x 11)	1	89	975-113-0	Spacer (19 x 15 x 1.5)	1				
4	259-100-0	Valve	1	54	976-147-0	Spring (7 x 12)	1	90	975-593-0	Round Plate (10 x 1)	1				
5	461-102-6	Valve Bushing	1	55	977-071-0	Cone Spring (5.5 x 11.5 x 15)	1	91	975-787-0	Adjusting Spacer (26 x 24 x 1)	1				
6	553-103-1	Valve Rod Bushing	1	56	977-155-0	Cone Spring (7 x 10 x 35)	1	92	981-002-0	Ball (1/8)	1				
7	970-108-0	Pin (H) (2 x 26.8)	1	57	979-326-0	Inner Snap Ring (IRTW-26)	1	93	982-870-0	Ball Bearing (6801)	1				
8	463-104-7	Valve Rod	1	58	979-190-0	Outer Snap Ring (22)	1	94	988-008-0	Needle Roller Bearing NK10	1				
9	444-106-8	Valve Rod Cap	1	59	979-351-0	Inner Snap Ring (ISTW-10)	1	95	988-380-0	Needle Roller Bearing (F68)	1				
10	700-107-1	Valve Lever	1	60	981-001-0	Ball (3/32)	2	For US-LT40-08C(P)							
11	461-114-6	Valve Pin	1	61	981-004-0	Ball (3/16)	5	96	469-441-7	Angle Casing	1				
12	259-254-0	Shut-off Valve	1	62	982-063-0	Ball Bearing (606ZZ)	1	97	469-420-5	Driving Gear	1				
13	461-567-6	Bushing	1	63	982-035-0	Ball Bearing (698)	1	98	469-430-8	Driven Gear (P)	1				
14	996-424-0	Packing (16 x 9 x 2)	1	64	982-100-0	Ball Bearing (6000)	1	99	469-431-6	Driven Gear Spindle	1				
15	893-057-1	Reverse Valve Lock	1	65	987-039-0	Mini Ball Bearing (R1560ZZ)	1	100	469-488-5	Angle Head Casing Cover	1				
16	472-211-7	Reverse Valve Bushing	1	66	988-394-0	Needle Roller Bearing (1210)	1	101	976-346-0	Spring (2.9 x 6.35)	1				
17	472-782-7	Exhaust Deflector	1	67	990-911-0	O-Ring (SNS-12)	1	102	981-002-0	Ball (1/8)	1				
18	161-835-4	Filter (K-50)	3	68	990-923-0	O-Ring (SNS-26)	1	103	975-590-0	Round Plate (6.3 x 1)	1				
19	467-285-7	Rear Plate	1	76	976-515-0	Spring (22.7 x 28)	1	104	975-771-0	Adjusting Spacer (20 x 18 x 1)	1				
20	472-286-7	Cylinder	1	77	976-516-0	Spring (22.1 x 28)	1	105	981-000-0	Ball (1/16)	26				
21	472-287-7	Rotor	1	78	976-517-0	Spring (21.5 x 31)	1	106	988-090-0	Needle Roller Bearing (B-24)	1				
22	472-288-0	Blade (PC)	5	GEAR SECTION								107	469-421-5	Bushing	1
23	472-289-7	Front Plate	1	For US-LT40-03C(P)								PARTS FOR US-LT40-03C(P)			
24	461-291-6	Rear Plate Spacer	1	69	972-089-0	Roller Pin (3 x 8)	6	110	461-369-7	Clutch Casing	1				
25	472-029-7	Gear Casing	1	75	496-483-1	Gear Cage Spacer	1	111	461-654-7	Cam Guide	1				
27	472-807-7	Spacer	1	79	472-460-5	Rotor Gear	1	112	461-082-8	Connecting Screw	1				
29	461-344-6	Cam Retainer	1	80	472-480-5	First Gear Cage	1	113	462-319-9	Anvil	1				
30	472-346-5	Cam	1	81	472-470-5	First Planet Gear	6	114	462-466-9	Second Internal Gear	1				
32	472-375-7	Cam Ring	1	82	472-485-5	Second Gear Cage	1	115	462-471-9	Second Internal Gear Second Planet Gear3	1				
33	472-379-8	Retainer	1	For US-LT40-05C(P) & -08C(P)								116	462-487-9	Second Gear Cage Spacer	1
34	471-318-5	Pilot Pin	1	69	972-089-0	Roller Pin (3 x 8)	6	117	972-090-0	Roller Pin (3 x 10)	3				
35	471-764-7	Notch Pin	1	70	472-460-7	Rotor Gear	1	118	979-353-0	Inner Snap Ring (ISTW-12)	2				
36	472-562-8	Spring Holder	1	71	472-480-7	First Gear Cage	1	119	982-901-0	Ball Bearing (6900)	1				
37	472-257-8	Regulating Screw	1	72	472-470-7	First Planet Gear	3	120	982-902-0	Ball Bearing (6901)	1				
38	472-370-7	Clutch Casing Sleeve	1	73	472-485-7	Second Gear Cage	1	PARTS FOR US-LT40-05C(P) & -08C(P)							
39	471-670-7	Band	1	74	472-471-7	Second Planet Gear	3	121	461-369-8	Clutch Casing	1				
40	469-081-6	Locking Nut	1	75	496-483-1	Gear Cage Spacer	1	122	472-319-7	Anvil	1				
42	010-790-1	Suspension Ring	1	ANGLE HEAD SECTION								123	469-807-5	Spacer	1
43	944-019-0	Back-up Ring (P-19)	1	For US-LT40-03C(P) & -05C(P)								ACCESSORIES			
44	970-092-0	Pin (H) (2 x 5.5)	1	83	461-441-8	Angle Casing	1	125	939-402-0	Manual Driver (No 2)	1				
45	970-105-0	Pin (H) (2 x 24)	1	84	461-420-7	Driving Gear	1	FOOTNOTES							
47	969-470-0	Pin (2 x 8)	1	85	461-430-8	Driven Gear(P)	1								
48	973-006-0	Roll Pin (2 x 6)	1	86	461-488-7	Angle Head Casing Cover	1								
49	973-010-0	Roll Pin (2 x 1D)	2												
50	973-118-0	Roll Pin (3 x 18)	1												



10000 SE PINE
PORTLAND, OR 97216
503-254-6600
FAX 503-255-2615

When ordering spare parts, please specify
tool type, part number, and description.