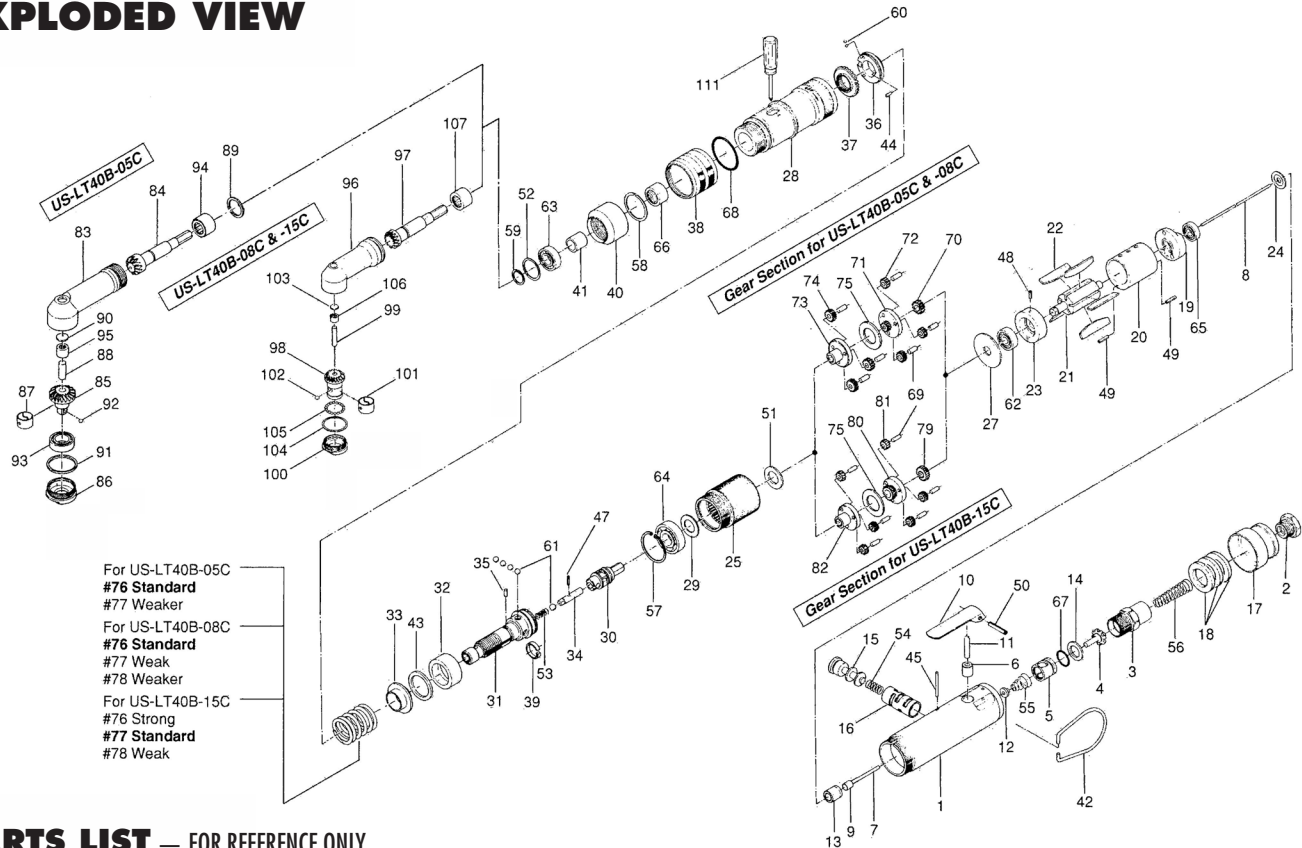


# US-LT40B-05C, -08C, & -15C SCREWDRIVERS

## EXPLODED VIEW



## PARTS LIST — FOR REFERENCE ONLY

Index Number	Part Number	Description	Qty.
<b>Common Parts</b>			
1	461-025-6	Casing	1
2	480-091-8	Air Inlet Bushing	1
3	461-097-6	Air Inlet Connector	1
4	259-100-0	Valve	1
5	461-102-6	Valve Bushing	1
6	553-103-1	Valve Rod Bushing	1
7	970-108-0	Pin (H)(2 X 26.8)	1
8	463-104-7	Valve Rod	1
9	444-106-8	Valve Rod Cap	1
10	700-107-1	Valve Lever	1
11	461-114-6	Valve Pin	1
12	259-254-0	Shut-off Valve	1
13	461-567-6	Bushing	1
14	996-424-0	Packing (16 X 9 X 2)	1
15	893-057-1	Reverse Valve Lock	1
16	472-211-7	Reverse Valve Bushing	1
17	472-782-7	Exhaust Deflector	1
18	161-835-4	Filter (K-50)	3
19	467-285-7	Rear Plate	1
20	472-286-7	Cylinder	1
21	472-287-7	Rotor	1
22	472-288-0	Blade (PC)	5
23	472-289-7	Front Plate	1
24	461-291-6	Rear Plate Spacer	1
25	472-029-7	Gear Casing	1
27	472-807-7	Spacer	1
28	461-369-8	Clutch Casing	1
29	461-344-6	Cam Retainer	1
30	472-346-5	Cam	1
31	472-319-7	Anvil	1
32	472-375-7	Cam Ring	1
33	472-379-8	Retainer	1
34	471-318-5	Pilot Pin	1
35	471-764-7	Notch Pin	1
36	472-562-8	Spring Holder	1
37	472-257-8	Regulating Screw	1
38	472-370-7	Clutch Casing Sleeve	1
39	471-670-7	Band	1
40	469-081-6	Locking Nut	1

Index Number	Part Number	Description	Qty.
41	469-807-5	Spacer	1
42	010-790-1	Suspension Ring	1
43	944-019-0	Back-up Ring (P-19)	1
44	970-092-0	Pin (H)(2 X 5.5)	1
45	970-105-0	Pin (H)(2 X 24)	1
47	969-470-0	Pin (2 X 8)	1
48	973-006-0	Roll Pin (2 X 6)	1
49	973-010-0	Roll Pin (2 X 10)	2
50	973-118-0	Roll Pin (3 X 18)	1
51	975-106-0	Spacer (18.5 X 11 X 1)	1
52	975-768-0	Adjusting Spacer (19 X 16.2 X t)	1
53	976-058-0	Spring (4.5 X 11)	1
54	976-147-0	Spring (7 X 12)	1
55	977-071-0	Cone Spring (5.5 X 11.5 X 15)	1
56	977-155-0	Cone Spring (7 X 10 X 35)	1
57	979-326-0	Inner Snap Ring (IRTW-26)	1
58	979-190-0	Outer Snap Ring (22)	1
59	979-351-0	Inner Snap Ring (ISTW-10)	1
60	981-001-0	Ball (3/32)	2
61	981-004-0	Ball (3/16)	5
62	982-063-0	Ball Bearing (606ZZ)	1
63	982-035-0	Ball Bearing (698)	1
64	982-100-0	Ball Bearing (6000)	1
65	987-039-0	Mini Ball Bearing (R1560ZZ)	1
66	988-394-0	Needle Roller Bearing (1210)	1
67	990-911-0	O-Ring (SNS-12)	1
68	990-923-0	O-Ring (SNS-26)	1
<b>Gear Section for US-LT40B-05C &amp; -08C</b>			
69	972-089-0	Roller Pin (3 X 8)	6
70	472-460-7	Rotor Gear	1
71	472-480-7	First Gear Cage	1
72	472-470-7	First Planet Gear	3
73	472-485-7	Second Gear Cage	1
74	472-471-7	Second Planet Gear	3
75	496-483-1	Gear Cage Spacer	1
76	976-515-0	Spring (22.7 X 28) Standard	1
Option	77	976-516-0	Spring (22.1 X 28)
	78	976-517-0	Spring (21.5 X 31)

Index Number	Part Number	Description	Qty.
<b>Gear Section for US-LT40B-15C</b>			
69	972-089-0	Roller Pin (3 X 8)	6
75	496-483-1	Gear Cage Spacer	1
79	472-460-5	Rotor Gear	1
80	472-480-5	First Gear Cage	1
81	472-470-5	First Planet Gear	6
82	472-485-5	Second Gear Cage	1
77	976-516-0	Spring (22.1 X 28) Standard	1
<b>Angle Section for US-LT40B-05C</b>			
83	461-441-8	Angle Casing	1
84	461-420-7	Driving Gear	1
85	461-430-3	Driven Gear	1
86	461-488-7	Angle Head Casing Cover	1
87	430-356-1	Bit Band	1
88	972-216-0	Roller Pin (6 X 16)	1
89	975-113-0	Spacer (19 X 15 X 1.5)	1
90	975-593-0	Round Plate (10 X 1)	1
91	975-787-0	Adjusting Spacer (26 X 24 X t)	1
92	981-002-0	Ball (1/8)	1
93	982-870-0	Ball Bearing (6801)	1
94	988-008-0	Needle Roller Bearing (NK10)	1
95	988-380-0	Needle Roller Bearing (F68)	1
<b>Angle Section for US-LT40B-08C &amp; -15C</b>			
96	469-441-7	Angle Casing	1
97	469-420-5	Driving Gear	1
98	469-430-5	Driven Gear	1
99	469-431-6	Driven Gear Spindle	1
100	469-488-5	Angle Head Casing Cover	1
101	430-356-1	Bit Band	1
102	981-002-0	Ball (1/8)	1
103	975-590-0	Round Plate (6.3 X 1)	1
104	975-771-0	Adjusting Spacer (20 X 18 X t)	1
105	981-000-0	Ball (1/16)	26
106	988-090-0	Needle Roller Bearing (B-24)	1
107	988-689-0	Needle Roller Bearing (1010)	1
<b>Accessory</b>			
111	939-402-0	Manual Driver (No. 2)	1



10000 SE PINE  
PORTLAND, OR 97216  
503-254-6600  
FAX 503-255-2615

When ordering spare parts, please specify  
tool type, part number, and description.

### FOOTNOTES