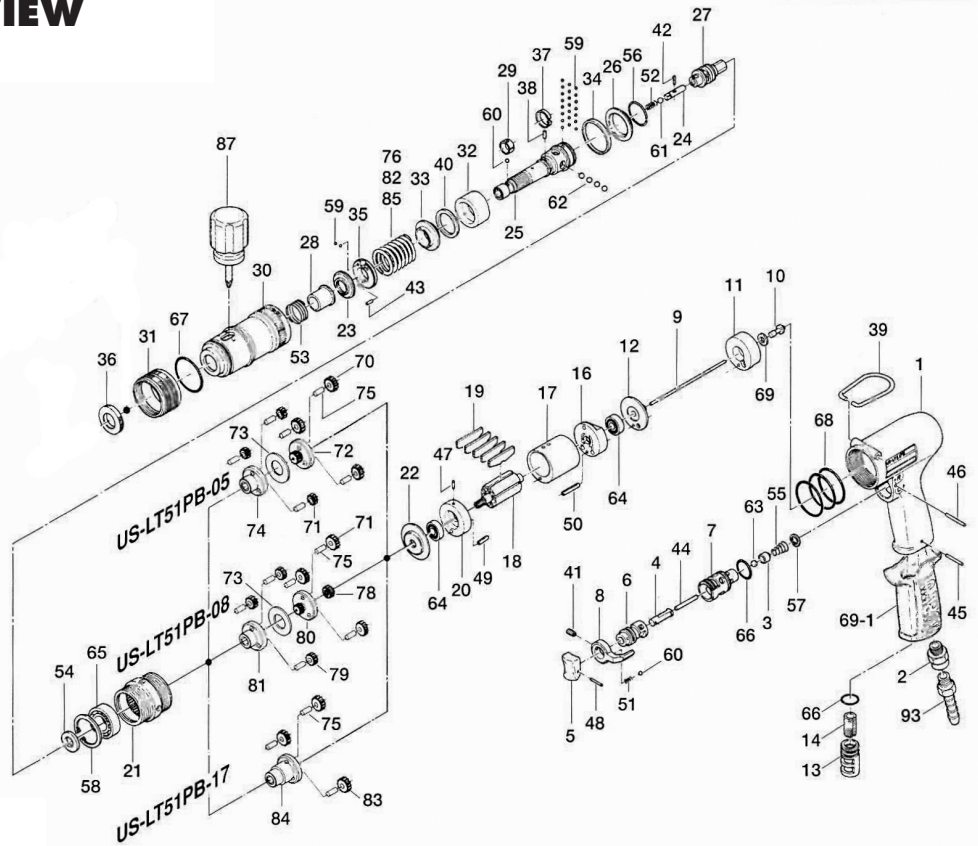


US-LT51PB-05, -08, -17 SCREWDRIVERS

EXPLODED VIEW



PARTS LIST — FOR REFERENCE ONLY

Index Number	Part Number	Description	Qty.	Index Number	Part Number	Description	Qty.	Index Number	Part Number	Description	Qty.
1	445-025-9	Handle	1	39	010-790-1	Suspension Ring	1	73	444-483-4	Gear Cage Spacer	1
2	480-091-8	Air Inlet Bushing	1	40	944-023-0	Back-Up Ring (P22A)	1	74	444-485-4	Second Gear Cage	1
3	480-100-9	Valve	1	41	952-106-0	Allen Head Screw (M4 x 6)	1	75	972-110-0	Needle Roller (4 x 10)	6
4	443-103-5	Valve Rod Bushing	1	42	969-470-0	Pin (E)(2 x 8)	1	76	976-620-0	Spring (27.5 x 37)	1
5	177-107-5	Valve Lever	5	43	970-092-0	Pin (H)(2 x 5.5)	1	Option			
6	480-210-9	Reverse Valve	1	44	970-228-0	Pin (H)(3 x 28)	1	82	976-614-0	Spring (27 x 38) Weaker	1
7	480-211-9	Reverse Valve Bushing	1	45	971-120-0	Pin (2 x 20)	1	85	976-588-0	Spring (25 x 38) Weakest	1
8	098-212-5	Reverse Lever	1	46	971-123-0	Pin (2 x 23)	1				
9	445-104-8	Valve Rod	1	47	973-007-0	Roll Pin (2 x 7)	1				
10	443-254-5	Shut-Off Valve	1	48	973-012-0	Roll Pin (2 x 12)	1				
11	445-282-9	Handle Bushing	1	49	973-072-0	Roll Pin (2.5 x 12)	1				
12	445-291-8	Rear Plate Spacer	1	50	973-080-0	Roll Pin (2.5 x 20)	1				
13	480-780-8	Exhaust Stack	1	51	976-006-0	Spring (3 x 5 x 0.4)	1				
14	480-835-8	Filter	1	52	976-058-0	Spring (4.5 x 11 x 0.4)	1				
16	444-285-4	Rear Plate	1	53	976-450-0	Spring (18.5 x 10 x 1.0)	1				
17	445-286-8	Cylinder	1	54	975-109-0	Spacer (20 x 9.5 x 1.5)	1				
18	444-287-4	Rotor	1	55	977-150-0	Cone Sprig (6.8 x 85 x 8 x 0.4)	1				
19	444-288-6	Blade (PC)	1	56	978-229-0	Snap Ring (23 x 1)	1				
20	444-289-4	Front Plate	1	57	979-002-0	Inner Snap Ring (9)	1	Option			
21	444-029-9	Gear Casing	1	58	979-025-0	Inner Snap Ring (32)	1	76	976-620-0	Spring (27.5 x 37) Strong	1
22	444-807-4	Spacer (A)	1	59	981-001-0	Ball (3/32)	24	85	976-588-0	Spring (25 x 38) Weaker	1
23	472-257-8	Adjusting Screw	1	60	981-002-0	Ball (1/8)	2				
24	471-318-5	Pilot Pin	1	61	981-004-0	Ball (3/16)	1				
25	444-319-4	Anvil	1	62	981-005-0	Ball (7/32)	4				
26	444-334-8	Anvil Spacer	1	63	981-206-0	Ball (1/4) (Black)	1				
27	444-346-3	Cam	1	64	982-066-0	Ball Bearing (607ZZ)	2				
28	472-351-7	Bit Sleeve	1	65	982-102-0	Ball Bearing (6002)	1	Option			
29	471-356-7	Bit Band	1	66	990-912-0	O-Ring (SNS-14)	2	82	976-614-0	Spring (27 x 38) Strong	1
30	444-369-8	Clutch Casing	1	67	990-935-0	O-Ring (SNS-31.5)	1				
31	444-370-4	Clutch Casing Sleeve	1	68	990-925-0	O-Ring (SNS-32)	3				
32	445-025-9	Handle	1	69	996-411-0	Packing (11 x 6 x 1)	1				
33	480-091-8	Air Inlet Bushing	1	69-1	147-842-2	Handle Cover	1				
34	444-397-8	Spacer (B)	1								
35	444-562-4	Spring Holder	1								
36	444-562-4	Bushing	1								
37	444-670-4	Band	1								
38	444-764-4	Notch Pin	1								



10000 SE PINE
 PORTLAND, OR 97216
 503-254-6600
 FAX 503-255-2615

When ordering spare parts, please specify
 tool type, part number, and description.

FOOTNOTES