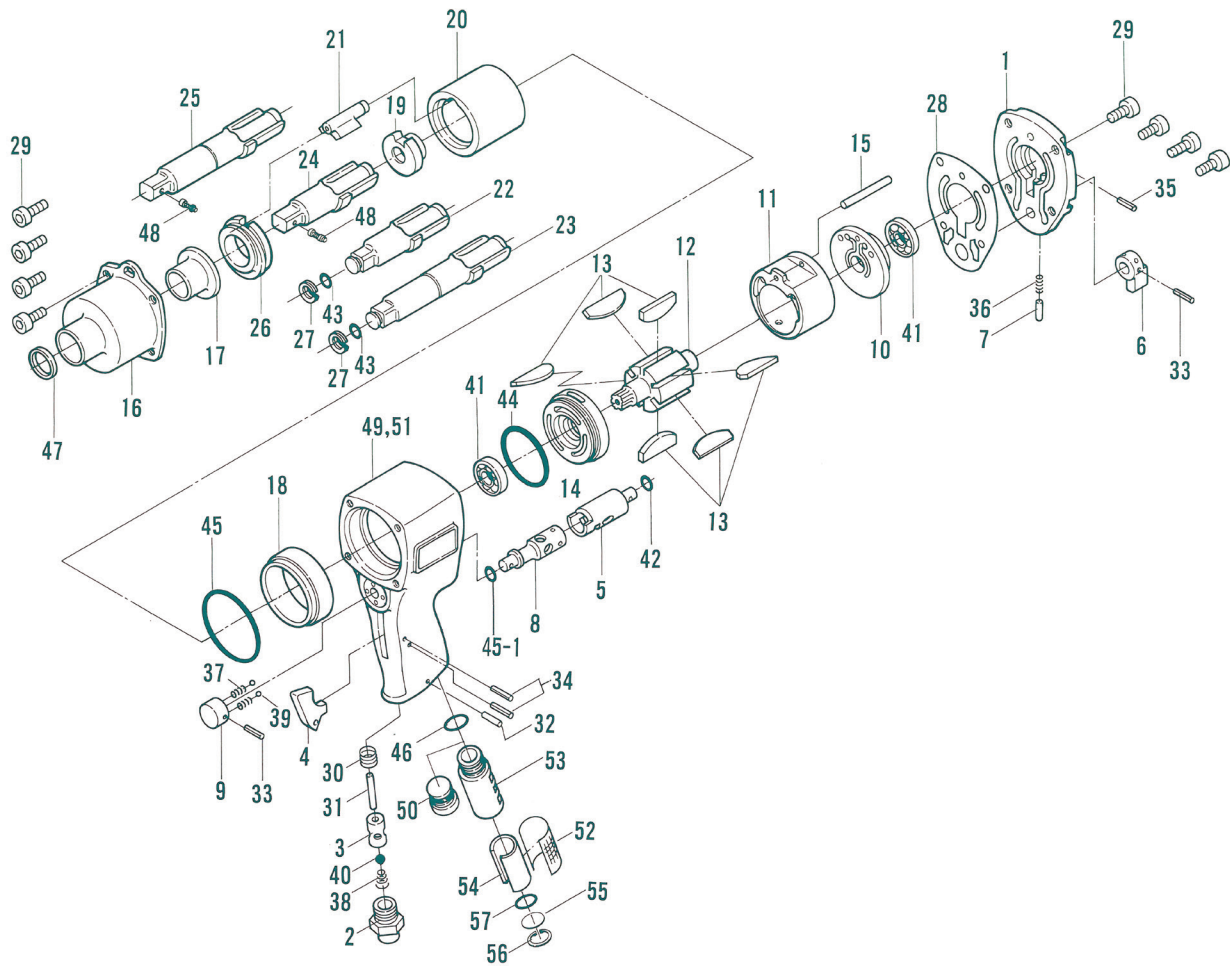


# UW-140P SERIES IMPACT WRENCH

## EXPLODED VIEW



## PARTS LIST — FOR REFERENCE ONLY

Index Number	Part Number	Description	Qty.	Index Number	Part Number	Description	Qty.	Index Number	Part Number	Description	Qty.
1	106-025-8	Head Cover	1	24	070-319-2	Anvil (0)	1	46	990-914-0	O-Ring (SNS-16)	1 ■
2	185-091-7	Air Inlet Bushing	1 ●■	25	070-323-7	Extended Anvil (0)	1	47	995-202-0	Oil Seal (VB19.05 x 25.4 x 3.2)	1 ▲
3	063-102-1	Valve Bushing	1 ●■	26	070-326-2	Hammer Cage Bushing	1	48	891-304-1	Socket Pin Assembly (1/2)	1
4	085-107-1	Throttle Trigger	1 ●■	27	070-379-3	Retainer	1	<b>PARTS FOR UW-140P &amp; UW140PL</b>			
5	070-210-2	Reverse Valve	1	28	070-853-2	Head Cover Packing	1	49	070-025-2	Handle	1 ●
6	070-212-2	Reverse Lever	1	29	945-120-0	Allen Head Bolt (M5 x 20)	8	50	070-021-2	Exhaust Cover	1
7	054-220-1	Reverse Lever Notch	1	30	965-073-0	Heli-Sert (UNF5/8) (N6)	1 ●■	<b>PARTS FOR UW-140PR &amp; UW140PRL</b>			
8	070-240-2	Regulator Valve	1	31	970-335-0	Pin (H) (4 x 34)	1 ●■	51	072-025-3	Handle	1 ■
9	054-242-1	Regulator Dial	1	32	971-163-0	Pin (2.5 x 23)	1 ■	52	195-042-9	Silencer	1 ■
10	070-285-2	Rear Plate	1	33	973-016-0	Roll Pin (2 x 16)	2	53	195-780-9	Exhaust Stack	1 ■
11	070-286-2	Cylinder	1	34	973-118-0	Roll Pin (3 x 18)	2 ●■	54	195-835-3	Filter	1 ■
12	070-287-2	Rotor	1	35	973-340-0	Roll Pin (6 x 10)	1	55	975-600-0	Spacer (20 x 1)	1 ■
13	070-288-2	Blade	6	36	976-018-0	Spring (2.8 x 8.5)	1	56	979-320-0	Inner Snap Ring (IRTW-20)	1 ■
14	070-289-2	Front Plate	1	37	976-066-0	Spring (4.6 x 9)	2	57	990-916-0	O-Ring (SNS-18)	1 ■
15	070-761-2	Cylinder Notch Pin	1	38	977-220-0	Cone Spring (9 x 10 x 25)	1 ●■				
16	070-028-2	Hammer Casing	1 ▲	39	981-004-0	Ball (3/16)	2				
17	070-328-2	Anvil Bushing	1 ▲	40	981-210-0	Ball (3/8)	1 ●■				
18	070-036-2	Hammer Casing Connector	1	41	982-403-0	Ball Bearing (EE-4)	2				
19	070-311-2	Hammer Cam	1	42	990-006-0	O-Ring (P8)	1				
20	070-312-2	Hammer Cage	1	43	990-206-0	O-Ring (JW1516-6)	1				
21	070-313-2	Hammer	1	44	990-315-0	O-Ring (ARP568-032)	1				
22	070-321-3	Anvil (WR)	1	45-1	990-904-0	O-Ring (SNS-6)	1				
23	070-324-8	Extended Anvil (WR)	1	45	990-316-0	O-Ring (ARP568-035)	1				

### FOOTNOTES

- = Parts for UW-140P Handle Assembly 070-984-2
- = Parts for UW-140PR Handle Assembly 070-984-3
- ▲ = Parts for Handle Casing Assembly 070-007-2



10000 SE PINE  
PORTLAND, OR 97216  
503-254-6600  
FAX 503-255-2615

When ordering spare parts, please specify  
tool type, part number, and description.