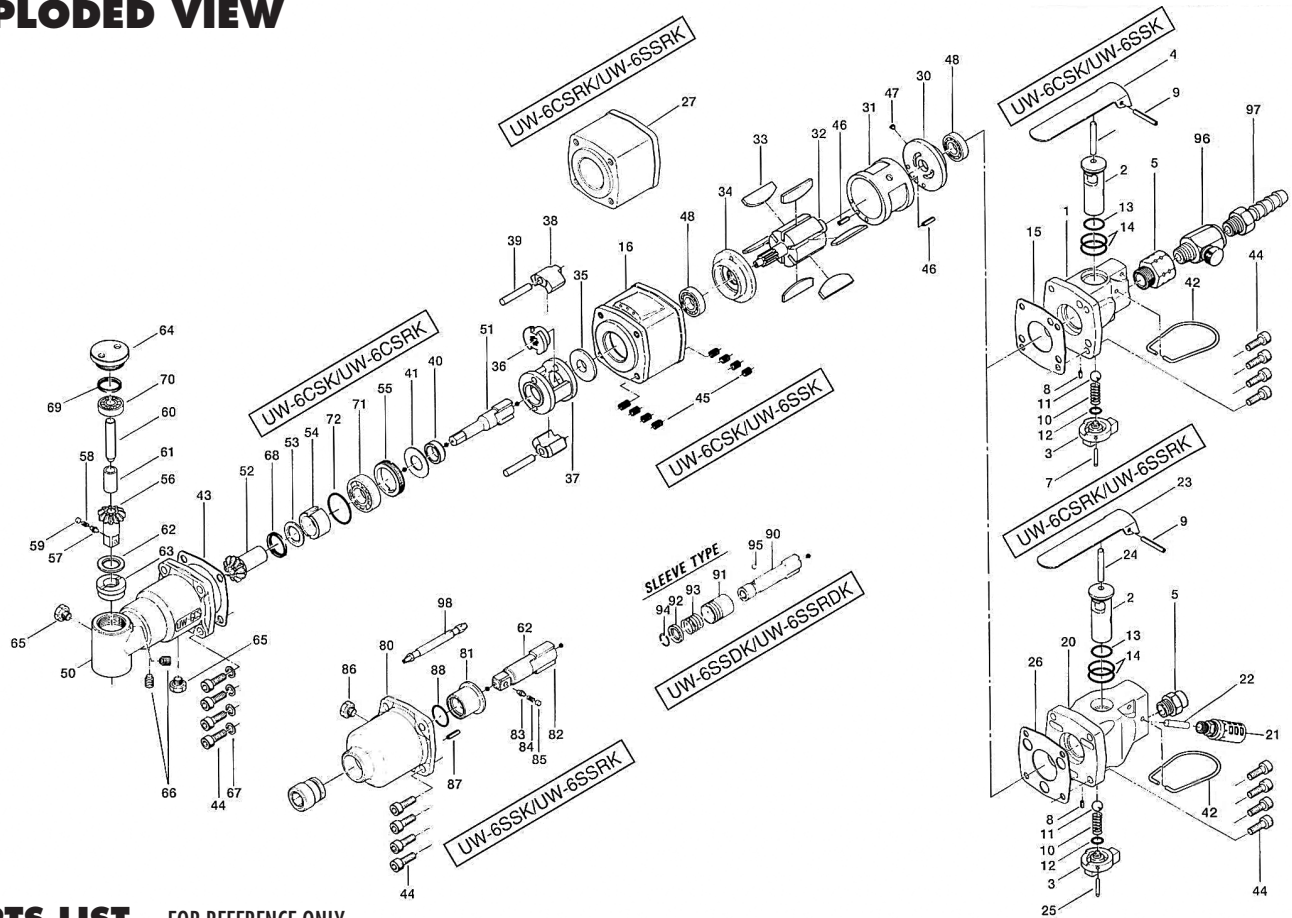


UW-6CS(R)(D)K & UW-6SS(R)(D)K IMPACT WRENCHES

EXPLODED VIEW



PARTS LIST — FOR REFERENCE ONLY

Index Number	Part Number	Description	Qty.
--------------	-------------	-------------	------

PARTS FOR UW-6CSK & UW-6SSK

1	014-014-2	Valve Body	1 ○
2	418-210-1	Reverse Valve	1 ○ ●
3	440-212-1	Reverse Lever	1 ○ ●
4	020-107-1	Valve Lever	1 ○
5	185-091-7	Air Inlet Bushing	1 ○ ●
6	970-324-0	Pin (H)(4 x 24)	1 ○
7	971-122-0	Pin (2 x 22)	1 ○
8	973-006-0	Roll Pin (2 x 6)	1 ○ ●
9	973-124-0	Roll Pin (3 x 24)	1 ○ ●
10	977-154-0	Cone Spring (7 x 7.5 x 17)	1 ○ ●
11	981-207-0	Ball (9/32)	1 ○ ●
12	990-003-0	O-Ring (P-5)	1 ○ ●
13	990-007-0	O-Ring (P-9)	1 ○ ●
14	990-014-0	O-Ring (P-14)	2 ○ ●
15	010-851-1	Rear Packing	1
16	014-025-1	Casing	1

PARTS FOR UW-6CSRK & UW-6SSRK

20	014-014-4	Valve Body	1 ●
21	235-885-0	Silencer Assembly	1 ●
22	029-744-7	Exhaust Tube	1 ●
23	438-107-3	Valve Lever	1 ●
24	970-327-0	Pin (H)(4 x 26)	1 ●
25	973-022-0	Roll Pin (2 x 22)	1 ●
26	014-852-4	Rear Packing	1
27	014-025-4	Casing	1
30	029-285-7	Rear Plate	1
31	029-286-7	Cylinder	1
32	010-287-1	Rotor	1
33	010-288-1	Blade	6
34	029-289-7	Front Plate	1
35	010-310-1	Anvil Rear Spacer	1
36	010-311-1	Hammer Cam	1

Index Number	Part Number	Description	Qty.
--------------	-------------	-------------	------

37	010-312-1	Hammer Cage	1
38	010-313-1	Hammer	2
39	010-317-1	Hammer Pin	2
40	010-326-1	Hammer Cage Bushing	1
41	010-327-1	Anvil Front Spacer	1
42	010-790-1	Suspension Ring	1
43	010-857-1	Front Packing	1
44	945-116-0	Allen Head Bolt (M5 x 16)	8
45	965-011-0	Heli-Sert (M5 x 1.5D)	8
46	973-110-0	Roll Pin (3 x 10)	2
47	980-008-0	Round Head Notch (2.4)	1
48	982-402-0	Ball Bearing (EE-3)	2

ANGLE HEAD CASING FOR UW-6CSK & UW-6CSRK

50	014-028-2	Angle Head Casing	1 ■
51	014-319-1	Anvil	1
52	014-420-1	Driving Gear	1 ■
53	014-425-1	Driving Gear Spacer	1 ■
54	014-421-2	Driving Gear Bushing	1 ■
55	014-422-1	Driving Gear Bushing Screw	1 ■
56	139-430-1	Driven Gear (P)	1 ■
57	135-800-2	Socket Retainer Pin	1 ■
58	976-018-0	Spring (2.8 x 8.5)	1 ■
59	971-250-0	Pin (3.3 x 2)	1 ■
60	014-431-1	Driven Gear Spindle	1 ■
61	014-432-1	Driven Gear Collar	1 ■
62	014-433-1	Driven Gear Spacer	1 ■
63	014-434-1	Driven Gear Bushing	1 ■
64	014-067-2	Angle Head Casing Cover	1 ■
65	945-962-0	Hexagon Head Bolt (M6 x 6)	2 ■
66	952-308-0	Allen Head Screw (M6 x 8)	2 ■
67	962-075-0	Spring Washer (5.8 x 8.5 x 1.5)	4
68	975-780-0	Adjusting Spacer (21 x 13 x 1)	1 ■
69	975-804-0	Adjusting Spacer (28 x 24 x 1)	1 ■

Index Number	Part Number	Description	Qty.
--------------	-------------	-------------	------

70	982-401-0	Ball Bearing (EE-2)	1 ■
71	982-403-0	Ball Bearing (EE-4)	1 ■
72	990-910-0	O-Ring (SUS-12.5)	1 ■

HAMMER CASING FOR UW-6SSK & UW-6SSRK

80	010-028-7	Hammer Casing	1 ▲
81	010-328-1	Anvil Bushing	1 ▲
82	135-319-1	Anvil (P)	1
83	135-800-2	Socket Retainer Pin	1
84	976-018-0	Spring (2.8 x 8.5)	1
85	971-250-0	Pin (3.3 x 2)	1
86	945-962-0	Hexagon Head Bolt (M6 x 6)	1 ▲
87	973-006-0	Roll Pin (2 x 6)	1 ▲
88	993-032-0	Felt Ring (12 x 17 x 2)	1 ▲

SLEEVE TYPE FOR UW-6SSDK & UW-6SSRDK

90	011-350-1	Driver Anvil	1
91	011-351-1	Bit Sleeve	1
92	011-352-1	Bit Spacer	1
93	976-327-0	Spring (13.5 x 11)	1
94	978-117-0	Snap Ring (11.7 x 1.0)	1
95	981-002-0	Ball (1/8)	1

ACCESSORIES

96	932-110-0	Air Regulator (u1.4)	1
97	940-114-0	Air Hose Nipple (NPT1/4 x 3/8)	1
98	916-610-0	(+) Double Bit (No. 2 x 75) for UW-6SSDK only	1

FOOTNOTES

- = Components for Valve Body Assembly #014-981-1 (for UW-6CSK & UW-6SSK)
- = Components for Valve Body Assembly #014-981-4 (for UW-6CSRK & UW-6SSRK)
- = Components for Angle Head Casing Assembly #014-883-1 (for UW-6CSK & UW-6CSRK)
- ▲ = Components for Hammer Casing Assembly #010-007-7 (for UW-6SSK & UW-6SSRK)



10000 SE PINE
PORTLAND, OR 97216
503-254-6600
FAX 503-255-2615

When ordering spare parts, please specify
tool type, part number, and description.