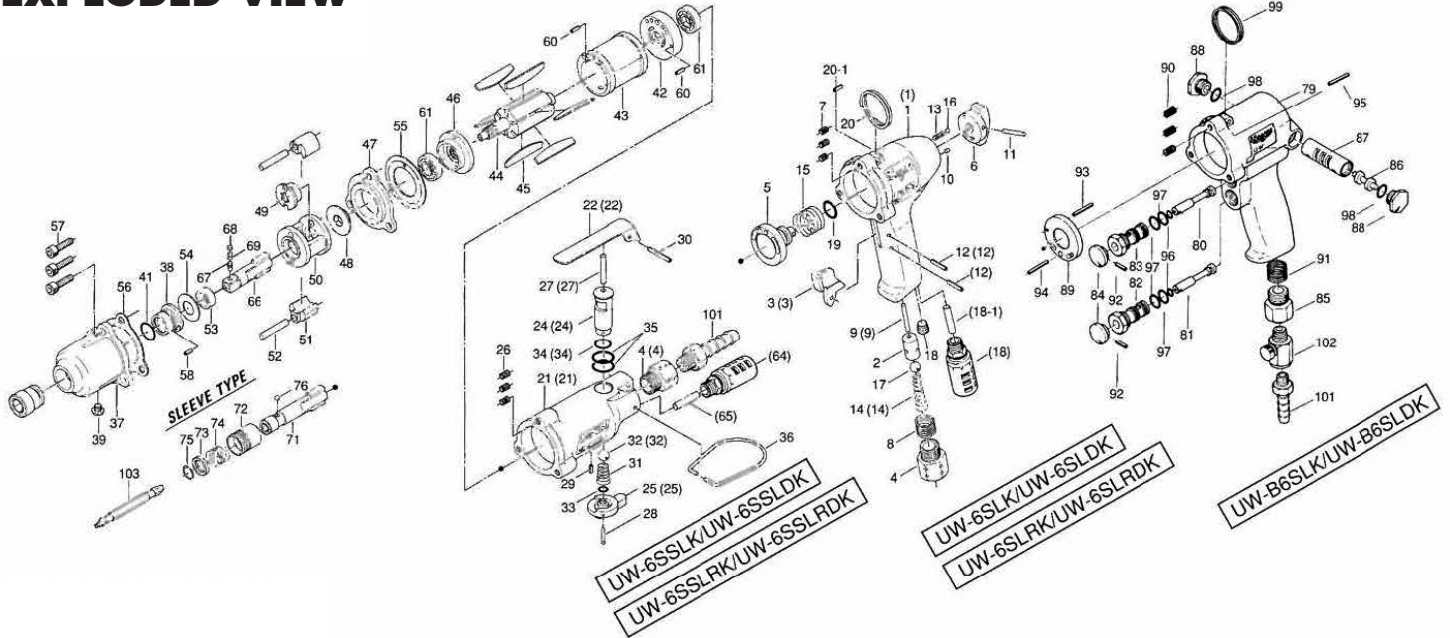


# UW-6SL(R)(D)(RD)K, UW-6SS(R)(D)(RD)K, & UW-B6SL(D)K

## EXPLODED VIEW



## PARTS LIST — FOR REFERENCE ONLY

Index Number	Part Number	Description	Qty.
--------------	-------------	-------------	------

### 004-984-1 Handle Assembly for UW-6SLK & UW-6SLDK

Index Number	Part Number	Description	Qty.
Components marked with ●			
1	004-025-3	Handle	1 ●
2	010-102-1	Valve Bushing	1 ●
3	004-107-2	Throttle Trigger	1 ●
4	185-091-7	Air Inlet Bushing	1 ●
5	004-210-1	Reverse Valve	1 ●
6	004-212-1	Reverse Lever	1 ●
7	965-011-0	Heli-Sert (M5 x 1.5D)	3 ●
8	965-073-0	Heli-Sert (UNF 5/8 N6)	1 ●
9	970-230-0	Pin (H) (3 x 39)	1 ●
10	970-206-0	Pin (H) (3 x 8)	1 ●
11	973-124-0	Roll Pin (3 x 24)	1 ●
12	973-116-0	Roll Pin (3 x 16)	1 ●
13	976-027-0	Spring (3 x 11)	1 ●
14	977-1550	Cone Spring (7 x 10 x 35)	1 ●
15	976-485-0	Spring (20.2 x 14)	1 ●
16	981-002-0	Ball (1/8)	1 ●
17	981-207-0	Ball (9/32)	1 ●
18	966-100-0	Hexagon Head Plug (1/8)	1 ●
19	990-010-0	O-Ring (P-11)	1 ●
20	004-790-2	Suspension Ring	1 ●
20-1	973-340-0	Roll Pin (6 x 10)	1 ●

### 004-984-5 Handle Assembly for UW-6SLRK & UW-6SLRDK

Index Number	Part Number	Description	Qty.
Components marked with ■			
(1)	004-205-5	Handle	1 ■
2	010-102-1	Valve Bushing	1 ■
(3)	026-107-7	Throttle Trigger	1 ■
4	185-091-7	Air Inlet Bushing	1 ■
5	004-210-1	Reverse Valve	1 ■
6	004-212-1	Reverse Lever	1 ■
7	965-011-0	Heli-Sert (M5 x 1.5D)	3 ■
8	965-073-0	Heli-Sert (UNF 5/8 N6)	1 ■
(9)	970-233-0	Pin (H) (3 x 33)	1 ■
10	970-206-0	Pin (H) (3 x 8)	1 ■
(11)	973-124-0	Roll Pin (3 x 24)	1 ■
(12)	973-122-0	Roll pin (3 x 22)	2 ■
13	976-027-0	Spring (3 x 11)	1 ■
(14)	977-178-0	Cone Spring (7.8 x 9.8 x 22)	1 ■
15	976-485-0	Spring (20.2 x 14)	1 ■
16	981-002-0	Ball (1/8)	1 ■
17	981-207-0	Ball (9/32)	1 ■
(18)	235-885-0	Silencer	1 ■
(18-1)	004-744-7	Exhaust Tube	1 ■
19	990-010-0	O-Ring (P-11)	1 ■
20	004-790-2	Suspension Ring	1 ■
20-1	973-340-0	Roll Pin (6 x 10)	1 ■

Index Number	Part Number	Description	Qty.
--------------	-------------	-------------	------

### 006-984-1 Casing Assembly for UW-6SSLK & UW-6SSLDK

Index Number	Part Number	Description	Qty.
Components marked with ▲			
21	006-025-2	Casing	1 ▲
22	008-107-1	Valve Lever	1 ▲
4	185-091-7	Air Inlet Bushing	1 ▲
24	008-210-1	Reverse Valve	1 ▲
25	008-212-1	Reverse Lever	1 ▲
26	965-011-0	Heli-Sert (M5 x 1.5D)	3 ▲
27	970-324-0	Pin (H) (4 x 27)	1 ▲
28	971-122-0	Pin (2 x 22)	1 ▲
29	973-006-0	Roll Pin (2 x 6)	1 ▲
30	973-124-0	Pin (3 x 24)	1 ▲
31	977-154-0	Cone Spring (7 x 7.5 x 17)	1 ▲
32	981-208-0	Ball (5/16)	1 ▲
33	990-003-0	O-Ring (P-5)	1 ▲
34	990-008-0	O-Ring (P-10)	1 ▲
35	990-014-0	O-Ring (P-14)	2 ▲
36	010-790-1	Suspension Ring	1 ▲

### 006-984-4 Casing Assembly for UW-6SSLRK & UW-6SSLRDK

Index Number	Part Number	Description	Qty.
Components marked with ○			
(21)	006-025-4	Casing	1 ○
(22)	500-107-1	Valve Lever	1 ○
(4)	180-091-6	Air Inlet Bushing	1 ○
(24)	418-210-1	Reverse Valve	1 ○
(25)	440-212-1	Reverse Lever	1 ○
26	965-011-0	Heli-Sert (M5 x 1.5D)	3 ○
(27)	970-327-0	Pin (H) (4 x 26)	1 ○
28	971-122-0	Pin (2 x 22)	1 ○
29	973-006-0	Roll Pin (2 x 6)	1 ○
30	973-124-0	Pin (3 x 24)	1 ○
31	977-154-0	Cone Spring (7 x 7.5 x 17)	1 ○
(32)	981-207-0	Ball (9/32)	1 ○
33	990-003-0	O-Ring (P-5)	1 ○
(34)	990-007-0	O-Ring (P-9)	1 ○
35	990-014-0	O-Ring (P-14)	2 ○
36	010-790-1	Suspension Ring	1 ○
(64)	235-885-0	Silencer	1 ○
(65)	004-744-7	Exhaust Tube	1 ○

### 040-984-1 Handle Assembly for UW-B6SLK & UW-B6SLDK

Index Number	Part Number	Description	Qty.
Components marked with □			
79	040-025-1	Handle	1 □
80	040-100-1	Valve	1 □
81	603-100-2	Valve	1 □
82	606-101-1	Valve Bushing	1 □
83	040-101-1	Valve Bushing	1 □
84	603-107-2	Throttle Trigger	2 □
85	180-091-6	Air Inlet Bushing	1 □
86	040-210-1	Reverse Valve	1 □

Index Number	Part Number	Description	Qty.
--------------	-------------	-------------	------

87	040-211-2	Reverse Valve Bushing	1 □
88	040-214-2	Reverse Valve Cover	2 □
89	040-291-1	Rear Plate Spacer	1 □
90	965-011-0	Heli-Sert (M5 x 1.5D)	3 □
91	965-073-0	Heli-Sert (UNF5/8 N6)	1 □
92	973-010-0	Roll Pin (2 x 10)	2 □
93	973-084-0	Roll Pin (2.5 x 24)	1 □
94	973-068-0	Roll Pin (2.5 x 8)	1 □
95	973-340-0	Roll Pin (6 x 10)	1 □
96	990-203-0	O-Ring (JW1516-3)	2 □
97	990-610-0	O-Ring (8 x 2)	4 □
98	990-908-0	O-Ring (SNS-10)	2 □
99	004-790-2	Suspension Ring	1 □

## COMMON PARTS

### 004-007-3 Hammer Casing Assembly

Index Number	Part Number	Description	Qty.
Components marked with ◇			
37	004-028-2	Hammer Casing	1 ◇
38	004-328-1	Anvil Bushing	1 ◇
39	945-962-0	Hexagon Head Bolt (M6 x 6)	1 ◇
41	993-032-0	Felt Ring (12 x 17 x 2)	1 ◇
42	973-006-0	Roll Pin (2 x 6)	1 ◇
43	004-285-7	Rear Plate	1 ◇
44	004-286-7	Cylinder	1 ◇
45	004-287-1	Rotor	1 ◇
46	004-288-1	Blade	6 ◇
47	004-289-7	Front Plate	1 ◇
48	004-027-1	Separator	1 ◇
49	010-310-1	Anvil Rear Spacer	1 ◇
50	004-311-1	Hammer Cam	1 ◇
51	004-312-1	Hammer Cage	1 ◇
52	004-313-1	Hammer	2 ◇
53	004-317-1	Hammer Pin	2 ◇
54	004-326-1	Hammer Cage Bushing	1 ◇
55	010-327-1	Anvil Front Spacer	1 ◇
56	004-856-1	Separator Packing	1 ◇
57	004-857-1	Front Packing	1 ◇
58	945-118-0	Allen Head Bolt (M5 x 18)	3 ◇
59	973-074-0	Roll Pin (2.5 x 14)	2 ◇
60	982-402-0	Ball Bearing (EE-3)	2 ◇

### Square Anvil Type

66	131-846-2	Anvil (P)	1
67	135-800-2	Socket Retainer Pin	1
68	971-250-0	Pin (3.3 x 2)	1
69	976-018-0	Spring (2.8 x 8.5)	1

### Driver Anvil Type

71	005-350-1	Driver Anvil (1/8)	1
72	011-351-1	Bit Sleeve	1
73	011-352-1	Bit Spacer	1
74	976-327-0	Spring (13.5 x 11)	1
75	978-117-0	Snap Ring (11.7 x 1.0)	1
76	981-002-0	Ball (1/8)	1

## ACCESSORIES

102	932-1100	Air Regulator (U1/4)	1
-----	----------	----------------------	---



1000 SE PINE  
PORTLAND, OR 97216  
503-254-6600  
FAX 503-255-2615

When ordering spare parts, please specify  
tool type, part number, and description.