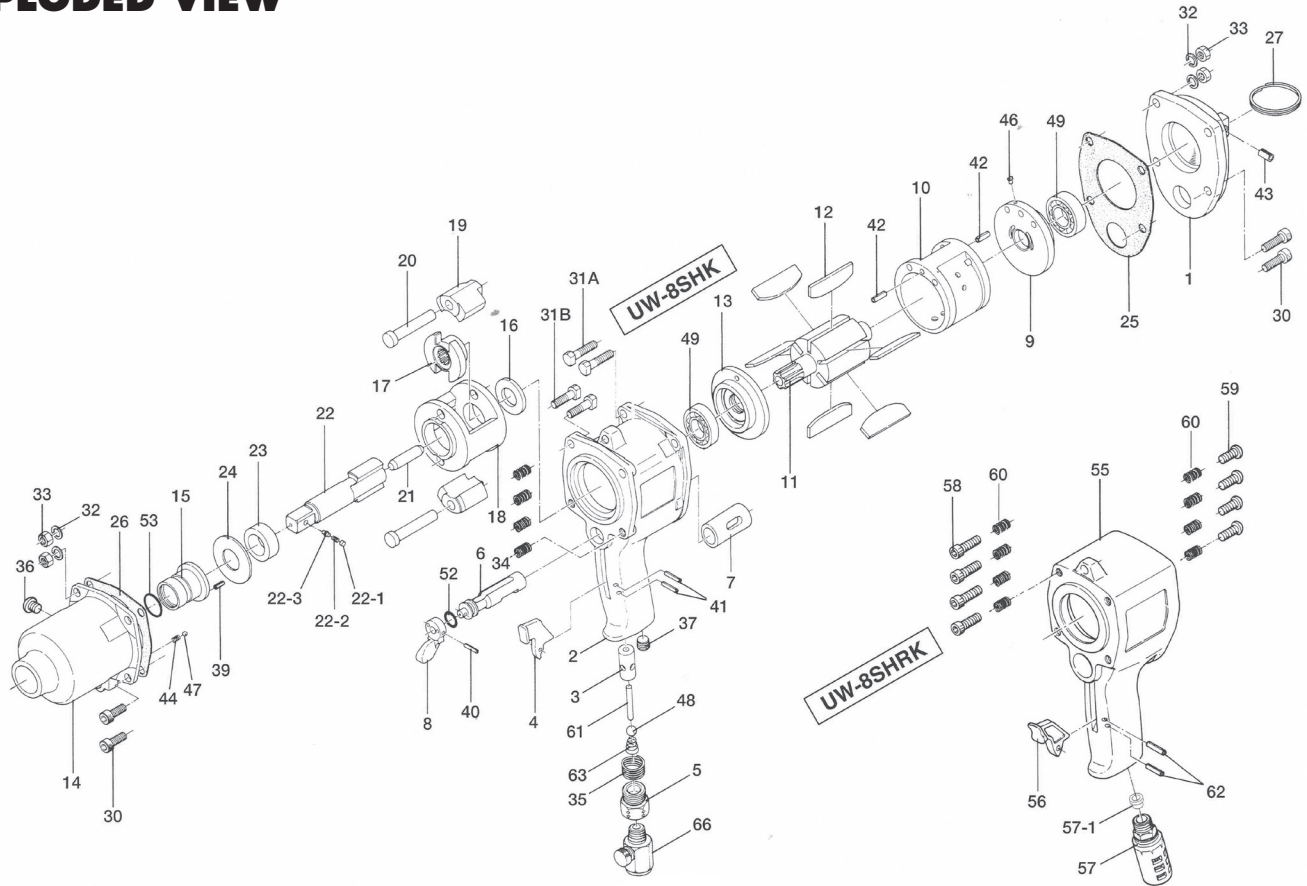


# UW-8SHK & UW-8SHRK IMPACT WRENCHES

## EXPLODED VIEW



### PARTS LIST — FOR REFERENCE ONLY

Index Number	Part Number	Description	Qty.	Index Number	Part Number	Description	Qty.	Index Number	Part Number	Description	Qty.
1	031-012-1	Head Cover	1	23	031-326-1	Hammer Cage Bushing	1	49	982-403-0	Ball Bearing (EE4)	2
2	031-025-3	Handle	1	24	031-327-1	Anvil Front Spacer	1	52	990-007-0	O-Ring (P9)	1
3	010-102-1	Valve Bushing	1	25	031-853-1	Head Cover Packing	1	53	993-034-0	Felt Ring (16 x 21 x 2)	1
4	018-107-2	Valve Lever	1	26	031-857-1	Hammer Casing Packing	1	<b>Option</b>			
5	185-091-7	Air Inlet Bushing	1	27	004-790-2	Suspension Ring	1	54	031-319-1	Anvil (0)	1
6	031-210-1	Reverse Valve	1	30	945-115-0	Allen Head Bolt (M5 x 15)	4	<b>PARTS FOR UW-8SHRK</b>			
7	031-211-1	Reverse Valve Bushing	1	31A	947-120-0	Half Head Bolt (M5 x 20)	2	55	031-025-5	Handle	1
8	041-212-2	Reverse Lever	1	31B	947-122-0	Half Head Bolt (M5 x 22)	2	56	026-107-7	Valve Lever	1
9	031-285-7	Rear Plate	1	32	961-012-0	Flat Washer (5)	4	57	031-885-7	Silencer Assembly	1
10	031-286-7	Cylinder	1	33	960-036-0	Hexagon Nut (1-M5)	4	57-1	031-744-8	Silencer Bushing	1
11	031-287-1	Rotor	1	34	965-011-0	Heli-vert (M5 x 1.50)	4	58	945-116-0	Allen Head Bolt (M5 x 16)	4
12	031-288-1	Blade	6	35	965-073-0	Heli-vert (UNF5/8 N6)	1	59	945-954-0	Hexagon Head Bolt (M5 x 16)	4
13	031-289-7	Front Plate	1	36	945-962-0	Hexagon Head Bolt (M6 x 6)	1	60	965-011-0	Heli-vert (M5 x 1.5D)	8
14	031-028-7	Hammer Casing	1	37	966-100-0	Allen Head Plug (1/8)	1	61	970-233-0	Pin (H) (3 x 33) / Valve Rod	1
15	031-328-1	Anvil Bushing	1	38	970-229-0	Pin (H) (3 x 29)	1	62	973-120-0	Roll Pin (3 x 20) / Valve Lever	2
16	018-310-1	Anvil Rear Spacer	1	39	973-006-0	Roll Pin (2 x 6)	1	63	977-175-0	Cone Spring (7.5 x 10.3 x 22) / Valve	1
17	031-311-1	Hammer Cam	1	40	973-014-0	Roll Pin (2 x 14)	1	<b>ACCESSORIES</b>			
18	031-312-1	Hammer Cage	1	41	973-116-0	Roll Pin (3 x 16)	2	66	932-110-0	Air Regulator (U 1/4)	1
19	031-313-1	Hammer	2	42	973-108-0	Roll Pin (3 x 8)	2	<b>AIMCO also offers a complete line of standard &amp; special adapters, bits, sockets, and extensions</b>			
20	031-317-1	Hammer Pin	2	43	973-338-0	Roll Pin (6 x 8)	1	<b>FOOTNOTES</b>			
21	041-318-1	Pilot Pin	1	44	976-032-0	Spring (3.6 x 13)	1				
22	151-319-1	Anvil (P)	1	45	977-178-0	Cone Spring (7.8 x 9.8 x 22)	1				
22-1	153-800-2	Socket Retainer Pin	1	46	980-008-0	Round Head Notch (2.4)	1				
22-2	976-034-0	Spring (23.6 x 11)	1	47	981-003-0	Ball (5/32)	1				
22-3	971-302-0	Pin (4 x 2)	1	48	981-207-0	Ball (9/32)	1				



10000 SE PINE  
PORTLAND, OR 97216  
503-254-6600  
FAX 503-255-2615

When ordering spare parts, please specify  
tool type, part number, and description.