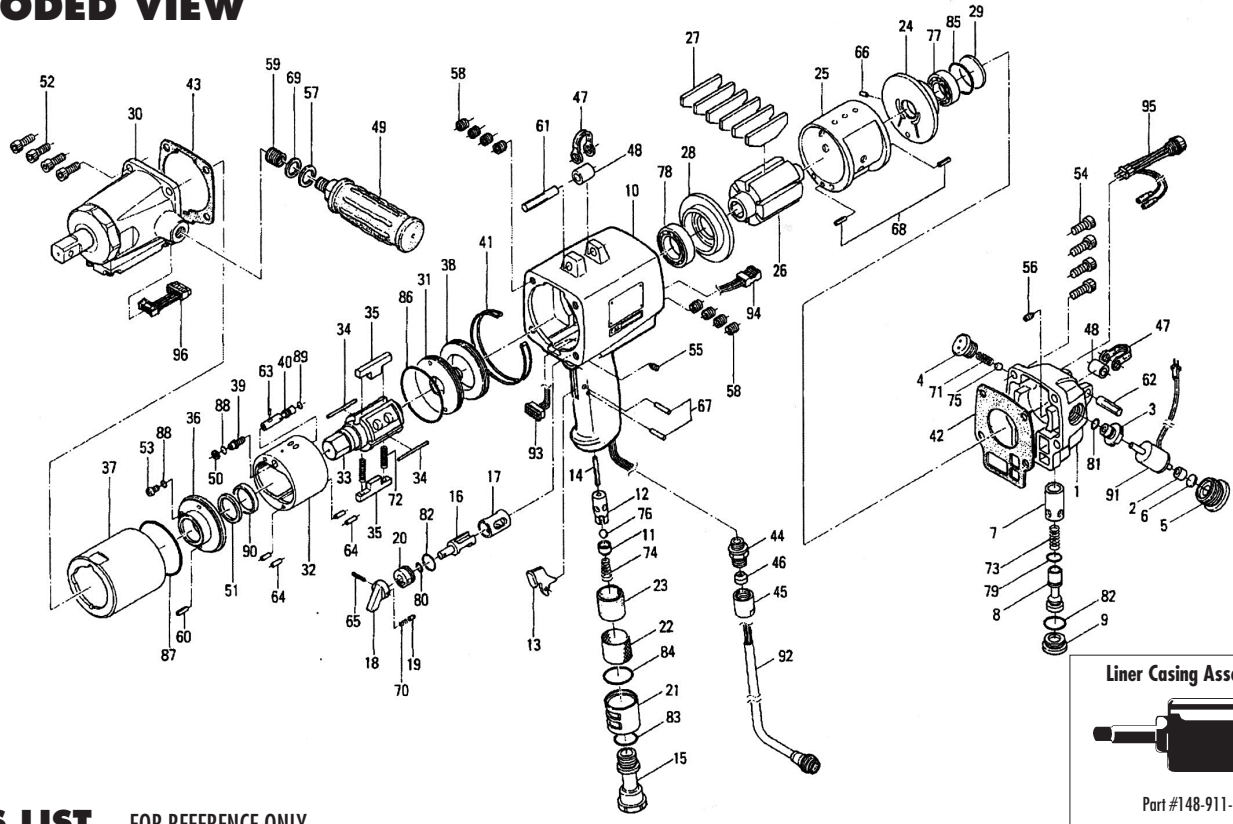


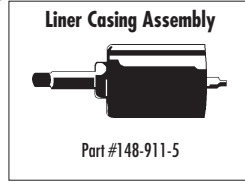
UXR-1820MC OIL-PULSE TOOLS

EXPLODED VIEW



PARTS LIST — FOR REFERENCE ONLY

Index Number	Part Number	Description	Qty.	Index Number	Part Number	Description	Qty.	Index Number	Part Number	Description	Qty.
1	148-012-5	Head Cover	1	37	195-905-9	Liner Casing	1	69	975-127-0	Spacer (20 x 13 x 1)	1
2	148-120-6	Valve Packing Spacer	1	38	195-906-9	Liner Casing Setter	1	70	976-025-0	Spring (3 x 8.5) (0.5)	1
3	148-147-5	Stop Valve Bushing	1	39	175-907-9	Relief Valve Spindle	1	71	976-114-0	Spring (6 x 18) (0.55)	1
4	182-148-8	Stop Valve Cover	1	40	172-970-5	Relief Valve	1	72	976-796-0	Spring (4.3 x 48) (0.6) WPC	2
5	148-149-6	Stop Valve Plug	1	41	148-754-5	Clip Guide	1	73	976-231-0	Spring (9 x 27.5) (0.9)	1
6	193-872-6	Valve Packing	1	42	148-853-5	Head Cover Packing	1	74	977-180-0	Cone Spring (7.5 x 12 x 22) (0.8)	1
7	148-253-5	Shut-Off Valve Bushing	1	43	148-867-5	Front Casing Packing	1	75	981-029-0	Ball (1/4)	1
8	148-254-5	Shut-Off Valve	1	44	149-079-2	Connector	1	76	981-208-0	Ball (5/16)	1
9	148-927-5	Shut-Off Valve Cover	1	45	149-018-2	Cap	1	77	982-103-0	Ball Bearing (6003)	1
10	148-025-5	Handle	1	46	149-562-2	Stopper	1	78	982-906-0	Ball Bearing (6905)	1
11	188-100-1	Valve	1	47	195-790-9	Suspension Ring	2	79	990-007-0	O-Ring (P9)	1
12	063-102-3	Valve Bushing	1	48	173-796-3	Suspension Bushing	2 ●	80	990-205-0	O-Ring (JW1516-5)	1
13	018-107-2	Valve Lever	1	49	566-720-2	Dead Handle (A)	1	81	990-906-0	O-Ring (SNS-8)	1
14	148-104-6	Valve Rod	1	50	944-205-0	Supporting Ring (5.1 x 7 x 1)	1 ●	82	990-914-0	O-Ring (SNS-16)	2
15	148-091-5	Air Inlet Bushing	1	51	944-225-0	Supporting Ring (25.2 x 29.4 x 1.5)	1 ●	63	990-918-0	O-Ring (SNS-20)	1
16	189-210-8	Reverse Valve	1	52	945-220-0	Allen Head Bolt (M6 x 20)	4	84	990-920-0	O-Ring (SNS-25)	1
17	189-211-8	Reverse Valve Bushing	1	53	945-942-0	Hexagon Round Head Bolt (M4 x 6)	1	85	990-925-0	O-Ring (SNS-32)	1
18	023-212-4	Reverse Valve Lever	1	54	945-964-0	Allen Head Bolt (M6 x 18)	4	86	990-940-0	O-Ring (SNS-53)	1 ●
19	054-220-1	Reverse Valve Notch	1	55	952-108-0	Allen Head Dog Point Screw (M4 x 8)	1	87	990-941-0	O-Ring (SNS-55)	1 ●
20	187-222-1	Reverse Valve Setter	1	56	954-105-0	Allen Head Cone Point Screw (M4 x 5)	1	88	990-971-0	O-Ring (SNS-3) (NOK)	2 ●
21	163-780-3	Exhaust Bushing	1	57	962-013-0	Spring Washer (2-12S)	1	89	990-972-0	O-Ring (SNS-4) (NOK)	1 ●
22	163-042-3	Silencer	1	58	965-021-0	Heli-Sert (M6 x 1.5)	8	90	990-170-0	O-Ring (ARP568-120) (NTN)	1 ●
23	163-835-3	Filter	1	59	965-058-0	Heli-Sert (M12 x 1D)	1	91	909-935-0	Solenoid Valve Assembly	1
24	148-285-5	Rear Plate	1	60	969-405-0	Pin (G) (3.5 x 8)	1	92	911-084-0	Joint Cable Assembly (BLUE)	1
25	195-286-9	Cylinder	1	61	969-480-0	Pin (G) (8 x 40)	1	93	909-918-0	Socket (DF-12DC-2C)	1
26	195-287-9	Rotor	1	62	969-481-0	Pin (G) (8 x 45)	1	94	909-733-0	Socket (RF-06)	1
27	148-288-5	Blade (PC)	6	63	970-093-0	Pin (H) (2 x 6)	1	95	909-548-0	LED Lamp Assembly	1
28	195-289-9	Front Plate	1	64	970-308-0	Pin (H) (4 x 8)	4	96	909-997-0	Sensor Cable Connector Assembly	1
29	148-291-5	Rear Plate Spacer	1	65	973-016-0	Roll Pin (2 x 1 6)	1				
30	851-685-1	Sensor Casing Assembly (S30-19)	1	66	973-066-0	Roll Pin (2.5 x 6)	1				
31	195-901-9	Rear Liner Plate	1	67	973-118-0	Roll Pin (3 x 18)	2				
32	172-902-2	Liner	1	68	973-212-0	Roll Pin (4 x 12)	2				
33	148-319-5	Anvil	1								
34	173-974-2	Roller (3.4 x 45)	2								
35	195-440-9	Driving Blade	2								
36	172-904-2	Front Liner Plate	1								



ACCESSORIES

98	904-321-0	Extension Bar (3/4 x 71) (MC)	1
99	953-306-0	Allen Head Flat Point Screw (M6 x 6)	1
100	971-324-0	Pin (4 x 24)	1

FOOTNOTES

● = Items in Pulse Repair Kit UXR-1820MC-PRK



10000 SE PINE
PORTLAND, OR 97216
503-254-6600
FAX 503-255-2615

When ordering spare parts, please specify tool type, part number, and description.