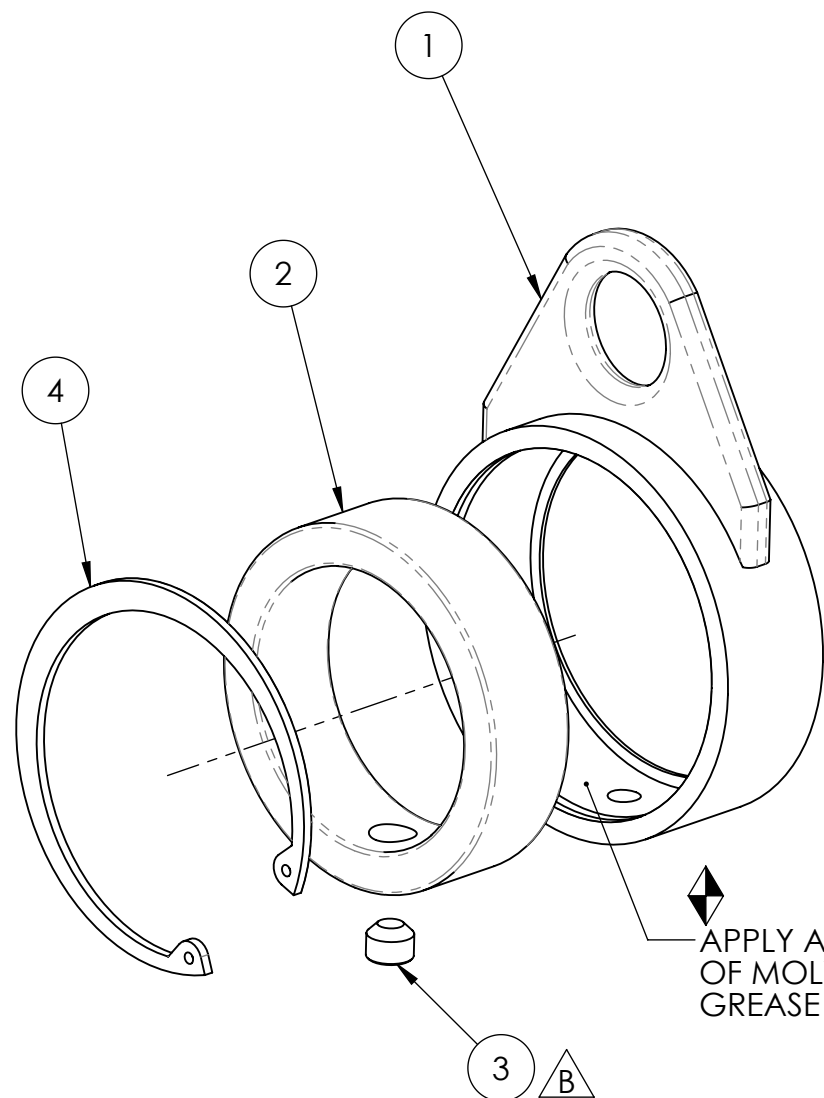
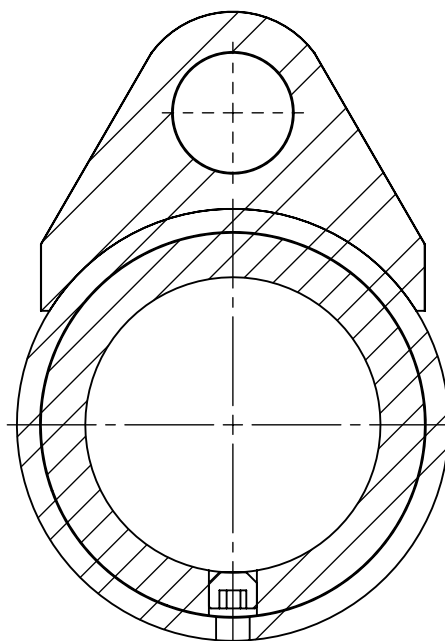


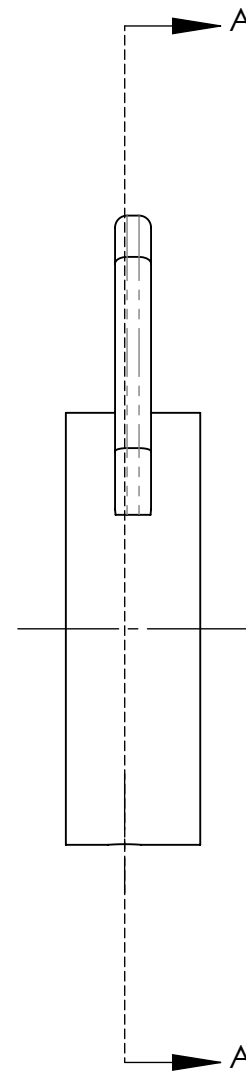
COMMENTS	ITEM NO.	PART NUMBER	QTY.	DESCRIPTION
	1	26330	1	SWIVEL BAIL OUTER RING WELDMENT
	2	26323	1	SWIVEL BAIL INNER RING
	3	27247	1	SCREW, SET, 1/2-13 x .375, STEEL
	4	26324	1	BAIL CIRCLIP



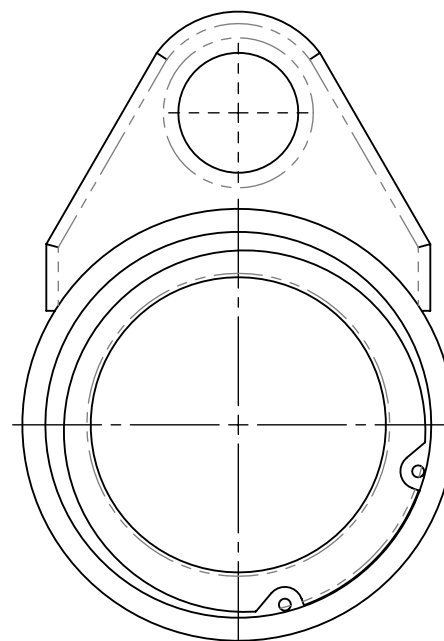
APPLY A LIGHT COATING OF MOLYKOTE BR2 PLUS GREASE TO THIS DIAMETER



SECTION A-A



ASSEMBLY INSTRUCTIONS



**DOCUMENT CONTROL**  
 PRINTED COPIES OF THIS DOCUMENT ARE CONSIDERED TO BE UNCONTROLLED DOCUMENTS. HOLDERS ARE RESPONSIBLE FOR VERIFYING THE CURRENT REVISION LEVEL WITH PURCHASING OR ENGINEERING PRIOR TO USE OR FABRICATION. THE CONTROLLED VERSION OF THIS DOCUMENT IS ELECTRONICALLY MAINTAINED.

**PROPRIETARY AND CONFIDENTIAL**  
 THIS DRAWING CONTAINS INFORMATION STRICTLY CONFIDENTIAL TO ACRADYNE/AIMCO. IN THE ABSENCE OF EXPRESSED WRITTEN PERMISSION, ACRADYNE/AIMCO HAS LOANED THIS COPY WITH THE MUTUAL UNDERSTANDING THAT (A) IT WILL NOT BE USED FOR ANY PURPOSE OTHER THAN FOR THAT IN WHICH IT WAS PROVIDED, (B) THE DATA CONTAINED HEREIN WILL NOT BE DISCLOSED TO OTHERS, (C) IT WILL NOT BE REPRODUCED, AND (D) IT WILL BE RETURNED TO ACRADYNE/AIMCO IMMEDIATELY UPON DEMAND.

REVISION LEVEL	REVISION RELEASE DATE	DESCRIPTION OF CHANGES MADE TO PART	ECN #	AUTHOR/ APPROVAL

**UNLESS OTHERWISE SPECIFIED, DIMENSIONS ARE IN INCHES**  
 DIMENSIONS AND TOLERANCING PER ANSI Y14.5  
 SURFACE ROUGHNESS PER ANSI Y14.36

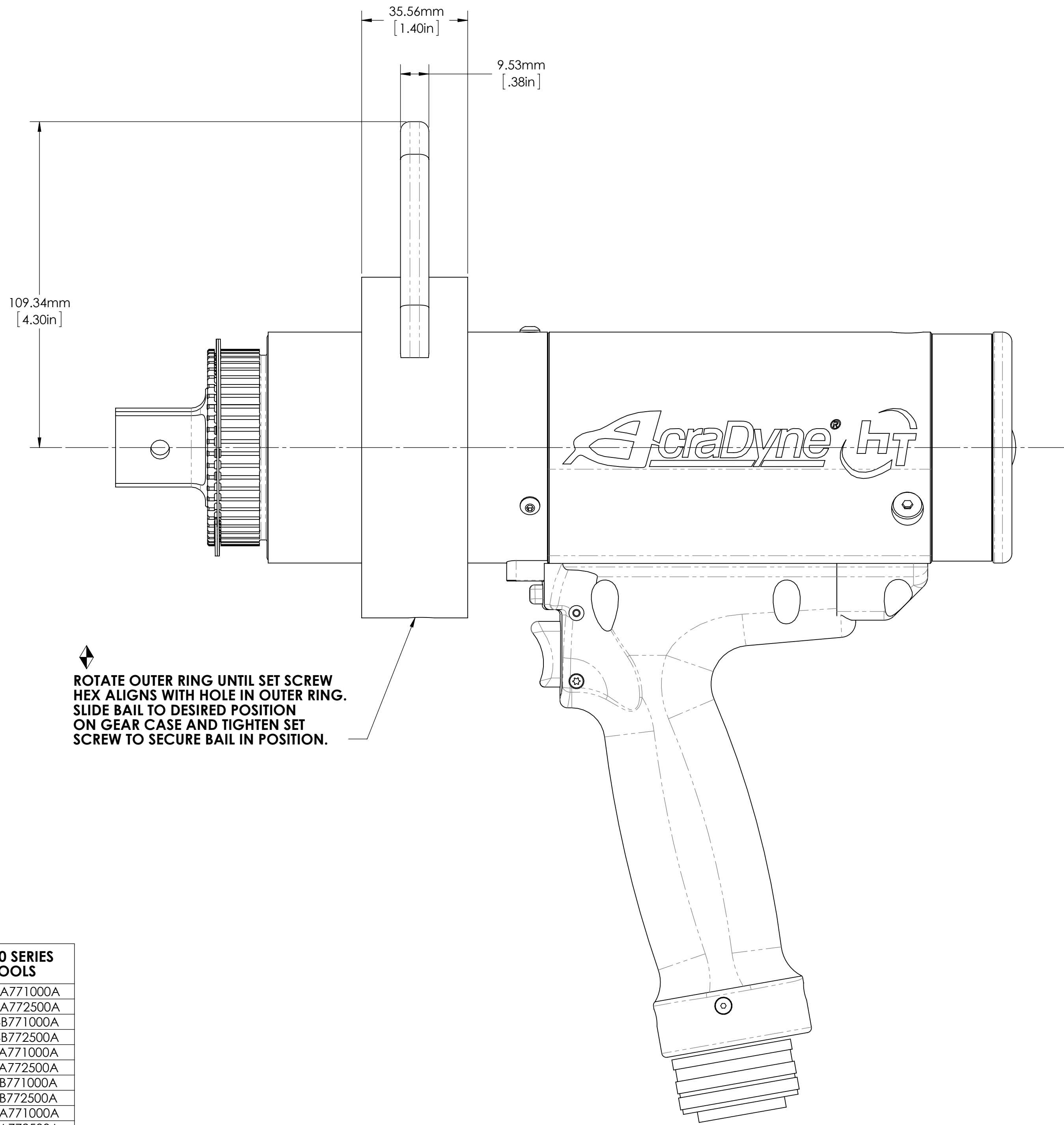
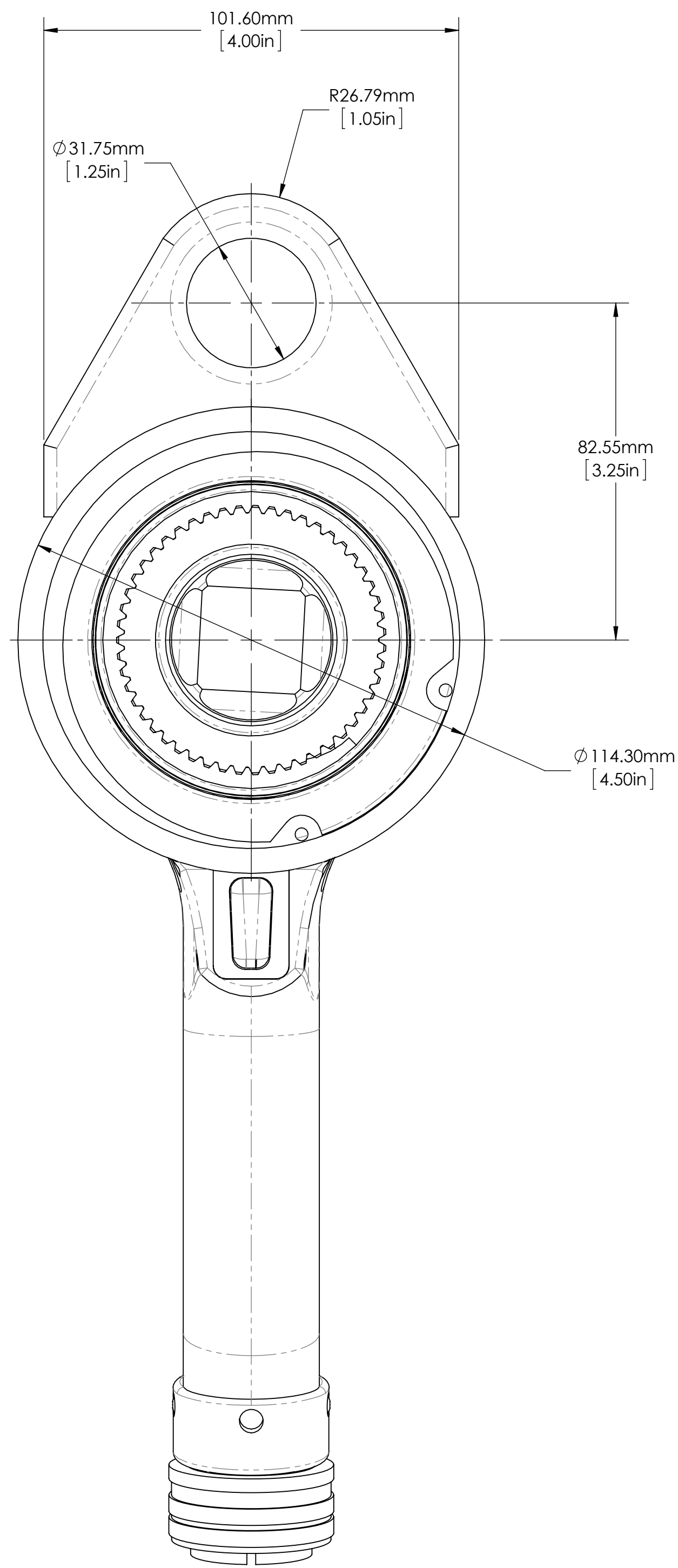
**BLOCK TOLERANCING PER DECIMAL:**  
 .X = ±.030 .XX = ±.010 .XXX = ±.005 .XXXX = ±.0005  
 ANGLE = ±0° 30'

REMOVE BURRS AND SHARP EDGES: R.015 MAX  
 MACHINE SURFACE FINISH: 125 RMS OR BETTER

**DRAWINGS AND TECHNICAL DOCUMENTS CONTROLLED BY:**  
**ACRADYNE MECHANICAL ENGINEERING**

**SWIVEL BAIL ASM. 7000 SERIES**

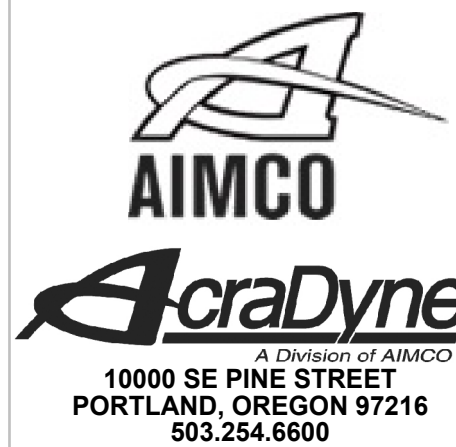
SIZE <b>B</b>	PART / DRAWING NUMBER <b>26327</b>	REVISION <b>B</b>
SCALE 1:1	DO NOT SCALE DRAWING	SHEET 1 OF 2



ROTATE OUTER RING UNTIL SET SCREW  
 HEX ALIGNS WITH HOLE IN OUTER RING.  
 SLIDE BAIL TO DESIRED POSITION  
 ON GEAR CASE AND TIGHTEN SET  
 SCREW TO SECURE BAIL IN POSITION.

**7000 SERIES TOOLS**

- AED4A771000A
- AED4A772500A
- AED4B771000A
- AED4B772500A
- AEJ4A771000A
- AEJ4A772500A
- AEJ4B771000A
- AEJ4B772500A
- AEP4A771000A
- AEP4A772500A
- AEP4B771000A
- AEP4B772500A
- AES4A771000A
- AES4A772500A
- AES4B771000A
- AES4B772500A



**DOCUMENT CONTROL**  
 PRINTED COPIES OF THIS DOCUMENT ARE CONSIDERED TO BE UNCONTROLLED DOCUMENTS. HOLDERS ARE RESPONSIBLE FOR VERIFYING THE CURRENT REVISION LEVEL WITH PURCHASING OR ENGINEERING PRIOR TO USE OR FABRICATION. THE CONTROLLED VERSION OF THIS DOCUMENT IS ELECTRONICALLY MAINTAINED.

**PROPRIETARY AND CONFIDENTIAL**  
 THIS DRAWING CONTAINS INFORMATION STRICTLY CONFIDENTIAL TO ACRADYNE/AIMCO. IN THE ABSENCE OF EXPRESSED WRITTEN PERMISSION, ACRADYNE/AIMCO HAS LOANED THIS COPY WITH THE MUTUAL UNDERSTANDING THAT (A) IT WILL NOT BE USED FOR ANY PURPOSE OTHER THAN FOR THAT IN WHICH IT WAS PROVIDED, (B) THE DATA CONTAINED HEREIN WILL NOT BE DISCLOSED TO OTHERS, (C) IT WILL NOT BE REPRODUCED, AND (D) IT WILL BE RETURNED TO ACRADYNE/AIMCO IMMEDIATELY UPON DEMAND.

REVISION LEVEL	REVISION RELEASE DATE	DESCRIPTION OF CHANGES MADE TO PART	ECN #	AUTHOR/ APPROVAL

**UNLESS OTHERWISE SPECIFIED, DIMENSIONS ARE IN INCHES**  
 DIMENSIONS AND TOLERANCING PER ANSI Y14.5  
 SURFACE ROUGHNESS PER ANSI Y14.36

**BLOCK TOLERANCING PER DECIMAL:**  
 X = ±.030 XX = ±.010 XXX = ±.005 XXXX = ±.0005  
 ANGLE = ±0° 30'

REMOVE BURRS AND SHARP EDGES: R.015 MAX  
 MACHINE SURFACE FINISH: 125 RMS OR BETTER

DRAWINGS AND TECHNICAL DOCUMENTS CONTROLLED BY:  
**ACRADYNE MECHANICAL ENGINEERING**

**SWIVEL BAIL ASM.**  
 7000 SERIES

SIZE <b>D</b>	PART / DRAWING NUMBER <b>26327</b>	REVISION <b>A</b>
SCALE 1:1	DO NOT SCALE DRAWING	SHEET 2 OF 2