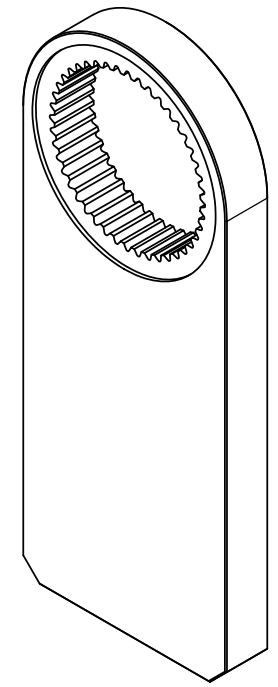
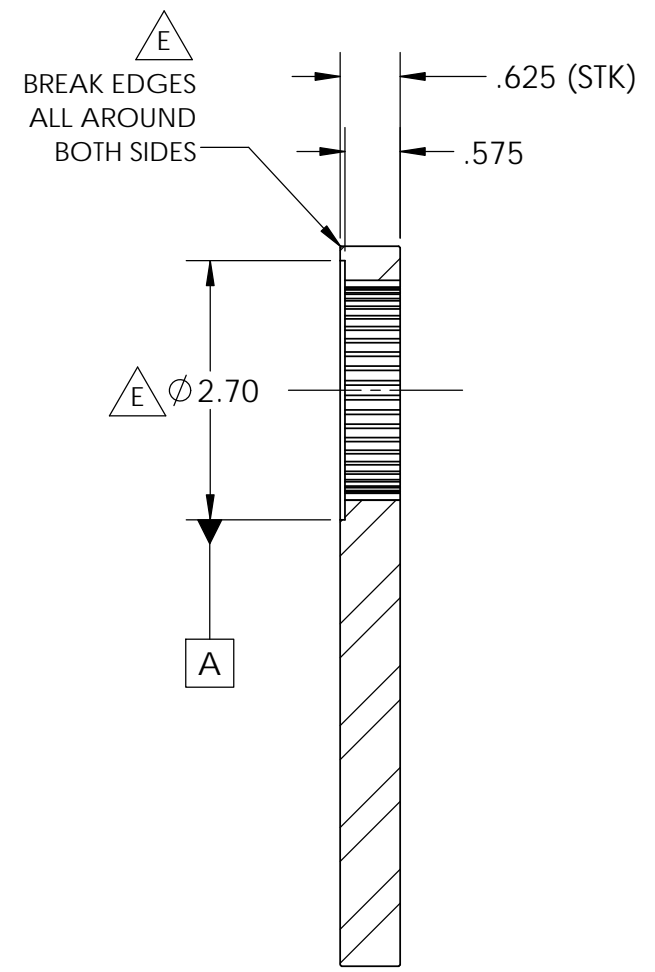
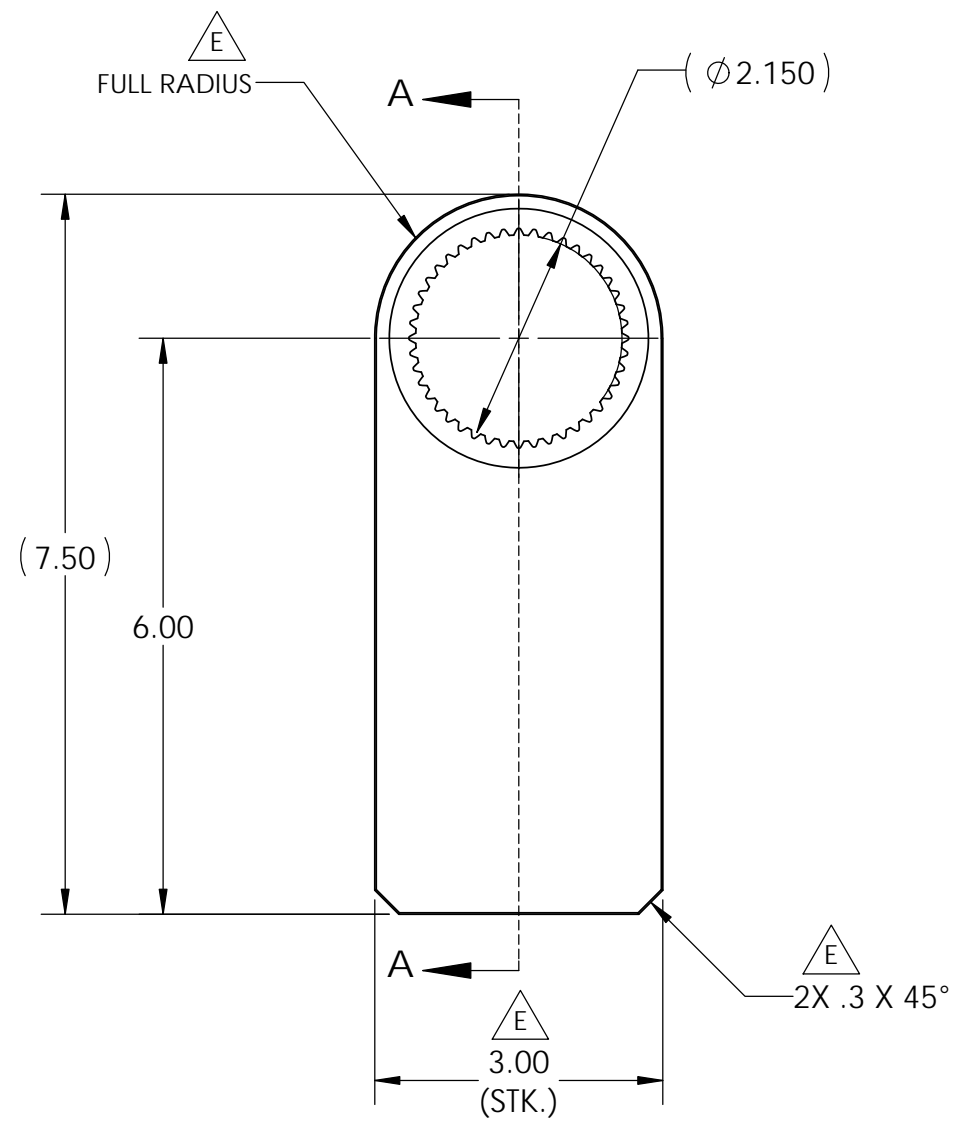


8 7 6 5 4 3 2 1

D
C
B

D
C
B



SECTION A-A

⊙ .002 A

FILLET ROOT SIDE FIT SPLINE DATA TABLE	
DIAMETRAL PITCH:	20/40
PRESSURE ANGLE:	30°
NUMBER OF TEETH:	44
PITCH Ø:	2.2000
MAJOR Ø:	2.3000
MINOR Ø:	2.1500
PIN Ø:	0.0864
DISTANCE BETWEEN PINS:	2.0817 +.0000 -.0025
DIMENSIONS AND TOLERANCE PER ANSI B92.1	

MATERIAL: AISI 4140HT STEEL

HEAT TREAT: PRE-HEAT TREAT, 27-32 HRC REF.

△ E FINISH: PAINT OR POWDERCOAT OSHA YELLOW - MASK INTERNAL GEAR

MATING PART: ACRADYNE P/N 26497

A

A



DOCUMENT CONTROL
PRINTED COPIES OF THIS DOCUMENT ARE CONSIDERED TO BE UNCONTROLLED DOCUMENTS. HOLDERS ARE RESPONSIBLE FOR VERIFYING THE CURRENT REVISION LEVEL WITH PURCHASING OR ENGINEERING PRIOR TO USE OR FABRICATION. THE CONTROLLED VERSION OF THIS DOCUMENT IS ELECTRONICALLY MAINTAINED.

PROPRIETARY AND CONFIDENTIAL
THIS DRAWING CONTAINS INFORMATION STRICTLY CONFIDENTIAL TO ACRADYNE/AIMCO. IN THE ABSENCE OF EXPRESSED WRITTEN PERMISSION, ACRADYNE/AIMCO HAS LOANED THIS COPY WITH THE MUTUAL UNDERSTANDING THAT (A) IT WILL NOT BE USED FOR ANY PURPOSE OTHER THAN FOR THAT IN WHICH IT WAS PROVIDED, (B) THE DATA CONTAINED HEREIN WILL NOT BE DISCLOSED TO OTHERS, (C) IT WILL NOT BE REPRODUCED, AND (D) IT WILL BE RETURNED TO ACRADYNE/AIMCO IMMEDIATELY UPON DEMAND.

REVISION LEVEL	REVISION RELEASE DATE	DESCRIPTION OF CHANGES MADE TO PART	ECN #	AUTHOR/ APPROVAL

UNLESS OTHERWISE SPECIFIED, DIMENSIONS ARE IN INCHES
DIMENSIONS AND TOLERANCING PER ANSI Y14.5
SURFACE ROUGHNESS PER ANSI Y14.36

BLOCK TOLERANCING PER DECIMAL:
.X = ±.030 .XX = ±.010 .XXX = ±.005 .XXXX = ±.0005
ANGLE = ±0° 30'

REMOVE BURRS AND SHARP EDGES: R.015 MAX
MACHINE SURFACE FINISH: 125 RMS OR BETTER

DRAWINGS AND TECHNICAL DOCUMENTS CONTROLLED BY:
ACRADYNE MECHANICAL ENGINEERING

REACTION BAR, FLAT STANDARD
6000-SERIES

SIZE B	PART / DRAWING NUMBER 26810	REVISION E
SCALE 1:2	DO NOT SCALE DRAWING	SHEET 1 OF 1

8 7 6 5 4 3 2 1