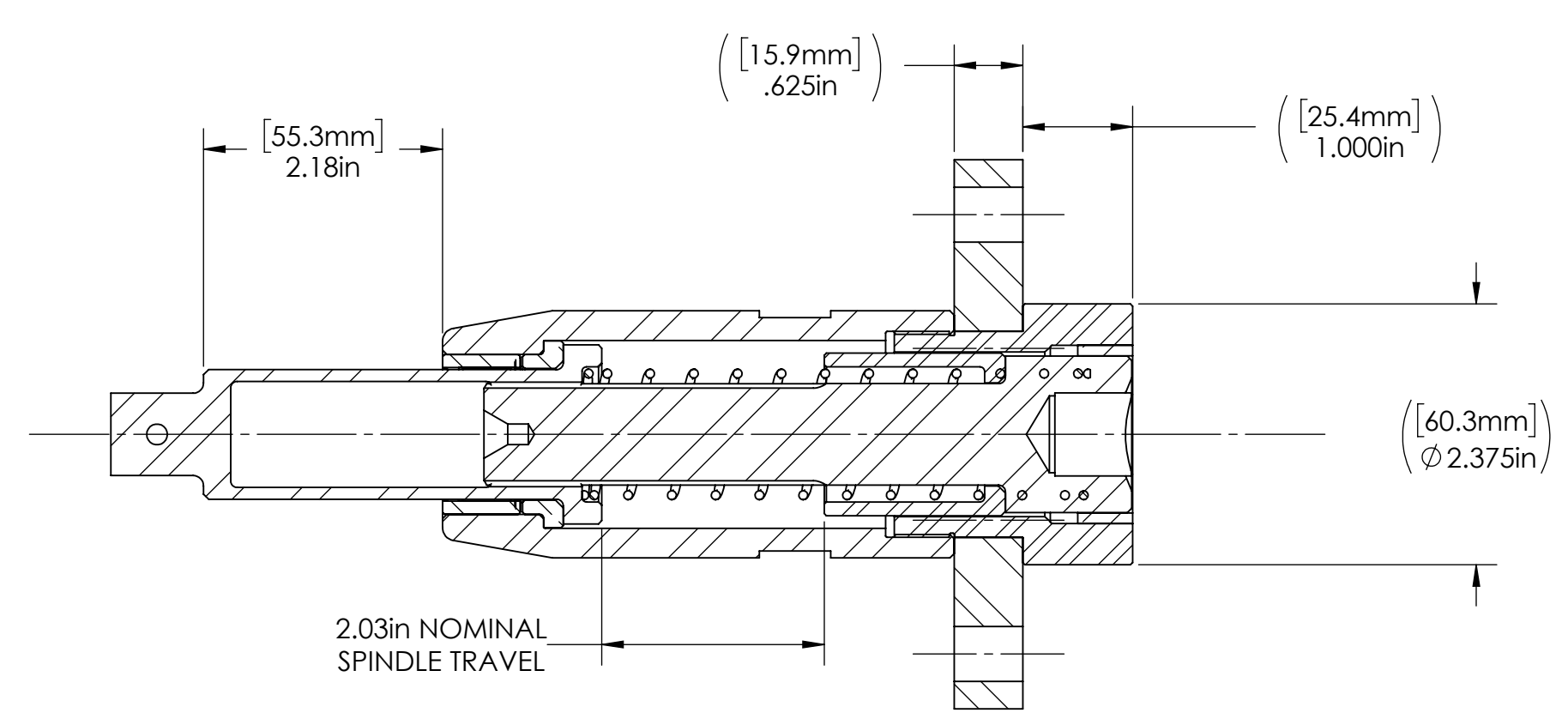
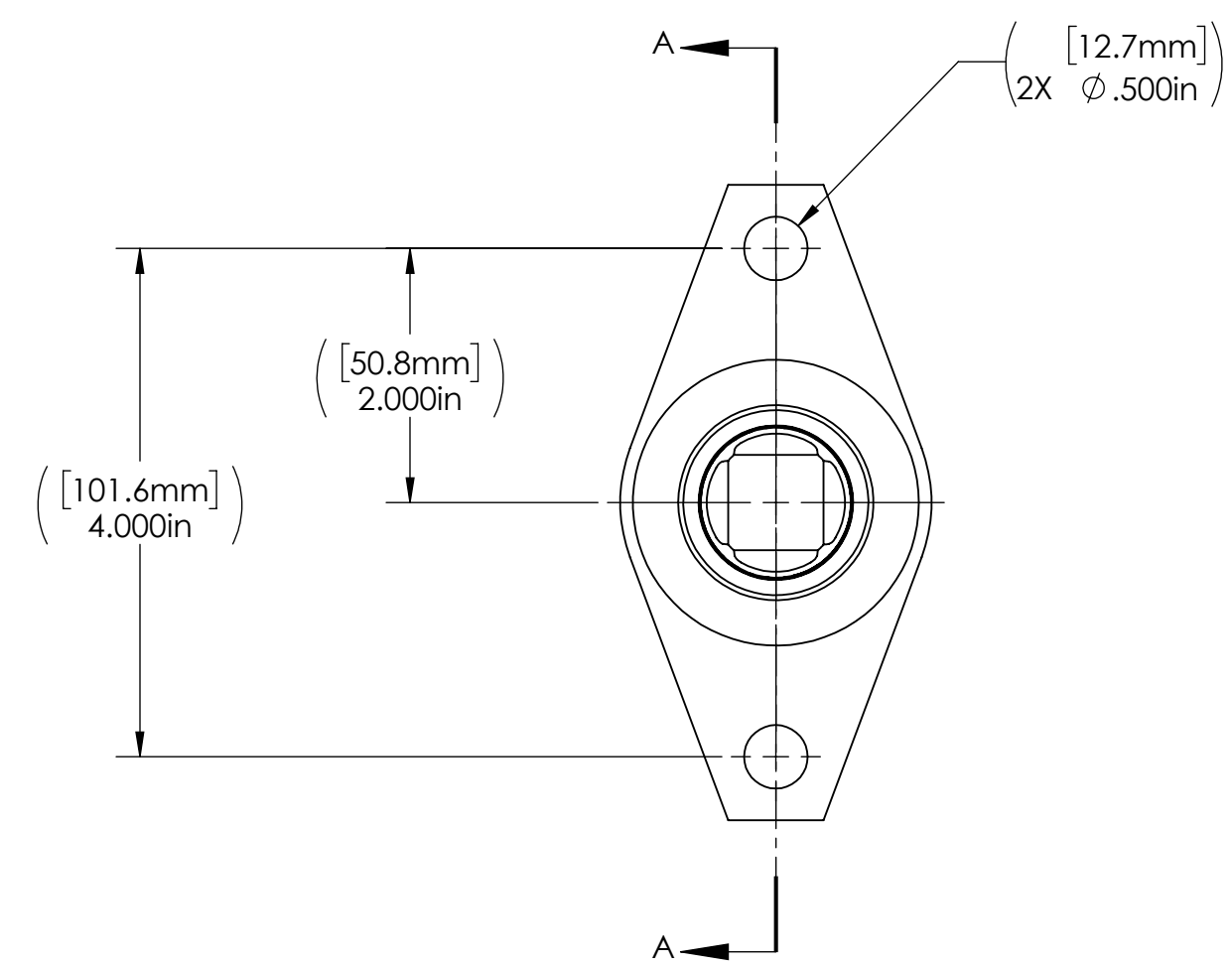
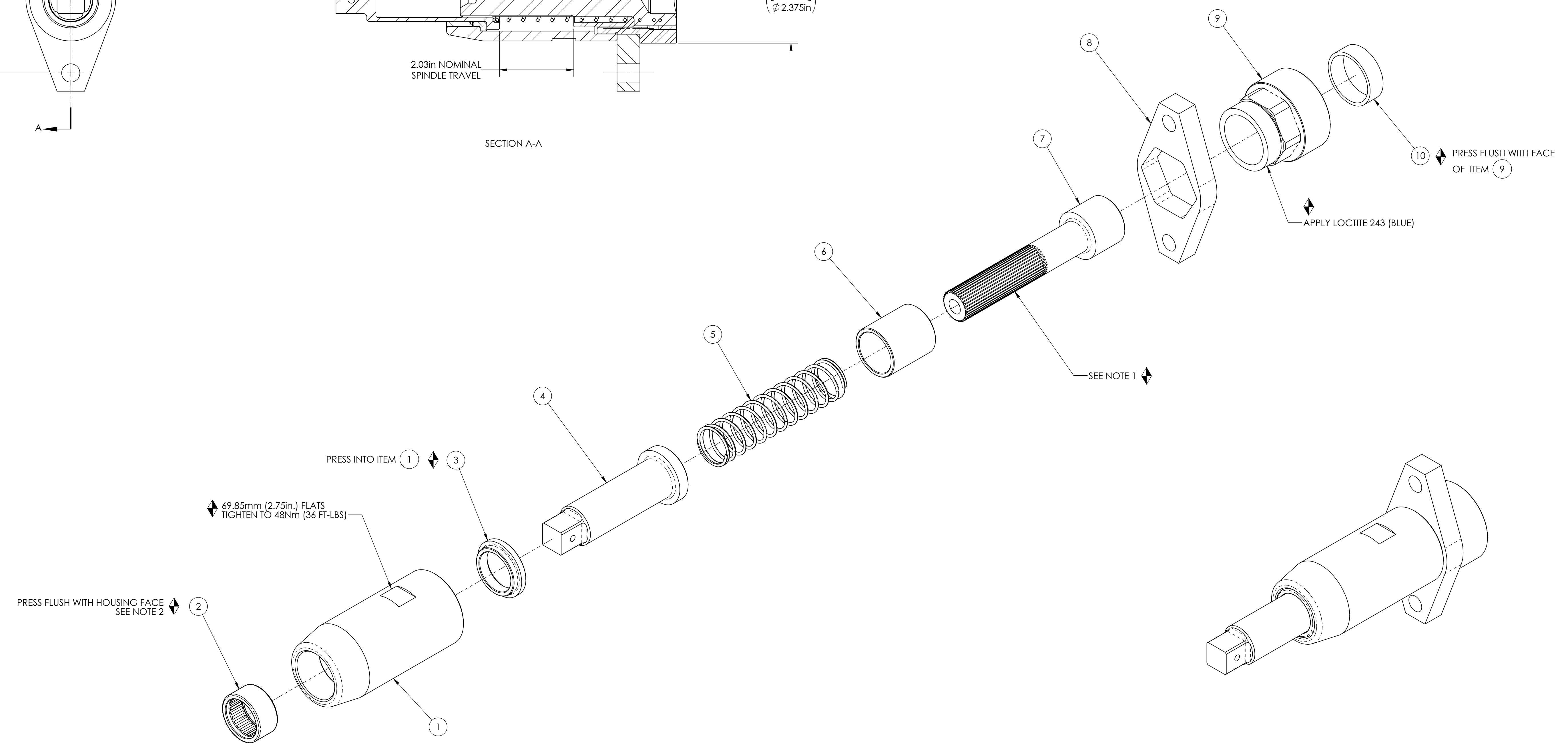


COMMENTS	ITEM NO.	PART NUMBER	QTY.	DESCRIPTION
	1	28840	1	HOUSING
	2	26498	1	BEARING, NEEDLE, Ø37mm X Ø30mm X 18mm
	3	28544	1	BUSHING
	4	28539	1	OUTPUT SPINDLE
	5	28540	1	COMPRESSION SPRING
	6	28543	1	SPRING RETAINER
	7	28538	1	INPUT SPINDLE
	8	28842	1	MOUNTING FLANGE
	9	28839	1	ADAPTER
	10	28841	1	BEARING



SECTION A-A



◆ ASSEMBLY INSTRUCTIONS
 ◻ SUB-ASSEMBLY

- 1) GEARS & SPLINES: LUBRICATE WITH DOW CORNING MOLYKOTE BR2 PLUS GREASE.
- 2) BEARINGS: LUBRICATE WITH CHEVRON SR1 GREASE
- 3) O-RINGS: LUBRICATE WITH O-RING LUBE

DOCUMENT CONTROL
 PRINTED COPIES OF THIS DOCUMENT ARE CONSIDERED TO BE UNCONTROLLED DOCUMENTS. HOLDERS ARE RESPONSIBLE FOR VERIFYING THE CURRENT REVISION LEVEL WITH PURCHASING OR ENGINEERING PRIOR TO USE OR FABRICATION. THE CONTROLLED VERSION OF THIS DOCUMENT IS ELECTRONICALLY MAINTAINED.

PROPRIETARY AND CONFIDENTIAL
 THIS DRAWING CONTAINS INFORMATION STRICTLY CONFIDENTIAL TO ACRADYNE/AIMCO. IN THE ABSENCE OF EXPRESSED WRITTEN PERMISSION, ACRADYNE/AIMCO HAS LOANED THIS COPY WITH THE MUTUAL UNDERSTANDING THAT (A) IT WILL NOT BE USED FOR ANY PURPOSE OTHER THAN FOR THAT IN WHICH IT WAS PROVIDED, (B) THE DATA CONTAINED HEREIN WILL NOT BE DISCLOSED TO OTHERS, (C) IT WILL NOT BE REPRODUCED, AND (D) IT WILL BE RETURNED TO ACRADYNE/AIMCO IMMEDIATELY UPON DEMAND.

REVISION LEVEL	REVISION RELEASE DATE	DESCRIPTION OF CHANGES MADE TO PART	ECN #	AUTHOR/ APPROVAL

UNLESS OTHERWISE SPECIFIED, DIMENSIONS ARE IN INCHES
 DIMENSIONS AND TOLERANCING PER ANSI Y14.5
 SURFACE ROUGHNESS PER ANSI Y14.36

BLOCK TOLERANCING PER DECIMAL:
 .X = ±.030 .XX = ±.010 .XXX = ±.005 .XXXX = ±.0005
 ANGLE = ±0° 30'

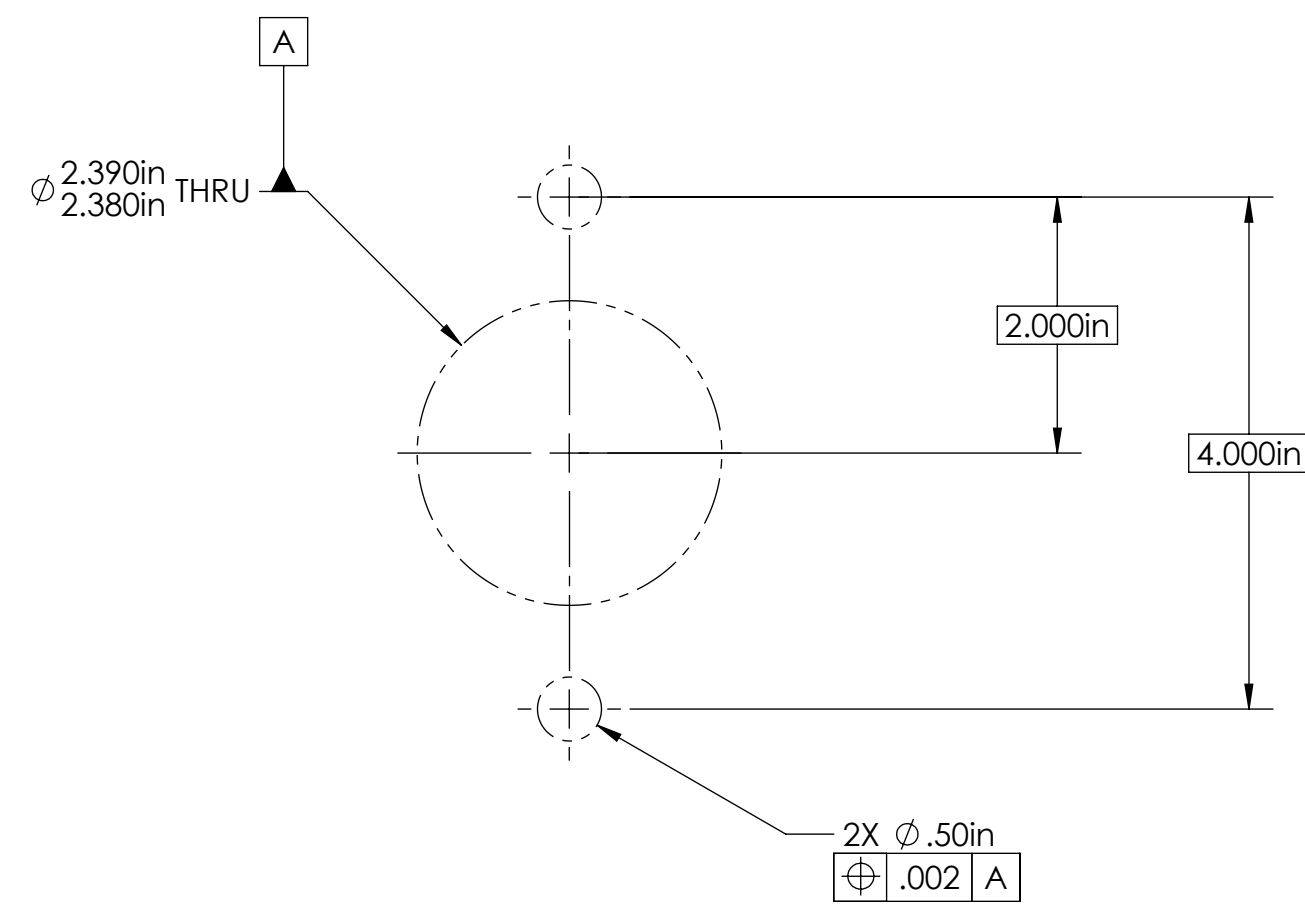
REMOVE BURRS AND SHARP EDGES: R.015 MAX
 MACHINE SURFACE FINISH: 125 RMS OR BETTER

DRAWINGS AND TECHNICAL DOCUMENTS CONTROLLED BY:
ACRADYNE MECHANICAL ENGINEERING

SLIDING SPINDLE ASSY
 5000 SERIES

SIZE	PART / DRAWING NUMBER	REVISION
D	28843	B

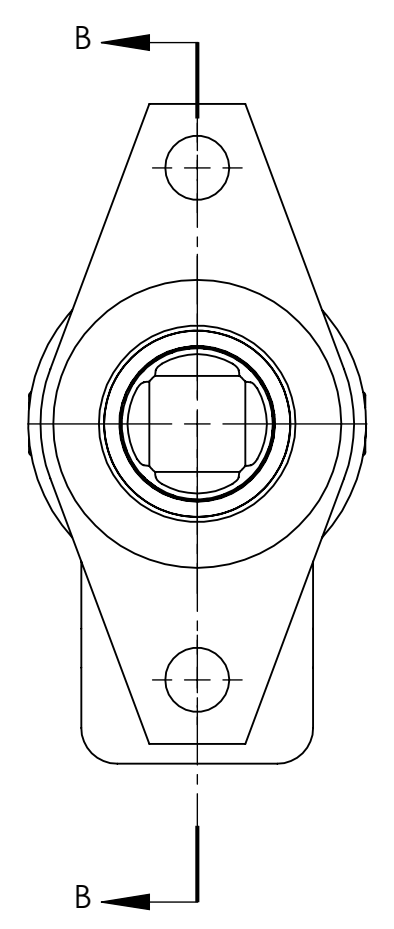
SCALE 2:3 DO NOT SCALE DRAWING SHEET 1 OF 2



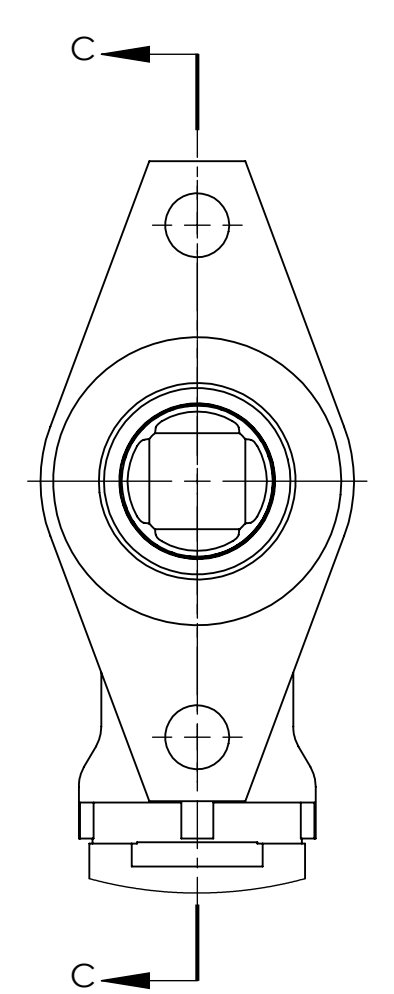
REQUIRED DIMENSIONS FOR CUSTOMER MOUNTING PLATE

B MOUNTING PLATE TO BE FROM MILD STEEL OR STRONGER. MOUNTING PLATE CAN BE ON EITHER SIDE OF SPINDLE FLANGE.

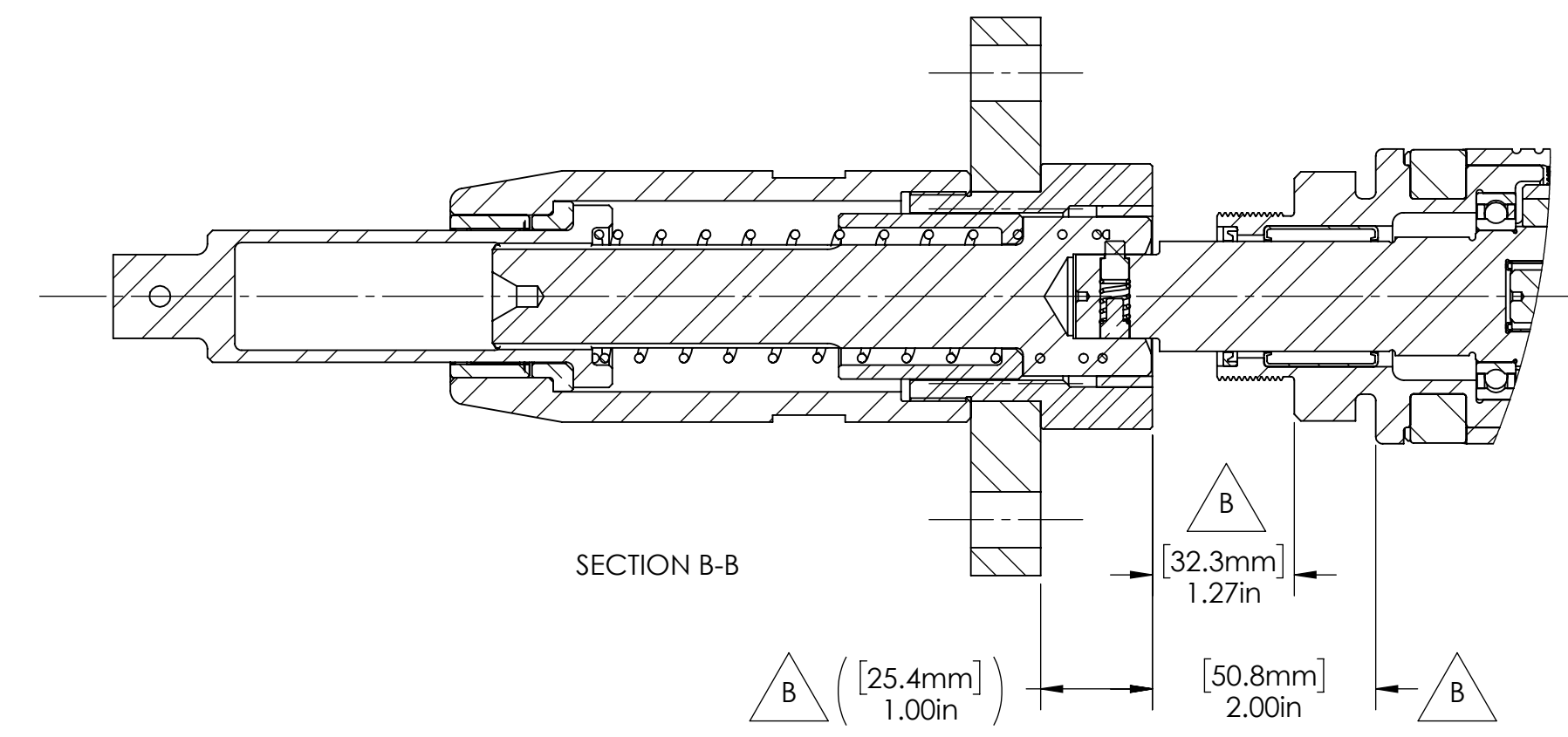
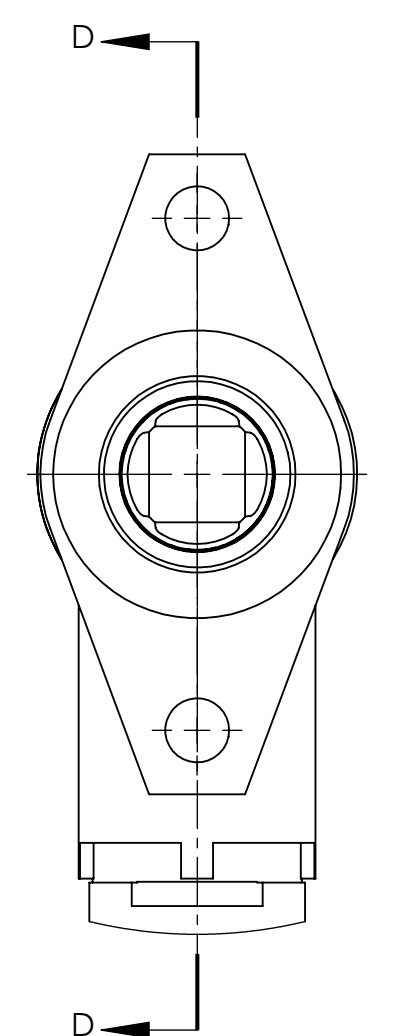
SPACING FOR STRAIGHT AND FIXTURED TOOLS. SEE DRAWING AES35280A FOR TOOL-SPECIFIC DIMENSIONS & MOUNTING DETAILS



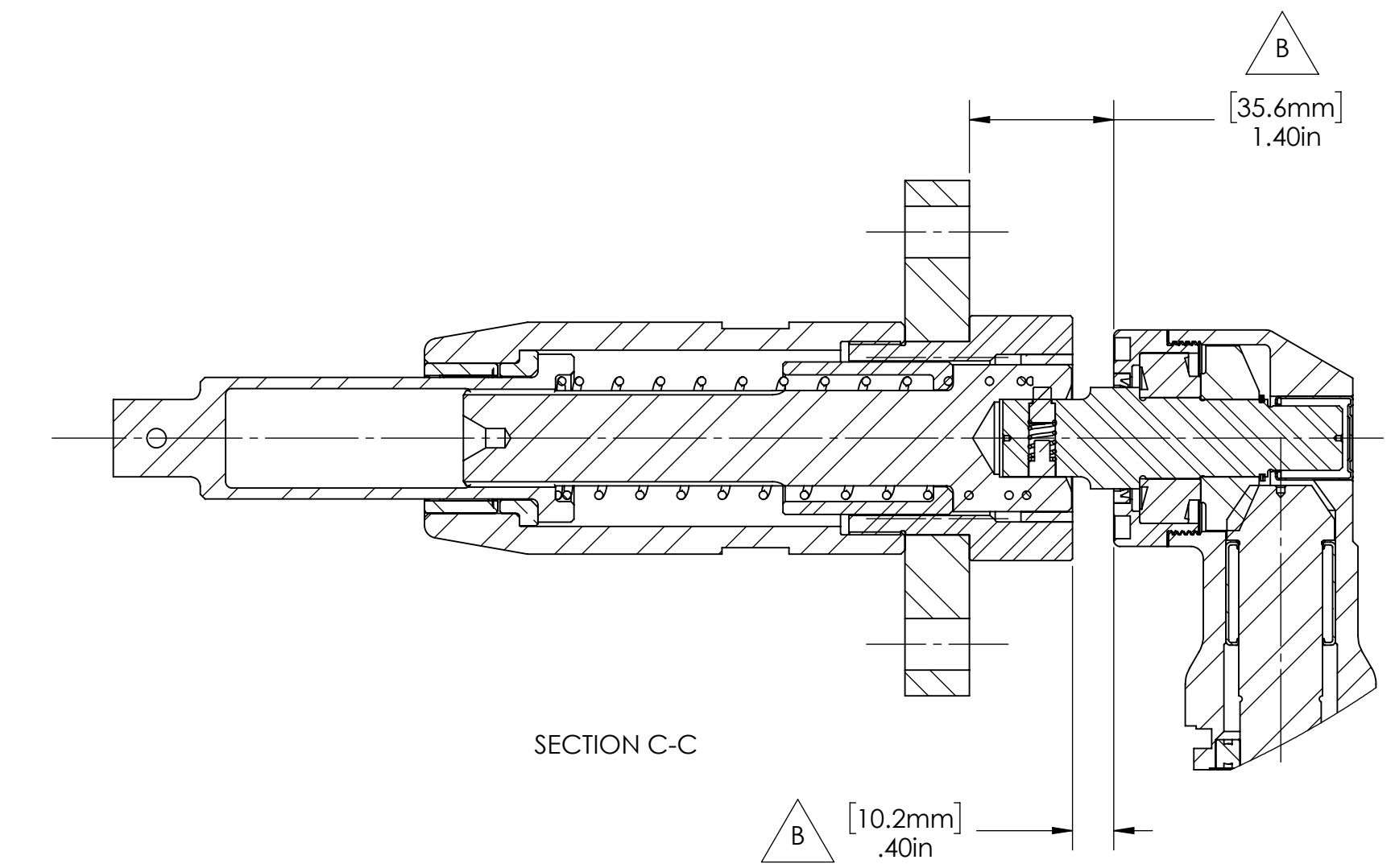
SPACING FOR ANGLE TOOLS UP TO 175Nm. SEE DRAWING AEN35175B FOR TOOL-SPECIFIC DIMENSIONS & MOUNTING DETAILS



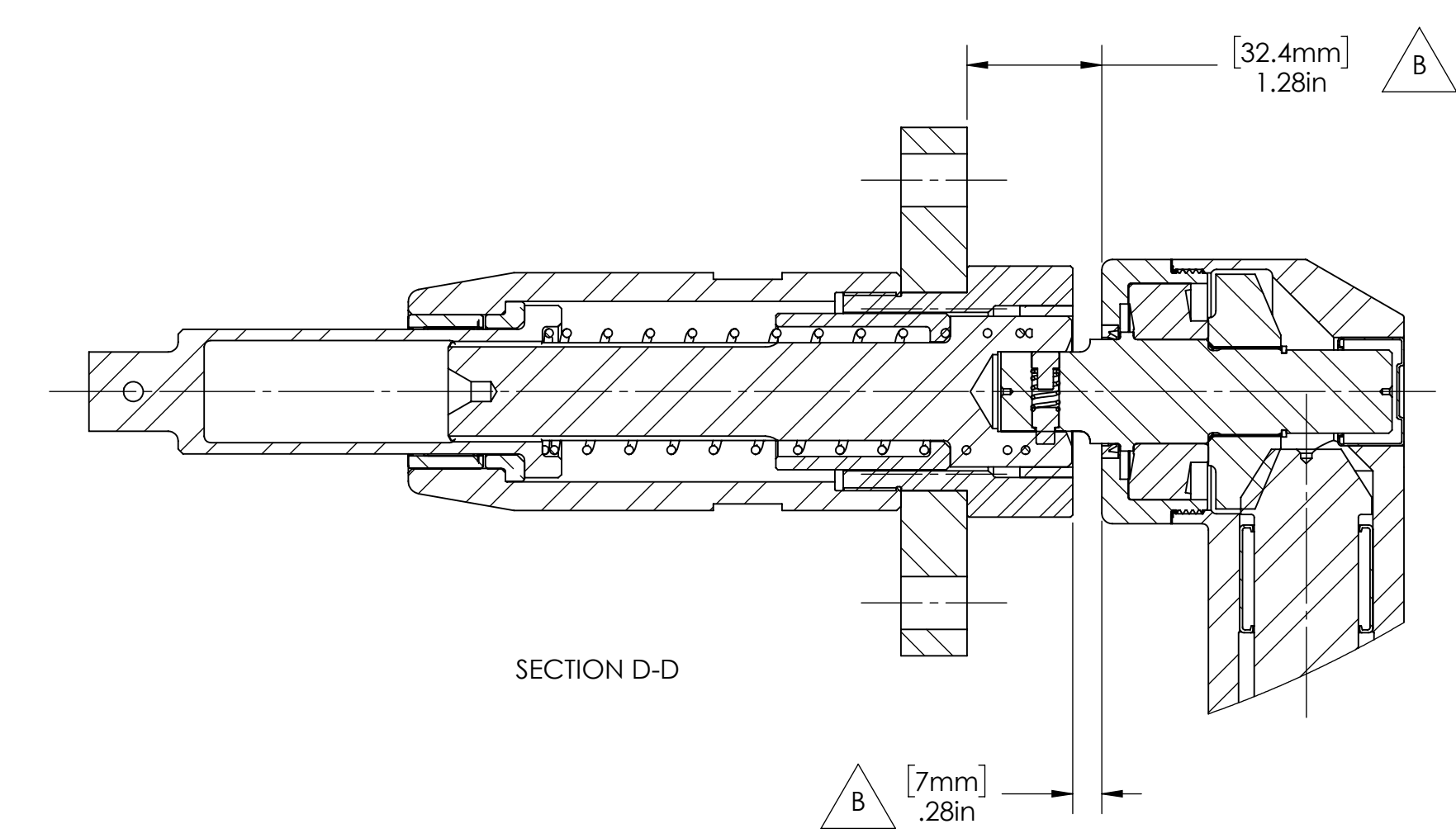
SPACING FOR ANGLE TOOLS UP TO 375Nm. SEE DRAWING AEN35350B FOR TOOL SPECIFIC DIMENSIONS & MOUNTING DETAILS



SECTION B-B



SECTION C-C



SECTION D-D



DOCUMENT CONTROL
 PRINTED COPIES OF THIS DOCUMENT ARE CONSIDERED TO BE UNCONTROLLED DOCUMENTS. HOLDERS ARE RESPONSIBLE FOR VERIFYING THE CURRENT REVISION LEVEL WITH PURCHASING OR ENGINEERING PRIOR TO USE OR FABRICATION. THE CONTROLLED VERSION OF THIS DOCUMENT IS ELECTRONICALLY MAINTAINED.

PROPRIETARY AND CONFIDENTIAL
 THIS DRAWING CONTAINS INFORMATION STRICTLY CONFIDENTIAL TO ACRADYNE/AIMCO. IN THE ABSENCE OF EXPRESSED WRITTEN PERMISSION, ACRADYNE/AIMCO HAS LOANED THIS COPY WITH THE MUTUAL UNDERSTANDING THAT (A) IT WILL NOT BE USED FOR ANY PURPOSE OTHER THAN FOR THAT IN WHICH IT WAS PROVIDED, (B) THE DATA CONTAINED HEREIN WILL NOT BE DISCLOSED TO OTHERS, (C) IT WILL NOT BE REPRODUCED, AND (D) IT WILL BE RETURNED TO ACRADYNE/AIMCO IMMEDIATELY UPON DEMAND.

REVISION LEVEL	REVISION RELEASE DATE	DESCRIPTION OF CHANGES MADE TO PART	ECN #	AUTHOR / APPROVAL

UNLESS OTHERWISE SPECIFIED, DIMENSIONS ARE IN INCHES
 DIMENSIONS AND TOLERANCING PER ANSI Y14.5
 SURFACE ROUGHNESS PER ANSI Y14.36

BLOCK TOLERANCING PER DECIMAL:
 .X = ±.030 .XX = ±.010 .XXX = ±.005 .XXXX = ±.0005
 ANGLE = ±0° 30'

REMOVE BURRS AND SHARP EDGES: R.015 MAX
 MACHINE SURFACE FINISH: 125 RMS OR BETTER

DRAWINGS AND TECHNICAL DOCUMENTS CONTROLLED BY:
ACRADYNE MECHANICAL ENGINEERING

SLIDING SPINDLE ASSY 5000 SERIES		
SIZE D	PART / DRAWING NUMBER 28843	REVISION B
SCALE: 2:3	DO NOT SCALE DRAWING	SHEET 2 OF 2