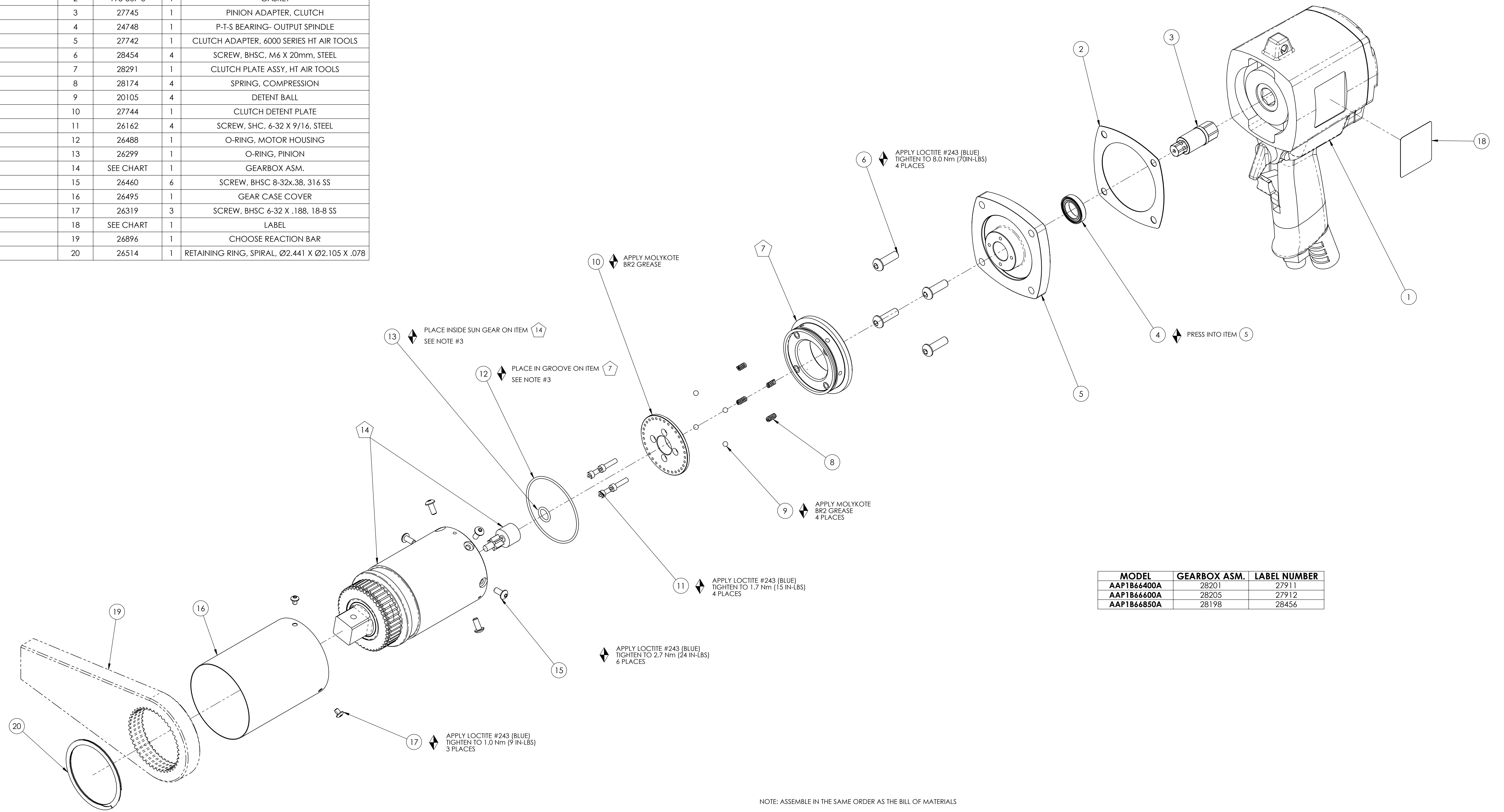


COMMENTS	ITEM NO.	PART NUMBER	QTY.	DESCRIPTION
	1	UX-1620(142T4)	1	HANDLE & MOTOR ASSY.
	2	195-867-3	1	GASKET
	3	27745	1	PINION ADAPTER, CLUTCH
	4	24748	1	P-T-S BEARING- OUTPUT SPINDLE
	5	27742	1	CLUTCH ADAPTER, 6000 SERIES HT AIR TOOLS
	6	28454	4	SCREW, BHSC, M6 X 20mm, STEEL
	7	28291	1	CLUTCH PLATE ASSY, HT AIR TOOLS
	8	28174	4	SPRING, COMPRESSION
	9	20105	4	DETENT BALL
	10	27744	1	CLUTCH DETENT PLATE
	11	26162	4	SCREW, SHC, 6-32 X 9/16, STEEL
	12	26488	1	O-RING, MOTOR HOUSING
	13	26299	1	O-RING, PINION
	14	SEE CHART	1	GEARBOX ASM.
	15	26460	6	SCREW, BHSC 8-32x.38, 316 SS
	16	26495	1	GEAR CASE COVER
	17	26319	3	SCREW, BHSC 6-32 X .188, 18-8 SS
	18	SEE CHART	1	LABEL
	19	26896	1	CHOOSE REACTION BAR
	20	26514	1	RETAINING RING, SPIRAL, Ø2.441 X Ø2.105 X .078



10 ▲ APPLY MOLYKOTE BR2 GREASE

11 ▲ APPLY LOCTITE #243 (BLUE) TIGHTEN TO 1.7 Nm (15 IN-LBS) 4 PLACES

12 ▲ PLACE IN GROOVE ON ITEM 7 SEE NOTE #3

13 ▲ PLACE INSIDE SUN GEAR ON ITEM 14 SEE NOTE #3

14 ▲ PLACE INSIDE SUN GEAR ON ITEM 14 SEE NOTE #3

15 ▲ APPLY LOCTITE #243 (BLUE) TIGHTEN TO 2.7 Nm (24 IN-LBS) 6 PLACES

16 ▲ APPLY LOCTITE #243 (BLUE) TIGHTEN TO 1.0 Nm (9 IN-LBS) 3 PLACES

17 ▲ APPLY LOCTITE #243 (BLUE) TIGHTEN TO 8.0 Nm (70IN-LBS) 4 PLACES

18 ▲ PRESS INTO ITEM 5

MODEL	GEARBOX ASM.	LABEL NUMBER
AAP1B66400A	28201	27911
AAP1B66600A	28205	27912
AAP1B66850A	28198	28456

NOTE: ASSEMBLE IN THE SAME ORDER AS THE BILL OF MATERIALS

▲ ASSEMBLY INSTRUCTIONS  
 ▽ SUB-ASSEMBLY

- 1) GEARS & SPLINES: LUBRICATE WITH DOW CORNING MOLYKOTE BR2 PLUS GREASE.
- 2) BEARINGS: LUBRICATE WITH CHEVRON SR1 GREASE
- 3) O-RINGS: LUBRICATE WITH O-RING LUBE



**DOCUMENT CONTROL**  
 PRINTED COPIES OF THIS DOCUMENT ARE CONSIDERED TO BE UNCONTROLLED DOCUMENTS. HOLDERS ARE RESPONSIBLE FOR VERIFYING THE CURRENT REVISION LEVEL WITH PURCHASING OR ENGINEERING PRIOR TO USE OR FABRICATION. THE CONTROLLED VERSION OF THIS DOCUMENT IS ELECTRONICALLY MAINTAINED.

**PROPRIETARY AND CONFIDENTIAL**  
 THIS DRAWING CONTAINS INFORMATION STRICTLY CONFIDENTIAL TO ACRADYNE/AIMCO. IN THE ABSENCE OF EXPRESSED WRITTEN PERMISSION, ACRADYNE/AIMCO HAS LOANED THIS COPY WITH THE MUTUAL UNDERSTANDING THAT (A) IT WILL NOT BE USED FOR ANY PURPOSE OTHER THAN FOR THAT IN WHICH IT WAS PROVIDED, (B) THE DATA CONTAINED HEREIN WILL NOT BE DISCLOSED TO OTHERS, (C) IT WILL NOT BE REPRODUCED, AND (D) IT WILL BE RETURNED TO ACRADYNE/AIMCO IMMEDIATELY UPON DEMAND.

REVISION LEVEL	REVISION RELEASE DATE	DESCRIPTION OF CHANGES MADE TO PART	ECN #	AUTHOR / APPROVAL
<b>REVISION BLOCK</b>				

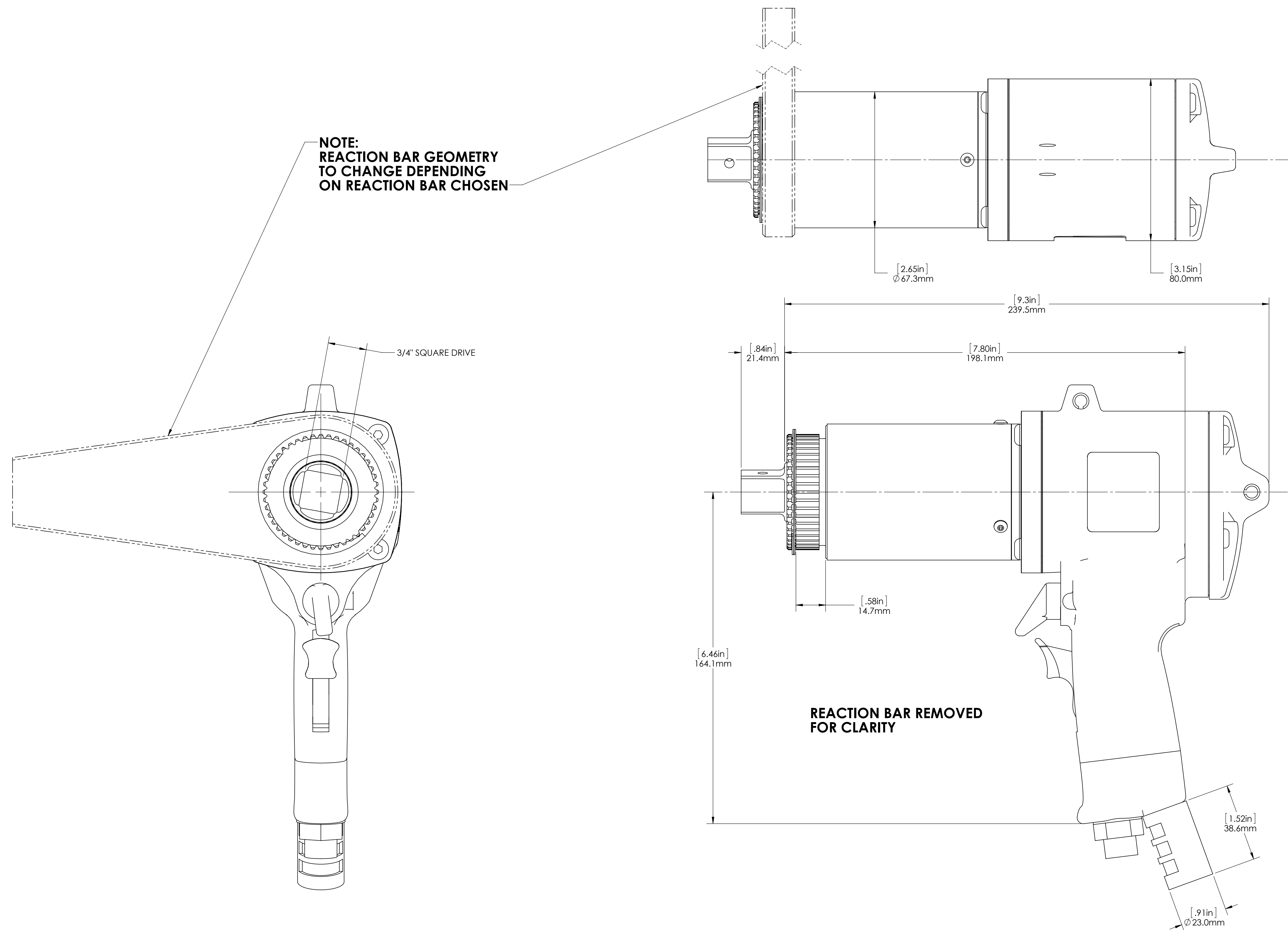
**UNLESS OTHERWISE SPECIFIED, DIMENSIONS ARE IN INCHES**  
 DIMENSIONS AND TOLERANCING PER ANSI Y14.5  
 SURFACE ROUGHNESS PER ANSI Y14.36

**BLOCK TOLERANCING PER DECIMAL:**  
 .X = ±.030 .XX = ±.010 .XXX = ±.005 .XXXX = ±.0005  
 ANGLE = ±0° 30'

REMOVE BURRS AND SHARP EDGES: R.015 MAX  
 MACHINE SURFACE FINISH: 125 RMS OR BETTER

DRAWINGS AND TECHNICAL DOCUMENTS CONTROLLED BY:  
**ACRADYNE MECHANICAL ENGINEERING**

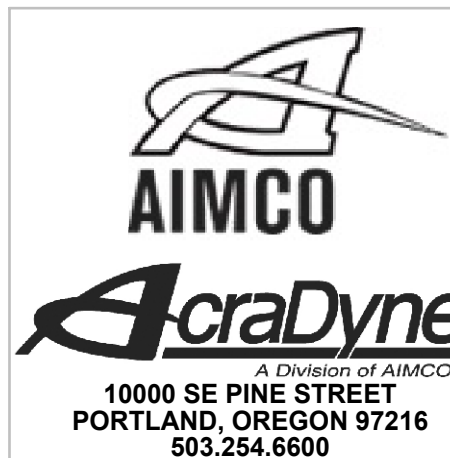
<b>HT AIR PISTOL NUTRUNNER</b>		
<b>6000 SERIES</b>		
SIZE	PART / DRAWING NUMBER	REVISION
<b>D</b>	<b>AAP1B66__A</b>	<b>A</b>
SCALE 2:3	DO NOT SCALE DRAWING	SHEET 1 OF 2



**NOTE:  
REACTION BAR GEOMETRY  
TO CHANGE DEPENDING  
ON REACTION BAR CHOSEN**

3/4" SQUARE DRIVE

**REACTION BAR REMOVED  
FOR CLARITY**



**DOCUMENT CONTROL**  
PRINTED COPIES OF THIS DOCUMENT ARE CONSIDERED TO BE UNCONTROLLED DOCUMENTS. HOLDERS ARE RESPONSIBLE FOR VERIFYING THE CURRENT REVISION LEVEL WITH PURCHASING OR ENGINEERING PRIOR TO USE OR FABRICATION. THE CONTROLLED VERSION OF THIS DOCUMENT IS ELECTRONICALLY MAINTAINED.

**PROPRIETARY AND CONFIDENTIAL**  
THIS DRAWING CONTAINS INFORMATION STRICTLY CONFIDENTIAL TO ACRADYNE/AIMCO. IN THE ABSENCE OF EXPRESSED WRITTEN PERMISSION, ACRADYNE/AIMCO HAS LOANED THIS COPY WITH THE MUTUAL UNDERSTANDING THAT (A) IT WILL NOT BE USED FOR ANY PURPOSE OTHER THAN FOR THAT IN WHICH IT WAS PROVIDED, (B) THE DATA CONTAINED HEREIN WILL NOT BE DISCLOSED TO OTHERS, (C) IT WILL NOT BE REPRODUCED, AND (D) IT WILL BE RETURNED TO ACRADYNE/AIMCO IMMEDIATELY UPON DEMAND.

REVISION LEVEL	REVISION RELEASE DATE	DESCRIPTION OF CHANGES MADE TO PART	ECN #	AUTHOR/ APPROVAL
<b>REVISION BLOCK</b>				

**UNLESS OTHERWISE SPECIFIED,  
DIMENSIONS ARE IN INCHES**  
DIMENSIONS AND TOLERANCING PER ANSI Y14.5  
SURFACE ROUGHNESS PER ANSI Y14.36

**BLOCK TOLERANCING PER DECIMAL:**  
X = ±.030 XX = ±.010 XXX = ±.005 XXXX = ±.0005  
ANGLE = ±0° 30'

REMOVE BURRS AND SHARP EDGES: R.015 MAX  
MACHINE SURFACE FINISH: 125 RMS OR BETTER  
DRAWINGS AND TECHNICAL DOCUMENTS CONTROLLED BY:  
**ACRADYNE MECHANICAL ENGINEERING**

**HT AIR PISTOL NUTRUNNER**  
6000 SERIES

SIZE	PART / DRAWING NUMBER	REVISION
<b>D</b>	<b>AAP1B66 _ _ A</b>	<b>A</b>
SCALE 1:1	DO NOT SCALE DRAWING	SHEET 2 OF 2