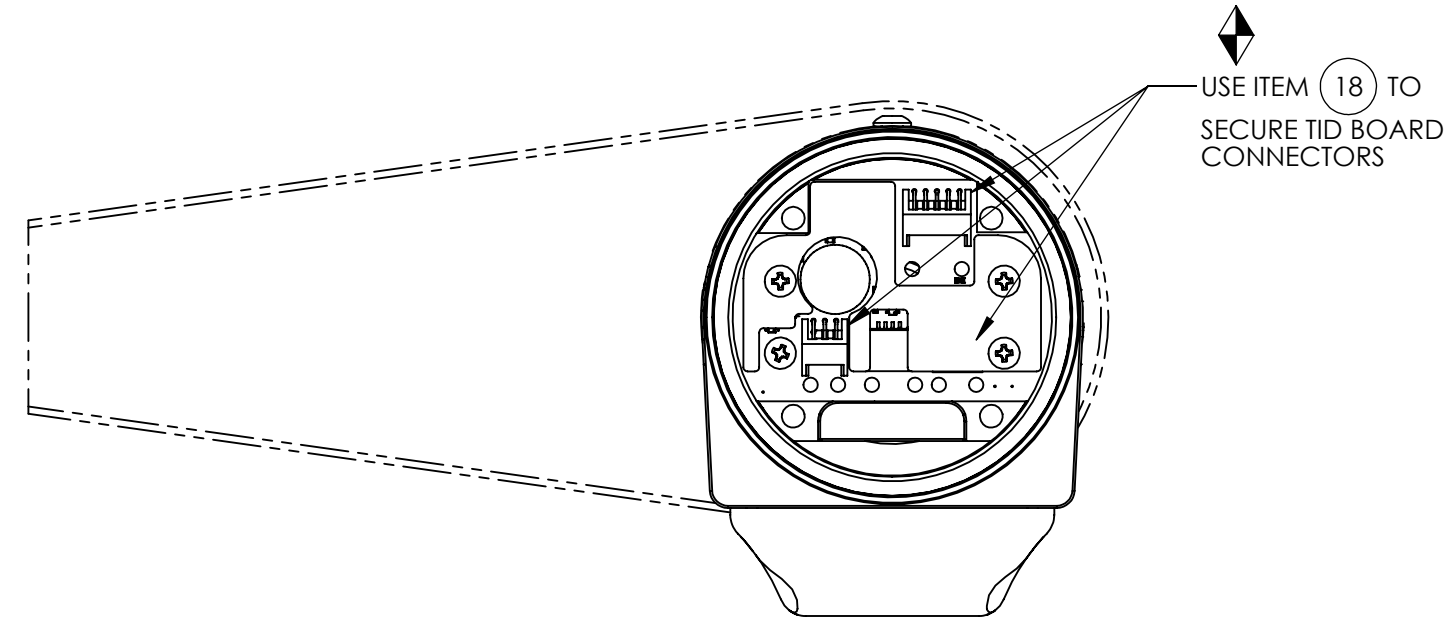
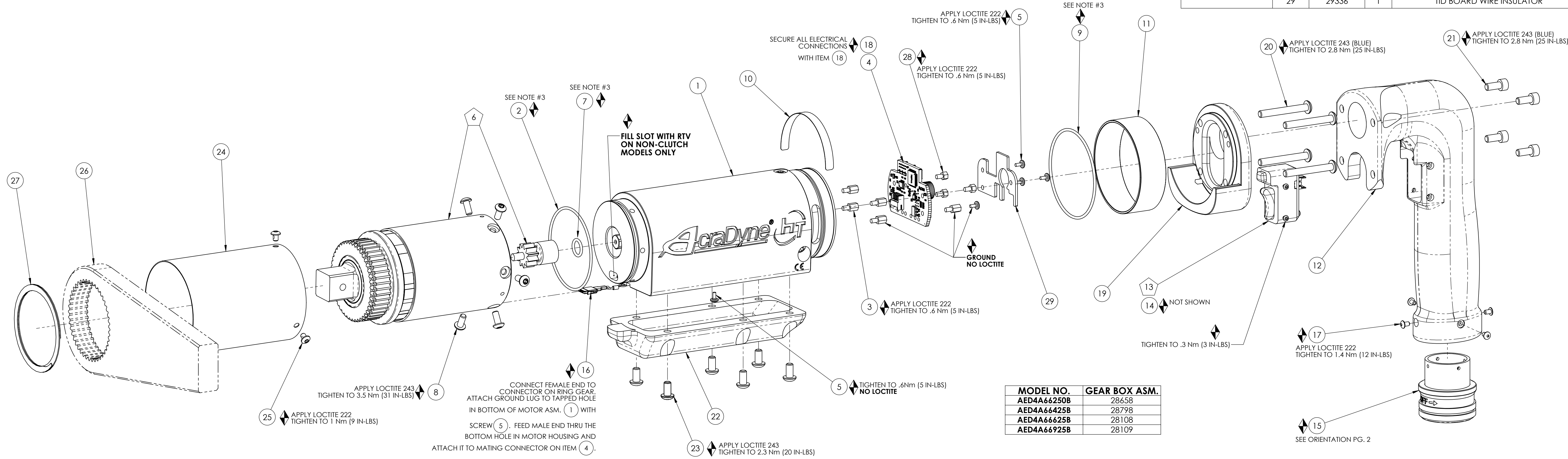


COMMENTS	ITEM NO.	PART NUMBER	QTY.	DESCRIPTION
	1	26481	1	MOTOR ASM.
	2	26488	1	O-RING, MOTOR HOUSING
	3	25574	5	STANDOFF M-F, 4-40x1/4, 3/16 HEX, SS
	4	27727	1	TID BOARD, POPULATED W/AMP
	5	25573	5	SCREW PHP 4-40 X 3/16 18-8 SS
	6	SEE CHART	1	GEAR BOX ASM.
	7	26299	1	O-RING, PINION
	8	29285	6	SCREW, BHSC, TORX, 8-32 x .38, STEEL
	9	26487	1	O-RING, LED COVER
	10	20534	1	SERIAL/MODEL LABEL
	11	26483	1	LED COVER
	12	26276	1	"D" / "J" HANDLE
	13	25212	1	SWITCH SUB-ASSEMBLY
NOT SHOWN	14	26526	1	CABLE, TRIGGER, GEN 4
	15	26288	1	TOOL CONNECTOR ASM., PISTOL
	16	28211	1	(4) LINE MALE/FEMALE JUMPER ASM.
	17	25745	4	SCREW, BHSC 4-40 STEEL, BLACK OXIDE
NOT SHOWN	18	27464	A/R	TWISTED WAXED LINEN TWINE
	19	26463	1	END CAP, "D" HANDLE
	20	26228	4	SCREW, BHSC 10-32X1.50, STEEL, BLACK OXIDE
	21	26458	4	SCREW, SHC 10-32 X .44 LG., STEEL, BLACK OXIDE
	22	26297	1	TRAY, WIRE, "D" & LEVER HANDLE
	23	26206	6	SCREW, BHSC 10-32 X .375, STEEL
	24	26495	1	GEAR CASE COVER
	25	26319	3	SCREW, BHSC 6-32 X .188, 18-8 SS
	26	26896	1	CHOOSE REACTION BAR
	27	26514	1	RETAINING RING, SPIRAL, Ø2.441 X Ø2.105 X .078
	28	29337	3	STANDOFF, M-F, 4-40 X 1/8, SS
	29	29336	1	TID BOARD WIRE INSULATOR



HANDLE AND COMPONENTS REMOVED FOR CLARITY



DOCUMENT CONTROL
PRINTED COPIES OF THIS DOCUMENT ARE CONSIDERED TO BE UNCONTROLLED DOCUMENTS. HOLDERS ARE RESPONSIBLE FOR VERIFYING THE CURRENT REVISION LEVEL WITH PURCHASING OR ENGINEERING PRIOR TO USE OR FABRICATION. THE CONTROLLED VERSION OF THIS DOCUMENT IS ELECTRONICALLY MAINTAINED.

PROPRIETARY AND CONFIDENTIAL
THIS DRAWING CONTAINS INFORMATION STRICTLY CONFIDENTIAL TO ACRADYNE/AIMCO. IN THE ABSENCE OF EXPRESSED WRITTEN PERMISSION, ACRADYNE/AIMCO HAS LOANED THIS COPY WITH THE MUTUAL UNDERSTANDING THAT (A) IT WILL NOT BE USED FOR ANY PURPOSE OTHER THAN FOR THAT IN WHICH IT WAS PROVIDED, (B) THE DATA CONTAINED HEREIN WILL NOT BE DISCLOSED TO OTHERS, (C) IT WILL NOT BE REPRODUCED, AND (D) IT WILL BE RETURNED TO ACRADYNE/AIMCO IMMEDIATELY UPON DEMAND.

REVISION LEVEL	REVISION RELEASE DATE	DESCRIPTION OF CHANGES MADE TO PART	ECN #	AUTHOR/ APPROVAL
REVISION BLOCK				

UNLESS OTHERWISE SPECIFIED, DIMENSIONS ARE IN INCHES
DIMENSIONS AND TOLERANCING PER ANSI Y14.5 SURFACE ROUGHNESS PER ANSI Y14.36

BLOCK TOLERANCING PER DECIMAL:
X = ±.030 XX = ±.010 XXX = ±.005 XXXX = ±.0005 ANGLE = ±0°30'

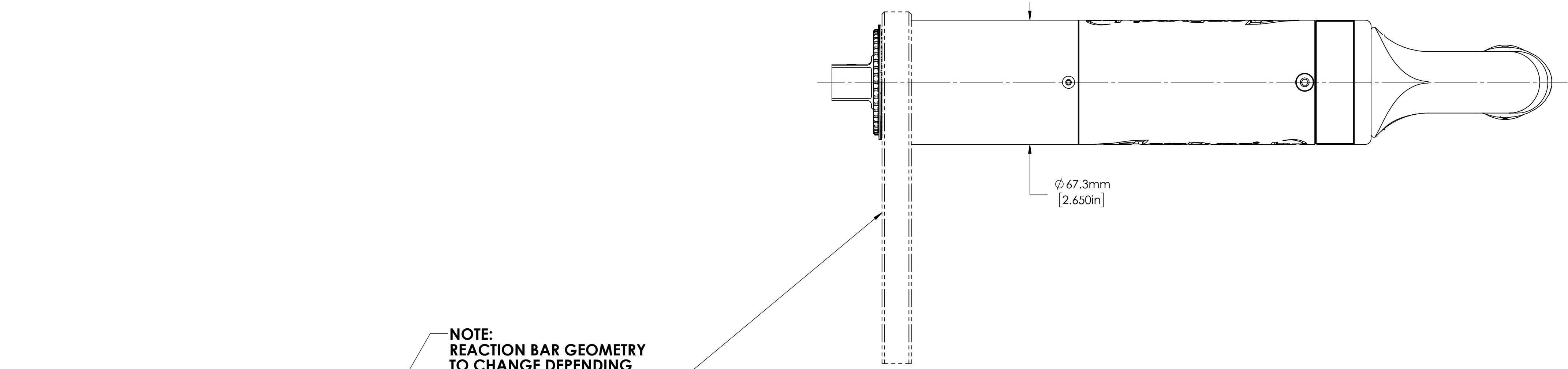
REMOVE BURRS AND SHARP EDGES: R.015 MAX MACHINE SURFACE FINISH: 125 RMS OR BETTER

DRAWINGS AND TECHNICAL DOCUMENTS CONTROLLED BY:
ACRADYNE MECHANICAL ENGINEERING

"D" HANDLE NUTRUNNER 6000 SERIES

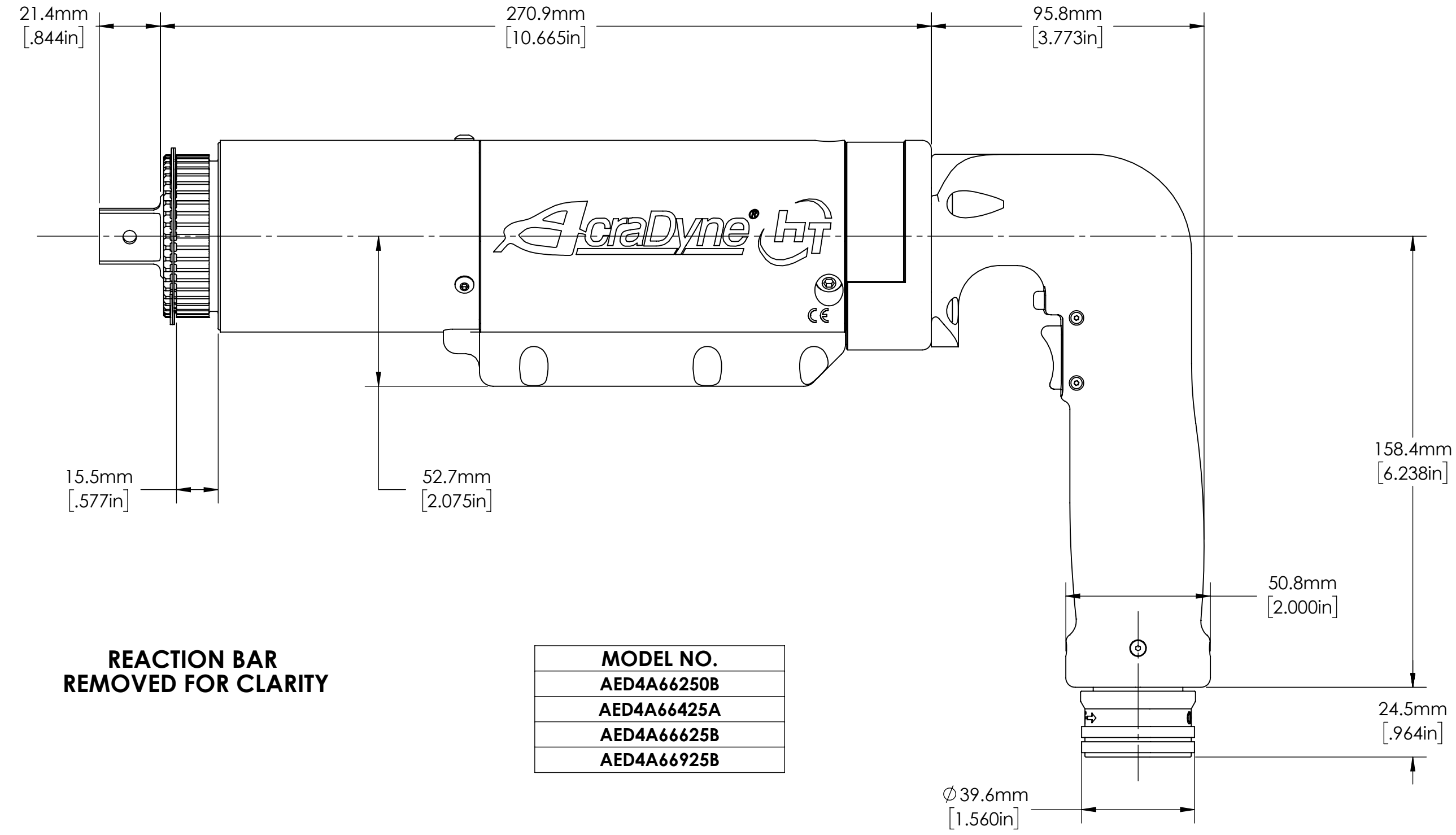
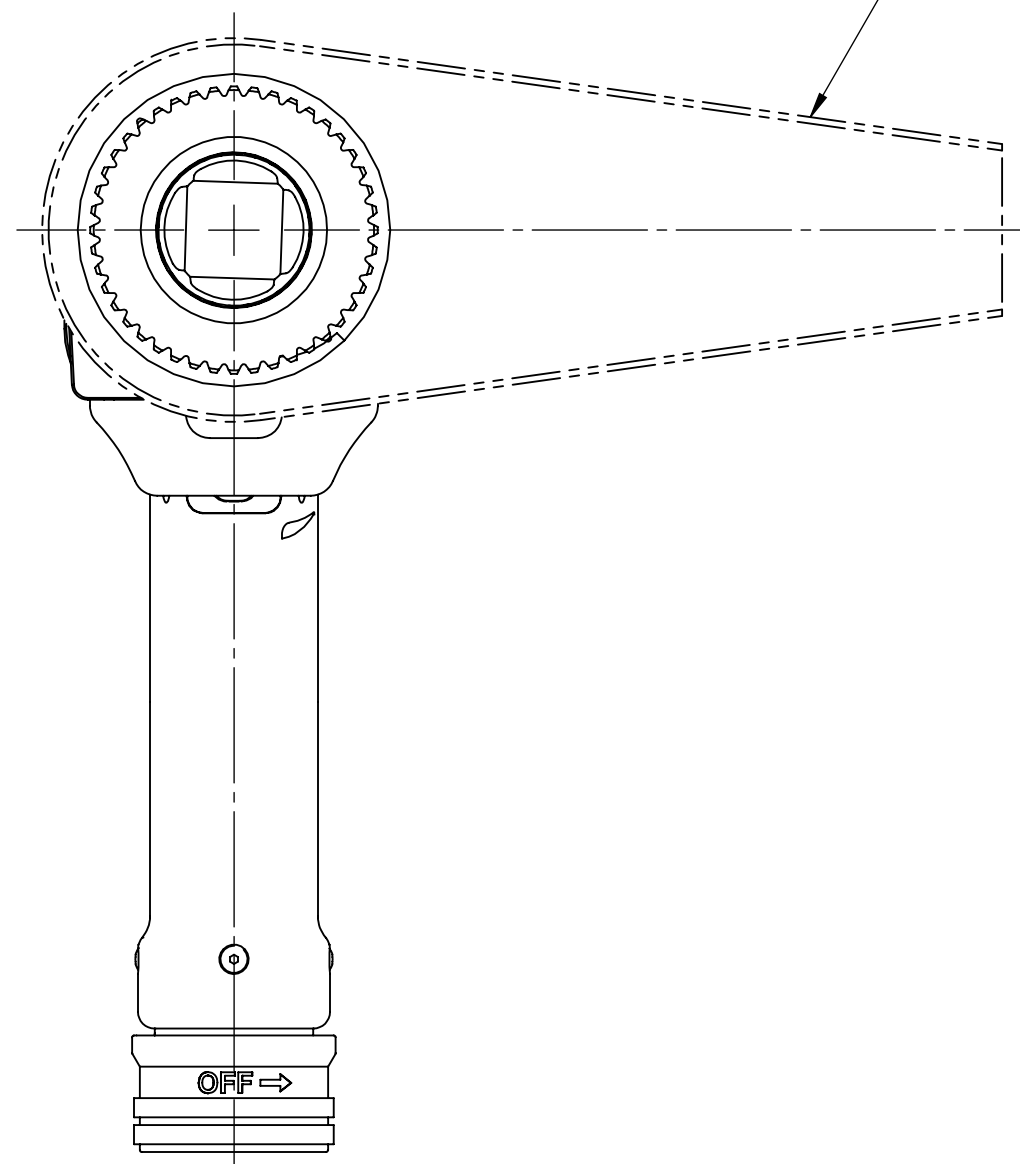
SIZE	PART / DRAWING NUMBER	REVISION
D	AED4A66_B	A

SCALE 3:4 DO NOT SCALE DRAWING SHEET 1 OF 2



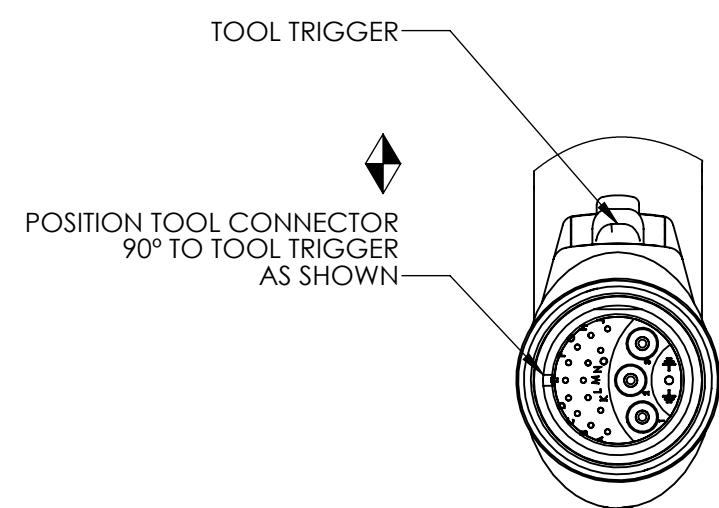
Ø 67.3mm
[2.650in]

NOTE:
REACTION BAR GEOMETRY
TO CHANGE DEPENDING
ON REACTION BAR CHOSEN.



REACTION BAR
REMOVED FOR CLARITY

MODEL NO.
AED4A66250B
AED4A66425A
AED4A66625B
AED4A66925B



TOOL TRIGGER
POSITION TOOL CONNECTOR
90° TO TOOL TRIGGER
AS SHOWN



DOCUMENT CONTROL
PRINTED COPIES OF THIS DOCUMENT ARE CONSIDERED TO BE UNCONTROLLED DOCUMENTS. HOLDERS ARE RESPONSIBLE FOR VERIFYING THE CURRENT REVISION LEVEL WITH PURCHASING OR ENGINEERING PRIOR TO USE OR FABRICATION. THE CONTROLLED VERSION OF THIS DOCUMENT IS ELECTRONICALLY MAINTAINED.

PROPRIETARY AND CONFIDENTIAL
THIS DRAWING CONTAINS INFORMATION STRICTLY CONFIDENTIAL TO ACRADYNE/AIMCO. IN THE ABSENCE OF EXPRESSED WRITTEN PERMISSION, ACRADYNE/AIMCO HAS LOANED THIS COPY WITH THE MUTUAL UNDERSTANDING THAT (A) IT WILL NOT BE USED FOR ANY PURPOSE OTHER THAN FOR THAT IN WHICH IT WAS PROVIDED, (B) THE DATA CONTAINED HEREIN WILL NOT BE DISCLOSED TO OTHERS, (C) IT WILL NOT BE REPRODUCED, AND (D) IT WILL BE RETURNED TO ACRADYNE/AIMCO IMMEDIATELY UPON DEMAND.

REVISION LEVEL	REVISION RELEASE DATE	DESCRIPTION OF CHANGES MADE TO PART	ECN #	AUTHOR/ APPROVAL
REVISION BLOCK				

UNLESS OTHERWISE SPECIFIED,
DIMENSIONS ARE IN INCHES
DIMENSIONS AND TOLERANCING PER ANSI Y14.5
SURFACE ROUGHNESS PER ANSI Y14.36

BLOCK TOLERANCING PER DECIMAL:
X = ±.030 XX = ±.010 XXX = ±.005 XXXX = ±.0005
ANGLE = ±0° 30'

REMOVE BURRS AND SHARP EDGES: R.015 MAX
MACHINE SURFACE FINISH: 125 RMS OR BETTER

DRAWINGS AND TECHNICAL DOCUMENTS CONTROLLED BY:
ACRADYNE MECHANICAL ENGINEERING

"D" HANDLE NUTRUNNER
6000 SERIES

SIZE	PART / DRAWING NUMBER	REVISION
D	AED4A66__B	A
SCALE 2:3	DO NOT SCALE DRAWING	SHEET 2 OF 2