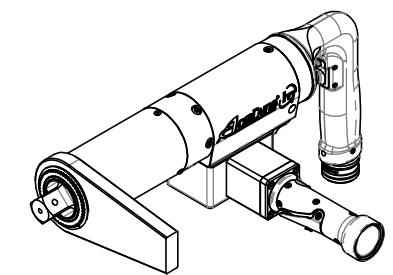
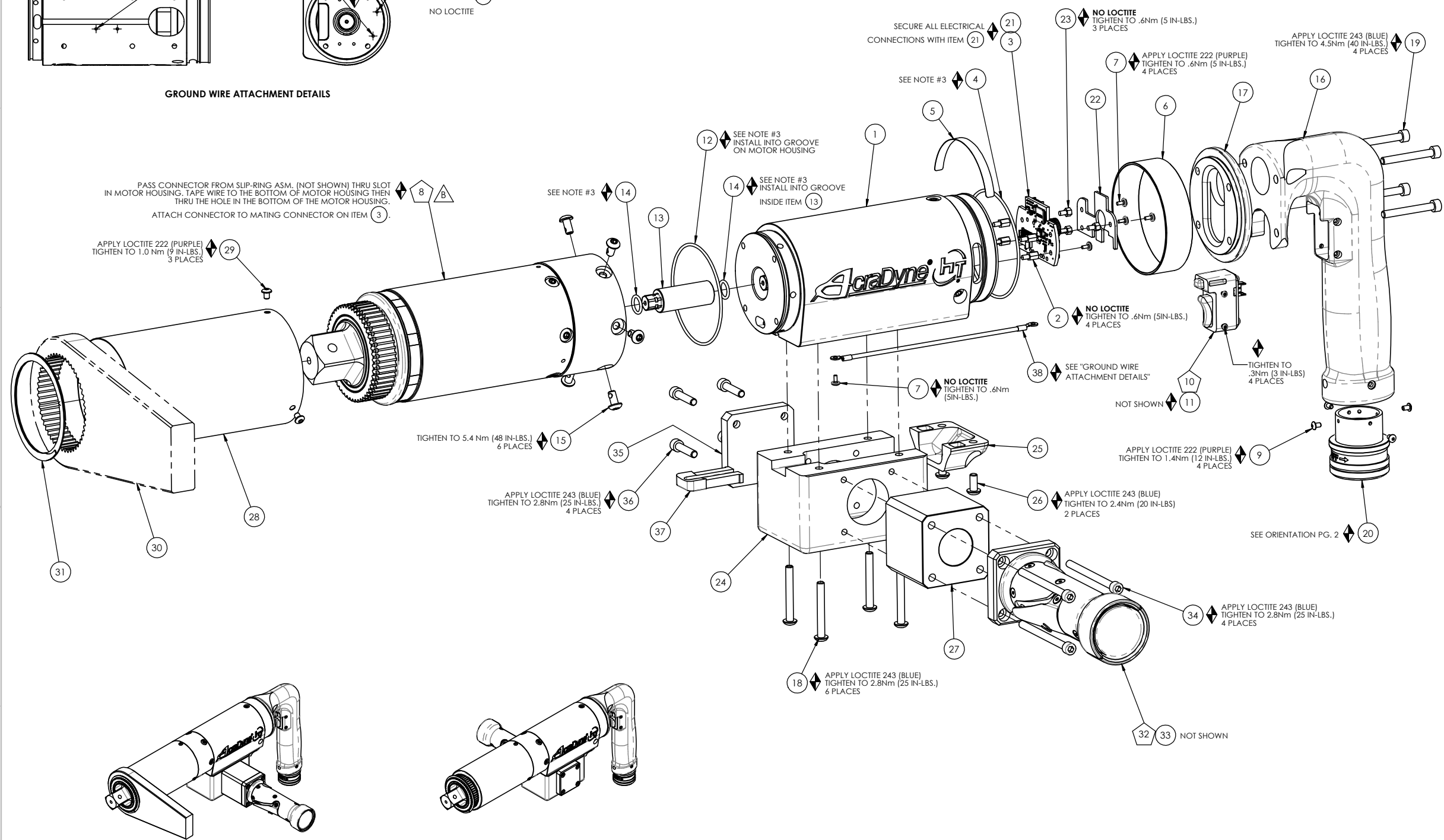
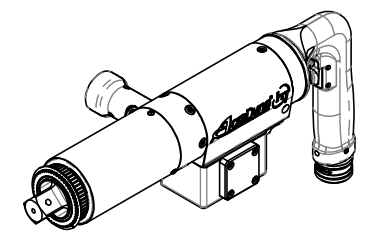


GROUND WIRE ATTACHMENT DETAILS

PASS CONNECTOR FROM SLIP-RING ASM. (NOT SHOWN) THRU SLOT IN MOTOR HOUSING. TAPE WIRE TO THE BOTTOM OF MOTOR HOUSING THEN THRU THE HOLE IN THE BOTTOM OF THE MOTOR HOUSING. ATTACH CONNECTOR TO MATING CONNECTOR ON ITEM 3.



AED4877_00BDLL MODELS



AED4877_00BDLR MODELS

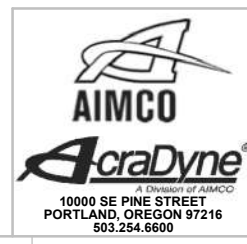
COMMENTS	ITEM NO.	PART NUMBER	QTY.	DESCRIPTION
	1	26212	1	MOTOR ASM., 7000 SERIES
	2	25574	4	STANDOFF M-F, 4-40x1/4, 3/16 HEX, SS
	3	27785	1	TID BOARD, POPULATED W/O AMP CIRCUIT
	4	26226	1	O-RING, LED COVER
	5	20534	1	LABEL, SERIAL/MODEL NUMBER
	6	26223	1	LED COVER
	7	25573	7	SCREW PHP 4-40 X 3/16 18-8 SS
	8	SEE CHART	1	GEARBOX/CLUTCH ASM., 7000-SERIES
	9	25745	4	SCREW, BHSC 4-40 STEEL, BLACK OXIDE
	10	25212	1	SWITCH SUB-ASSEMBLY
NOT SHOWN	11	26526	1	TRIGGER CABLE ASM.
	12	26227	1	O-RING, MOTOR HOUSING
	13	27977	1	SLIP RING PINION ADAPTOR, CLUTCH
	14	26299	2	O-RING, PINION
	15	29279	6	SCREW, BHSC, 10-32 X 3/8, TORX HEAD, NYLON PELL-IT, STEEL
	16	26276	1	"D" / "J" HANDLE
	17	26278	1	END CAP, "D" HANDLE
	18	26228	4	SCREW, BHSC 10-32X1.50, STEEL, BLACK OXIDE
	19	26334	4	SCREW, SHC 10-32 X 1.50, STEEL, BLACK OXIDE
	20	26288	1	TOOL CONNECTOR ASM., PISTOL
NOT SHOWN	21	27464	A/R	TWISTED WAXED LINEN TWINE
	22	29336	1	TID BOARD WIRE INSULATOR
	23	29337	3	STANDOFF, M-F, 4-40 X 1/8, SS
	24	28060	1	HANDLE BLOCK, HT DUAL LEVER
	25	26224	1	TRAY, WIRE, PISTOL, INJECTION MOLDED
	26	28664	2	SCREW, BHSC, 10-32 X .437, STEEL
	27	28059	1	HANDLE SPACER, HT DUAL LEVER
	28	SEE CHART	1	GEAR CASE COVER
	29	26319	3	SCREW, BHSC 6-32 X .188, 18-8 SS
	30	26897	1	CHOOSE REACTION BAR
	31	26243	1	RETAINING RING, SPIRAL, Ø2.864 X Ø2.464 X .078
	32	28070	1	HANDLE ASM., DUAL LEVER, MFB DISABLED
NOT SHOWN	33	28107	1	HT TOOL TRIGGER CABLE, 6-PIN TO 3-PIN, 10"
	34	28002	4	SCREW, SHC, 10-32 X 2.5, STEEL
	35	28061	1	COVER, HT DUAL LEVER
	36	26789	4	SCREW, SHC, 10-32 x 7/8, STEEL, BLACK OXIDE
	37	24838	1	TRANSDUCER CABLE CHASE
	38	31410	1	GROUND WIRE ASSEMBLY, 18 AWG, 6000 & 7000 HT SERIES

NOTE: SEE WORK INSTRUCTION DOCUMENT "W2047" FOR COMPLETE SLIP-RING ASSEMBLY INSTRUCTIONS.

MODEL NO.	GEARBOX/CLUTCH ASM.	GEAR CASE COVER
AED48771000BDLL	31777	26298
AED48771000BDLR	31777	26298
AED48771800BDLL	31795	26295
AED48771800BDLR	31795	26295
AED48772500BDLL	31797	26295
AED48772500BDLR	31797	26295

- ◆ ASSEMBLY INSTRUCTIONS
- ⬠ SUB-ASSEMBLY

- GEARS & SPLINES: LUBRICATE WITH DOW CORNING MOLYKOTE BR2 PLUS GREASE.
- BEARINGS: LUBRICATE WITH CHEVRON SR1 GREASE
- O-RINGS: LUBRICATE WITH O-RING LUBE



DOCUMENT CONTROL
 PRINTED COPIES OF THIS DOCUMENT ARE CONSIDERED TO BE UNCONTROLLED DOCUMENTS. HOLDERS ARE RESPONSIBLE FOR VERIFYING THE CURRENT REVISION LEVEL WITH PURCHASING OR ENGINEERING PRIOR TO USE OR FABRICATION. THE CONTROLLED VERSION OF THIS DOCUMENT IS ELECTRONICALLY MAINTAINED.

PROPRIETARY AND CONFIDENTIAL
 THIS DRAWING CONTAINS INFORMATION STRICTLY CONFIDENTIAL TO ACRADYNE/AIMCO. IN THE ABSENCE OF EXPRESSED WRITTEN PERMISSION, ACRADYNE/AIMCO HAS LOANED THIS COPY WITH THE MUTUAL UNDERSTANDING THAT (A) IT WILL NOT BE USED FOR ANY PURPOSE OTHER THAN FOR THAT IN WHICH IT WAS PROVIDED, (B) THE DATA CONTAINED HEREIN WILL NOT BE DISCLOSED TO OTHERS, (C) IT WILL NOT BE REPRODUCED, AND (D) IT WILL BE RETURNED TO ACRADYNE/AIMCO IMMEDIATELY UPON DEMAND.

UNLESS OTHERWISE SPECIFIED, DIMENSIONS ARE IN INCHES
 DIMENSIONS AND TOLERANCING PER ANSI Y14.5 SURFACE ROUGHNESS PER ANSI Y14.36

BLOCK TOLERANCING PER DECIMAL:
 X = ±.030 XX = ±.010 XXX = ±.005 .XXXX = ±.0005 ANGLE = ±0° 30'

REMOVE BURRS AND SHARP EDGES: R.015 MAX MACHINE SURFACE FINISH: 125 RMS OR BETTER

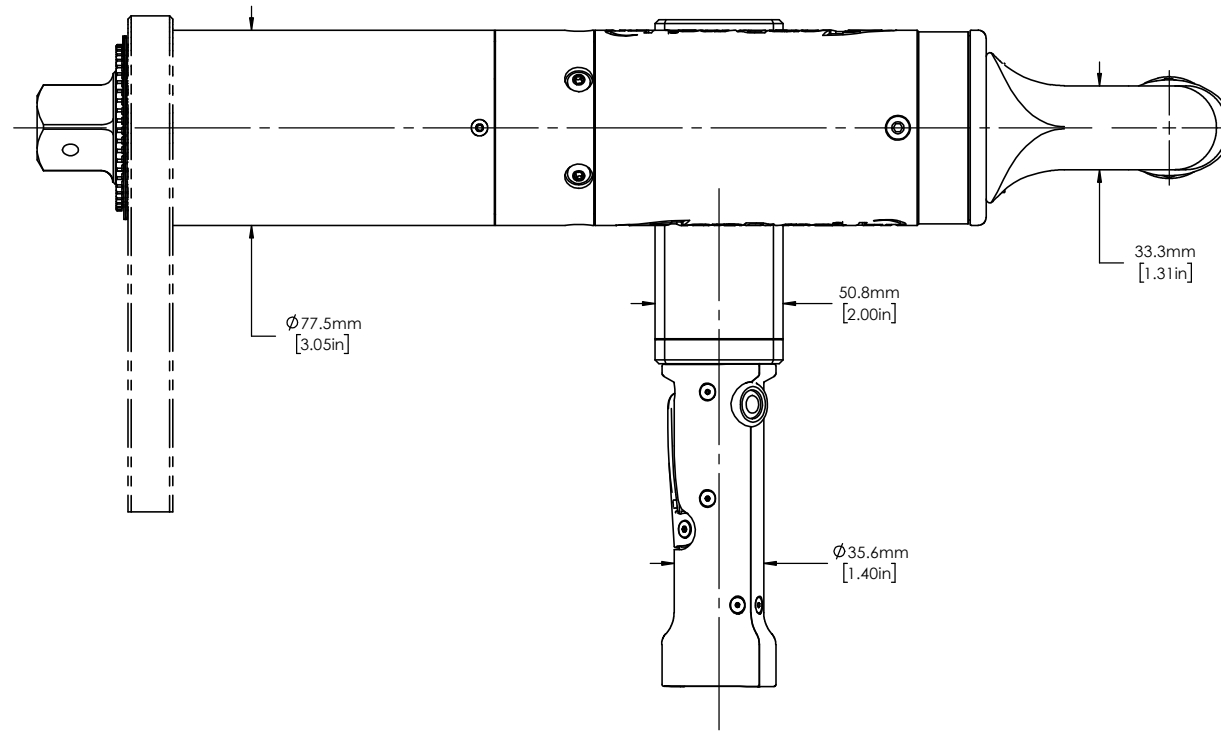
DRAWINGS AND TECHNICAL DOCUMENTS CONTROLLED BY:
ACRADYNE MECHANICAL ENGINEERING

"D" HANDLE NUTRUNNER W/SLIP RING CLUTCH, DUAL LEVER 7000 SERIES

SIZE	PART / DRAWING NUMBER	REVISION
D	AED4877_00BDL	B

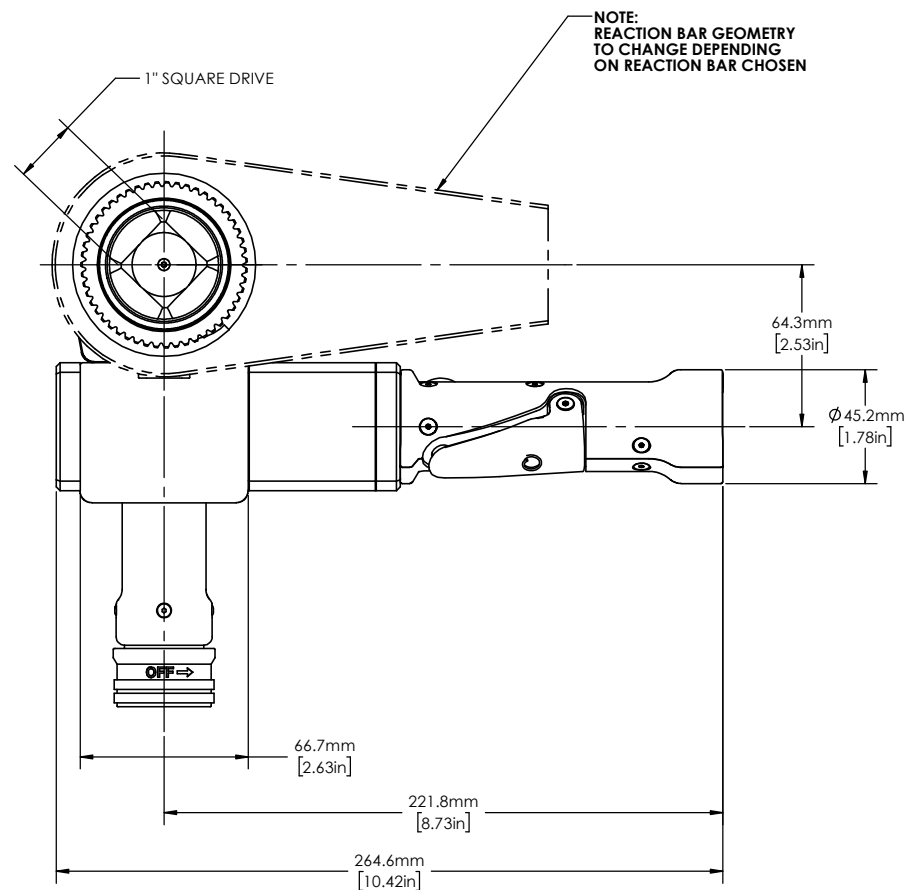
SCALE: 1:2 DO NOT SCALE DRAWING SHEET 1 OF 2

REVISION BLOCK

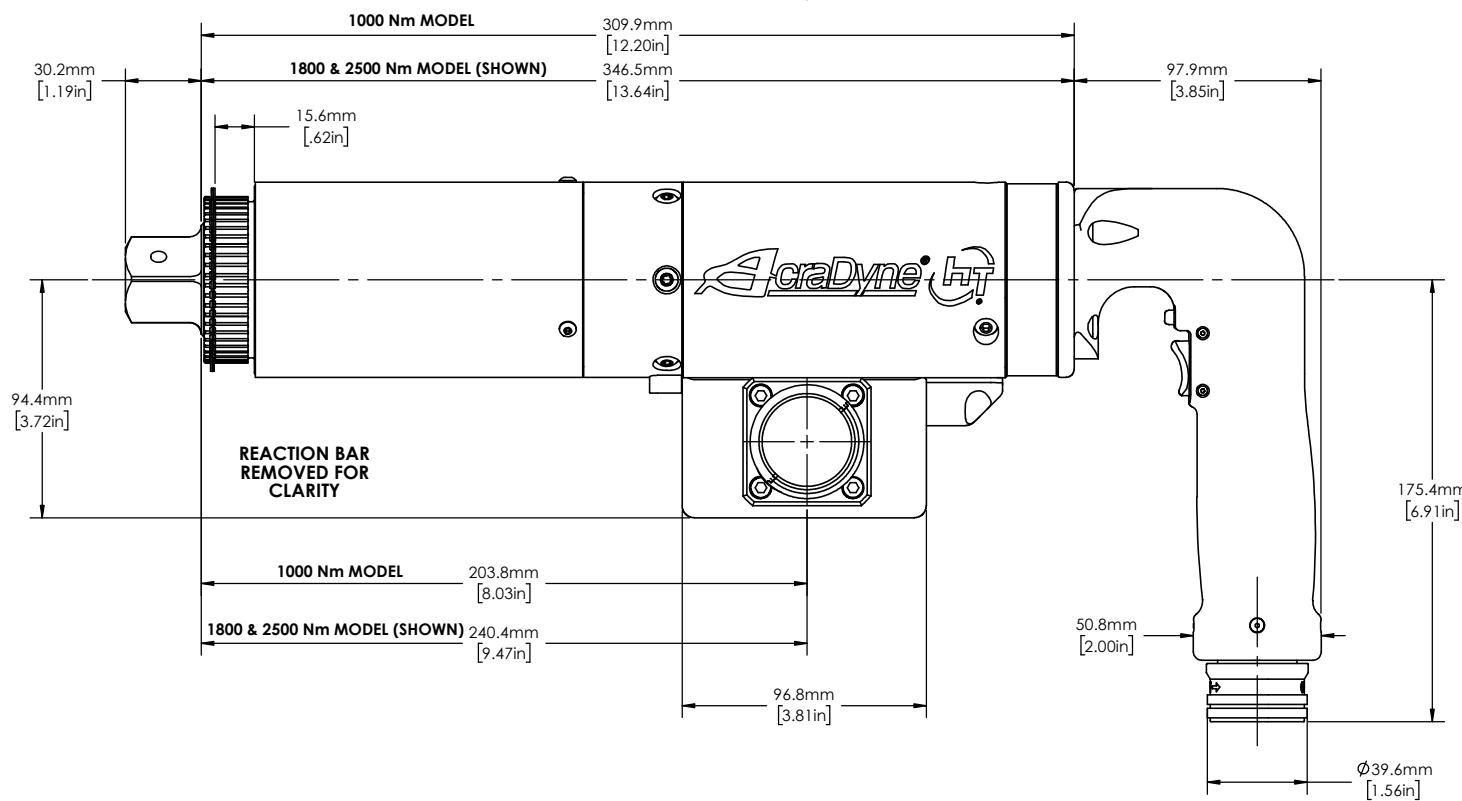


MODEL NO.	
B	AED4B771000BDLL
B	AED4B771000BDLR
B	AED4B771800BDLL
B	AED4B771800BDLR
B	AED4B772500BDLL
B	AED4B772500BDLR

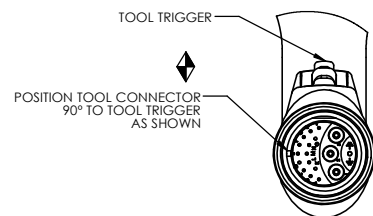
NOTE:
RIGHT HAND MODELS NOT SHOWN
IN TOOL OUTLINE



NOTE:
REACTION BAR GEOMETRY
TO CHANGE DEPENDING
ON REACTION BAR CHOSEN



REACTION BAR
REMOVED FOR
CLARITY



DOCUMENT CONTROL
PRINTED COPIES OF THIS DOCUMENT ARE CONSIDERED TO BE UNCONTROLLED DOCUMENTS. HOLDERS ARE RESPONSIBLE FOR VERIFYING THE CURRENT REVISION LEVEL WITH PURCHASING OR ENGINEERING PRIOR TO USE OR FABRICATION. THE CONTROLLED VERSION OF THIS DOCUMENT IS ELECTRONICALLY MAINTAINED.

PROPRIETARY AND CONFIDENTIAL
THIS DRAWING CONTAINS INFORMATION STRICTLY CONFIDENTIAL TO ACRADYNE/AIMCO. IN THE ABSENCE OF EXPRESSED WRITTEN PERMISSION, ACRADYNE/AIMCO HAS LOANED THIS COPY WITH THE MUTUAL UNDERSTANDING THAT (A) IT WILL NOT BE USED FOR ANY PURPOSE OTHER THAN FOR THAT IN WHICH IT WAS PROVIDED, (B) THE DATA CONTAINED HEREIN WILL NOT BE DISCLOSED TO OTHERS, (C) IT WILL NOT BE REPRODUCED, AND (D) IT WILL BE RETURNED TO ACRADYNE/AIMCO IMMEDIATELY UPON DEMAND.

NO.	DATE	DESCRIPTION

REVISION BLOCK

UNLESS OTHERWISE SPECIFIED,
DIMENSIONS ARE IN INCHES
DIMENSIONS AND TOLERANCING PER ANSI Y14.5
SURFACE ROUGHNESS PER ANSI Y14.36

BLOCK TOLERANCING PER DECIMAL:
.X = ±.030 .XX = ±.010 .XXX = ±.005 .XXXX = ±.0005
ANGLE = ±0° 30'

REMOVE BURRS AND SHARP EDGES: R.015 MAX
MACHINE SURFACE FINISH: 125 RMS OR BETTER

DRAWINGS AND TECHNICAL DOCUMENTS CONTROLLED BY:
ACRADYNE MECHANICAL ENGINEERING

**"D" HANDLE NUTRUNNER
W/SLIP RING CLUTCH,
DUAL LEVER
7000 SERIES**

SIZE	PART / DRAWING NUMBER	REVISION
D	AED4B77_00BDL	B
SCALE: 2:3	DO NOT SCALE DRAWING	SHEET 2 OF 2