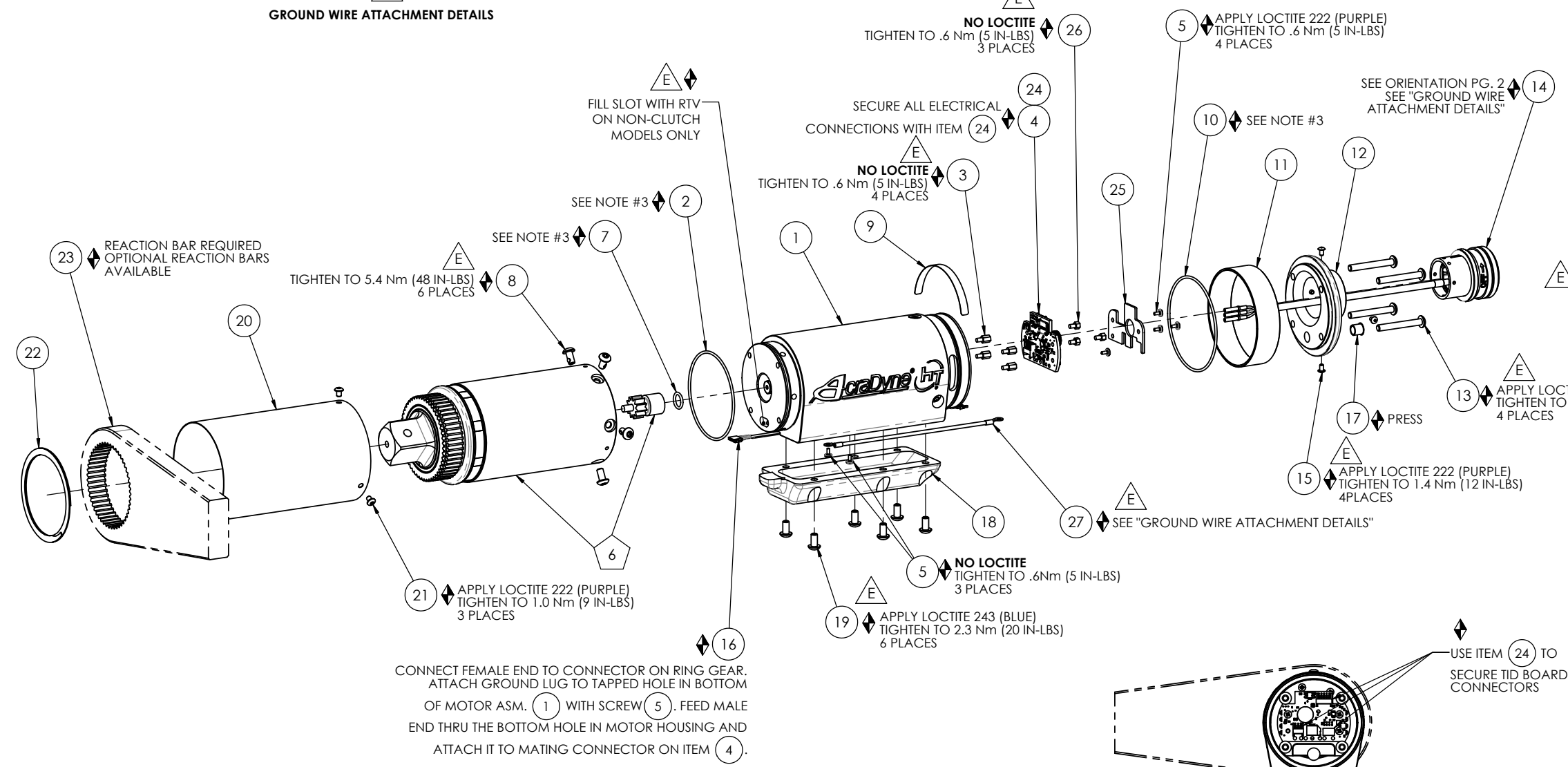
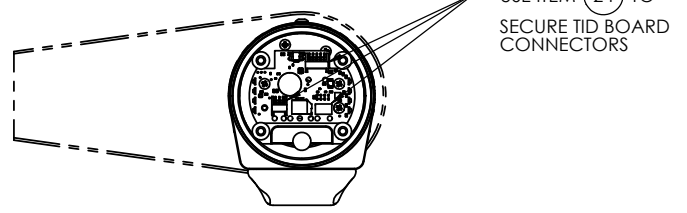


**GROUND WIRE ATTACHMENT DETAILS**

ITEM 14 GROUND WIRE ATTACHMENT POINT USING ITEM 5. NO LOCTITE



CONNECT FEMALE END TO CONNECTOR ON RING GEAR. ATTACH GROUND LUG TO TAPPED HOLE IN BOTTOM OF MOTOR ASM. 1 WITH SCREW 5. FEED MALE END THRU THE BOTTOM HOLE IN MOTOR HOUSING AND ATTACH IT TO MATING CONNECTOR ON ITEM 4.



**END CAP AND TOOL CONNECTOR REMOVED FOR CLARITY**

COMMENTS	ITEM NO.	PART NUMBER	QTY.	DESCRIPTION
	1	26212	1	MOTOR ASM., 7000 SERIES
	2	26227	1	O-RING, MOTOR HOUSING
	3	25574	4	STANDOFF M-F, 4-40x1/4, 3/16 HEX, SS
	4	27727	1	TID BOARD, POPULATED W/AMP
	5	25573	8	SCREW PHP 4-40 X 3/16 18-8 SS
	6	SEE CHART	1	GEAR BOX ASM.
	7	26299	1	O-RING, PINION
	8	29279	6	SCREW, BHSC, 10-32 x 3/8, TORX HEAD, NYLON PELL-IT, STEEL
	9	20534	1	3000 SERIAL/MODEL LABEL
	10	26226	1	O-RING, LED COVER
	11	26223	1	LED COVER
	12	26277	1	END CAP, "J" HANDLE
	13	26228	4	SCREW, BHSC 10-32X1.50, STEEL, BLACK OXIDE
	14	26280	1	TOOL CONNECTOR ASM., "J" HANDLE
	15	25745	4	SCREW, BHSC 4-40 STEEL, BLACK OXIDE
	16	28211	1	(4) LINE MALE/FEMALE JUMPER ASM.
	17	26525	1	PLUG 5/16"
	18	26297	1	TRAY, WIRE, "D" & LEVER HANDLE
	19	26206	6	SCREW, BHSC 10-32 X .375, STEEL
	20	SEE CHART	1	GEAR CASE COVER
	21	26319	3	SCREW, BHSC 6-32 X .188, 18-8 SS
	22	26243	1	RETAINING RING, SPIRAL, Ø2.864 X Ø2.464 X .078
	23	26897	1	CHOOSE REACTION BAR
NOT SHOWN	24	27464	A/R	TWISTED WAXED LINEN TWINE
	25	29336	1	TID BOARD WIRE INSULATOR
	26	29337	3	STANDOFF, M-F, 4-40 X 1/8, SS
	27	31410	1	GROUND WIRE ASSEMBLY, 18 AWG, 6000 & 7000 HT SERIES

TOOL MODEL	GEAR BOX ASM.	GEAR CASE COVER
AEF4A771000B	28110	26298
AEF4A772500B	28111	26295

- ◆ ASSEMBLY INSTRUCTIONS
- ◻ SUB-ASSEMBLY

- GEARS & SPLINES: LUBRICATE WITH DOW CORNING MOLYKOTE BR2 PLUS GREASE.
- BEARINGS: LUBRICATE WITH CHEVRON SR1 GREASE
- O-RINGS: LUBRICATE WITH O-RING LUBE



**DOCUMENT CONTROL**  
 PRINTED COPIES OF THIS DOCUMENT ARE CONSIDERED TO BE UNCONTROLLED DOCUMENTS. HOLDERS ARE RESPONSIBLE FOR VERIFYING THE CURRENT REVISION LEVEL WITH PURCHASING OR ENGINEERING PRIOR TO USE OR FABRICATION. THE CONTROLLED VERSION OF THIS DOCUMENT IS ELECTRONICALLY MAINTAINED.

**PROPRIETARY AND CONFIDENTIAL**  
 THIS DRAWING CONTAINS INFORMATION STRICTLY CONFIDENTIAL TO ACRADYNE/AIMCO. IN THE ABSENCE OF EXPRESSED WRITTEN PERMISSION, ACRADYNE/AIMCO HAS LOANED THIS COPY WITH THE MUTUAL UNDERSTANDING THAT (A) IT WILL NOT BE USED FOR ANY PURPOSE OTHER THAN FOR THAT IN WHICH IT WAS PROVIDED, (B) THE DATA CONTAINED HEREIN WILL NOT BE DISCLOSED TO OTHERS, (C) IT WILL NOT BE REPRODUCED, AND (D) IT WILL BE RETURNED TO ACRADYNE/AIMCO IMMEDIATELY UPON DEMAND.

**UNLESS OTHERWISE SPECIFIED, DIMENSIONS ARE IN INCHES**  
 DIMENSIONS AND TOLERANCING PER ANSI Y14.5 SURFACE ROUGHNESS PER ANSI Y14.36

**BLOCK TOLERANCING PER DECIMAL:**  
 X = ±.030 XX = ±.010 XXX = ±.005 XXXX = ±.0005 ANGLE = ±0°30'

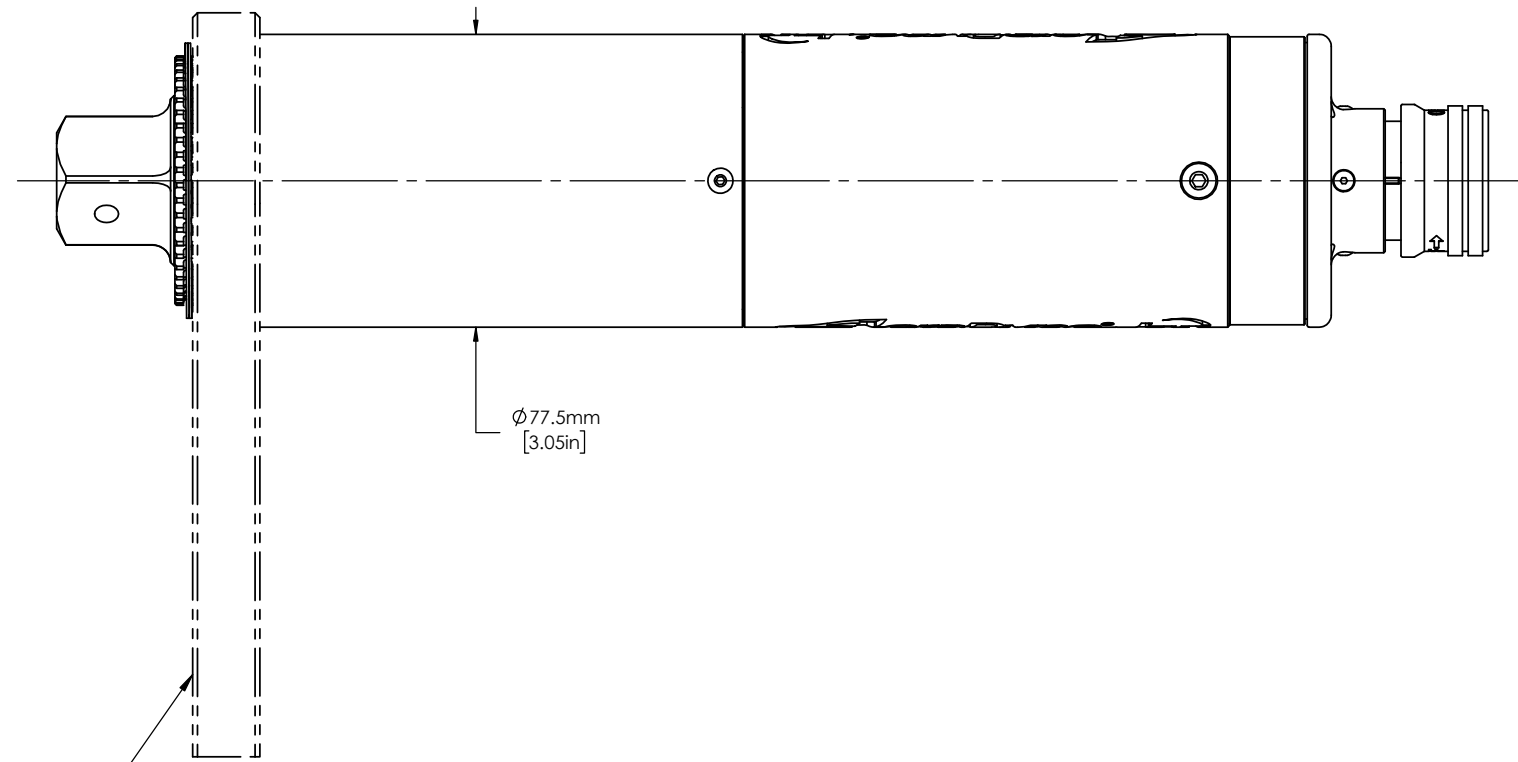
REMOVE BURRS AND SHARP EDGES: R.015 MAX MACHINE SURFACE FINISH: 125 RMS OR BETTER

DRAWINGS AND TECHNICAL DOCUMENTS CONTROLLED BY:  
**ACRADYNE MECHANICAL ENGINEERING**

**FIXTURED NUTRUNNER 7000 SERIES**

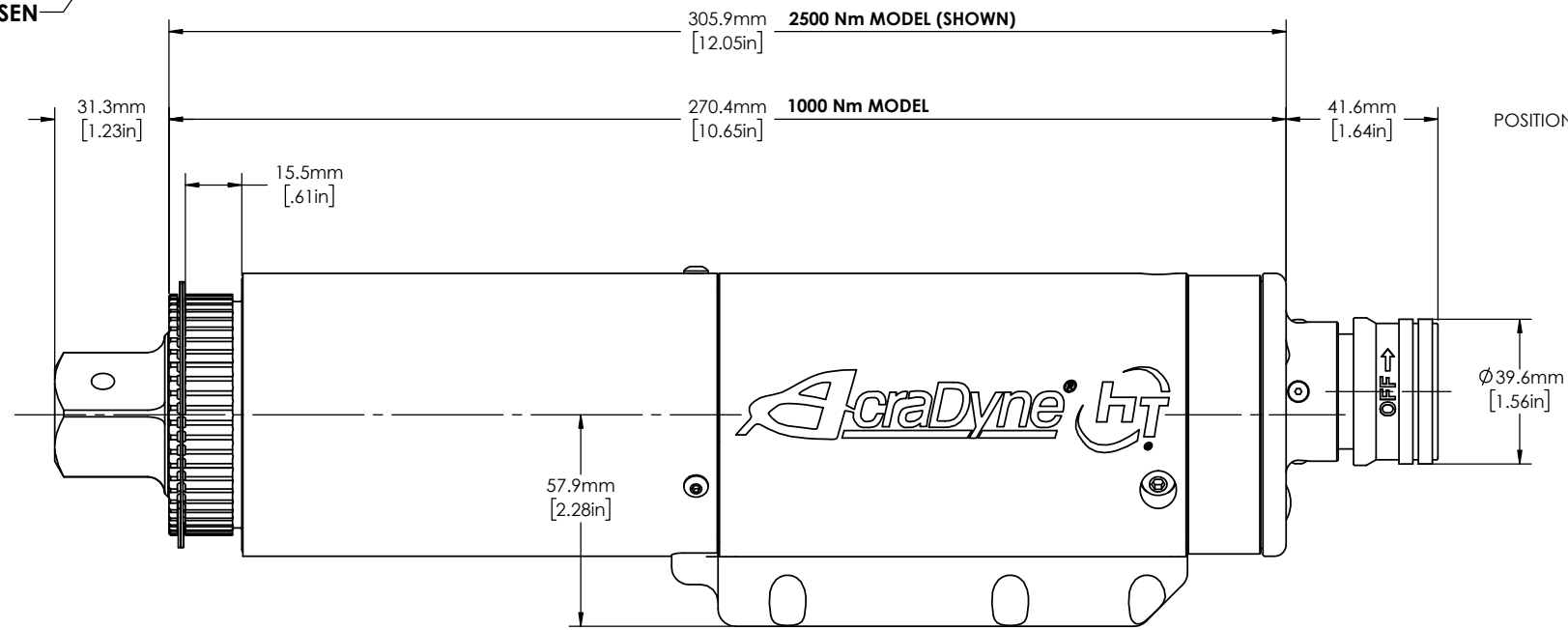
SIZE	PART / DRAWING NUMBER	REVISION
D	AEF4A77_00B	E

SCALE 1:2 DO NOT SCALE DRAWING SHEET 1 OF 2



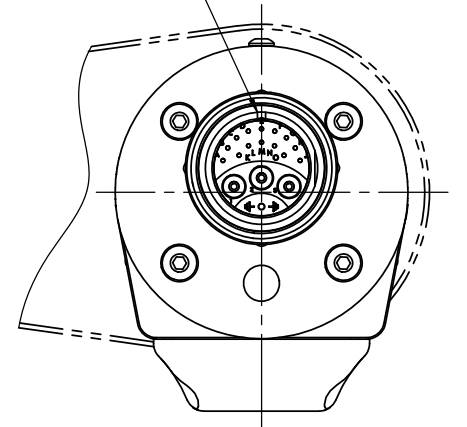
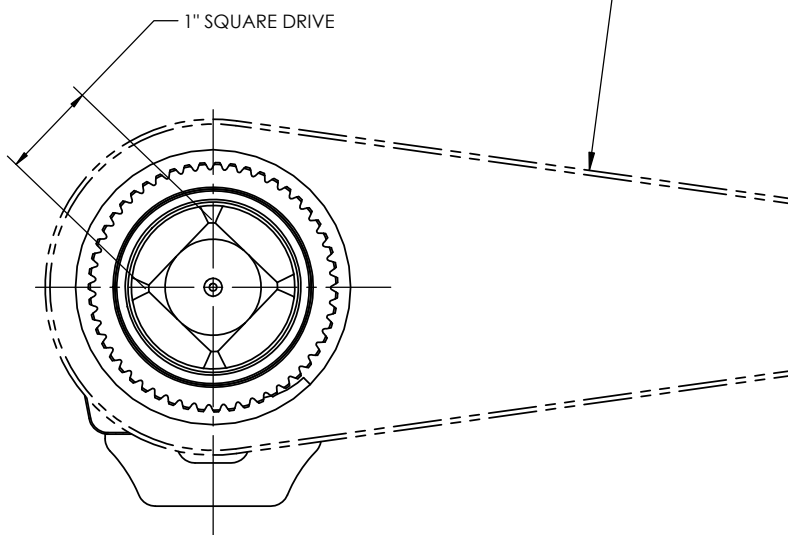
<b>MODEL NO.</b>
<b>AEF4A771000B</b>
<b>AEF4A772500B</b>

**NOTE:**  
REACTION BAR GEOMETRY  
TO CHANGE DEPENDING  
ON REACTION BAR CHOSEN



**REACTION BAR REMOVED FOR CLARITY**

POSITION TOOL CONNECTOR  
AS SHOWN



**DOCUMENT CONTROL**  
PRINTED COPIES OF THIS DOCUMENT ARE CONSIDERED TO BE UNCONTROLLED DOCUMENTS. HOLDERS ARE RESPONSIBLE FOR VERIFYING THE CURRENT REVISION LEVEL WITH PURCHASING OR ENGINEERING PRIOR TO USE OR FABRICATION. THE CONTROLLED VERSION OF THIS DOCUMENT IS ELECTRONICALLY MAINTAINED.

**PROPRIETARY AND CONFIDENTIAL**  
THIS DRAWING CONTAINS INFORMATION STRICTLY CONFIDENTIAL TO ACRADYNE/AIMCO. IN THE ABSENCE OF EXPRESSED WRITTEN PERMISSION, ACRADYNE/AIMCO HAS LOANED THIS COPY WITH THE MUTUAL UNDERSTANDING THAT (A) IT WILL NOT BE USED FOR ANY PURPOSE OTHER THAN FOR THAT IN WHICH IT WAS PROVIDED, (B) THE DATA CONTAINED HEREIN WILL NOT BE DISCLOSED TO OTHERS, (C) IT WILL NOT BE REPRODUCED, AND (D) IT WILL BE RETURNED TO ACRADYNE/AIMCO IMMEDIATELY UPON DEMAND.

**UNLESS OTHERWISE SPECIFIED, DIMENSIONS ARE IN INCHES**  
DIMENSIONS AND TOLERANCING PER ANSI Y14.5  
SURFACE ROUGHNESS PER ANSI Y14.36

**BLOCK TOLERANCING PER DECIMAL:**  
X = ±0.030 XX = ±0.010 XXX = ±0.005 XXXX = ±0.0005  
ANGLE = ±0°30'

REMOVE BURRS AND SHARP EDGES: R.015 MAX  
MACHINE SURFACE FINISH: 125 RMS OR BETTER

DRAWINGS AND TECHNICAL DOCUMENTS CONTROLLED BY:  
**ACRADYNE MECHANICAL ENGINEERING**

**FIXTURED NUTRUNNER  
7000 SERIES**

SIZE <b>D</b>	PART / DRAWING NUMBER <b>AEF4A77_00B</b>	REVISION <b>E</b>
------------------	---	----------------------